

Product datasheet for **RG211588**

NMDAR1 (GRIN1) (NM_021569) Human Tagged ORF Clone

Product data:

Product Type:	Expression Plasmids
Product Name:	NMDAR1 (GRIN1) (NM_021569) Human Tagged ORF Clone
Tag:	TurboGFP
Symbol:	NMDAR1
Synonyms:	GluN1; MRD8; NDHMSD; NDHMSR; NMD-R1; NMDA1; NMDAR1; NR1
Mammalian Cell Selection:	Neomycin
Vector:	pCMV6-AC-GFP (PS100010)
E. coli Selection:	Ampicillin (100 ug/mL)



[View online »](#)

ORF Nucleotide Sequence:

>RG211588 representing NM_021569
 Red=Cloning site Blue=ORF Green=Tags(s)

TTTTGTAATACGACTCACTATAGGGCGGCCGGGAATTCGTCGACTGGATCCGGTACCGAGGAGATCTGCC
 GCC**CGATCGCC**

ATGAGCACCATGCGCCTGCTGACGCTCGCCTGCTGTTCTCCTGCTCCGTCGCCCCGTGCCGCTGCGACC
 CCAAGATCGTCAACATTGGCGCGGTGCTGAGCACGCGGAAGCACGAGCAGATGTTCCGCGAGGCCGTGAA
 CCAGGCCAACAAGCGGCACGGCTCCTGGAAGATTCAGCTCAATGCCACCTCCGTCACGCACAAGCCCAAC
 GCCATCCAGATGGCTCTGTGGTGTGCGAGGACCTCATCTCCAGCCAGGTCTACGCCATCTAGTTAGCC
 ATCCACCTACCCCAACGACCATTCACTCCCACCCTGTCTCCTACACAGCCGGCTTCTACCGCATACC
 CGTGTGGGGCTGACCACCCGCATGTCCATCTACTCGGACAAGAGCATCCACCTGAGCTTCTGCGCACC
 GTGCCGCCCTACTCCCACAGTCCAGCGTGTGGTTTGGATGATGCGTGTCTACAGCTGGAACCACATCA
 TCCTGCTGGTCAGCGACGACCACGAGGGCCGGGCGCTCAGAAACGCCTGGAGACGCTGCTGGAGGAGCG
 TGAGTCCAAGGCAGAGAAGGTGTGCAGTTTACCAGGGACCAAGAAGCTGACGCCCTGCTGATGGAG
 GCGAAAGAGCTGGAGGCCGGGTATCATCTTTCTGCCAGCGAGGACGATGCTGCCACTGTATACCGCG
 CAGCCCGCATGCTGAACATGACGGGCTCCGGGTACGTGTGGTGGTGGCGAGCGCGAGATCTCGGGGAA
 CGCCCTGCGCTACGCCCCAGACGGCATCTCGGGCTGCAGCTCATCAACGGCAAGAACGAGTCGGCCAC
 ATCAGCGACGCGGTGGCGTGGTGGCCAGGCCGTGCACGAGCTCCTCGAGAAGGAGAACATCACCGACC
 CGCCGCGGGCTGCGTGGGAACACCAACATCTGGAAGACCGGGCGCTTTCAAGAGAGTGTGATGTC
 TTCCAAGTATGCGGATGGGGTACTGGTGCCTGGAGTTCAATGAGGATGGGACCGGAAGTTCCGCAAC
 TACAGCATCATGAACCTGCAGAACCGAAGCTGGTCAAGTGGGCATCTACAATGGCACCCACGTCATCC
 CTAATGACAGGAAGATCATCTGGCCAGGCGGAGAGACAGAGAAGCCTCGAGGGTACCAGATGTCCACCAG
 ACTGAAGATTGTGACGATCCACCAGGAGCCCTTGGTGTACGTCAAGCCCACGCTGAGTGATGGACATGC
 AAGGAGGAGTTACAGTCAACGGCGACCCAGTCAAGAAGGTGATCTGCACCGGGCCCAACGACACGTGCG
 CGGGCAGCCCCGCCACACGGTGCCTCAGTGTGCTACGGCTTTTGCATCGACCTGCTCATCAAGTGGC
 ACGGACCATGAACCTCACCTACGAGGTGCACCTGGTGGCAGATGGCAAGTTGCGCACACAGGAGCGGGT
 AACACAGCAACAAGAAGGAGTGGAAATGGGATGATGGGCGAGCTGCTCAGCGGCAGGCAGACATGATCG
 TGGCGCCGCTAACATAAACAACGAGCGCGCAGTACATCGAGTTTCCAAGCCCTTCAAGTACCAGGG
 CCTGACTATTCTGGTCAAGAAGGAGATCCCCGGAGCACGCTGGACTCGTTCATGCACCGCTTCCAGAGC
 AACTGTGGCTGTGGTGGGGCTGTGGTGCACGTGGTGGCCGTGATGCTGTACCTGCTGGACCGCTTCA
 GCCCTTCGGCCGTTCAAGGTGAACAGCGAGGAGGAGGAGGAGGACGCACTGACCTGTCTCGGCCAT
 GTGGTTCTCCTGGGGCTCCTGCTCAACTCCGGCATCGGGGAAGGCGCCCCCAGAAGCTTCTCAGCGCGC
 ATCCTGGGCATGGTGTGGGCCGGCTTTGCCATGATCATCGTGGCCTCCTACACCGCCAACCTGGCGGCT
 TCCTGGTGTGGACCGCCGGAGGAGCGCATCACGGGCATCAACGACCCTCGGCTGAGGAACCCCTCGGA
 CAAGTTTATCTACGCCACGGTGAAGCAGAGTCCGTGGATATCTACTCCGGCGCCAGGTGGAGCTGAGC
 ACCATGTACCGGCATATGGAGAAGCACAACACTACGAGAGTCCGGCGGAGGCCATCCAGGCCGTGAGAGACA
 ACAAGCTGCATGCCTTCACTGGGACTCGGCGGTGCTGGAGTTCGAGGCCCTCGCAGAAGTCCGACCTGGT
 GACGACTGGAGAGCTGTTTTCCGCTCGGGCTTCGGCATAGGCATGCGCAAAGACAGCCCTGGAAGCAG
 AACGTCTCCCTGTCCATCCTCAAGTCCCACGAGAATGGCTTCATGGAAGACCTGGACAAGACGTGGGTTT
 GGTATCAGGAATGTGACTCGCGCAGCAACGCCCTGCGACCCCTACTTTTGAACAATGGCCGGGTCTT
 CATGCTGGTAGCTGGGGCATCGTGGCCGGATCTTCTGATTTTCATCGAGATTGCCTACAAGCGGCAC
 AAGGATGCTCGCCGAAGCAGATGCAGTGGCCTTTGCCCGCTTAACGTGTGGCGGAAGAACCTGCAGA
 GCACCGGGGTGGACGCGGCGCTTTGCAAAACCAAAAAGACACAGTGTGCCGCGACGCGCTATTGAGAG
 GGAGGAGGCCAGCTGCAGCTGTGTTCCCGTCATAGGGAGAGC

ACGCGTACGCGGCCGCTCGAG – GFP Tag – GTTTAA

Protein Sequence: >RG211588 representing NM_021569
 Red=Cloning site Green=Tags(s)

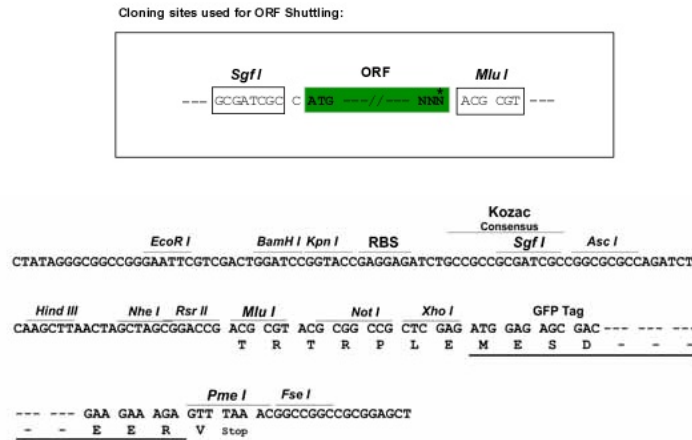
MSTMRLTLALLFSCSVARAACDPKIVNIGAVLSTRKHEQMFREAVNQANKRHGSKWIQLNATSVTHKPN
 AIQMALSVCEDLISSQVYAILVSHPTPNDFHTPTPVSYTAGFYRIPVGLTTRMSIYSDKSIHLSFLRT
 VPPYSHQSSVWFEMMRVYSWNHIIILLVSDDEGRAAQKRLLEERESKAQKLVQFDPGTKNVTALLME
 AKLEARVILSASEDDAATVYRAAAMLNMTGSGYVWL VGEREISGNALRYAPDGLGLQLINGKNESA
 ISDAVGVAQAVHELLEKENITDPPRGCVGNTNIWKTGPLFKRVLMSKYADGVTGRVEFNEDGDRKFAN
 YSIMNLQNRKLVQVGIYNGTHVIPNDRKIIWPGGETEKPRGYQMSRTRKIVTIHQEPFVYVKPTLSDGTC
 KEEFTVNGDPVKKVICTGPNDTSPGSPRHTVPQCCYGFCIDLLIKLARTMNFYEVHLVADGKFGTQERV
 NNSNKKEWNGMMGELLSGQADMIVAPLTINNERAQYIEFSKPFKYQGLTILVKKEIPRSTLDSFMQPFQS
 TLWLLVGLSVHVAVMLYLLDRFSPFGRFKVNSEEEEDALTLSSAMWFSWVLLNSGIGEGAPRSFSAR
 ILGMVWAGFAMIIVASYANLAFLVDRPEERITGINDPRLRNPDKFIYATVKQSSVDIYFRQVELS
 TMYRHMEKHNYESAAEAIQAVRDNKLHAFIWDSAVLEFEASQKCDLVTTGELFFRSFGFGIMRKDSPWKQ
 NVSLSILKSHENGFMEDLTKTWVRYQECDSRSNAPATLTFENMAGVFMLVAGGIVAGIFLIFIEIAYKRH
 KDARRKMQQLAFAAVNVWRKLNQSTGGGRGALQNQKDTVLPRAIEREEGQLQLCSRHRES

TRTRPLE - GFP Tag - V

Restriction Sites:

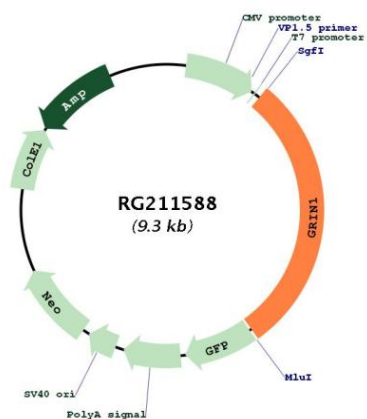
SgfI-MluI

Cloning Scheme:



ACCN:	NM_021569
ORF Size:	2703 bp
OTI Disclaimer:	The molecular sequence of this clone aligns with the gene accession number as a point of reference only. However, individual transcript sequences of the same gene can differ through naturally occurring variations (e.g. polymorphisms), each with its own valid existence. This clone is substantially in agreement with the reference, but a complete review of all prevailing variants is recommended prior to use. More info
OTI Annotation:	This clone was engineered to express the complete ORF with an expression tag. Expression varies depending on the nature of the gene.
Components:	The ORF clone is ion-exchange column purified and shipped in a 2D barcoded Matrix tube containing 10ug of transfection-ready, dried plasmid DNA (reconstitute with 100 ul of water).
Reconstitution Method:	<ol style="list-style-type: none">1. Centrifuge at 5,000xg for 5min.2. Carefully open the tube and add 100ul of sterile water to dissolve the DNA.3. Close the tube and incubate for 10 minutes at room temperature.4. Briefly vortex the tube and then do a quick spin (less than 5000xg) to concentrate the liquid at the bottom.5. Store the suspended plasmid at -20°C. The DNA is stable for at least one year from date of shipping when stored at -20°C.
RefSeq:	NM_021569.4
RefSeq Size:	4289 bp
RefSeq ORF:	2706 bp
Locus ID:	2902
UniProt ID:	Q05586
Cytogenetics:	9q34.3
Domains:	lig_chan, ANF_receptor
Protein Families:	Druggable Genome, Ion Channels: Glutamate Receptors, Transmembrane
Protein Pathways:	Alzheimer's disease, Amyotrophic lateral sclerosis (ALS), Calcium signaling pathway, Huntington's disease, Long-term potentiation, Neuroactive ligand-receptor interaction
Gene Summary:	The protein encoded by this gene is a critical subunit of N-methyl-D-aspartate receptors, members of the glutamate receptor channel superfamily which are heteromeric protein complexes with multiple subunits arranged to form a ligand-gated ion channel. These subunits play a key role in the plasticity of synapses, which is believed to underlie memory and learning. Cell-specific factors are thought to control expression of different isoforms, possibly contributing to the functional diversity of the subunits. Alternatively spliced transcript variants have been described. [provided by RefSeq, Jul 2008]

Product images:



Circular map for RG211588