

Product datasheet for **RG211587**

CACNA1F (NM_005183) Human Tagged ORF Clone

Product data:

Product Type:	Expression Plasmids
Product Name:	CACNA1F (NM_005183) Human Tagged ORF Clone
Tag:	TurboGFP
Symbol:	CACNA1F
Synonyms:	AIED; Cav1.4; Cav1.4alpha1; COD3; COD4; CORDX; CORDX3; CSNB2; CSNB2A; CSNBX2; JM8; JMC8; OA2
Mammalian Cell Selection:	Neomycin
Vector:	pCMV6-AC-GFP (PS100010)
E. coli Selection:	Ampicillin (100 ug/mL)
ORF Nucleotide Sequence:	>RG211587 representing NM_005183 Red=Cloning site Blue=ORF Green=Tags(s)

TTTTGTAATACGACTCACTATAGGGCGGCCGGAATTCGTCGACTGGATCCGGTACCGAGGAGATCTGCC
GCC**CGATCGCC**

ATGTCGGAATCTGAAGGCGGGAAAGACACCACCCAGAGCCAGTCCAGCCAATGGGGCAGGCCCTGGTC
CCGAATGGGGGCTGTGCCCGGGCCCCAGCTGTGGAAGGTGAAAGCAGTGGGGCATCAGGCCTAGGGAC
CCCTAAGCGAAGAAACCAGCACAGCAAGACAAGACAGTGGCAGTGGCCAGTGCCAGCGGTACCTCGG
GCACTCTTCTGCCTCACCTGGCCAATCCTCTGCGACGGTCTGCATCAGCATCGTGGAGTGAAGCCCT
TCGACATCCTCATCCTGCTGACCATCTTGCCAACTGCGTGGCCCTGGGAGTTTACATCCCTTCCCTGA
GGAGACTCCAACACTGCCAACCAACCTGGAGCAGGTGGAGTACGTATTCCTGGTGATTTTCACTGTG
GAGACGGTGCTCAAGATCGTGGCCTACGGGCTGGTGTCCACCCAGCGCTACATCCGCAATGGTGGA
ACCTACTCGACTTCATCATCGTCTGGTGGGCTGTTACGCGTTCTGCTGGAGCAGGGCCCCGGACGGCC
AGGCGACGCCCCGCACACCGGGGAAAGCCAGGAGGCTTCGATGTGAAGGCATTGAGGGCGTTTCGGGTG
CTGCGGCCACTGAGGCTGGTGTCTGGGGTCCCAGCCTGCACATAGTGCTCAATTCATCATGAAGGCTC
TGGTGCCGCTGCTGCACATTGCACTGCTCGTCTTCTCGTCATCATCATTATGCCATCATTGGGCTCGA
GCTGTTCTTGGACGAATGCACAAGACGTGCTACTTCTGGGATCCGACATGGAAGCGGAGGAGGCCCA
TCGCCCTGTGCGTCTTCCGGATCAGGGCGTGCCTGCACGCTGAACCAGACTGAGTGCCCGGGCGCTGGC
CAGGGCCCAATGGAGGCATCACCAACTTTGACAACCTTCTTTCGCCATGCTGACAGTCTTCCAGTGTGT
CACCATGGAAGGCTGGACCGATGTGCTACTGGATGCAAGATGCCATGGGGTATGAACCTGCCCTGGGTG
TACTTTGTGAGCCTTGTATCTTTGGGTCTTCTCGTCCTCAACCTTGTGCTTGGCGTCTGAGTGGGG
AGTTCTCAAGGAGAGAGAGAAAGCGAAAGCTCGCGGGGACTTCCAGAAGCAGCGGGAGAAAGCAGCAGAT
GGAGGAAGACCTGCGGGGCTACCTGGACTGGATCACTCAAGCCGAAGAGCTGGACATGGAGGACCCCTCC
GCCGATGACAACCTTGGTTCTATGGCTGAAGAGGGCCGGGCGGGCCATCGGCCACAGCTGGCCGAGCTGA
CCAATAGGAGGCGTGGACGTCTGCGCTGGTTCAGTCATTCTACTCGTCCACACTCCACCAGCAGCCA



TGCCAGCCTCCCAGCCAGTGACACCGGTTCCATGACAGAGACCCAAGGCGATGAGGATGAGGAGGAGGGG
GCTCTGGCCAGCTGTACACGCTGCCTAAACAAGATCATGAAAACCAGAGTCTGCCGCCGCTCCGCCGAG
CCAACCGGGTCTTTCGGGCACGCTGCCGTGGGCAGTGAAGTCCAATGCCTGCTACTGGGCTGTGCTGTT
GCTCGTCTTCTCAACACGTTGACCATCGCCTCTGAGCACCACGGGCAGCCTGTGTGGCTCACCAGATC
CAGGAGTATGCCAACAAAGTGTGCTGTCTGTTACGGTGGAGATGCTTCTCAAATTGTACGGTCTGG
GCCCTCTGCCTATGTGCTTCTTCTCAACCGCTTTGACTGCTTTGTGGTCTGTGGGGCATCTAGAC
GACCACCTTGGTGGAGGTGGCGCCATGCAGCCCTTGGGCATCTCAGTGCCTCCGATGTGTGCCCTCCTC
AGGATCTTTAAGTCAACCAGACACTGGGCTTCTCTGAGCAATCTGGTGGCATCCCTGCTCAATTCATGA
AATCCATCGCATCCTTGCTGCTTCTCCTTCTCCTTCTCATCATTATCTTCTCCCTGCTTGGCATGCAGT
GTTTGGGGCAAGTTCAACTTTGACCAGACCCACACCAAGCGAAGCACCTTTGACACGTTCCCCAGGCC
CTCCTCACTGTCTTTCAGATCCTGACAGGTGAGGACTGGAACGTGGTCAATGATGATGGTATCATGGCAT
ATGGTGGCCCTTCTTCCAGGAATGTTGGTGTGCATCTATTTTCATCTTCTTCTCATCTGTGGCAACTA
CATCTGTTGAACGTGTTTCTTGCCATTGCTGTGGACAACCTGGCCAGTGGAGATGCAGGCACTGCCAAG
GACAAGGGCGGGGAGAAGAGCAATGAGAAGGATCTCCACAGGAGAATGAAGGCCTGGTGCCTGGTGTGG
AGAAAGAGGAAGAGGAGGTGCAAGGAGGAAGGAGCAGACATGGAGGAGGAGGAGGAGGAAGAAGA
GGAAGAAGAGGAAGAAGAGGAAGAGGGTGCAGGGGGTGTGGAACCTCTGCAGGAAGTGTACCCAAGGAG
AAGGTGGTACCCATCCCTGAGGGCAGCGCCTTCTTCTGCCTCAGCCAAACCAACCCGCTGAGGAAGGGCT
GCCACACCCTCATCCACCATCATGTCTTACCAATCTTATCCTGGTGTTCATCATCCTCAGCAGTGTGTC
CCTGGCCGCTGAGGACCCCATCCGAGCCCACTCCTTCCGCAACCATATTCTGGGTACTTCGATTATGCC
TTCACCTCCATTTTCACTGTGGAGATTCTACTAAAGATGACAGTGTGGGGCCTTCTGCACCCGCGGT
CCTTCTGCCGTAGCTGGTTAATATGTTGGATCTGCTGGTGGTCAAGTGTGCCCTCATCTCTTGGCAT
CCACTCCAGGCCATCTCGTGGTGAAGATTCTGCGAGTACTCCGAGTACTGCGGCCCTCCGAAACCATCA
AACAGGGCAAGGGACTCAAGCATGTGGTGCAGTGTATTTGTGGCCATCCGGACCATCGGAACCATCA
TGATTGTCAACACACTTCTGCAATTTATGTTCCGCTGCATCGGGGTGCAGCTTCTCAAGGGAAATTCTA
CACCTGCACGGACGAGGCCAAACACACCCTCAAGAATGCAAGGGCTCCTTCTGGTATACCCAGATGGA
GACGTGTACGGCCCTGGTCCGGGAGCGGCTCTGGTCAACAGTGATTTCAACTTTGACAATGTCTTT
CAGCCATGATGGCCCTGTTCACTGTCTCCACCTTTGAAGGCTGGCCTGCACTGCTATACAAGGCCATCGA
TGCATATGCAGAGGACCATGGCCCATCTATAATTACCGTGTGGAGATCTCAGTGTCTTTCATTGTCTAC
ATCATCATATTGCGTCTTTCATGATGAACATCTTCGTGGGCTTCGTATCATCACTTCCGTGCCCAGG
GCGAGCAGGAGTACAAAACGTGAGCTGGACAAGAACCAGCGTCAATGTGTGGAATATGCCCTCAAGGC
CCAGCCACTCCGCCGTTACATCCCAAGAACCAGCATCAGTATCGTGTGGGCCACTGTGAACCTGCT
GCCTTTGAGTACCTGATGTTCTGCTCATCCTGCTCAACACAGTTGCCCTAGCCATGCAGCACTATGAGC
AGACTGCTCCCTTCAACTATGCCATGGACATCCTCAACATGGTCTTCACTGGCCTCTTCACTATTGAGAT
GGTGTCAAAATCATCGCCTTCAAGCCCAAGCATTACTTCACTGATGCCTGGAACACGTTTGACGCTCTT
ATTGTGGTGGGCAGCATAGTGGATATGCGGCTCACTGAAGTCAATAATGGTGGCCACCTTGGCGAGAGCT
CTGAGGACAGCTCCCGCATTTCCATTACCTTCTTTCGCTCTTCCGAGTATGCGGCTGGTCAAGCTTCT
CAGTAAGGGTGAAGGGATCCGCACATTGCTCTGGACATTCATCAAGTCTTCCAGGCCTTGCCTATGTG
GCTCTTCTCATCGCAATGATATTTCTTATCTATGCCGTCATTGGCATGCAGATGTTGGCAAGGTGGCTC
TTCAGGATGGCACACAGATAAACCGAAACAACACTTCCAGACCTTCCACAGGCTGTGCTGCTTCTGTT
CAGGTGTGCCACTGGTGAAGCATGGCAGGAGATAATGCTTGCAGCCTTCCCGAAATCGGTGTGATCCT
GAGTCTGACTTCCGCCCTGGTGAAGAGTTTACCTGTGGTGAATTTTGCATCGCCTATTTTCATCAGCT
TCTTATGCTCTGTGCCCTTCTGATCATAAATCTCTTGTGGTGTGATCATGGACAACCTTGTATTATCT
CACCAGAGATTGGTCCATCCTGGGCCCATCACCTTGTGAATTCAGAGGATCTGGTCTGAATATGAC
CCTGGGGCAAGGGCCGATCAAACACTTGGATGTGGTGGCCTGCTGAGACGTATCCAGCCCCCTCTGG
GATTTGGGAAGCTGTGCCACACCGAGTGGCCTGCAAGAGACTTGTGGCAATGAACATGCCCTCAACTC
AGATGGGACGGTACATTCAACGCCACACTCTTGGCCTGGTCCGGACATCCCTGAAGATCAAAACAGAA
GGGAACCTGGAGCAAGCCAACCAGGAGCTGCGGATTGTATCAAAAAGATCTGGAAGCGGATGAAACAGA
AGCTGCTAGATGAGGTATCCCCCACCAGACGAGGAGGAGTACCCTGGGCAAAATTCACGCCACATT
TCTGATCCAGGACTATTTCCGCAAAATCCGGCGGAGGAAAGAAAAAGGGCTACTAGGCAACGACGCCGCC
CCTAGCACCTTCTCCGCCCTTACGGCTGGTCTGCGGAGCCTGCAGGACTTGGTCTGAGATGCGGCAGG
CCCTCACCTGTGACACAGAGGAGGAGGAAGAAGAGGGGCAGGAGGGAGTGGAGGAGGAAGATGAAAAGGA
CTTGGAAACTAACAAAGCCAGATGGTCTCCAGCCCTCAGCTCGCCGGGGCTCCGGGATTTCTGTGCTC

CTGCCTGTCGGGGACAGACTTCCAGATTCACTCTCCTTTGGGCCAGTGATGATGACAGGGGGACTCCCA
 CCTCCAGTCAGCCAGTGTGCCCCAGGCTGGATCCAACACCCACAGGAGAGGCTCTGGGGCTCTCATTTT
 CACCATCCCAGAAGAAGGAAATTCTCAGCCCAAGGGAACCAAAGGGCAAAAACAGCAAGATGAGGATGAG
 GAAGTCCCTGATCGGCTTCTACCTAGATGAGCAGGCAGGGACTCCCCCGTCTCAGTCTTTTGGCCAC
 CTCACAGAGCTCAGAGATACATGGATGGGCACCTGGTACCACGCCGCCGTCTGCTGCCCCCACACCTGC
 AGGTCGGAAGCCCTCCTTCAACATCCAGTGTCTGCAGCGCCAGGGCAGTTGTGAGGATTTACCCATCCCA
 GGCACCTATCATCGTGGGCGAAATTCAGGGCCCAATAGGGCTCAGGGTTCTGGGCAACACCACCTCAGC
 GGGGTCGGCTCCTGTATGCCCCCGCTGTTGTTGGTGAAGAGGGCCAGCGGGGGAGGGGTACCTCGGCAG
 ATCCAGTGGCCCACTGCGCACCTTACCTGTCTGCACGTGCTGGAACCCACTCGGACCCAGCCATGGG
 AAGAGGGGCAGTGCCGACAGCTTGGTGGAGGCTGTGCTTATCTCAGAGGGTCTGGGCTCTTTGCTCGAG
 ACCCACGTTTCTGGCCCTGGCCAAGCAGGAGATTGCAGATGCGTGTGCGCTGACGCTGGATGAGATGGA
 CAATGCTGCCAGTGACCTGCTGGCACAGGGAACCAGCTCTCTATAGCGACGAGGAGTCCATCTCTCC
 CGTTCGATGAGGAGACTTGGGAGACGAGATGGCTGCGTCCACGCCCTC

ACGCGTACGCGGCCGCTCGAG - GFP Tag - GTTTAA

Protein Sequence:

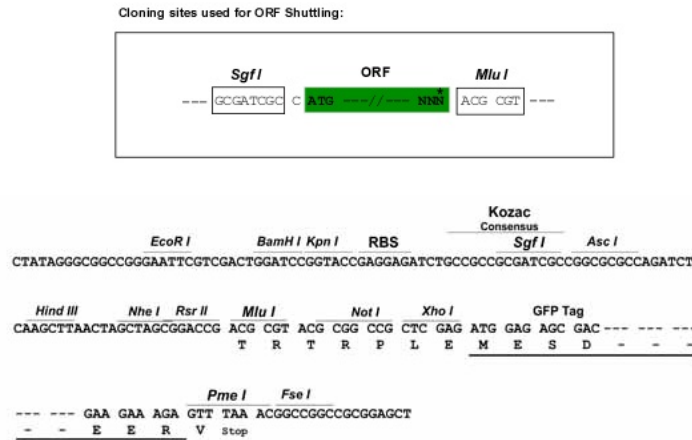
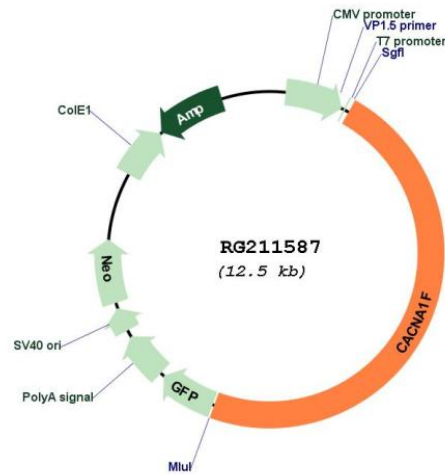
>RG211587 representing NM_005183
 Red=Cloning site Green=Tags(s)

MSESEGGKDTTPEPSPANGAGPGPEWGLCPGPPAVEGESSGASGLGTPKRRNQHSKHKTVAVASAQRSPR
 ALFCLTLANPLRRSCISIVWKPFDILILLTIFANCVALGVYIPFPEDDSNTANHNLEQVEYVFLVIFTV
 ETVLKIVAYGLVLHPSAYIRNGWNLDFIIVVGLFVLLLEQGPGRPGDAPHTGGKPGGFDVKALRAFRV
 LRPLRLVSGVPSLHIVLNSIMKALVPLLHIALLVLFVIIYAIIGLELFLGRMHKTCYFLGSDMEAEEDP
 SPCASSGSGRACTLNQTECRGRWPNGGITTDFNFFFAMLTVFQCVTMEGWTDVLYWMQDAMGYELPWV
 YFVSLVIFGSFFVLNLVLGVLSEGFSKEREKAKARGDFQKQREKQMEEDLRGYLDWITQAEELDMEDPS
 ADDNLGSMEEGRAGHRPQLAELTNRRLRGRWFSHSTRSTHSTSSHASLPASDTGSMETQGDDEDEEG
 ALASCTRCLNKIMKTRVCRRLRRANRVLRARCRRAVKSNAKYAVLFLVFLNTLTIASEHHGQPWLTIQI
 QEYANKVLLCLFTVEMLLKLYGLGPSAYVSSFFNRFDVVCVGGILETTLVEVGAMQPLGISVLRVRL
 RIFKVRHWASLNLVASLLNSMKSIASLLLLLFLFIIIFSLGMQLFGGKFNFDQHTKRSTFDTFPQA
 LLTVFQILTGEDWNVVMDGIMAYGGPFPGMLVCIYFIIIFICGNYILLNVFLAIVDNLASGDAGTAK
 DKGGKESNEKDLQENEGLVPGVEKEEEEEGARREGADMEEEEEEEEEEEEEEEEEEGAGGVELLQEVVPE
 KVVPPIEGSAFFCLSQTNPLRKGCHTLIHHHVFTNLILVFIILSSVSLAAEDPIRAHSFRNHILGYFDYA
 FTSIFTVEILLKMTVFGAFLHRGSFCRSWFNMLDLLVSVSLISFGIHSASISVVKILRVLRLRPLRAI
 NRAKGLKHVVQCVFAIRTIGNIMIVTLLQFMFACIGVQLFKGKFTCTDEAKHTPQECKGSFLVYPDG
 DVSRPLVRERLWVNSDFNFDNLSAMMALFTVSTFEGWPALLYKAIDAYAEDHGPIYNYRVEISVFFIVY
 IIIIAFFMMNIFVGFVIIITFRAQGEQEYQNCELDKNQRQCVEYALKAQPLRRYIPKNPHQYRVWATVNSA
 AFEYLMFLILLNTVALAMQHYEQTAPFNAMDILNMVFTGLFTIEMVLKIIAFKPKHYFTDAWNTFDAL
 IIVGSIVDIAVTEVNNGGHLEGESEDSSRISITFFRLFRVMRLVKLLSKGEGIRTLTLLWTFIKSFQALPYV
 ALLIAMIFFIYAVIGMQMFGKVALQDGTQINRNNNFQTFPQAVLLLFRCATGEAWQEIMLASLPGNRCDP
 ESDFGPGEFTCGSNFAIAYFISFFMLCAFLIINLFAVAVIMDNFDYLTRDWSILGPHHLDEFKRIWSEYD
 PGAKGRIKHLDVVALLRRIQPPLGFGKLCPHRVACKRLVAMNMLNSDGTVTFNATLFAVVRTSLKIKTE
 GNLEQANQELRIVIKKIWKRMKQKLLDEVIPPPDEEVEVTVGKFYATFLIQDYFRKFRRRKEKGLLGNDA
 PSTSSALQAGLRSLQDLGPEMRQALTCDEEEEEEGQEGVEEEDKLETNKATMVSQPSARRGSGISVS
 LPVGDRLPDSLFGPSDDDRGTPTSSQPSVPQAGSNTHRRGSGALIFTIPEEGNSQPKGTGQNKQDEDE
 EVPDRLSYLDEQAGTPPCSLLPPHRAQRYMDGHLVPRRRLPPTPAGRKPSTFIQCLQRQGSCELDPIP
 GTYHRGRNSGNRAQGSWATPPQRGRLLYAPLLLVEEGAAGEGYLGRSSGPLRTFTCLHVPGTHSDPSHG
 KRGSADSLVEAVLISEGLGFARDPRFVALAKQEIADACRLTLEMDNAAASDLLAQGTSSLYSDEESILS
 RFDEEDLGDEMACVHAL

TRTRPLE - GFP Tag - V

Restriction Sites:

Sgfl-MluI

Cloning Scheme:

Plasmid Map:


ACCN: NM_005183

ORF Size: 5931 bp

OTI Disclaimer: The molecular sequence of this clone aligns with the gene accession number as a point of reference only. However, individual transcript sequences of the same gene can differ through naturally occurring variations (e.g. polymorphisms), each with its own valid existence. This clone is substantially in agreement with the reference, but a complete review of all prevailing variants is recommended prior to use. [More info](#)

OTI Annotation: This clone was engineered to express the complete ORF with an expression tag. Expression varies depending on the nature of the gene.

Components:	The ORF clone is ion-exchange column purified and shipped in a 2D barcoded Matrix tube containing 10ug of transfection-ready, dried plasmid DNA (reconstitute with 100 ul of water).
Reconstitution Method:	<ol style="list-style-type: none">1. Centrifuge at 5,000xg for 5min.2. Carefully open the tube and add 100ul of sterile water to dissolve the DNA.3. Close the tube and incubate for 10 minutes at room temperature.4. Briefly vortex the tube and then do a quick spin (less than 5000xg) to concentrate the liquid at the bottom.5. Store the suspended plasmid at -20°C. The DNA is stable for at least one year from date of shipping when stored at -20°C.
RefSeq:	NM_005183.2 , NP_005174.2
RefSeq Size:	6080 bp
RefSeq ORF:	5934 bp
Locus ID:	778
UniProt ID:	O60840
Cytogenetics:	Xp11.23
Protein Families:	Druggable Genome, Ion Channels: Calcium, Transmembrane
Protein Pathways:	Alzheimer's disease, Arrhythmogenic right ventricular cardiomyopathy (ARVC), Calcium signaling pathway, Cardiac muscle contraction, Dilated cardiomyopathy, GnRH signaling pathway, Hypertrophic cardiomyopathy (HCM), MAPK signaling pathway, Vascular smooth muscle contraction
Gene Summary:	This gene encodes a multipass transmembrane protein that functions as an alpha-1 subunit of the voltage-dependent calcium channel, which mediates the influx of calcium ions into the cell. The encoded protein forms a complex of alpha-1, alpha-2/delta, beta, and gamma subunits in a 1:1:1:1 ratio. Mutations in this gene can cause X-linked eye disorders, including congenital stationary night blindness type 2A, cone-rod dystrophy, and Aland Island eye disease. Alternatively spliced transcript variants encoding multiple isoforms have been observed. [provided by RefSeq, Aug 2013]