

Product datasheet for **RG211535**

SGK3 (NM_170709) Human Tagged ORF Clone

Product data:

Product Type:	Expression Plasmids
Product Name:	SGK3 (NM_170709) Human Tagged ORF Clone
Tag:	TurboGFP
Symbol:	SGK3
Synonyms:	CISK; SGK2; SGKL
Mammalian Cell Selection:	Neomycin
Vector:	pCMV6-AC-GFP (PS100010)
E. coli Selection:	Ampicillin (100 ug/mL)



[View online »](#)

ORF Nucleotide Sequence:

>RG211535 representing NM_170709
 Red=Cloning site Blue=ORF Green=Tags(s)

TTTTGTAATACGACTCACTATAGGGCGGCCGGAATTCGTCGACTGGATCCGGTACCGAGGAGATCTGCC
 GCC**CGCATCGCC**

ATGCAAAGAGATCACACCATGGACTACAAGGAAAGCTGCCCAAGTGAAGCATTCCAGCTCCGATGAAC
 ACAGAGAGAAAAAGAAGAGGTTTACTGTTTATAAAGTTCTGGTTTCAGTGGGAAGAAGTGAATGGTTTGT
 CTTCAGGAGATATGCAGAGTTTGATAAACTTTATAAACTTTAAAAAACAGTTTCTGCTATGGCCCTG
 AAGATTCTGCCAAGAGAATATTTGGTGATAATTTGATCCAGATTTTATAAACAAAGACGAGCAGGAC
 TAAACGAATTCATTACAGAACCTAGTTAGGTATCCAGAATTTATAACCATCCAGATGTCAGAGCATTCT
 TCAATGGACAGTCCAAAACACCAGTCAGATCCATCTGAAGATGAGGATGAAAGAAGTTCTCAGAAGCTA
 CACTCTACCTCACAGAACATCACTGGGACCGTCTGAAATCCTCATGCCAAACCACTGACTTTGATT
 TCTTAAAAGTTATTGGAAAAGGCAGCTTTGGCAAGTTCTTCTTGCAAAACGGAACTGGATGGAAAATT
 TTATGCTGTCAAAGTGTACAGAAAAAATAGTTCTCAACAGAAAAGAGCAAAAACATATTATGGCTGAA
 CGTAATGTGCTCTTGAAAATGTGAAACATCCGTTTTTGGTTGGATTGCATTATTCCTTCCAAACAACCTG
 AAAAGCTTTATTTGTTCTGGATTTTGTAAATGGAGGGGAGCTTTTTTCCACTTACAAAGAGAACGGTC
 CTTTCTGAGCACAGAGCTAGGTTTTACGCTGCTGAAATTGCTAGTGCATTGGGTTACTTACATTCCATC
 AAAATAGTATACAGAGACTTGAAACCAGAAAATATTCTTTGGATTACAGTAGGACATGTTGTCTTAACAG
 ATTTTGGGCTTTGTAAAGAAGGAATTGCTATTTCTGACACCACTACCACATTTTGTGGGACACCAGAGCC
 TCCTTTTATTGCCGAGATGTTGCTGAAATGTATGACAATATCCTTCACAAACCCTAAGTTTGGAGCCA
 GGAGTGAGTCTTACAGCCTGGTCCATTTGGAAGAATCCTAGAAAAGACAGGCAAAAATCGACTTGGTG
 CCAAGGAAGACTTTCTTGAATTCAGAATCATCTTTTTTTGAATCACTCAGCTGGGCTGACCTTGTACA
 AAAGAAGATTCCACCACCATTTAATCCTAATGTGGCTGGACCAGATGATATCAGAAAATTTGACACAGCA
 TTTACAGAAAGAACAGTTCCATATTCTGTGTGTATCTTCTGACTATTCTATAGTGAATGCCAGTGTAT
 TGGAGGCAGATGATGCATTCTGGTTTCTCTTATGCACCTCCTCAGAAGACTTATTTTTG

ACGCGTACGCGGCCGCTCGAG - GFP Tag - GTTTAA

Protein Sequence:

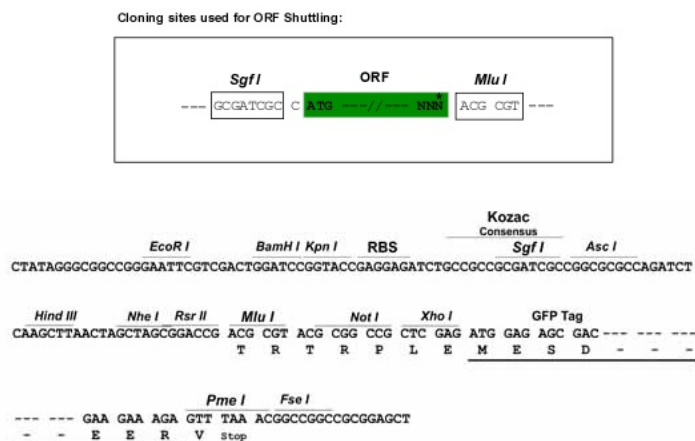
>RG211535 representing NM_170709
 Red=Cloning site Green=Tags(s)

MQRDHTMDYKESCPVSIPSSDEHREKKRFTVYKVLVSVGRSEWFVFRRYAEFDKLYNTLKKQFPAMAL
 KIPAKRIFGDNFDPDFIKQRRAGLNEFIQNLVRYPELYNHPDVRAFLQMDSPKHQSDPSEDEDERSSQKL
 HSTSQNINLGPSPGNPHAKPTDFDLKVIKGSFGKVLAKRKLKGKLYAVKVLQKKIVLNRKEQKHIMAE
 RNVLLKNVKHPFLVGLHYSFQTTEKLYFVLDVNGGELFFHLQRERSFPEHRARFYAAEIASALGYLHSI
 KIVYRDLKPENILLDSVGHVVLDFGLCKEGIAISDTTTTFCGTPEPPFYCRDVAEMYDNILHKPLSLRP
 GVSLTAWSIILEELLEKDRQNLGAKEDFLEIQNHPPFESLSWADLVQKKIPPPFNPVAGPDDIRNFDTA
 FTEETVPYSVCVSSDYSIVNASVLEADDAFVGFSYAPPSDFL

TRTRPLE - GFP Tag - V

Restriction Sites:

SgfI-MluI

Cloning Scheme:


ACCN: NM_170709

ORF Size: 1392 bp

OTI Disclaimer: The molecular sequence of this clone aligns with the gene accession number as a point of reference only. However, individual transcript sequences of the same gene can differ through naturally occurring variations (e.g. polymorphisms), each with its own valid existence. This clone is substantially in agreement with the reference, but a complete review of all prevailing variants is recommended prior to use. [More info](#)

OTI Annotation: This clone was engineered to express the complete ORF with an expression tag. Expression varies depending on the nature of the gene.

Components: The ORF clone is ion-exchange column purified and shipped in a 2D barcoded Matrix tube containing 10ug of transfection-ready, dried plasmid DNA (reconstitute with 100 ul of water).

Reconstitution Method:

1. Centrifuge at 5,000xg for 5min.
2. Carefully open the tube and add 100ul of sterile water to dissolve the DNA.
3. Close the tube and incubate for 10 minutes at room temperature.
4. Briefly vortex the tube and then do a quick spin (less than 5000xg) to concentrate the liquid at the bottom.
5. Store the suspended plasmid at -20°C. The DNA is stable for at least one year from date of shipping when stored at -20°C.

RefSeq: [NM_170709.3](#)

RefSeq Size: 4059 bp

RefSeq ORF: 1395 bp

Locus ID: 23678

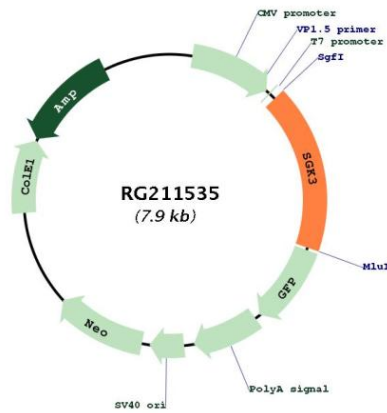
UniProt ID: [Q96BR1](#)

Cytogenetics: 8q13.1

Protein Families: Druggable Genome, Protein Kinase

Gene Summary: This gene is a member of the Ser/Thr protein kinase family and encodes a phosphoprotein with a PX (phox homology) domain. The protein phosphorylates several target proteins and has a role in neutral amino acid transport and activation of potassium and chloride channels. Alternate transcriptional splice variants, encoding different isoforms, have been characterized. [provided by RefSeq, Jul 2008]

Product images:



Circular map for RG211535