

Product datasheet for **RG211533**

SLCO4C1 (NM_180991) Human Tagged ORF Clone

Product data:

Product Type:	Expression Plasmids
Product Name:	SLCO4C1 (NM_180991) Human Tagged ORF Clone
Tag:	TurboGFP
Symbol:	SLCO4C1
Synonyms:	OATP-H; OATP-M1; OATP4C1; OATPX; PRO2176; SLC21A20
Mammalian Cell Selection:	Neomycin
Vector:	pCMV6-AC-GFP (PS100010)
E. coli Selection:	Ampicillin (100 ug/mL)



[View online »](#)

ORF Nucleotide Sequence:

>RG211533 representing NM_180991
 Red=Cloning site Blue=ORF Green=Tags(s)

TTTTGTAATACGACTCACTATAGGGCGGCCGGAATTCGTCGACTGGATCCGGTACCGAGGAGATCTGCC
 GCC**CGGATCGCC**

ATGAAGAGCGCCAAAGGTATTGAGAAGCTGGCTTTTGTCCCTCCAGCCCAGACATCCTGCGCCGCTTGT
 CTGCGTCGCCCTCCCAAATCGAAGTCTCTGCCTTGTCTCTGACCCCAAAGAGAGAATTCTCAGCCACA
 GGAGCTTCAGAAGCCCCAGGAGCCCCAGAAGTACCAGAGCCATCTCTGCCTTCAGCCCCCTCCAAATGTC
 TCCGAAGAGAAGCTCCGGTCACTGTGCTGTCCGAGTTTGAGGAGGGGTCTTACGGCTGGAGGAAGTCC
 ATCCTCAATGTCTCCAGCGCTGCAACACACCTGGAGGCTTTCTGCTTCACTACTGCCTCTTGGCCGTAC
 GCAAGGTATTGTAGTTAATGGCCTAGTAAATATTAGCATTTCCTGTTGAGAAGCGTTATGAAATGAAG
 AGTTCCCTGACTGGCCTGATTTCAAGCTACGATATTTCACTTCTGTTTGTCTTTATTTGTATCAT
 TCTTTGGTGAAAGAGGACATAAGCCGAGATGGCTTGCATTTGCAGCCTTTATGATTGGACTGGGAGCACT
 TGTATTCTCATTGCCACAATTTTCAGTGGAGAATATAAATTTGGGGTCTCTTTTGAAGACACTTGTGTA
 ACAACAAGGAATAGCACCAGTTGTACATCTTCACTTCTTCACTTCTAACTACTTGTATGTCTTCACT
 TGGGACAAGTATTGCTGGGGCAGGAGGAAGTCTCTTTATACTCTGGGAACAGCCTTTCTTGTATGATTC
 TGTGCCACACACAAGTCTTCTCTATATAGGAACCGTTATGCTATGTCAATCTTAGGCCCTGTATT
 GGCTATGTATTGGGAGGACAAGTCTAACCATATACATTGATGTTGCTATGGGAGAAAGCACTGATGTCA
 CTGAGGATGATCCGCGATGGTTGGGAGCTTGGTGGATTGGGTTTCTTCTATCATGGATCTTTGCTTGGTC
 TTTAATAATACCTTTTCTTGTCTTCCAAAACATTTACCAGGTACAGCAGAAATCAAGCTGGAAAACT
 TCCAGGCTCATCAGAGTAATAGTAATGCAGATGTGAAATTTGGAAAAAGTATTAAGATTTTCCAGCTG
 CTCTAAAGAATTTGATGAAGAATGCTGCTTTATGTGTTAGTTCTCAACTTCTCAGAAAGCCTTAAT
 TACTACTGGATTTGCTACATTTTACCTAAATTTATAGAAAATCAATTCGGATTGACATCCAGCTTCGCA
 GCTACTCTGGAGGGCTGTTTTAATTCCTGGAGCTGCTCTCGGTCAAATTTTAGGTGGCTTCTTGT
 CAAAATTCAGAATGACATGTAAAAACACAATGAAGTTTGCCTGTTTACATCTGGAGTTGCACCTACGCT
 GAGTTTTGTATTTATGTATGCCAAATGTGAAAATGAGCCATTTGCTGGTGTATCTGAATCATATAATGGG
 ACTGGAGAATTGGGAACTTGTAGCCCCTTGAATGCCAATTTGCTGCTGATCTGAATCATATAATGGG
 CTGTCTGTGGAGATGGAGTCCAATTTTTCTCCCTGCTTGCAGGCTGTTCAAACCCAGTTGCACACAG
 GAAGCCAAAGGTATATTACAAGTTCCTGTATTGAAAGGAAAACAGAAATAACATCCACTGCAGAACT
 TTTGGTTTTGAAGCTAAAGCTGGAAAATGTGAACTCATTGTGCGAACTGCCCATATTCCTTTGCATTT
 TCTTTATTGTAATTTTTTACCTTTATGGCCGCTACTCTATAACTGTGTCTATCCTAAGGTGTGTAA
 TCACAGACAACGGTCCCTAGCCTTGGGAATACAATTTATGGTCCTTCGATTATTAGGGACAATTCCTGGA
 CCAATTATATTTGGTTTCAATAGACAGCACATGTATTCTTTGGGATATAAATGATTGTGGAATTAAGG
 GAGCTTGTGGATTTATGATAACATCAAGATGGCCCATAGCTAGTAGCCATAAGTGTACTTGTAAAGT
 TATCACCATGTTCTTCAATGGATTTGCAATCTTTTGTATAAACCACCTCCATCAGCCACAGATGTGTCA
 TTTCATAAAGAGAATGCAGTTGTGACTAATGTTTTAGCAGAACAGGATCTCAACAAAATAGTAAAAGAAG
 GG

ACGCGTACGCGGCCGCTCGAG - GFP Tag - GTTTAA

Protein Sequence: >RG211533 representing NM_180991
 Red=Cloning site Green=Tags(s)

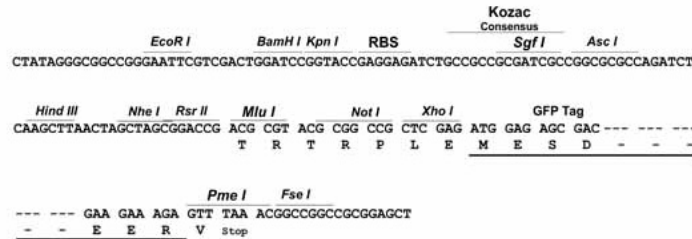
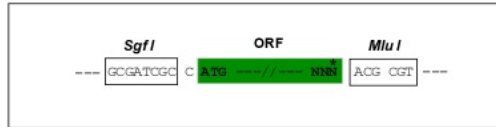
MKSAKGIENLAFVPPSPDILRRLSASPSQIEVSALSSDPQRENSQPQELQKPQEPQKSPEPSLPSAPPNV
 SEEKLRSLSLSEFEEGSYGWRNFHPQCLQRCNTPGGFLLHYCLLAVTQGI VVNGLVNISISTVEKRYEMK
 SSLTGLISSSYDISFCLLSL FVFFGERGHKPRWLAFAAFMI GLGALVFSLPQFFSGEYKLGSLFEDTCV
 TTRNSTSCTSSSTSLSNLYVVFILGQLLLGAGGTPLYTLGT AFLDSDVPTHKSSLYIGTG YAMSILGPAI
 GYVLGGQLLTIYIDVAMGESTDVTEDDPRWLGAWWIGFLLSWIFAWSLIIPFSCFPKHLPGTAEIQAGKT
 SQAHQSNADVKFGKSIKDFPAALKNLMKNAVFMCLVLSSTSEALITTFATFLPKFIENQFGLTSSFA
 ATLGGA VLIPGAALGQILGGFLVSKFRMTCKNTMKFALFTSGVALT LSFVFMYAKCENEPFAGVSES YNG
 TGELGNLIAPCNANCNCSRSYYPVCGDGVQYFSPCFAGCSNPVAHRKPKVYYNCSCIERKTEITSTAET
 FGFEAKAGKCETHCAKLPIFLC IFFIVIIFFTFMAGTPITVSILRCVNHQRSLALGIQFVMLRLLGTIPG
 PIIFGFTIDSTCILWDINDCGIKGACWIYDNIKMAHMLVAISVTCKVITMFFNGFAIFLYKPPPSATDVS
 FHKENAVVTNVLAEQDLNKIVKEG

TRTRPLE - GFP Tag - V

Restriction Sites: SgfI-MluI

Cloning Scheme:

Cloning sites used for ORF Shutting:



ACCN: NM_180991

ORF Size: 2172 bp

OTI Disclaimer: Due to the inherent nature of this plasmid, standard methods to replicate additional amounts of DNA in E. coli are highly likely to result in mutations and/or rearrangements. Therefore, OriGene does not guarantee the capability to replicate this plasmid DNA. Additional amounts of DNA can be purchased from OriGene with batch-specific, full-sequence verification at a reduced cost. Please contact our customer care team at custsupport@origene.com or by calling 301.340.3188 option 3 for pricing and delivery.

The molecular sequence of this clone aligns with the gene accession number as a point of reference only. However, individual transcript sequences of the same gene can differ through naturally occurring variations (e.g. polymorphisms), each with its own valid existence. This clone is substantially in agreement with the reference, but a complete review of all prevailing variants is recommended prior to use. [More info](#)

OTI Annotation: This clone was engineered to express the complete ORF with an expression tag. Expression varies depending on the nature of the gene.

Components: The ORF clone is ion-exchange column purified and shipped in a 2D barcoded Matrix tube containing 10ug of transfection-ready, dried plasmid DNA (reconstitute with 100 ul of water).

Reconstitution Method:

1. Centrifuge at 5,000xg for 5min.
2. Carefully open the tube and add 100ul of sterile water to dissolve the DNA.
3. Close the tube and incubate for 10 minutes at room temperature.
4. Briefly vortex the tube and then do a quick spin (less than 5000xg) to concentrate the liquid at the bottom.
5. Store the suspended plasmid at -20°C. The DNA is stable for at least one year from date of shipping when stored at -20°C.

RefSeq: [NM_180991.5](#)

RefSeq Size: 5334 bp

RefSeq ORF: 2175 bp

Locus ID: 353189

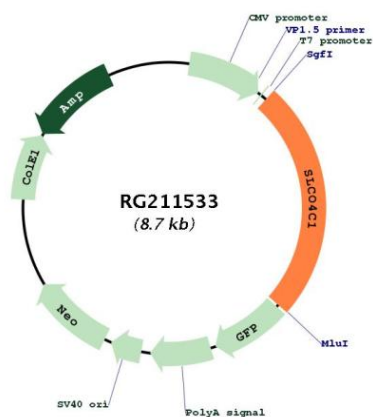
UniProt ID: [Q6ZQN7](#)

Cytogenetics: 5q21.1

Protein Families: Transmembrane

Gene Summary: SLCO4C1 belongs to the organic anion transporter (OATP) family. OATPs are involved in the membrane transport of bile acids, conjugated steroids, thyroid hormone, eicosanoids, peptides, and numerous drugs in many tissues (Mikkaichi et al., 2004 [PubMed 14993604]). [supplied by OMIM, Mar 2008]

Product images:



Circular map for RG211533