

Product datasheet for **RG211522**

DEFB119 (NM_153323) Human Tagged ORF Clone

Product data:

Product Type: Expression Plasmids
Product Name: DEFB119 (NM_153323) Human Tagged ORF Clone
Tag: TurboGFP
Symbol: DEFB119
Synonyms: DEFB-19; DEFB-20; DEFB20; DEFB120; ESC42-RELA; ESC42-RELB
Mammalian Cell Selection: Neomycin
Vector: pCMV6-AC-GFP (PS100010)
E. coli Selection: Ampicillin (100 ug/mL)
ORF Nucleotide Sequence: >RG211522 representing NM_153323
Red=Cloning site Blue=ORF Green=Tags(s)

TTTTGTAATACGACTCACTATAGGGCGCCGGGAATTCGTCGACTGGATCCGGTACCGAGGAGATCTGCC
GCC**CGATCGCC**

ATGAACTTCTTTACCTGTTTCTTGCCATCCTTCTGGCCATAGAAGAACCAGTGATATCAGTAGAGTGTT
GGATGGATGGACTGCCGGTTGTTGTGCAAAGATGGTGAAGACAGCATCATACGCTGCCGAAATCGTAA
ACGGTGTGTTCCTAGTCGTTATTTAACAATCCAACCAGTAACAATTCATGGAATCCTTGGCTGGACC
ACTCCTCAGATGCCACAACAGCTCCAAAATGAAGACAAATATACTAATAGA

ACGCGTACGCGGCCGCTCGAG - GFP Tag - GTTTAA

Protein Sequence: >RG211522 representing NM_153323
Red=Cloning site Green=Tags(s)

MKLLYLFLAILLAIEEPVISVECWMDGHCRLLLCKDGEDSIIRCNRKRCCVPSRYLTIQPVTIHGILGWT
TPQMSTTAPKMKTNITNR

TRTRPLE - GFP Tag - V

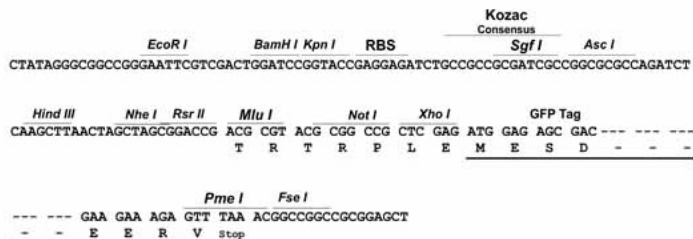
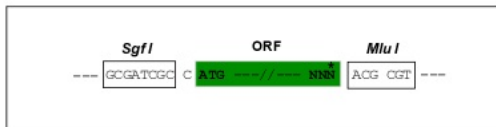
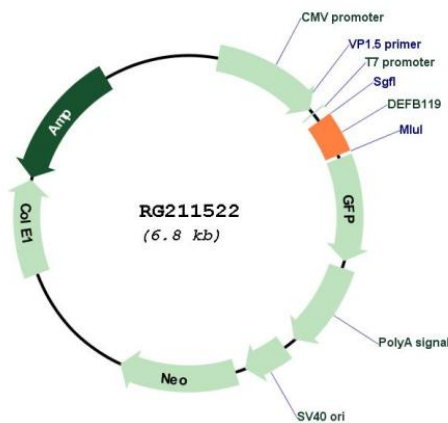
Restriction Sites: SgfI-MluI



[View online »](#)

Cloning Scheme:

Cloning sites used for ORF Shutting:


Plasmid Map:

ACCN: NM_153323

ORF Size: 264 bp

OTI Disclaimer: The molecular sequence of this clone aligns with the gene accession number as a point of reference only. However, individual transcript sequences of the same gene can differ through naturally occurring variations (e.g. polymorphisms), each with its own valid existence. This clone is substantially in agreement with the reference, but a complete review of all prevailing variants is recommended prior to use. [More info](#)

OTI Annotation:	This clone was engineered to express the complete ORF with an expression tag. Expression varies depending on the nature of the gene.
Components:	The ORF clone is ion-exchange column purified and shipped in a 2D barcoded Matrix tube containing 10ug of transfection-ready, dried plasmid DNA (reconstitute with 100 ul of water).
Reconstitution Method:	<ol style="list-style-type: none">1. Centrifuge at 5,000xg for 5min.2. Carefully open the tube and add 100ul of sterile water to dissolve the DNA.3. Close the tube and incubate for 10 minutes at room temperature.4. Briefly vortex the tube and then do a quick spin (less than 5000xg) to concentrate the liquid at the bottom.5. Store the suspended plasmid at -20°C. The DNA is stable for at least one year from date of shipping when stored at -20°C.
RefSeq:	NM_153323.5
RefSeq Size:	513 bp
RefSeq ORF:	267 bp
Locus ID:	245932
UniProt ID:	Q8N690
Cytogenetics:	20q11.21
Protein Families:	Secreted Protein
Gene Summary:	This gene encodes a member of the beta subfamily of defensins. Beta-defensins are antimicrobial peptides that protect tissues and organs from infection by a variety of microorganisms. This gene is found in a cluster with other beta-defensin genes on the long arm of chromosome 20. Multiple transcript variants encoding different isoforms have been found for this gene. [provided by RefSeq, Nov 2014]