

Product datasheet for **RG211494**

ENGASE (NM_001042573) Human Tagged ORF Clone

Product data:

Product Type:	Expression Plasmids
Product Name:	ENGASE (NM_001042573) Human Tagged ORF Clone
Tag:	TurboGFP
Symbol:	ENGASE
Mammalian Cell Selection:	Neomycin
Vector:	pCMV6-AC-GFP (PS100010)
E. coli Selection:	Ampicillin (100 ug/mL)



[View online »](#)

ORF Nucleotide
Sequence:

>RG211494 representing NM_001042573
Red=Cloning site Blue=ORF Green=Tags(s)

TTTTGTAATACGACTCACTATAGGGCGGCCGGGAATTCGTCGACTGGATCCGGTACCGAGGAGATCTGCC
GCCGCGATCGCC

ATGGAGGCCGCGCGGTGACGGTACCCGGTCGGCTACACGGCGCGCGCGGCGGAGCTGCAGGGGCTGG
CGGCCCGGAGGCGGGACGCAGGAGGAGCAGGAGGATCAGGAGCCGCGCCGCGCGGCGGCGGCCGG
AAGGAGCATCAAAGATGAAGAAGAAGACAGTCTTTCGAGAGGTGGTCAAGTTTTCCCGGACCCCTG
CCAGTTAGATATTATGACAAGGACACCACAAACCAATCAGCTTTTACTTGTCTTCGCTGGAGGAGCTCT
TGGCGTGAAGCCCGCTTGGAGGATGGCTTAAATGTGGCCCTGGAGCCCTGGCGTGTCCGACGCCCC
TCTGAGCAGCCAGAGGCCCGGACTTTGTTGTGCATGACATGATGGCGGGTACCTGGATGACAGGTTT
ATTGAGGCTCGGTGGTGCAGACTCCCTATGCTTTCTACCACTGGCAGTGCATCGACGCTTTTGTGACT
TCAGCCACCACACCGTACCATTCCCCAGTGGGCTGGACCAACTGCCACAGGCATGGGGTCTGCGT
GCTGGGGACTTTCATCACGGAGTGAATGAAGGGGAAGGCTCTGTGAAGCCTTCTGGCCGGGATGAG
CGCTCGTACCAGGCAGTGGCTGACCGGCTGGTCCAGATCACTCAGTTTTTTCGTTTTGATGGCTGGCTGA
TCAACATCGAAGTCTGAGTCTGGCCGCTGTGGGGAACATGCCTCCTTTCCTGCGGTACCTCACCAC
ACAGCTGCACCGGAGGTCCCAGGGGCGCTGGTCTCTGGTATGACAGCGTGGTGCAGGAGGGGAGCTC
AAATGGCAAGACGAACTCAACCAGCACAACAGGGTCTTCTTTGATTCTGCGACGGCTTCTTCACTA
ATAACTGGCGGGAGGAGCACTTGGAGCGGATGCTGGGGCAGGCTGGGGAGCGCCGGGCTGATGTGTAC
GGGCGTGGATGTGTTGCTCGAGGGAACGTGGTGGAGGCCGATTCGACACAGACAAGTCGTTGGAGCTG
ATCCGAAAGCATGGCTTCTCCGTGGCTTTGTTTGGCCCGGCTGGGTGTATGAGTGTCTGGAGAAGAAG
CTTGCCTTTCGTACGTCCTTCTGCCTGGGCATGGGTGCACGGAGGGTCTGCTATGGCCAGGAAGAGGCG
GTAGGGCCCTGGTACCACCTGAGCGCCAGGAGATCCAGCCCTTGTGGAGAACACAGGCTGGGAGGGG
ATGGCCGGGGCTGGGTGAGGACGCACTGCTGCCTGGAGGATGCCTGGCACGGAGGAGCTCCCTGCTCGT
CCGGGGTGTGATCCACCGGAGGTTGGAATGTGGCTGTGAGGTTATTTCCCTGCAGGCCCCAGTGCCA
CCCAAGATTTACCTGTCCATGGTGTATAAGCTTGAGGGGCCACGGACGTCACAGTTGCTTTGGAGCTGA
CCACAGGGGATGCCGGCAGCTGCCACATCGGTGGCATCTCAGTGTGAACGCAGAAACAAGCTCAAGACA
CAGCCTCCGACCCTCCGGGTGCCCCCACAAGCTGGCCAGATGGTGGGCCGCTGCGGCCGCGAGCTG
AGTGGGGCTGGGTCCAGCACTGCTACGAGGTGAGCCTGCGTGGGTGCCTGCTGACTAGACCTCCTCGTT
GCTTCTCACGGCCGCGGGTAGTCGGGAGGAGGAGGCTTCACTGTCCGCTTGGAGAGATCCAGGTGGT
GGACGCTGCCAGCCTGCTGGCCCTCTGCCCCAGGTGCAGGCCGTACCATCTCTCACATCCGCTGGCAG
CCATCCGCTCTGAGCGGGAGGGGCCCCCTGCTGCTCCAGCTCAGCTGCACCCCTGCACTGGTCCCTCC
TCCTCTACAAGTCCGTTGCTTCCGAATCCACTGCTGGGAGGGATGAGTGTGACTCTCCGGGAGGGA
GCTGCCGAGGCCAGAGATGCCCATGTTCTGGGGTTGGCTTTTGCACCCAGTACCGGATAGTGGACCTG
CTGGTGAAGCCCGGGCCCGCCAGGATCGTCGCATGGAATTTCTGGTGGAGCCTGTCCCAAGGAAG
GTTCCGGTACCTCAGGCCGAGTGGGGCAGGGCAGTTCTGCTTTATTCAGCCCCTGCA

ACGCGTACGCGGCCGCTCGAG - GFP Tag - GTTTAA

Protein Sequence: >RG211494 representing NM_001042573
 Red=Cloning site Green=Tags(s)

```

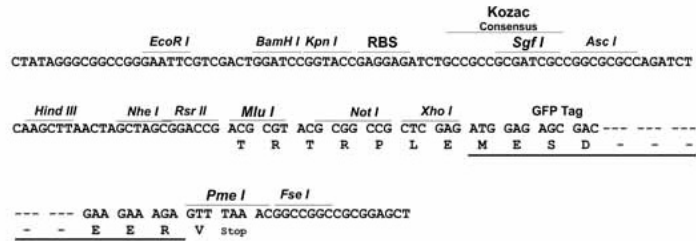
MEAAAVTVTRSATRRRRRQLQGLAAPEAGTQEEQEDQEPRRRRRPGRSIKDEEEETVFREVVFSFDPDL
PVRYDYDKDTPKISFYLSLEELLAWKPRLEDGFNVALEPLACRQPPLSSQRPTLLCHDMMGGYLDDRF
IQGSVVQTPYAFYHWQCIDVFVYFSHHTVTIPPVGWNTNAHRHGVCVLGTFTIEWNEGGRLCEAFLAGDE
RSYQAVADRLVQITQFFRFDGWLINIENSLSLAAVGNMPPFLRYLTTQLHRQVPGGLVLWYDSVVQSGQL
KWQDELNQHNRFVFDSCDGFFTNYNWREHLERMLGQAGERRADYVVGVDVFARGNVVGGRFDTDKSLEL
IRKHGFSVALFAPGWVYECLEKKDFFQNQDKFWGRLERYLPTHSICSLPFVTSFCLGMGARRVCYQEEA
VGPWYHLSAQEIQPLFGEHRLGGDGRGWVTRHCCLEDAWHGGSSLLVRGVIPPEVGNVAVRFLSLQAPVP
PKIYLSMYVKLEGPTDVTVALELTTGDAGSCHIGGISVLNAETSSRHSRLRPLRVPPTKLARWVGRGCRQL
SGGWVQHCYEVSRLRGCLLLDLLVCFSRPPGSREEESFTCRLGEIQVDAASLLAPLQVQAVTISHIRWQ
PSASEREGPPALLQLSCTLHWSFLLSQVRCFRIHCWGGMSDDSPGRELPRPEMPMFLGLAFATQYRIVDL
LVEAAGPGQDRRMEFLVEPVPKEGFRVQA EWGRAVLLYSAPA
  
```

TRTRPLE - GFP Tag - V

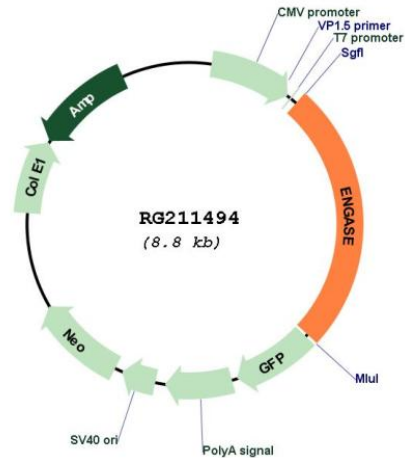
Restriction Sites: SgfI-MluI

Cloning Scheme:

Cloning sites used for ORF Shutting:



Plasmid Map:



ACCN: NM_001042573

ORF Size: 2229 bp

OTI Disclaimer: The molecular sequence of this clone aligns with the gene accession number as a point of reference only. However, individual transcript sequences of the same gene can differ through naturally occurring variations (e.g. polymorphisms), each with its own valid existence. This clone is substantially in agreement with the reference, but a complete review of all prevailing variants is recommended prior to use. [More info](#)

OTI Annotation: This clone was engineered to express the complete ORF with an expression tag. Expression varies depending on the nature of the gene.

Components: The ORF clone is ion-exchange column purified and shipped in a 2D barcoded Matrix tube containing 10ug of transfection-ready, dried plasmid DNA (reconstitute with 100 ul of water).

Reconstitution Method:

1. Centrifuge at 5,000xg for 5min.
2. Carefully open the tube and add 100ul of sterile water to dissolve the DNA.
3. Close the tube and incubate for 10 minutes at room temperature.
4. Briefly vortex the tube and then do a quick spin (less than 5000xg) to concentrate the liquid at the bottom.
5. Store the suspended plasmid at -20°C. The DNA is stable for at least one year from date of shipping when stored at -20°C.

RefSeq: [NM_001042573.3](#)

RefSeq Size: 4490 bp

RefSeq ORF: 2232 bp

Locus ID:	64772
UniProt ID:	Q8NFI3
Cytogenetics:	17q25.3
Protein Pathways:	Other glycan degradation
Gene Summary:	This gene encodes a cytosolic enzyme which catalyzes the hydrolysis of peptides and proteins with mannose modifications to produce free oligosaccharides. [provided by RefSeq, Feb 2012]