

Product datasheet for **RG211486**

EYA4 (NM_004100) Human Tagged ORF Clone

Product data:

Product Type:	Expression Plasmids
Product Name:	EYA4 (NM_004100) Human Tagged ORF Clone
Tag:	TurboGFP
Symbol:	EYA4
Synonyms:	CMD1J; DFNA10
Mammalian Cell Selection:	Neomycin
Vector:	pCMV6-AC-GFP (PS100010)
E. coli Selection:	Ampicillin (100 ug/mL)



[View online »](#)

ORF Nucleotide Sequence:

>RG211486 representing NM_004100
 Red=Cloning site Blue=ORF Green=Tags(s)

TTTTGTAATACGACTCACTATAGGGCGGCCGGAATTCGTCGACTGGATCCGGTACCGAGGAGATCTGCC
 GCC**CGCATCGCC**

ATGGAAGACTCCCAGGATTTAAATGAACAATCAGTAAAGAAAACGTGCACAGAATCAGATGTTTCACAA
 CTCAGAATTCCAGGTCTATGGAAATGCAGGACCTAGCAAGTCTCATACTCTTGTGGAGGTGGTGATAC
 TCCAGGTAGTCCAAACTGGAAAAATCTAATCTCAGCAGCACATCAGTTACTACAATGGGACAGGAGGG
 GAAAAATGACTGTTTTAAACACAGCAGACTGGTTGCTGAGTTGCAACACCCCTCTTCTGCAACAATGT
 CTCTTCTGCAGTCAAAACAGAGCCCTTGAACAGCAGTGAACCACAGCCAGACTGGAGATGGAGCGCT
 TGACACTTTTACTGGGTCAATAATTACAAGTAGTGGCTACAGCCCAGATCAGCACATCAGTATCCCCA
 CAGCTGTATCCTTCCAAGCCCTATCCACACATTCTTTCTACACCAGCAGCTCAAACAATGTCTGCCTATG
 CAGGCCAGACTCAGTATCGGGGATGCAGCAGCCAGCCGTCTACACAGCCTACTCACAGACAGGACAGCC
 CTACAGCTTGCCACTTACGATTTGGGTGTGATGTTGCCAGCCATCAAGACAGAGAGTGGACTTTCCCAA
 ACTCAGTCCCCATTACAGAGTGGCTGCCTCAGTTACAGCCCAGGGTTCTTACCCACAGCCAGGCCAGA
 CACCTTATTCTTACCAAATGCCAGGTTCTAGTTTTGCACCATCATCTACTATTTATGCAAATAATTCACT
 TTCCAATTCACGAATTTCACTGGTTTCAACAACAGGATTATCCATCCTATACAGCCTTTGGCCAAAACAG
 TATGCACAGTATTATTCAGCATCAACGTATGGAGCGTATATGACATCGAATAACACAGCCGATGGCACAC
 CCTCTTCAACCTCTACTTATCAGTTGCAGGAATCTCTCCAGGACTGACTAACCAACCAGGAGAGTTCGA
 TACCATGCAGAGTCCCTCCACACCCATCAAAGATCTTGATGAGAGAACCTGTAGGAGTTCTGGGTCAAAG
 TCCAGAGGAAGAGGCCGGAAAAATAATCCCTCCCCGCCTCTGATAGTACCTGGAGCGTGTGTTGTCT
 GGGATTTGGATGAAACCATCATTGTTTTCACTCACTGCTCACCCGGTCTTATGCACAGAAGTATGGCAA
 GGATCCCCCATGGCTGTAACCCTTGGACTCCGCATGGAAGAAATGATTTTTAATCTTGCTGATACTCAT
 TTGTTTTTAAATGATTTAGAGGAGTGTGATCAAGTTCATATAGATGATGTTTCTCTGATGATAATGGGC
 AGGACTTAAGTACCTACAGTTTTGCAACTGATGGCTTCCATGCAGCTGCAAGTAGTGCAAACCTTTGTTT
 GCCAACAGGTGTAAGAGGAGGGTTGACTGGATGAGGAAGTTGGCTTTTCGTTACAGAAGAGTAAAAGAA
 TTATATAACACCTACAAGAACAACGTTGCAGGACTCCTTGGCCCTGCCAAGAGGGATGCCTGGCTACAGT
 TAAGGGCAGAGATTGAAGGTCTGACAGATTCTGGCTAACAAATGCACTTAAGTCTTTATCAATTATTAG
 CACTAGGAGTAACTGCATAAATGTCTTGGTAACGACAACCTCACTGATCCAGCACTTGCAGAGTTCTA
 CTCTATAGTTTAGGAGGTCTTTCCCATTTGAGAATATTTACAGTGAACCTAAAATAGGAAAAGAAAGTT
 GCTTTGAACGAATAATGCAAAGTTTGGCAGAAAAGTAGTGTATGTTGTAATTGGGGATGGTGTAGAAGA
 AGAACAGGCAGCAAAAAAGCACAAACATGCCCTTCTGGAGGATATCCAGTCACTCAGACCTCTGGCTCTC
 CACCAAGCACTGGAATTAGAGTATTTG

ACGCGTACGCGGCCGCTCGAG - GFP Tag - GTTTAA

Protein Sequence:

>RG211486 representing NM_004100
 Red=Cloning site Green=Tags(s)

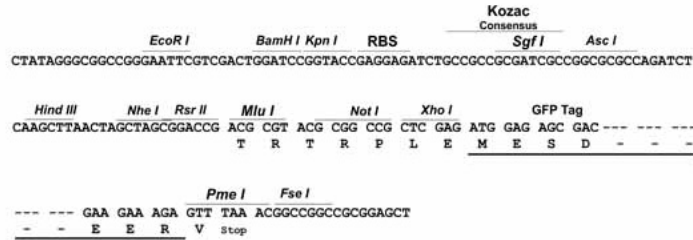
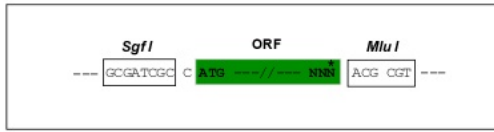
MEDSQDLNEQSVKKTCTESDVSQSQNSRSMEMQDLASPHLTVGGGDTPGSSKLEKSNLSSTSVTTNGTGG
 ENMTVLNTADWLLSCNTPSSATMSLLAVKTEPLNSSETTATTGDGALDTFTGSVITSSGYSPSAHQYSP
 QLYPSKPYPHILSTPAAQTMSAYAGQTQYSGMQQPAVYTAYSQTGQPYSLPTYDLGVMLPAIKTESGLSQ
 TQSPLQSGCLSYSPGFSTPQPGQTPYSYQMPGSSFAPSSTIYANNSVSNSTNFSGSQQDYPYAFGQNG
 YAQYYSASTYGAYMTSNNTADGTPSSTSTYQLQESLPLTNQPGFDTMQSPSTPIKDLBERTCRSSGSK
 SRGRGRKNNPSPPPDSDLERFVWDLDETIIVFHSLLTGSYAQYKGDPPMAVTLGLRMEEMIFNLADTH
 LFFNDLEECDQVHIDDVSSDDNGQDLSTYSFATDGFHAAASSANLCLPTGVRGGVDWMRKLAFRYRRVKE
 LYNTYKNNVAGLLGPAKRDAWLQLRAEIEGLTDSWLTNALKSLSIISTRNINVLVTTTQLIPALAKVL
 LYSLGGAFPIENIYSATKIGKESCFERIMQRFGRKVVVVVIGDGVVEEQAAKHNMPFWRISSHSDDLAL
 HQALELEYL

TRTRPLE - GFP Tag - V

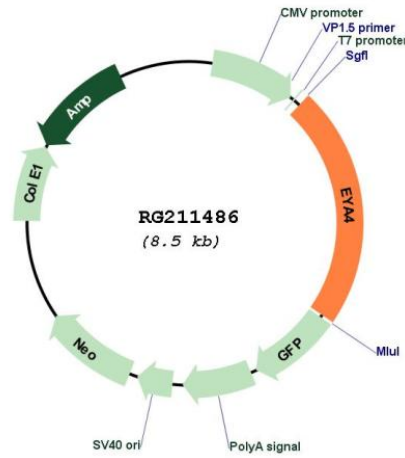
Restriction Sites: SgfI-MluI

Cloning Scheme:

Cloning sites used for ORF Shutting:



Plasmid Map:



ACCN: NM_004100

ORF Size: 1917 bp

OTI Disclaimer:	The molecular sequence of this clone aligns with the gene accession number as a point of reference only. However, individual transcript sequences of the same gene can differ through naturally occurring variations (e.g. polymorphisms), each with its own valid existence. This clone is substantially in agreement with the reference, but a complete review of all prevailing variants is recommended prior to use. More info
OTI Annotation:	This clone was engineered to express the complete ORF with an expression tag. Expression varies depending on the nature of the gene.
Components:	The ORF clone is ion-exchange column purified and shipped in a 2D barcoded Matrix tube containing 10ug of transfection-ready, dried plasmid DNA (reconstitute with 100 ul of water).
Reconstitution Method:	<ol style="list-style-type: none"> 1. Centrifuge at 5,000xg for 5min. 2. Carefully open the tube and add 100ul of sterile water to dissolve the DNA. 3. Close the tube and incubate for 10 minutes at room temperature. 4. Briefly vortex the tube and then do a quick spin (less than 5000xg) to concentrate the liquid at the bottom. 5. Store the suspended plasmid at -20°C. The DNA is stable for at least one year from date of shipping when stored at -20°C.
RefSeq:	NM_004100.2 , NP_004091.2
RefSeq Size:	3077 bp
RefSeq ORF:	1920 bp
Locus ID:	2070
UniProt ID:	O95677
Cytogenetics:	6q23.2
Domains:	Hydrolase
Protein Families:	Druggable Genome, Phosphatase, Transcription Factors
Gene Summary:	This gene encodes a member of the eyes absent (EYA) family of proteins. The encoded protein may act as a transcriptional activator through its protein phosphatase activity, and it may be important for eye development, and for continued function of the mature organ of Corti. Mutations in this gene are associated with postlingual, progressive, autosomal dominant hearing loss at the deafness, autosomal dominant non-syndromic sensorineural 10 locus. The encoded protein is also a putative oncogene that mediates DNA repair, apoptosis, and innate immunity following DNA damage, cellular damage, and viral attack. Defects in this gene are also associated with dilated cardiomyopathy 1J. Alternative splicing results in multiple transcript variants encoding distinct isoforms. [provided by RefSeq, Jul 2014]