

Product datasheet for **RG211484**

NEK4 (NM_003157) Human Tagged ORF Clone

Product data:

Product Type:	Expression Plasmids
Product Name:	NEK4 (NM_003157) Human Tagged ORF Clone
Tag:	TurboGFP
Symbol:	NEK4
Synonyms:	NRK2; pp12301; STK2
Mammalian Cell Selection:	Neomycin
Vector:	pCMV6-AC-GFP (PS100010)
E. coli Selection:	Ampicillin (100 ug/mL)



[View online »](#)

ORF Nucleotide
Sequence:

>RG211484 representing NM_003157
Red=Cloning site Blue=ORF Green=Tags(s)

TTTTGTAATACGACTCACTATAGGGCGGCCGGGAATTCGTCGACTGGATCCGGTACCGAGGAGATCTGCC
GCC**CGCATCGCC**

ATGCCCTGGCCGCTACTGCTACCTGCGGGTCTGTGGCAAGGGGAGCTATGGAGAGGTGACGCTTGTGA
AGCACCGCGGGACGGCAAGCAGTATGTATCAAAAACTGAACCTCCGAAATGCCTCTAGCCGAGAGCG
GCGAGCTGCTGAACAGGAAGCCAGCTCTTGTCTCAGTTGAAGCATCCCAACATTGTCACCTACAAGGAG
TCATGGGAAGGAGGAGATGGTCTGCTCTACATTGTCATGGGCTTCTGTGAAGGAGGTGATTTGTACCGAA
AGCTCAAGGAGCAGAAAGGGCAGCTTCTGCCGAGAATCAGGTGGTAGAGTGGTTGTACAGATCGCCAT
GGCTTTGCAGTATTTACATGAAAAACACATCCTTCATCGAGATCTGAAAACCTCAAATGTCTTCTAACA
AGAACAACATCATCAAAGTAGGGGACCTAGGAATTGCCCGAGTGTGGAGAACCCTGTGACATGGCTA
GCACCCTCATTGGCACACCCTACTACATGAGCCCTGAATTGTTCTCAAACAAACCCTACAATAAGTC
TGATGTTTGGGCTCTAGGATGCTGTGTCTATGAAATGGCCACCTTGAAGCATGCTTCAATGCAAAAAGAT
ATGAATTCCTTTAGTTTATCGGATTATTGAAGGAAAGCTGCCAGCAATGCCAAGAGATTACAGCCAGAGC
TGGCAGAAGTATAAGAAACAATGCTGAGCAAAAGGCTGAAGAAAGGCCGCTGTGTGAGGAGCATCCTGAG
GCAGCCTTATATAAAGCGGCAATCTCCTTCTTTTGGAGGCCACAAAGATAAAAACCTCCAAAAATAAC
ATTAATAATGGTGACTCTCAATCCAAGCCTTTTGTCTACAGTGGTTTCTGGAGAGGCAGAAATCAAATCATG
AAGTAATCCACCCCAACCACTCTTCTGAGGGCTCCAGACATATAAATGGGTGAAGGCAATGTTT
GTCCCAGGAGAAACCCAGGGCTCTGGTCTCTTGAAGTCACTGCCAGTCTGAAAGCCCATACCTGCAAA
CAGGACTTGAGCAATACCACAGAACTAGCCACAATCAGTAGCGTAAATATTGACATCTTACCTGCAAAA
GGAGGGATTGAGTGAAGTGGCTTTGTTCAAGGAGAATCAGCAAGATATTGGATGCCTCTAATGAGT
AGGAGGTATATGCAGATTTTCTCAAGTGAAGAGGAGATGCTGCAGGACAACACTAAATCCAGTGCCAG
CCTGAAAACCTGATCCCATGTGGTCTCTGACATTGTCACTGGGAAAAAGAAATGAACCAGTGAAGCCTC
TGCAGCCCTAATCAAAGAACAAAAGCCAAAGGACCAGAGTCTTGCCTGTGCCCCAAGCTGGAGTGCAG
TGGCACAATCTTGGCTCACAGCAACCTCCGCTCCTGGTTCAAGTATTCTCCAGCCTCAGCCTCCCGA
GTAGCTGGGATTACAGGCGTGTGCCACCACGCCAGGATCAAGTTGCTGGTGAATGTATTATAGAAAAAC
AGGGCAGAAATCCACCCAGATTTACAGCCACACAACCTCTGGGTCTGAACCTTCCCTGTCTCGACAGCGAG
GCAAAAAGAGGAGAGAACAGACTGAGCACAGAGGGGAAAAAGAGACAGGTCCGCAGAGATCTCTTTGCTTTC
CAAGAGTCGCTCCTCGATTTTGCCTTCTCATCCATTGTTGGGAAAGTGGATGTCACATCAACACAAA
AAGAGGCTGAAAACCAACGTAGAGTGGTCACTGGGTCTGTGAGCAGTTCAAGGAGCAGTGAGATGTCATC
ATCAAAGGATCGACCATTATCAGCCAGAGAGAGGAGGCGACTAAAGCAGTCAAGGAAAGAAATGTCTCT
TCAGGCCCTTCAAGTGAAGGAAAGCGTCTCTGAGTGTAGCAGGGCCAGGAAAACCCAGGAAGAAGACCAGC
CCTTGCCTGCCGACGGCTCTCCTCTGACTGCAGCGTCACTCAGGAAAGGAAACAGATTCATTGTCTGTC
TGAGGATGAGTTAAGTCTTCTACAAGTTCAACTGATAAGTCAGATGGGGATTACGGGAAAGGAAAGGT
CAGACAAATGAAATTAATGCCTTGGTACAATTGATGACTCAGACCCTGAAACTGGATTCTAAGAGAGCT
GTGAAGATGTCCCGTAGCAAACCCAGTGTGAGAATCAAACCTCATCGGAAATATCGGGACACACTGAT
ACTTCATGGGAAGTTGCAGAAGAGGCAGAGGAAATCCATTTTAAAGAGCTACCTTCAGCTATTATGCCA
GGTTCTGAAAAGATCAGGAGACTAGTTGAAGTCTTGAGAACTGATGTAATTCGTGGCCTGGGAGTTGAGC
TTTTAGAGCAGGTGATGATCTTTTGGAGGAGGAGGATGAATTTGATAGAGAGGTACGTTTGGGGAGCA
CATGGGTGAAAAGTATACAACCTACAGTGTGAAAGCTCGCCAGTTGAAATTTTTTGAAGAAAACATGAAT
TTT

ACGCGTACGCGGCCGCTCGAG - GFP Tag - GTTTAA

Protein Sequence: >RG211484 representing NM_003157
Red=Cloning site Green=Tags(s)

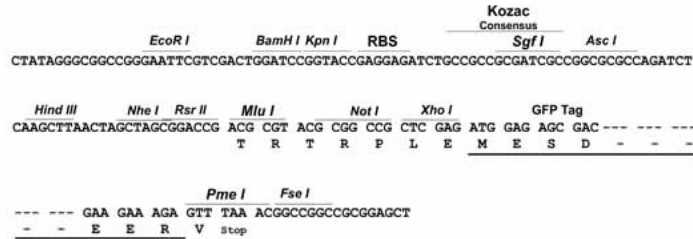
MPLAAYCYLRVVGKGSYGEVTLVKHRRDGKQYVIKKLNLRNASSRERRAAEQEAQLLSQLKHPNIVTYKE
SWEGGDGLLYIVMGFCEGGDLYRKLKEQKQQLLPENQVVEWFVQIAMALQYLHEKHILHRDLKTQNVFLT
RTNIIKVGDLGIARVLENHCDMASTLIGTPYYMSPFLFSNKPYNYKSDVWALGCCVYEMATLKHFNAKD
MNSLVYRIIEGKLPAMPRDYSPELAELIRTMLSKRPEERPSVRSILRQPYIKRQISFFLEATKIKTSKNN
IKNGDSQSKPFATVVSGEAESNHEVIHPQLSSEGSQTYIMGEGKCLSQEKPRASGLLKSPASLKAHTCK
QDLSNTTELATISSVNIDILPAKGRDSVSDGFVQENQPRYLDASNELGGICCSISQVEEMLQDNTKSSAQ
PENLIPMWSSDIVTGEKNEPVKPLQPLIKEQKPKDQSLALSPKLECSGTLAHSNLRLLGSSDSPASASR
VAGITGVCHHAQDQVAGECIEEKQGRIHPDLQPHNSGSEPSLSRQRRQKRREQTEHRGEKRQVRRDLFAF
QESPPRFLPSHPIVGKVDVTSTQKEAENQRRVVTGSVSSRSSEMSSSKDRPLSARERRRLKQSQEEMSS
SGPSVRKASLSVAGPGKQEEDQPLPARRLSSDCSVTQERKQIHCLSEDELSSSTSSTDKSDGDYGEKKG
QTNEINALVQLMTQTLKLDKESCEDVPVANPVSEFKLHRKYRDTLILHGKVAEEAEEIHFKELPSAIMP
GSEKIRRLVEVLRTDVIIRGLGVQLLEQVYDLLEEEDEFDREVRLREHMGEKYTTYSVKARQLKFFENMN
F

TRTRPLE - GFP Tag - V

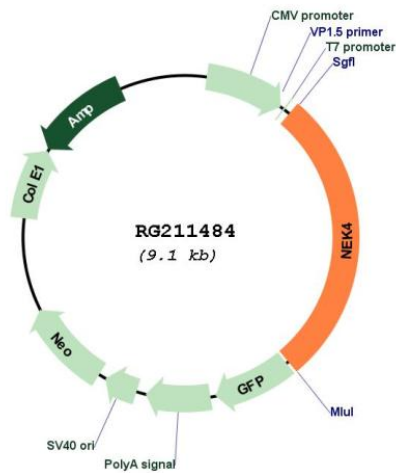
Restriction Sites: Sgfl-MluI

Cloning Scheme:

Cloning sites used for ORF Shutting:



Plasmid Map:



ACCN:	NM_003157
ORF Size:	2523 bp
OTI Disclaimer:	<p>Due to the inherent nature of this plasmid, standard methods to replicate additional amounts of DNA in E. coli are highly likely to result in mutations and/or rearrangements. Therefore, OriGene does not guarantee the capability to replicate this plasmid DNA. Additional amounts of DNA can be purchased from OriGene with batch-specific, full-sequence verification at a reduced cost. Please contact our customer care team at custsupport@origene.com or by calling 301.340.3188 option 3 for pricing and delivery.</p> <p>The molecular sequence of this clone aligns with the gene accession number as a point of reference only. However, individual transcript sequences of the same gene can differ through naturally occurring variations (e.g. polymorphisms), each with its own valid existence. This clone is substantially in agreement with the reference, but a complete review of all prevailing variants is recommended prior to use. More info</p>
OTI Annotation:	This clone was engineered to express the complete ORF with an expression tag. Expression varies depending on the nature of the gene.
Components:	The ORF clone is ion-exchange column purified and shipped in a 2D barcoded Matrix tube containing 10ug of transfection-ready, dried plasmid DNA (reconstitute with 100 ul of water).
Reconstitution Method:	<ol style="list-style-type: none">1. Centrifuge at 5,000xg for 5min.2. Carefully open the tube and add 100ul of sterile water to dissolve the DNA.3. Close the tube and incubate for 10 minutes at room temperature.4. Briefly vortex the tube and then do a quick spin (less than 5000xg) to concentrate the liquid at the bottom.5. Store the suspended plasmid at -20°C. The DNA is stable for at least one year from date of shipping when stored at -20°C.
RefSeq:	NM_003157.2
RefSeq Size:	3698 bp
RefSeq ORF:	2526 bp
Locus ID:	6787
UniProt ID:	A5YM70
Cytogenetics:	3p21.1
Domains:	pkinase, TyrKc, S_TKc
Protein Families:	Druggable Genome, Protein Kinase
Gene Summary:	<p>The protein encoded by this gene is a serine/threonine protein kinase required for normal entry into replicative senescence. The encoded protein also is involved in cell cycle arrest in response to double-stranded DNA damage. Finally, this protein plays a role in maintaining cilium integrity, and defects in this gene have been associated with ciliopathies. [provided by RefSeq, Jan 2017]</p>