

Product datasheet for **RG211430**

CTIP2 (BCL11B) (NM_138576) Human Tagged ORF Clone

Product data:

Product Type:	Expression Plasmids
Product Name:	CTIP2 (BCL11B) (NM_138576) Human Tagged ORF Clone
Tag:	TurboGFP
Symbol:	CTIP2
Synonyms:	ATL1; ATL1-alpha; ATL1-beta; ATL1-delta; ATL1-gamma; CTIP-2; CTIP2; hRIT1-alpha; IDDFSTA; IMD49; RIT1; ZNF856B
Mammalian Cell Selection:	Neomycin
Vector:	pCMV6-AC-GFP (PS100010)
E. coli Selection:	Ampicillin (100 ug/mL)



[View online »](#)

**ORF Nucleotide
Sequence:**

>RG211430 representing NM_138576
 Red=Cloning site Blue=ORF Green=Tags(s)

TTTTGTAATACGACTCACTATAGGGCGGCCGGAATTCGTCGACTGGATCCGGTACCGAGGAGATCTGCC
 GCC**GCGATCGCC**

ATG**TCCCGCCGCAAA**CAGGGCA**ACC**CGCAGCACTTGTCCAGAGGGAGCTCATCACCCAGAGGCTGACC
 ATGTGGAGGCCGCATCCTCGAAGAAGACGAGGGTCTGGAGATAGAGGAGCCAAGTGGCCTGGGGCTGAT
 GGTGGGTGGCCCCGACCCTGACCTGCTCACCTGTGGCCAGTGTCAAATGAACTTCCCTTGGGGGACATC
 CTGGTTTTATAGAGCACAAAAGGAAGCAGTGTGGCGGCAGCTTGGGTGCCTGCTATGACAAGGCCCTGG
 ACAAGGACAGCCCGCCACCCTCCTCAGCTCCGAGCTCAGGAAAGTGTCCGAGCCGGTGGAGATCGGGAT
 CCAAGTACCCCCGACGAAGATGACCACCTGCTCTACCCACGAAAGGCATCTGTCCAAGCAGGAGAAC
 ATTGCAGGGCCGTGCAGGCTGCCAGCTGCCAGCGGTGGCCCCATAGCTGCCTCCTCCACCCTCACT
 CATCCGTGATCACTTACCTCTGCGTGCCTGGGCGCTCTCCCGCCTGCCTCCCCTGCCGTGCTGCAG
 CGCGCGCCGGTCTCGGGT**GACGGGACTCAGGGT**GAGGGT**CAGACGGAGGCTCCCTTTGGAT**GCCAGTGT
 CAGTTGT**CAGGTAAGATGAGCCTTCCAGCTACATTTGCACAACATGCAAGCAGCCCTTCAACAGCGCGT**
 GGTTCTGCTGCAGCACGCGCAGAACACGCACGGCTTCCGCATCTACCTGGAGCCCGGGCCGGCCAGCAG
 CTCGCTCACGCCGCGGCTCACCATCCCGCCCGCTCGGGCCGGAGGCCGTGGCGCAGTCCCCTCATG
 AATTTCTGGGCGACAGCAACCCCTTAACTGCTGCGCATGACGGGCCCATCTGCGGGACCACCCGG
 GCTTGGCGAGGGCCGCTGCCGGGACGCCGCTCTTTCAGTCCCCGCCCGGCCACCACCTGGACCC
 GCACCCCTCAGTGGCGAGGAGATGGGGCTCGTCGCCACGCCAGTGCCTTCGACCGAGTATGCGC
 CTGAACCCATGGCCATCGACTCGCCGCCATGGACTTCTCGCGCGGCTCCGCGAGCTGGCGGGCAACA
 GCTCCACGCGCCGCCCTGTCTCCCGGGCCGGCAACCCATGACACGGCTCCTGAACCCCTTCCAGCC
 CAGCCCCAAGTCCCGTTCTGAGCACGCCGCTGCCGCCATGCCCCCTGGCGGCACGCCGCCCCCG
 CAGCCGCCAGCCAAGAGCAAGTCTGCGAGTTCTGCGGCAAGACCTTCAAGTTCCAGAGCAATCTCATCG
 TGCACCGCGCAGTACACGGGCGAGAAGCCCTACAAGTCCAGCTGTGCGACCACGCGTCTCGCAGGC
 CAGCAAGCTCAAGCGCCACATGAAGACGCACATGCACAAGGCCGGCTCGCTGGCCGGCCGCTCCGACGAC
 GGGCTCTCGGCCCGCAGCTCCCCGAGCCCGCACCGAGCTGGCGGGCGAGGGCCTCAAGCGGGCCG
 ACGGTGACTTCCGCCACCAGAGAGCGACCCGTCGCTGGGCCACGAGCCGAGGAGGAGGACGAGGAGGA
 GGAGGAGGAGGAGGAGGAGTGTACTGGAGAACGAGAGCCGGCCGAGTCCGAGCTTCCAGATGGACTCG
 GAGCTGAGCCGCAACCGGAGAACGGCGTGGTGGGGTCCCGGGGCGGGGGCGGGCGCGG
 CCAAGGCCTGGCTGACGAGAAGGCGCTGGTGTGGGCAAGGTATGGAGAACGTGGGCCTAGGCGCACT
 GCCGAGTACGGCGAGCTCCTGGCCGACAAGCAGAAGCGCGGCGCCTTCTGAAGCGTGGCGGGCGGGC
 GGGGACGCGGGGACGACGACGACGCGGGCGGCTGCGGGGACGCGGGCGCGGGCGCGGCTCAACGGGC
 GCGGGGGCGGCTTCGCGCCAGGCACCGAGCCCTTCCCCGGGCTTCCCGCGCAAGCCCGCGCCGCTGCC
 CAGCCCCGGGCTCAACAGCGCCGCAAGCGCATCAAGTGGAGAAGGACCTGGAGCTGCCGCCCGCCGCG
 CTCATCCCGTCCGAGAACGTGTACTCGCAGTGGCTGGTGGGCTACGCGGCGTCCGGGCACTTCCAGAGG
 ACCCTTCTGGGCTTCCAGGACGACGACAGTCCGCTTCCGACGTCGTCGAGCACTCGTCCGAGAA
 CGGCAGCTGCGCTTCTCCACGCGCCCGGGGACCTGCTGGACGGCGGCTCTCGGGCCGACGGGACAG
 GCCAGCGGAGGACGACCCCGCACCTGGGCGGCCCGGGCCCGGGCGGCCAGCTCAAGGAGGGCCCGC
 GCAGCGACACGTGCGAGTACTGCGGCAAGGTGTTCAAGAAGTGCAGCAACTTACGGTGCACCGCGGGAG
 CCACACCGGCGAGCGGCTTACAAGTGCAGCTGTGCAACTACGCGTGCAGCGAGCAGCAAGCTCACG
 CGCCACATGAAGACGACGGGAGATCGGCAAGGAGGTGTACCGTGCAGCATCTGCCAGATGCCCTTCA
 GCGTCTACAGCACCTGGAGAAACATGAAAAGTGGCACGGCGAGCACTTGTGACTAACGACGTCAA
 AATCGAGCAGGCCGAGAGGAGC

AG**CGGACCG**ACGCGTACGCGGCCGCTCGAG - GFP Tag - GTTAA

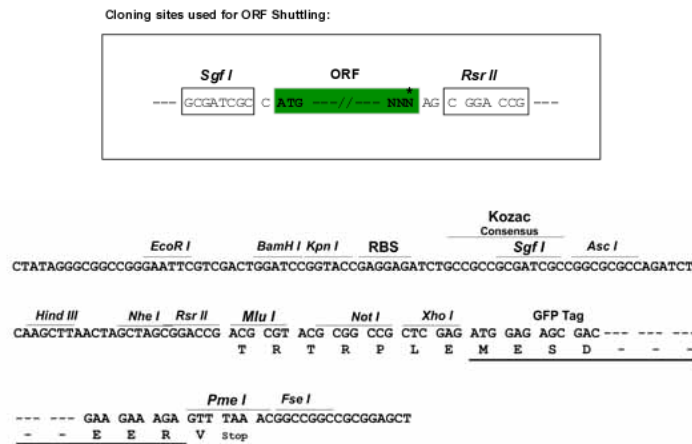
Protein Sequence: >RG211430 representing NM_138576
 Red=Cloning site Green=Tags(s)

MSRRKQGNPQHL SQRELITPEADHVEAAILEEDEGLEIEEPSGLGLMVGGPDPDLLTCGQCQMNFLGDI
 LVFIEHKRKQCGGSLGACYDKALDKDSPPPSSRSELRKVSEPVEIGIQVTPDEDDHLLSPTKGICPKQEN
 IAGPCRPAQLPAVAPIAASSHPHSSVITSPLRALGALPPCLPLCCSARPVSGDGTQEGEQTEAPFGCQC
 QLSGKDEPSSYICTTCKQPFNSAWFLLQHAQNTGHFRIYLEPGPASSLTPRLTIPPLGPEAVAQSPLM
 NFLGDSNPFNLLRMTGPILRDHPGFGEGRLPPTPLFSPPPRHHLDPHRLSAEEMGLVAQHPSAFDRVMR
 LNPMAIDSPAMDFSRRRLRELAGNSSTPPPVSPPGRGNPMHRLLNPFQSPKSPFLSTPPLPMPGGTPTPP
 QPPAKSKSCEFCGKTFKFQSNLIVHRRSHTGEKPYKCQLCDHACSQASKLKRHMKTHMHKAGSLAGRSDD
 GLSAASSPEPGTSELAGEGLKAADGDFRHHESDPSLGHEPEEEEEEEEEELLENESRPSSFMSDS
 ELSRNRENGGGVPGVPGAGGGAALADEKALVLGKVMENVGLGALPQYGELLADKQKRGAFKRAAGG
 GDAGDDDDAGCGDAGAGAVNGRGGGFAPGTEPFPGLFPRKPAPLPSPLNSAAKRIKVEKDLELPAA
 LIPSENVYSQWL VGAAARHFMDPFLGF TDARQSPFAT SSEHSENGSLRFSTPPGDLLDGGLSGRSGT
 ASGGSTPHLGGPGPRPSSKEGRRSDTCEYCGKVFKNCSNLTVHRRSHTGERPYKCELCNYACAQSSKLT
 RHMKTHGQIGKEYVRCDICQMPFSVYSTLEKHMKKWHGEHLLTNDVKIEQAERS

SGPTRRRLE - GFP Tag - V

Restriction Sites: SgfI-RsrII

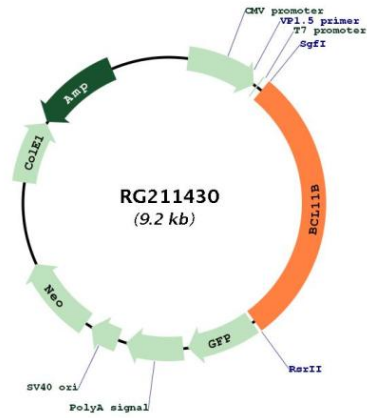
Cloning Scheme:



ACCN: NM_138576

ORF Size:	2682 bp
OTI Disclaimer:	The molecular sequence of this clone aligns with the gene accession number as a point of reference only. However, individual transcript sequences of the same gene can differ through naturally occurring variations (e.g. polymorphisms), each with its own valid existence. This clone is substantially in agreement with the reference, but a complete review of all prevailing variants is recommended prior to use. More info
OTI Annotation:	This clone was engineered to express the complete ORF with an expression tag. Expression varies depending on the nature of the gene.
Components:	The ORF clone is ion-exchange column purified and shipped in a 2D barcoded Matrix tube containing 10ug of transfection-ready, dried plasmid DNA (reconstitute with 100 ul of water).
Reconstitution Method:	<ol style="list-style-type: none">1. Centrifuge at 5,000xg for 5min.2. Carefully open the tube and add 100ul of sterile water to dissolve the DNA.3. Close the tube and incubate for 10 minutes at room temperature.4. Briefly vortex the tube and then do a quick spin (less than 5000xg) to concentrate the liquid at the bottom.5. Store the suspended plasmid at -20°C. The DNA is stable for at least one year from date of shipping when stored at -20°C.
RefSeq:	NM_138576.4
RefSeq Size:	7816 bp
RefSeq ORF:	2685 bp
Locus ID:	64919
UniProt ID:	Q9C0K0
Cytogenetics:	14q32.2
Protein Families:	Druggable Genome
Gene Summary:	This gene encodes a C2H2-type zinc finger protein and is closely related to BCL11A, a gene whose translocation may be associated with B-cell malignancies. Although the specific function of this gene has not been determined, the encoded protein is known to be a transcriptional repressor, and is regulated by the NURD nucleosome remodeling and histone deacetylase complex. Four alternatively spliced transcript variants encoding distinct isoforms have been found for this gene. [provided by RefSeq, Aug 2013]

Product images:



Circular map for RG211430