

## Product datasheet for **RG211418**

### HIP1 (NM\_005338) Human Tagged ORF Clone

#### Product data:

Product Type:	Expression Plasmids
Product Name:	HIP1 (NM_005338) Human Tagged ORF Clone
Tag:	TurboGFP
Symbol:	HIP1
Synonyms:	HIP-I; ILWEQ; SHON; SHONbeta; SHONGgamma
Mammalian Cell Selection:	Neomycin
Vector:	pCMV6-AC-GFP (PS100010)
E. coli Selection:	Ampicillin (100 ug/mL)
ORF Nucleotide Sequence:	>RG211418 representing NM_005338 Red=Cloning site Blue=ORF Green=Tags(s)

TTTTGTAATACGACTCACTATAGGGCGGCCGGAATTCGTCGACTGGATCCGGTACCGAGGAGATCTGCC  
GCC**CGATCGCC**

ATGGATCGGATGGCCAGCTCCATGAAGCAGGTGCCAACCCTGCCCCAAGGTGCTGAGCCGGCGGGG  
TCGGCGCTGGGCTGGAGGCGGGAGCGGAGAGCTTCGAGCGGACTCAGACTGTCAGCATCAATAAGGC  
CATTAAATACGCAGGAAGTGGCTGTAAGGAAAAACACGCCAGAACGTGCATACTGGGCACCCACCATGAG  
AAAGGGGCACAGACCTTCTGGTCTGTTGTCAACCGCTGCCTCTGTCTAGCAACGCAGTGTCTGTGGA  
AGTTCTGCCATGTGTTCCACAACTCCTCCGAGATGGACACCCGAACGTCTGAAGGACTCTCTGAGATA  
CAGAAATGAATTGAGTGACATGAGCAGGATGTGGGGCCACCTGAGCGAGGGGTATGGCCAGCTGTGCAGC  
ATCTACCTGAAACTGCTAAGAACCAAGATGGAGTACCACACCAAAAAATCCCAGGTTCCCAGGCAACCTGC  
AGATGAGTGACCGCCAGCTGGACGAGGCTGGAGAAAGTGACGTGAACAACCTTTTTCCAGTTAACAGTGGA  
GATGTTTGACTACCTGGAGTGTGAACCTCAACTCTTCAAACAGTATTCAACTCCCTGGACATGTCCCGC  
TCTGTGTCGTGACGGCAGCAGGGCAGTGCCGCTCGCCCCGCTGATCCAGGTCACTTGGACTGCAGCC  
ACCTTTATGACTACACTGTCAAGCTTCTCTTCAAACCTCACTCCTGCCTCCCAGCTGACACCCTGCAAGG  
CCACCGGGACCGCTTCAATGGAGCAGTTTACAAAGTTGAAAGATCTGTTCTACCGCTCCAGCAACCTGCAG  
TACTTCAAGCGGCTCATTAGATCCCCAGCTGCCTGAGAACCACCAACTTCTGCGAGCCTCAGCCC  
TGTGAGAACATATCAGCCCTGTGGTGGTATCCCTGCAGAGGCCTCATCCCCGACAGCGAGCCAGTCTT  
AGAGAAGGATGACCTCATGGACATGGATGCCTCTCAGCAGAATTTATTTGACAACAAGTTTGATGACATC  
TTTGCCAGTTCATTGAGCAGTATCCCTTCAATTTCAACAGTCAAAATGGTGTGAACAAGGATGAGAAGG  
ACCACTTAATTGAGCGACTATACAGAGAGATCAGTGGATTGAAGGCACAGCTAGAAAACATGAAGACTGA  
GAGCCAGCGGTTGTGCTGCAGCTGAAGGGCCACGTGAGCGAGCTGGAAGCAGATCTGGCCGAGCAGCAG  
CACCTGCGGCAGCAGGCGGCCGACGACTGTGAATTCCTGCGGGCAGAAGTGGACGAGCTCAGGAGGCAGC  
GGGAGGACACCGAGAAGGCTCAGCGGAGCTGTCTGAGATAGAAAGGAAAGCTCAAGCCAATGAACAGCG  
ATATAGCAAGCTAAAGGAGAAGTACAGCGAGCTGGTTCAGAACCACGCTGACCTGCTCGGAAGAATGCA



[View online »](#)

GAGGTGACCAAACAGGTGTCCATGGCCAGACAAGCCCAGGTAGATTTGGAACGAGAGAAAAAGAGCTGG  
 AGGATTCGTTGGAGCGCATCAGTGACCAGGGCCAGCGGAAGACTCAAGAACAGCTGGAAGTTCTAGAGAG  
 CTTGAAGCAGGAACTTGCCACAAGCCAACGGGAGCTTCAGGTTCTGCAAGGCAGCCTGGAACCTTCTGCC  
 CAGTCAGAAGCAAACCTGGGCAGCCGAGTTCCGCCAGCTAGAGAAGGAGCGGGACAGCCTGGTGAGTGGCG  
 CAGCTCATAGGGAGGAGGAATATCTGCTCTTCGGAAAGAACTGCAGGACACTCAGCTCAAACCTGGCCAG  
 CACAGAGGAATCTATGTGCCAGCTTGCCAAAGACCAACGAAAAATGCTTCTGGTGGGGTCCAGGAAGGCT  
 CGCGAGCAGGTGATACAAGACGCCCTGAACCAGCTTGAAGAACCCTCTCTATCAGCTGGCTGGTCTG  
 CAGATCACCTCCTCCACGGTACATCCATTTCCAGCTGCATCGAGCAACTGGAGAAAAGCTGGAGCCA  
 GTATCTGGCCTGCCAGAACATCAGTGGACTTCTCCATTCCATAAACCTGCTGGCCACTTGACCAGC  
 GACGCCATTGCTCATGGTGCCACCACCTGCCTCAGAGCCCCACCTGAGCCTGCCGACTACTGACCAGG  
 CCTGTAAGCAGTATGGCAGGGAAACCTCGCTACCTGGCCTCCTGGAGGAAGAGGGAAGCCTTGAGAA  
 TGCCGACAGCACAGCCATGAGGAACTGCCTGAGCAAGATCAAGGCCATCGCGGAGGAGCTCTGCCAGG  
 GGACTGGACATCAAGCAGGAGGAGCTGGGGACCTGGTGGACAAGGAGATGGCGGCCACTTCAGTGCTA  
 TTGAAACTGCCACGGCCAGAATAGAGGAGATGCTCAGCAATCCCAGCAGGAGACAGGAGTCAAATT  
 GGAGGTGAATGAAAGGATCCTTGGTTGCTGTACCAGCCTCATGCAAGCTATTCAGGTGCTCATCGTGGCC  
 TCTAAGGACCTCCAGAGAGAGATTGTGGAGAGCGGAGGGGTACAGCATCCCCTAAAGAGTTTTATGCCA  
 AGAACTCTCGATGGACAGAAGGACTTATCTCAGCCTCCAAGGCTGTGGGCTGGGGAGCCACTGTCATGGT  
 GGATGCAGCTGATCTGGTGGTACAAGGCAGAGGGAAATTTGAGGAGCTAATGGTGTGTTCTCATGAAAT  
 GCTGCTAGCACAGCCAGCTTGTGGTGCATCCAAGGTGAAAGCTGATAAGGACAGCCCCAACCTAGCCC  
 AGCTGCAGCAGGCCTCTCGGGGAGTGAACCAGGCCACTGCCGGCCTGTGGCCTCAACCATTTCCGGCAA  
 ATCACAGATCGAAGAGACAGACAACATGGACTTCTCAAGCATGACGCTGACACAGATCAAACGCCAAGAG  
 ATGGATTCTCAGGTTAGGGTGTAGAGCTAGAAAATGAATTGCAGAAGGAGCGTCAAAAAGCTGGGAGAGC  
 TTCGAAAAAGCACTACGAGCTTGTGGTGTGCTGAGGGCTGGGAAGAAGGAACAGAGGCATCTCCACC  
 TACTGCAAGAAGTGGTAACCGAAAAAGAA

ACGCGTACGCGGCCGCTCGAG – GFP Tag – GTTTAA

**Protein Sequence:**

>RG211418 representing NM\_005338  
 Red=Cloning site Green=Tags(s)

MDRMASMKQVPNPLPKVLSRRGVGAGLEAAERESFERTQTVSINKAINTQEAVVKEKHARTCILGTHHE  
 KGAQTFWVSVNRLPLSSNAVLCWKFCVHFHKLRLDGHNVKDSLRYRNELSDMSRMWHLSEGYQLCS  
 IYLLKLLRTKMEYHTKNPRFPGNLQMSDRQLDEAGESDVNFFQLTVEMFDYLECELNLFQTVFNSLDMSR  
 SVSVTAAGQCRLAPLIQVILDCSHLYDYTVKLLFKLHSLPADTLQGHRDRFMEQFTKLKDLFYRSSNLQ  
 YFKRLIQIPQLPENPPNFLRASALSEHISPVVVIPAEASSPDSEPVLEKDDLMDMDASQQNLFDNKFDDI  
 FGSSFSSDPFNFNQNGVKNKDEKDHLEIRLYREISGLKAQLENMKTESQRVVLQLKGVHSELEADLAEQQ  
 HLRQQAADDCEFLRAELDELRRQREDTEKAQRSLSEIERKAQANEQRYSKLKEKYSSELVQNHADLLRKN  
 EVTKQVSMARQAQVDLEREKKELEDSLERSDQQRKTQEQLVLESLKQELATSQRELQVLQGSLETS  
 QSEANWAAEFAELEKERDSLVSAAHREEL.SALRKELQDTQLKLASTEESMCQLAKDQRKMLLVGSRKA  
 AEQVIQDALNQLLEPPLISCAGSADHLLSTVTSISSCIEQLEKSWSYLACPEDISGLLHSITLLAHLTS  
 DAIAHGATTCLRAPPEPADSLTEACKQYGRETAYLASLEEEGSLLENADSTAMRNCLSKIKAIIGEELLPR  
 GLDIKQEELGDLVDKEMAATSAAIETATARIIEMLSKSRAGDTGVKLEVNERILGCCTSLMQAIQVLIVA  
 SKDLQREIVESGRGTASPKIFYAKNSRWTEGLISASKAVGWGATVMVDAADLVVQGRGKFEELMVCSEI  
 AASTAQLVAASKVKADKDSPNLALQQAASRGVNQATAGVVASTISGKSQIEETDNMDFSSMTLTQIKRQE  
 MDSQVRVLELENELQKERQKLGELRKKHYELAGVAEGWEEGTEASPTTLQEVVTEKE

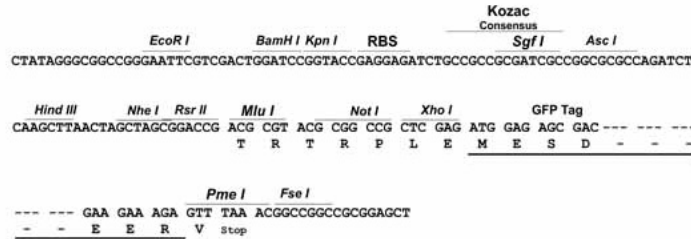
TRTRPLE – GFP Tag – V

**Restriction Sites:**

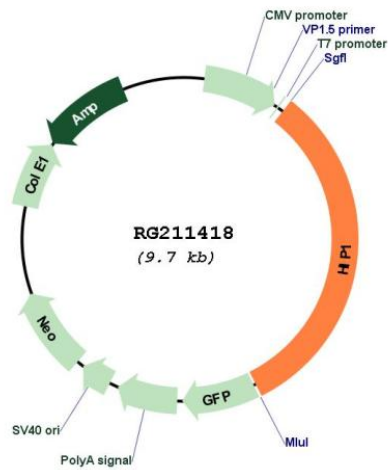
SgfI-MluI

Cloning Scheme:

Cloning sites used for ORF Shutting:



Plasmid Map:



ACCN: NM\_005338

ORF Size: 3111 bp

<b>OTI Disclaimer:</b>	<p>Due to the inherent nature of this plasmid, standard methods to replicate additional amounts of DNA in E. coli are highly likely to result in mutations and/or rearrangements. Therefore, OriGene does not guarantee the capability to replicate this plasmid DNA. Additional amounts of DNA can be purchased from OriGene with batch-specific, full-sequence verification at a reduced cost. Please contact our customer care team at <a href="mailto:custsupport@origene.com">custsupport@origene.com</a> or by calling 301.340.3188 option 3 for pricing and delivery.</p> <p>The molecular sequence of this clone aligns with the gene accession number as a point of reference only. However, individual transcript sequences of the same gene can differ through naturally occurring variations (e.g. polymorphisms), each with its own valid existence. This clone is substantially in agreement with the reference, but a complete review of all prevailing variants is recommended prior to use. <a href="#">More info</a></p>
<b>OTI Annotation:</b>	<p>This clone was engineered to express the complete ORF with an expression tag. Expression varies depending on the nature of the gene.</p>
<b>Components:</b>	<p>The ORF clone is ion-exchange column purified and shipped in a 2D barcoded Matrix tube containing 10ug of transfection-ready, dried plasmid DNA (reconstitute with 100 ul of water).</p>
<b>Reconstitution Method:</b>	<ol style="list-style-type: none"><li>1. Centrifuge at 5,000xg for 5min.</li><li>2. Carefully open the tube and add 100ul of sterile water to dissolve the DNA.</li><li>3. Close the tube and incubate for 10 minutes at room temperature.</li><li>4. Briefly vortex the tube and then do a quick spin (less than 5000xg) to concentrate the liquid at the bottom.</li><li>5. Store the suspended plasmid at -20°C. The DNA is stable for at least one year from date of shipping when stored at -20°C.</li></ol>
<b>RefSeq:</b>	<a href="#">NM_005338.7</a>
<b>RefSeq Size:</b>	8051 bp
<b>RefSeq ORF:</b>	3114 bp
<b>Locus ID:</b>	3092
<b>UniProt ID:</b>	<a href="#">O00291</a>
<b>Cytogenetics:</b>	7q11.23
<b>Domains:</b>	I_LWEQ
<b>Protein Families:</b>	Druggable Genome
<b>Protein Pathways:</b>	Huntington's disease
<b>Gene Summary:</b>	<p>The product of this gene is a membrane-associated protein that functions in clathrin-mediated endocytosis and protein trafficking within the cell. The encoded protein binds to the huntingtin protein in the brain; this interaction is lost in Huntington's disease. Alternative splicing results in multiple transcript variants. [provided by RefSeq, Jul 2013]</p>