

Product datasheet for **RG211417**

OPA1 (NM_130832) Human Tagged ORF Clone

Product data:

Product Type:	Expression Plasmids
Product Name:	OPA1 (NM_130832) Human Tagged ORF Clone
Tag:	TurboGFP
Symbol:	OPA1
Synonyms:	BERHS; largeG; MGM1; MTDPS14; NPG; NTG
Mammalian Cell Selection:	Neomycin
Vector:	pCMV6-AC-GFP (PS100010)
E. coli Selection:	Ampicillin (100 ug/mL)



[View online »](#)

ORF Nucleotide Sequence:

>RG211417 representing NM_130832
 Red=Cloning site Blue=ORF Green=Tags(s)

TTTTGTAATACGACTCACTATAGGGCGGCCGGAATTCGTGACTGGATCCGGTACCGAGGAGATCTGCC
 GCC**CGGATCGCC**

ATGTGGCGACTACGTGCGGCCGCTGTGGCCTGTGAGGTCTGCCAGTCTTTAGTGAACACAGCTCTGGAA
 TAAAAGGAAGTTTACCACTACAAAACTACATCTGGTTTCACGAAGCATTATCATTACATCATCCTAC
 CTTAAAGCTTCAACGACCCCAATTAAGGACATCCTTTCAGCAGTTCTCTCTCTGACAAAACCTTCCTTTA
 CGTAAACTGAAATTCTCTCCAATTAATATGGCTACCAGCCTCGCAGGAATTTTGGCCAGCAAGATTAG
 CTACGAGACTCTTAAACTTCGCTATCTCATACTAGGATCGGCTGTTGGGGTGGCTACACAGCCAAAA
 GACTTTTGATCAGTGGAAAGATATGATACCGGACCTTAGTGAATATAAATGGATTGTGCCTGACATTGTG
 TGGGAAATTGATGAGTATATCGATTTTGGTCACAAATTGGTTAGTGAAGTCATAGGAGCTCTGACCTAC
 TTCTCTGTTAGGTTCTCGGAAGAAACGGCTTTAGAGCAACAGATCGTGGATCTGAAAGTGACAAGCA
 TTTTAGAAAGGTGTCAGACAAAGAGAAAATTGACCAACTTCAGGAAGAATTCTGCACACTCAGTTGAAG
 TATCAGAGAATCTTGAACGATTAGAAAAGGAGAACAAAGAATTGAGAAAATTAGTATTGCAGAAAGATG
 ACAAAGGCATTCATCATAGAAAGCTTAAGAAATCTTTGATTGACATGTATTCTGAAGTCTTGATGTTCT
 CTCTGATTATGATGCCAGTTATAATACGCAAGATCATCTGCCACGGGTTGTTGTGGTTGGAGATCAGAGT
 GCTGGAAGACTAGTGTGTTGGAATGATTGCCAAGCTCGAATATCCCAAGAGGATCTGGGGAGATGA
 TGACACGTTCTCCAGTTAAGGTGACTCTGAGTGAAGGTCTCACCATGTGGCCCTATTTAAAGATAGTTC
 TCGGGAGTTTGATCTTACCAAAGAAGAAGATCTTGAGCATTAAAGACATGAAATAGAAGTTCGAATGAGG
 AAAATGTGAAAGAAGGCTGTACCGTTAGCCCTGAGACCATATCCTTAAATGTAAAAGGCCCTGGACTAC
 AGAGATGGTGTGTTGACTTACCAGGTGTGATTAATACTGTGACATCAGGCATGGCTCTGCACAAA
 GGAAACTATTTTCAGTATCAGCAAAGCTTACATGCAGAATCCTAATGCCATCATCTGTGATTCAAGAT
 GGATCTGTGGATGCTGAACGAGTATTGTTACAGACTTGGTCAGTCAAATGGACCCTCATGGAAGGAGAA
 CCATATTCGTTTTGACCAAAGTAGACCTGGCAGAGAAAAATGTAGCCAGTCCAAGCAGGATTCAGCAGAT
 AATTGAAGGAAAGCTCTCCCAATGAAAGCTTTAGGTTATTTGCTGTTGTAACAGGAAAAGGGAACAGC
 TCTGAAAGCATTGAAGCTATAAGAGAATATGAAGAAGAGTTTTTTCAGAATTCAAAGCTCTAAAGACAA
 GCATGCTAAAGGCACACCAAGTACTACAAGAAATTTAAGCCTTGCAGTATCAGACTGCTTTTGGAAAAT
 GGTACGAGAGTCTGTTGAACAACAGGCTGATAGTTTCAAAGCAACAGTTTTAACCTTGAAGTGAATGG
 AAGAATAACTATCCTCGCTGCGGGAATTGACCGGAATGAACTATTTGAAAAGCTAAAAATGAAATCC
 TTGATGAAGTTATCAGTCTGAGCCAGGTTACACCAAAACATTGGGAGGAAATCCTTCAACAATCTTTGTG
 GGAAAGAGTATCAACTCATGTGATTGAAAACATCTACCTTCCAGCTGCGCAGACCATGAATTCAGGAACT
 TTTAACACCACAGTGGATATCAAGCTTAAACAGTGGACTGATAAACAACCTTCTAATAAAGCAGTAGAGG
 TTGCTTGGGAGACCCTACAAGAAGAATTTCCCGCTTTATGACAGAACCAGGAAAGGAAAGAGCATGATGA
 CATATTTGATAAACTTAAAGAGGCTGTTAAGGAAGAAAGTATTAACGACACAAGTGAATGACTTTGCG
 GAGGACAGCTTGAGGTTATTCAACACAATGCTTTGGAAGACCGATCCATATCTGATAAACAGCAATGGG
 ATGCAGCTATTTATTTATGGAAGAGGCTCTGCAGGCTCGTCTCAAGGATGACTGAAAATGCAATTTGAAA
 CATGGTGGTCCAGACTGGAAAAAGAGGTGGTTAATACTGGAAGAATCGGACCCAAGAACAGTGTGTTTAC
 AATGAAAACCAAGAATGAATTGGAGAAGATGTTGAAATGTAATGAGGAGCACCCAGCTTATCTTGCAAGTG
 ATGAAATAACCACAGTCCGGAAGAACCTTGAATCCCGAGGAGTAGAAGTAGATCCAAGCTTGATTAAAGGA
 TACTTGGCATCAAGTTTATAGAAGACATTTTTTAAAAACAGCTCTAAACCATTGTAACCTTTGTGCAAGA
 GGTTTTTATTACTACAAAGGCATTTTGTAGATTCTGAGTTGGAATGCAATGATGTGGTCTGTTTTGGC
 GTATACAGCGCATGCTTGTATCACCGCAAACTTTAAGGCAACAACCTTACAAACTGAAAGTTAGGCG
 ATTAGAGAAAAATGTTAAAGAGGATTGGAAGATTTTGTGAAGATGGTGAAGAAGATTAATTTGCTT
 ACTGGTAAACGCTTCAACTGGCGGAAGACCTCAAGAAAGTTAGAGAAAATCAAGAAAAACTTGATGCTT
 TCATTGAAGCTTTCATCAGGAGAAA

AG**CGGACCG**ACGCGTACGCGGCCGCTCGAG - GFP Tag - GTTTAA

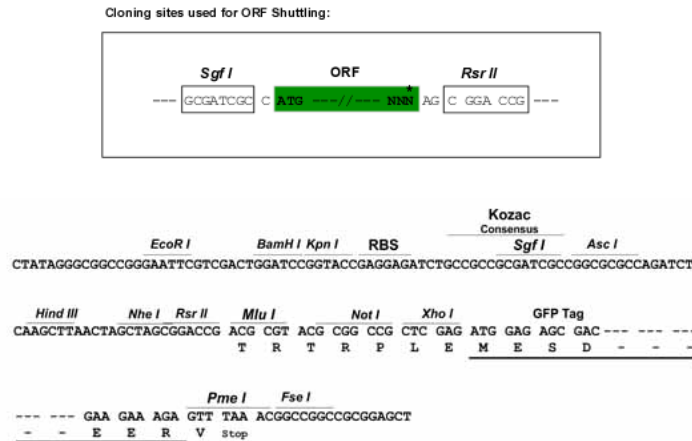
Protein Sequence: >RG211417 representing NM_130832
 Red=Cloning site Green=Tags(s)

MWRLRRAAVACEVCQSLVKHSSGIKGSPLQLKHLVSRSIYHSHHPTLKLQRPQLRTSFQQFSSLTNLPL
 RKLKFSPIKYGYQPRRNFWPARLATRLLKLRYLILGSAVGGGYTAKKTFDQWDMIPDLSEYKWIVPDIV
 WEIDEYIDFGHKLVEVIGASDLLLLLSPEETAFRATDRGSESDKHFRKVS DKEIDQLQEELLHTQLK
 YQRILERLEKENKELRKLVLQKDDKGIHHRKLLKSLIDMYSEVLDVLSDYDASYNTQDHLPRVVVVDQS
 AGKTSVLEMI AQARIFPRGSGEMMTRSPVKVTLSEPHHVALFKDSSREFDLTKEEDLAALRHEIELRMR
 KNVKEGCTVSPETISLNVKGPGLQRMVLDLPGVINTVTSGMADTKETIFSIKAYMQNPNAIILCIQD
 GSVDAERSIVTDLVSQMDPHGRRTIFVLTKVDLAEKNVASPSRIQQIIEGKLFPMKALGYFAVVTGKNS
 SESIEAIREYEEFFQNSKLLKTSMLKAHQVTRNL SLAVSDCFWKMVRESVEQQADSFKATRFNLETW
 KNNYPRLRELDRELFEKAKNEILDEVISLSQVTPKHWEELQQSLWERVSTHVIENIYLPAAQTMNSGT
 FNTTVDIKLKQWTDKQLPNKAVEVAWETLQEEFSRFMTEPKGKEHDDIFDKLKEAVKEESIKRHKWDF
 EDLSRVIQHNALEDRSISDKQQWDAAIYFMEELQARLKDTENAIENMVGPDWKKRWLYWKNRTQEQC
 VHNETKNELEKMLKCNEEHPAYLASDEITTVRKNLESRGVEVDP SLIKDTHWQVYRRHFLKLTALNHC
 NL CRRGFYYYQRHFVDSLELCNDVFLFWRIQRMLAITANTLRQQLTNTEVRRLEKNVKEVLEDF
 AEDGEEKIKLLTGKRVQLAEDLKKVREIQEKLDAFIEALHQEK

SGPTRRRLE - GFP Tag - V

Restriction Sites: SgfI-RsrII

Cloning Scheme:

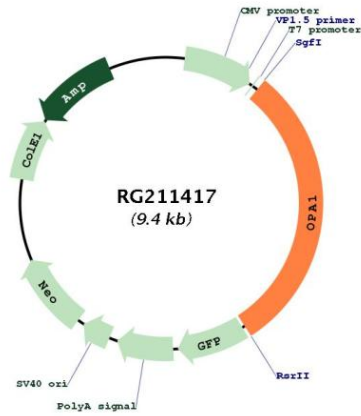


ACCN: NM_130832

ORF Size: 2826 bp

OTI Disclaimer:	<p>Due to the inherent nature of this plasmid, standard methods to replicate additional amounts of DNA in E. coli are highly likely to result in mutations and/or rearrangements. Therefore, OriGene does not guarantee the capability to replicate this plasmid DNA. Additional amounts of DNA can be purchased from OriGene with batch-specific, full-sequence verification at a reduced cost. Please contact our customer care team at custsupport@origene.com or by calling 301.340.3188 option 3 for pricing and delivery.</p> <p>The molecular sequence of this clone aligns with the gene accession number as a point of reference only. However, individual transcript sequences of the same gene can differ through naturally occurring variations (e.g. polymorphisms), each with its own valid existence. This clone is substantially in agreement with the reference, but a complete review of all prevailing variants is recommended prior to use. More info</p>
OTI Annotation:	This clone was engineered to express the complete ORF with an expression tag. Expression varies depending on the nature of the gene.
Components:	The ORF clone is ion-exchange column purified and shipped in a 2D barcoded Matrix tube containing 10ug of transfection-ready, dried plasmid DNA (reconstitute with 100 ul of water).
Reconstitution Method:	<ol style="list-style-type: none"> 1. Centrifuge at 5,000xg for 5min. 2. Carefully open the tube and add 100ul of sterile water to dissolve the DNA. 3. Close the tube and incubate for 10 minutes at room temperature. 4. Briefly vortex the tube and then do a quick spin (less than 5000xg) to concentrate the liquid at the bottom. 5. Store the suspended plasmid at -20°C. The DNA is stable for at least one year from date of shipping when stored at -20°C.
RefSeq:	NM_130832.3
RefSeq Size:	6291 bp
RefSeq ORF:	2829 bp
Locus ID:	4976
Cytogenetics:	3q29
Gene Summary:	The protein encoded by this gene is a nuclear-encoded mitochondrial protein with similarity to dynamin-related GTPases. The encoded protein localizes to the inner mitochondrial membrane and helps regulate mitochondrial stability and energy output. This protein also sequesters cytochrome c. Mutations in this gene have been associated with optic atrophy type 1, which is a dominantly inherited optic neuropathy resulting in progressive loss of visual acuity, leading in many cases to legal blindness. [provided by RefSeq, Aug 2017]

Product images:



Circular map for RG211417