

Product datasheet for **RG211396**

PLXNC1 (NM_005761) Human Tagged ORF Clone

Product data:

Product Type:	Expression Plasmids
Product Name:	PLXNC1 (NM_005761) Human Tagged ORF Clone
Tag:	TurboGFP
Symbol:	PLXNC1
Synonyms:	CD232; PLXN-C1; VESPR
Mammalian Cell Selection:	Neomycin
Vector:	pCMV6-AC-GFP (PS100010)
E. coli Selection:	Ampicillin (100 ug/mL)
ORF Nucleotide Sequence:	>RG211396 representing NM_005761 Red=Cloning site Blue=ORF Green=Tags(s)

TTTTGTAATACGACTCACTATAGGGCGGCCGGGAATTCGTCGACTGGATCCGGTACCGAGGAGATCTGCC
GCC**CGATCGCC**

ATGGAGGTCTCCCGAGGAAGGCGCCGCGCCCGCGCCCCCGCGCCCCGAGCGCCACTGCCCTGCTCGCCT
ATCTGCTGGCACTGGCGGCTCCCGCGGGGCGCGGACGAGCCCGTGTGGCGGTGGAGCAAGCCATCGG
AGCCATCGCGGAGCCAGGAGGACGGCGTGTGGGCGAGCGGACGCTGCCTGGACCAGCTGGACTAC
AGCCTGGAGCACAGCCTCTCGCGCTGTACCGGACCAAGCGGGCAACTGCACAGAGCCGGTCTCGCTGG
CGCCCCCGCGCGCCCCGGCCGGGAGCAGCTTCAGCAAGCTGCTGCTGCCCTACCGCGAGGGGGCGGC
CGGCTCGGGGGGCTGCTGCTACCGGCTGGACCTTCGACCGGGGCGCCTGCGAGGTGCGGCCCTGGGC
AACCTGAGCCGCAACTCCCTGCGCAACGGCACCGAGGTGGTGTGCGTCCACCCGAGGGCTCGACGGCCG
GCGTGGTGTACCGCGCGGGCCGGAACAACCGCTGGTACCTGGCGGTGGCCGCCACCTACGTGCTGCCTGA
GCCGGAGACGGCGAGCCGCTGCAACCCCGCGGCATCCGACCACGACAGGCCATCGCGCTCAAGGACAG
GAGGGGCGCAGCCTGGCCACGCAGGAGCTGGGGCGCCTCAAGCTGTGCGAGGGCGCGGGCAGCCTGCACT
TCGTGGACGCCTTCTCTGGAACGGCAGCATCTACTTCCCCTACTACCCCTACAATAACGAGCGGCGC
TGCCACCGGCTGGCCAGCATGGCGGCATCGCGCAGAGCAGGAGGTGCTGTCCAGGGCCAGGCATCC
CTCGACTGCGGCCACGGCCACCCGACGGCCCGCGCTGCTCCTCTCCAGCCTAGTGGAGGCCCTGG
ACGTCTGGGCGGGAGTGTTGAGCGCGCCGCTGGAGAGGGCCAGGAGCGGCGCTCCCCACCCAGCGGC
GCTCTGCCTTTTCAAGTGAAGTGAAGTCCAGGCGCGCCAAAGAGGGTCACTGGGACTTCAAGACGGCC
GAGAGCCACTGCAAGAAGGGGATCAACCTGAAAGAGTCCAACCAATCGCATCATCTACCTTGATCCATT
CCGACCTGACATCCGTTTATGGCACCGTGGTAATGAACAGGACTGTTTTATTCTTGGGACTGGAGATGG
CCAGTTACTTAAGGTTATTCTTGGTGAAGATTTGACTTCAAATTGTCCAGAGGTTATCTATGAAATTA
GAAGAGACACCTGTTTTCTACAACTCGTTCCTGATCCTGTGAAGAATATCTACATTTATCTAACAGCTG
GGAAAGAGGTGAGGAGAATTCGTGTTGCAAACTGCAATAAACATAAATCCTGTTCCGAGTGTAAACAGC
CACAGACCCTCACTGCGGTTGGTGCCATTGCTACAAAGGTGCACCTTTCAAGGAGATTGTGATCATCA



[View online >](#)

GAGAACTTAGAAAAGCTGGCTGGATATTTTCGTCTGGAGCAAAAAAGTGCCTAAAATTCAGATAATTCGAA
GCAGTAAAGAAAAGACTACAGTGACTATGGTGGGAAGCTTCTCTCCAAGACACTCAAAGTGCATGGTGAA
GAATGTGGACTCTAGCAGGGAGCTTGCCAGAATAAAAGTCAGCCCAACCGGACCTGCACCTGTAGCATC
CCAACCAGAGCAACCTACAAAGATGTTTCAGTTGTCAACGTGATGTTCTCCTTCGGTTCTTGGAAATTTAT
CAGACAGATTCACTTTACCAACTGCTCATCATTAAAAGAATGCCAGCATGCGTAGAAAAGTGGCTGCGC
GTGGTGTAAAAGTGCAAGAAGGTGATCCACCCCTTACAGCTTTCGACCTTCTGATTATGAGAGAAAC
CAGGAACAGTGTCCAGTGGCTGCGAGAAGACATCAGGAGGAGGAAGACCCAAGGAGAACAAGGGGAACA
GAACCAACCAGGCTTACAGGTCTTCTACATTAAGTCCATTGAGCCACAGAAAAGTATCGACATTAGGGAA
AAGCAACGTGATAGTAACGGGAGCAAACCTTACCGGGCATCGAACATCACAATGATCCTGAAAAGGAACC
AGTACCTGTGATAAGGATGTGATACAGGTTAGCCATGTGCTAAATGACACCCACATGAAATTTCTCTCTTC
CATCAAGCCGAAAGAAATGAAGGATGTGTGATCCAGTTTGTGGTGGGAACTGCTCTTCTGTGGGATC
CTTATCTACATTGCTCTGCCACATTGTTCCCTTATATTTCTGCTACCACCTGGATCAGTGGTGGTCAA
AATATAACCATGATGGGCAGAAATTTGATGTAATTGACAACCTAATCATTTACATGAATTAAGGAA
ACATAAATGTCTCTGAATATTGTGTGGCGACTTACTGCGGGTTTTAGCCCCAGTTAAAGAGTTCAAA
AGTGCGCACGAATGCTACTGTGAAGCTGAGAGTACAAGACACCTACTTGGATTGTGGAACCTGCAGTAT
CGGGAGGACCCAGATTCACGGGTATCCGGTGAATCCGAGGTGGACACAGAAGTGAAGTGAATAATC
AAAAAGAAAATGACAACCTCAATATTTCCAAAAAGACATTGAAATTAATCTCTTCCATGGGAAAAATGG
GCAATTAATTCAGTTTTGAAAATATTACTAGAAATCAAGATCTTACCACCATCCTTTGCAAAATTAAG
GGCATCAAGACTGCAAGCACCATTGCCAATCTTCTAAGAAAGTTCGGGTCAAGCTGGGAAACCTGGAGC
TCTACGTGAGCAGGAGTCAAGTCTTCCACATGGTATTTTCTGATTGTGCTCCCTGTCTTGTAGTGAT
TGTCATTTTTGCGGCCGTGGGGTGACCAGGCACAAATCGAAGGAGCTGAGTCGAAACAGAGTCAACAA
CTAGAATTGCTGGAAAGCAGCTCCGAAAGAGATACGTGACGGCTTGTGAGCTGCAGATGGATAAAT
TGGATGTGGTTGATAGTTTTGGAACGTTCCTTCCCTTCTGACTACAAACATTTTGTCTGAGAATTTCTT
CCCTGAGTCAGGTGGCTTACCCACATCTTCACTGAAGATATGCATAACAGAGACGCAACGACAAGAAT
GAAAGTCTCACAGCTTTGGATGCCCTAATCTGTAATAAAAGCTTTCTTGTACTGTCATCCACACCTTG
AAAAGCAGAAGAATTTCTGTGAAGGACAGGTGTCTGTTTGCCTCCTTCTAACCATTGCACTGCAAAAC
CAAGCTGGTCTACCTGACCAGCATCCTAGAGGTGCTGACCAGGGACTTGATGGAACAGTGTAGTAACATG
CAGCCGAAACTCATGCTGAGACGCACGGAGTCCGTGTCGAAAAACTCCTCACAACTGGATGTCGGTCT
GCCTTTCTGGATTTCTCCGGGAGACTGTCGAGAGCCCTTCTATTTGCTGGTACGACTCTGAACCAGAA
AATTAACAAGGGTCCCGTGGATGTAATCACTTGCAAAGCCCTGTACACACTTAATGAAGACTGGCTGTTG
TGGCAGGTTCCGGAATTCAGTACTGTGGCATTAAACGTGCTCTTTGAAAAATCCCGGAAAACGAGAGTG
CAGATGCTGTCCGAATATTTCACTCAATGTTCTCGACTGTGACACCATTGGCCAAGCCAAGAAAAGAT
TTTCCAAGCATTCTTAAGCAAAAATGGCTCCTTATGGACTTCAGCTTAATGAAATTGGTCTTGAGCTT
CAATGGGCACACGACAGAAAGAATCTTGGACATCGACAGTTCCCTCCGTGATTCTTGAAGATGGAATCA
CCAAGCTAAACACCATTGGCCACTATGAGATATCAAAATGGATCCACTATAAAAAGTCTTTAAGAAGATAGC
AAATTTTACTTCAGATGTGGAGTACTCGGATGACCAGTCCATTTGATTTTACCAGATTCGGAAGCATT
CAAGATGTGCAAGGAAAGAGACATCGAGGGAAGCACAAGTTCAAAGTAAAAGAAATGTATCTGACAAAGC
TGCTGTGACCAAGGTGGCAATTCATTTCTGTGCTTGA AAAACTTTTTAGAAAGCATTGGAGTTTACCCAA
CAGCAGAGCTCCATTTGCTATAAAAATCTTTTTGACTTTTTGGACGCCAGGCTGAAAACAAAAAATC
ACAGATCCTGACGTGACATATTTGAAAACAACAGCCTTCCCTTTCGCTTCTGGGTAACATCCTGA
AGAACCCTCAGTTTGTCTTTGACATTAAGAAGACACCACATATAGACGGCTGTTTGTGAGTATTGCCCA
GGCATTATGGATGCATTTTCTCTCACAGAGCAGCAACTAGGGAAGGAAGCACCACCTAATAAGCTTCTC
TATGCCAAGGATATCCCAACCTACAAAGAAGAAGTAAAAATCTTATTACAAAGCAATCAGGGATTTGCCTC
CATTGTGATCCTCAGAAATGGAAGAATTTTAACTCAGGAATCTAAGAAACATGAAAATGAATTTAATGA
AGAAGTGGCTTACAGAAATTTACAAATACATCGTAAAAATTTTGTGAGATTCTAAATAAAGTAAAGAA
AGAGAACGAGGGCTGGAAGAAGCTCAGAAACAACCTTGCATGTAAGTCTTATTTGATGAAAAGAAGA
AATGCAAGTGGATG

ACGCGTACGCGGCCGCTCGAG - GFP Tag - GTTTAA

Protein Sequence: >RG211396 representing NM_005761
 Red=Cloning site Green=Tags(s)

```

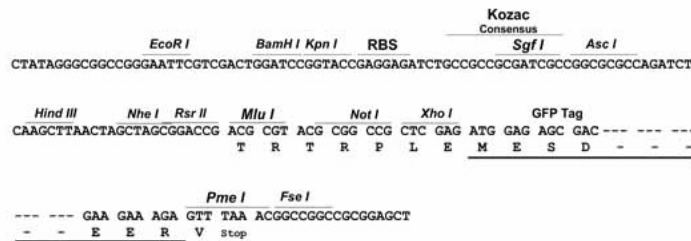
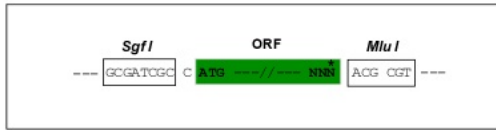
MEVSRRKAPRPPRPAAPLPLLAYLLAALAPGRGADEPVWRSEQAIGAI AASQEDGVFVASGSCLDQLDY
SLEHSL SRLYRDQAGNCTEPVSLAPPARPRPGSSFKLLLLPYREGAAGLGLLLLTGWTFDRGACEVRPLG
NLSRNSLRNGTEVVSCHPQGSTAGVVYRAGRNNRWYLAVAATYVLPETASRCNPAASDHDTAIALKDT
EGRSLATQELGRLLKCEGAGSLHFVDAFLWNGSIYFPYYPYNYTSGAATGWPSMARIAQSTEVLFQGGQAS
LDCGHGHPDGRLLLLSSSLVEALDVWAGVFSAAAGEGQERRSPTTALCLFRMSEIQARAKRVSWDFKTA
ESHCKEGDQPERVQPIASSTLIHSDLTSVYGTVMNRTVFLFGTGDGQLLKVILGENLTSNCEVIYEIK
EETPVFYKLVDPDPVKNIYIYLTAGKEVRRIRVANCNKHKSCSECLTATDPHCGWCHSLQRCTFQGDVHS
ENLENWLDISSGAKKCPKIQIIRSSKEKTTVTMVGFSRPHSKCMVKNVDSRELQNKSQPNRTCTCSI
PTRATYKDVSVVVMFSGSWNLSDRFNFTNCSSLKECPACVETGCAWCKSARRCIHPFTACDPSDYERN
QEQCPVAVEKTSGGGRPKENKGNRTNQALQVFYIKSIEPQKVSTLGSNNVITGANFTRASNITMILKGT
STCDKDVIVQSHVLNDTHMKFSLPSSRKEMKDVCIQFDGGNCSSVGSLSYIALPHCSLIFPATTWISGGQ
NITMMGRNFDVIDNLIISHELKGNINVSEYCVATYCGFLAPSLKSSKVRTNVTVKLRVQDQTYLDCGTLQY
REDPRFTGYRVESEVDTELEVKIQKENDNFNISKDIEITL FHGENGQLNCSFENITRNQDLTTILCKIK
GIKTASTIANSSKVRVKLGNLELYVEQESVPSTWYFLIVLPVLLVIVIFAAGVTRHKSKELSRKQSQQ
LELLESELRKEIRDGFAELQMDKLDVVDSFGTVPFLLDYKHFALRTFFPESGGFTHFITEDMHNDRANDKN
ESLTALDALICNKSFLVTVIHTLEKQKNFSVKDRCLFASFLTIALQTKLVYLSILEVLTRDLMEQCSNM
QPKLMLRRTESVVEKLLTNWMSVCLSGFLRETVEGPFYLLVTTLNQKINKGPVDVITCKALYTLNEDWLL
WQVPEFSTVALNVVFEKIPENESADVCRNISVNVLDCTIGQAKEKIFQAFLSKNGSPYGLQLNEIGLEL
QMGRQKELLDDIDSSVILEDGITKLNITGHYIISNGSTIKVFKKIANFTSDVEYSDDHCHLILPDSEAF
QDVQGRHRGKHKFKVKEMYLTKLLSTKVAIHSVLEKLFRSIWSLPNSRAPFAIKYFFDFDLDAQENKKI
TDPDVVHIWKTNLSPLRFWVNILKNPQVFVDIKKTPHIDGCLSVIAQAFMDAFSLTEQQLGKEAPTNKLL
YAKDIPTYKEEVKSYKAIKRDLPPLSSSEMEEFLLTQESKKHENEFFNEEVALTEIYKYIVKYFDEILNKL
RERGLEEAQKQLLHVKVLDFDEKKKCKWM
  
```

TRTRPLE - GFP Tag - V

Restriction Sites: SgfI-MluI

Cloning Scheme:

Cloning sites used for ORF Shuttling:

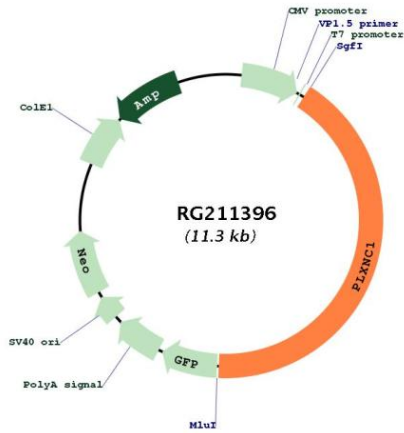


ACCN: NM_005761

ORF Size: 4704 bp

OTI Disclaimer:	The molecular sequence of this clone aligns with the gene accession number as a point of reference only. However, individual transcript sequences of the same gene can differ through naturally occurring variations (e.g. polymorphisms), each with its own valid existence. This clone is substantially in agreement with the reference, but a complete review of all prevailing variants is recommended prior to use. More info
OTI Annotation:	This clone was engineered to express the complete ORF with an expression tag. Expression varies depending on the nature of the gene.
Components:	The ORF clone is ion-exchange column purified and shipped in a 2D barcoded Matrix tube containing 10ug of transfection-ready, dried plasmid DNA (reconstitute with 100 ul of water).
Reconstitution Method:	<ol style="list-style-type: none">1. Centrifuge at 5,000xg for 5min.2. Carefully open the tube and add 100ul of sterile water to dissolve the DNA.3. Close the tube and incubate for 10 minutes at room temperature.4. Briefly vortex the tube and then do a quick spin (less than 5000xg) to concentrate the liquid at the bottom.5. Store the suspended plasmid at -20°C. The DNA is stable for at least one year from date of shipping when stored at -20°C.
RefSeq:	NM_005761.1 , NP_005752.1
RefSeq Size:	5121 bp
RefSeq ORF:	4707 bp
Locus ID:	10154
UniProt ID:	O60486
Cytogenetics:	12q22
Domains:	Sema, PSI, IPT, PSI
Protein Families:	Druggable Genome, Transmembrane
Protein Pathways:	Axon guidance
Gene Summary:	This gene encodes a member of the plexin family. Plexins are transmembrane receptors for semaphorins, a large family of proteins that regulate axon guidance, cell motility and migration, and the immune response. The encoded protein and its ligand regulate melanocyte adhesion, and viral semaphorins may modulate the immune response by binding to this receptor. The encoded protein may be a tumor suppressor protein for melanoma. Alternatively spliced transcript variants have been observed for this gene. [provided by RefSeq, Jan 2011]

Product images:



Circular map for RG211396