

Product datasheet for **RG211356**

OR1L6 (NM_001004453) Human Tagged ORF Clone

Product data:

Product Type: Expression Plasmids
Product Name: OR1L6 (NM_001004453) Human Tagged ORF Clone
Tag: TurboGFP
Symbol: OR1L6
Synonyms: HG16; OR1K1; OR1L7; OR9-30
Mammalian Cell Selection: Neomycin
Vector: pCMV6-AC-GFP (PS100010)
E. coli Selection: Ampicillin (100 ug/mL)
ORF Nucleotide Sequence: >RG211356 representing NM_001004453
Red=Cloning site Blue=ORF Green=Tags(s)

TTTTGTAATACGACTCACTATAGGGCGGCCGGAATTCGTCGACTGGATCCGGTACCGAGGAGATCTGCC
GCC**CGATCGCC**

ATGAGCTATTTTTACAGGCTTAAGCTTATGAAAGAAGCTGTCTTGGTCAAACCTGCCCTTACATCTCTCC
CACTGTTCTCCAAACCCTATCCAGGAAGTCCAGAGACATGGAGATAAAGAACTACAGCAGCAGCACCTC
AGGCTTCATCCTCTGGCCTCTTCCAACCCTCAGCTGCAGAAACCTCTTTGGCATCTTCTCATC
ATGTACCTGCTCGCTGCGGTGGGAATGTGCTCATCATCCGGCCATCTACTCTGACCCAGGCTCCACA
CCCCTATGTACTTTTTCTCAGCAACTGTCTTTCATGGATATCTGTTTACAACAGTCATAGTGCCTAA
GATGCTGGTGAATTTTCTATCAGAGACAAAGTTATCTCCTATGTGGGCTGCCTGGCCAGATGACTTC
TTTATGGCATTGGGAACACTGACAGCTACCTGCTGGCCTCTATGGCCATCGACCGGCTGGTGGCCATCT
GCAACCCCTTACACTATGATGTGGTTATGAAACCACGGCATTGCCTGCTCATGCTATTGGGTTCTTGAG
CATCTCCACCTACATCCCTGTCCGCGTGCTACTTATGTCTCGCTTGTCTTCTGTGCCTCTCACATC
ATTAAGCACTTTTTCTGTGACACCCAGCCTGTGCTAAAGCTCTCCTGCTGACACATCTCCAGCCAGA
TGGTGGTATGACTGAGACCTTAGCTGTATTGTGACCCCTTCTGTGTATCATCTTCTCTACCTGCG
AATCATGGTCACTGTGCTCAGAATCCCCCTGCAGCCGGAAGTGAAGGCCCTTCTACCTGTGGCTCC
CACCTCACTGAGTACCCCTTTCTATGGGAGTATTTATGTCTATTTTAGGCCCTGTCCATGTACT
CAGTGGTTAGGGACCGGTAGCCACAGTTATGTACACAGTAGTGACACCCATGCTGAACCCCTTTCATCTA
CAGCCTGAGGAACAAAGATATGAAGAGGGTTTGAAGAAATTACAGGACAGAATTTACCG

ACGCGTACGCGGCCGCTCGAG - GFP Tag - GTTTAA



[View online »](#)

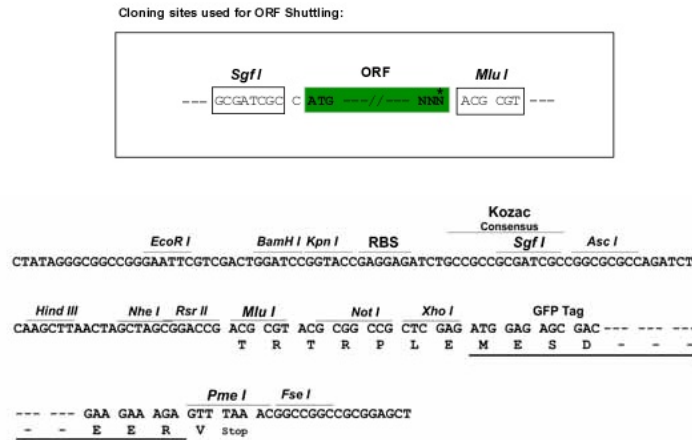
Protein Sequence: >RG211356 representing NM_001004453
 Red=Cloning site Green=Tags(s)

MSYFYRLKLMKEAVLVKLPFTSLPLLLQTLSRKSRDMEIKNYSSTSGFILLGLSSNPQLQKPLFAIFLI
 MYLLAAVGNVLIIPAIYSDPRLHTPMYFFLSNLSFMDICFTTVIVPKMLVNFVSETKVISYVGCLAQMYF
 FMAFGNTDSYLLASMAIDRLVAICNPLHYDVVMKPRHCLLMLLGSCSISHLHSLFRVLLMSRLSFCASHI
 IKHFFCDTQPVLKLSGSDTSSSQMVVMTETLAVIVTPFLCIIIFSYLRIMVTVLRIPSAAGKWKAFSTCGS
 HLTAVALFYGSIIVVYFRPLSMYSVVRDRVATVMYTVVTPMLNPFYSLRNKDMKRLKLLQDRIYR

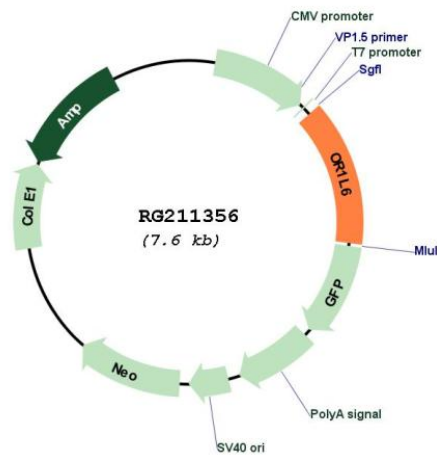
TRTRPLE - GFP Tag - V

Restriction Sites: SgfI-MluI

Cloning Scheme:



Plasmid Map:



ACCN: NM_001004453

ORF Size: 1044 bp

OTI Disclaimer:	The molecular sequence of this clone aligns with the gene accession number as a point of reference only. However, individual transcript sequences of the same gene can differ through naturally occurring variations (e.g. polymorphisms), each with its own valid existence. This clone is substantially in agreement with the reference, but a complete review of all prevailing variants is recommended prior to use. More info
OTI Annotation:	This clone was engineered to express the complete ORF with an expression tag. Expression varies depending on the nature of the gene.
Components:	The ORF clone is ion-exchange column purified and shipped in a 2D barcoded Matrix tube containing 10ug of transfection-ready, dried plasmid DNA (reconstitute with 100 ul of water).
Reconstitution Method:	<ol style="list-style-type: none">1. Centrifuge at 5,000xg for 5min.2. Carefully open the tube and add 100ul of sterile water to dissolve the DNA.3. Close the tube and incubate for 10 minutes at room temperature.4. Briefly vortex the tube and then do a quick spin (less than 5000xg) to concentrate the liquid at the bottom.5. Store the suspended plasmid at -20°C. The DNA is stable for at least one year from date of shipping when stored at -20°C.
RefSeq:	NM_001004453.1 , NP_001004453.1
RefSeq Size:	1044 bp
RefSeq ORF:	936 bp
Locus ID:	392390
UniProt ID:	Q8NGR2
Cytogenetics:	9q33.2
Protein Families:	Transmembrane
Protein Pathways:	Olfactory transduction
Gene Summary:	Olfactory receptors interact with odorant molecules in the nose, to initiate a neuronal response that triggers the perception of a smell. The olfactory receptor proteins are members of a large family of G-protein-coupled receptors (GPCR) arising from single coding-exon genes. Olfactory receptors share a 7-transmembrane domain structure with many neurotransmitter and hormone receptors and are responsible for the recognition and G protein-mediated transduction of odorant signals. The olfactory receptor gene family is the largest in the genome. The nomenclature assigned to the olfactory receptor genes and proteins for this organism is independent of other organisms. [provided by RefSeq, Jul 2008]