

Product datasheet for **RG211342**

Chimaerin 2 (CHN2) (NM_004067) Human Tagged ORF Clone

Product data:

Product Type:	Expression Plasmids
Product Name:	Chimaerin 2 (CHN2) (NM_004067) Human Tagged ORF Clone
Tag:	TurboGFP
Symbol:	Chimaerin 2
Synonyms:	ARHGAP3; BCH; CHN2-3; RHOGAP3
Mammalian Cell Selection:	Neomycin
Vector:	pCMV6-AC-GFP (PS100010)
E. coli Selection:	Ampicillin (100 ug/mL)



[View online »](#)

ORF Nucleotide Sequence:

>RG211342 representing NM_004067
 Red=Cloning site Blue=ORF Green=Tags(s)

TTTTGTAATACGACTCACTATAGGGCGGCCGGAATTCGTCGACTGGATCCGGTACCGAGGAGATCTGCC
 GCCGCGATCGCC

ATGGCAGCGTCCAGCAACTCCAGCCTGTCCGGCTCGTCGGTGTCTCCGATGCTGAAGAATACCAGCCTC
 CTATATGGAAATCATACTTATATCAGTTACAGCAAGAGGCACCTCGTCCCAAGAGAATCATTGTCTCG
 GGAGGTGAAAAACAGACCAAAATATTATGGAAGAGAGTTTCATGGGATCATCTCTCGGGAGCAGGCGGAT
 GAGCTTCTTGGAGGCGTGGAGGGTGCCTACATCCTTAGAGAAAAGCCAGCGGCAACCAGGATGCTACACGC
 TGGCTCTCAGGTTTGGAAACCAGACCTTAAACTACAGGCTCTTCCACGACGGGAAACACTTTGTGGGTGA
 GAAGAGGTTTGTGTCGATTCATGATCTGGTGACAGATGGCTTGATAACACTGTACATAGAAAACAAAAGCT
 GCCGAGTACATTTCAAAAATGACAATAACCCCATCTATGAACACATTGGATATGCCACCCTACTCAGAG
 AAAAGTATCCAGAAGGCTGAGCAGGTCTAAAAATGAACCAAGAAAAACAAACGTCACACATGAAGAACA
 CACAGCGGTGAAAAAGATCTCCTCCCTGGTTCGAAGGGCTGCCCTCACACACAACGACAACCACTTCAAT
 TATGAGAAGACACACAACTTAAGGTCCACACGTTCCGAGGCCACACTGGTGTGAATATTGTGCCAATT
 TCATGTGGGGGCTCATCGCCAAGGGGTCCGGTGTCTCAGACTGTGGATTGAACGTACACAACAGTGTTT
 CAAGCAGGTTCCCAATGACTGCCAACCTGATCTCAAGAGGATCAAGAAAGTACTGTTGTGACCTCACA
 ACATTTGTGAAGGCTCACAACACTCAGAGACCCATGGTGGTAGACATATGCATTCCGGAAATTGAAGCAA
 GAGGATTAATAATCGGAAGGCCTTACAGAGTCTCTGGTTCACGAAACATTGAAGATGTCAAAATGGC
 ATTTGACAGAGATGGTGAAGGCGCATATCTGCCAATGTCTATCCAGACATAAACATCATCACTGGA
 GCCCTTAAACTGTATTTACAGAGACTTACCATCCCTGTATCACATATGATACCTATTCCAAATTTATAG
 ATGCAGCAAAAACTCCAATGCAGATGAGAGGCTGGAAGCCGTCATGAAGTGCTGATGCTGCTGCCCTC
 TGCCCACTATGAAACCTCCGGTACCTAATGATCCACCTCAAAAAGGTTACTATGAATGAAAAAGACAAT
 TTCATGAATGCAGAAAATCTGGGATCGTGTGGGCCCACTCTGATGAGGCCCTGAGGACAGCACCC
 TGACCACCCTGCATGATATGCGGTACCAAAAGCTGATTGTGCAGATTTTAAAGAAAACGAAGACGTTTT
 ATTC

ACGCGTACGCGGCCGCTCGAG – GFP Tag – GTTTAA

Protein Sequence:

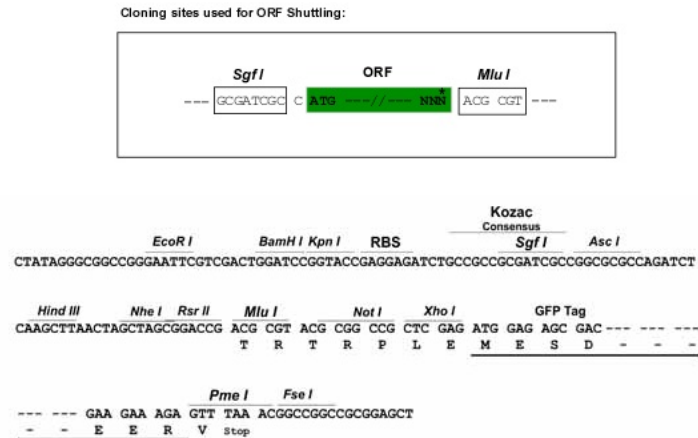
>RG211342 representing NM_004067
 Red=Cloning site Green=Tags(s)

MAASSNSLSGSSVSSDAEEYQPPIWKSPLYQLQQEAPRPKRIICPREVENRPKYYGREFHGIISREQAD
 ELLGGVEGAYILRESQRQPGCYTLALRFGNQLNYRLFHDGKHFVGEKRFESIHDLVTDGLITLYIETKA
 AEYISKMTTNPIYEHIGYATLLREKVSRRLSRSKNEPRKTNVTHEEHTAVEKISSLVRRRAALTHNDNHFN
 YEKTHNFVHTFRGPHWCEYCANFMWGLIAQGVRCSDCGLNVHKQCSKHVPNDQCQPDLKRIKKVYCCDLT
 TLVKAHNTQRPMVVDICIREIEARGLKSEGLYRVSGFTEHIEDVKMAFDRDGEKADISANVYPDINIITG
 ALKLYFRDLPIPVITYDYTSKFIDAAKISNADERLEAVHEVLMMLPPAHYETLRYLMIHLKKVTMNEKDN
 FMNAENLGIVFGPTLMRPPEDSTLTTLHDMRYQKLIVQILINEDVLF

TRTRPLE – GFP Tag – V

Restriction Sites:

SgfI-MluI

Cloning Scheme:


ACCN: NM_004067

ORF Size: 1404 bp

OTI Disclaimer: The molecular sequence of this clone aligns with the gene accession number as a point of reference only. However, individual transcript sequences of the same gene can differ through naturally occurring variations (e.g. polymorphisms), each with its own valid existence. This clone is substantially in agreement with the reference, but a complete review of all prevailing variants is recommended prior to use. [More info](#)

OTI Annotation: This clone was engineered to express the complete ORF with an expression tag. Expression varies depending on the nature of the gene.

Components: The ORF clone is ion-exchange column purified and shipped in a 2D barcoded Matrix tube containing 10ug of transfection-ready, dried plasmid DNA (reconstitute with 100 ul of water).

Reconstitution Method:

1. Centrifuge at 5,000xg for 5min.
2. Carefully open the tube and add 100ul of sterile water to dissolve the DNA.
3. Close the tube and incubate for 10 minutes at room temperature.
4. Briefly vortex the tube and then do a quick spin (less than 5000xg) to concentrate the liquid at the bottom.
5. Store the suspended plasmid at -20°C. The DNA is stable for at least one year from date of shipping when stored at -20°C.

RefSeq: [NM_004067.4](#)

RefSeq Size: 2213 bp

RefSeq ORF: 1407 bp

Locus ID: 1124

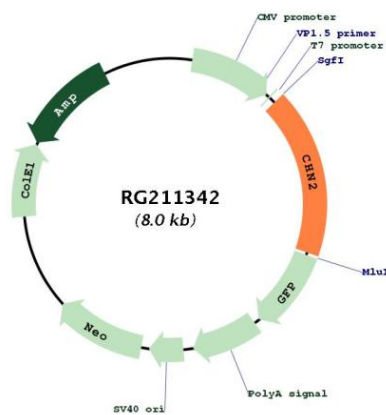
UniProt ID: [P52757](#)

Cytogenetics: 7p14.3

Domains: RhoGAP, SH2, DAG_PE-bind

Gene Summary: This gene encodes a guanosine triphosphate (GTP)-metabolizing protein that contains a phorbol-ester/diacylglycerol (DAG)-type zinc finger, a Rho-GAP domain, and an SH2 domain. The encoded protein translocates from the cytosol to the Golgi apparatus membrane upon binding by diacylglycerol (DAG). Activity of this protein is important in cell proliferation and migration, and expression changes in this gene have been detected in cancers. A mutation in this gene has also been associated with schizophrenia in men. Alternative transcript splicing and the use of alternative promoters results in multiple transcript variants. [provided by RefSeq, May 2014]

Product images:



Circular map for RG211342