

Product datasheet for **RG211273**

KLF8 (NM_007250) Human Tagged ORF Clone

Product data:

Product Type: Expression Plasmids
Product Name: KLF8 (NM_007250) Human Tagged ORF Clone
Tag: TurboGFP
Symbol: KLF8
Synonyms: BKLF3; ZNF741
Mammalian Cell Selection: Neomycin
Vector: pCMV6-AC-GFP (PS100010)
E. coli Selection: Ampicillin (100 ug/mL)
ORF Nucleotide Sequence: >RG211273 representing NM_007250
Red=Cloning site Blue=ORF Green=Tags(s)

TTTTGTAATACGACTCACTATAGGGCGGCCGGAATTCGTCGACTGGATCCGGTACCGAGGAGATCTGCC
GCC**CGATCGCC**

ATGGTCGATATGGATAAACTCATAAACAACTTGGAGGTCCAACCTAATTCAGAAGGTGGCTCAATGCAGG
TATTCAAGCAGGTCAGTCTTCTGTTCCGGAACAGAGATCCCCCTGAGATAGAATACAGAAGTAATATGAC
TTCTCCAACACTCCTGGATGCCAACCCCATGGAGAACCCAGCACTGTTAATGACATCAAGATTGAGCCC
CCAGAAGAAGCTTTGGCTAGTGATTTAGCCTGCCCAAGTGAACCAAGTTGACCTCTCCTTTACAAGC
CCAAGGCTCCTCTCCAGCCTGCTAGCATGCTACAAGCTCCAATACGTCCCCCAAGCCACAGTCTTCTCC
CCAGACCTTGTGGTGTCCACGTC AACATCTGACATGAGCACTTACAGCAACATTCTACTGTTCTGACC
CCAGGCTCTGTCCTGACCTCCTCTCAGAGCACTGGTAGCCAGCAGATCTTACATGTCATTACACATATCC
CCTCAGTCAGTCTGCCAAATAAGATGGGTGGCCTGAAGACCATCCCAGTGGTAGTGCAGTCTCTGCCAT
GGTGTATACTACTTTGCCTGCAGATGGGGGCCCTGCAGCCATTACAGTCCCCTCATTGGAGGAGATGGT
AAAAATGCTGGATCAGTGAAGTTGACCCACCTCCATGTCTCCACTGGAATTC AAGTACAGTGAAG
AGAGTACAATTGAGAGTGGATCCTCAGCCTTGCAGAGTCTGCAGGACTACAGCAAGAACCAGCAGCAAT
GGCCCAAATGCAGGGAGAAGAGTCGCTTGAAGAGAAGACGGATTACCAATGTGACTTTGCAGGA
TGCAGCAAAGTGTACACCAAAAGCTCTCACCTGAAAGCTCACCGCAGAATCCATACAGGAGAGAAGCCTT
ATAAATGCACCTGGGATGGCTGCTCCTGGAATTTGCTCGCTCAGATGAGCTCACTCGCCATTTCCGCAA
GCACACAGGCATCAAGCCTTTTCGGTGCACAGACTGCAACCGCAGCTTTTCTCGTTCTGACCACCTGTCC
CTGCATCGCCGTCGCATGACACCATG

AG**CGGACCG**ACGCGTACGCGGCCGCTCGAG - GFP Tag - GTTTAA



[View online »](#)

Protein Sequence: >RG211273 representing NM_007250
 Red=Cloning site Green=Tags(s)

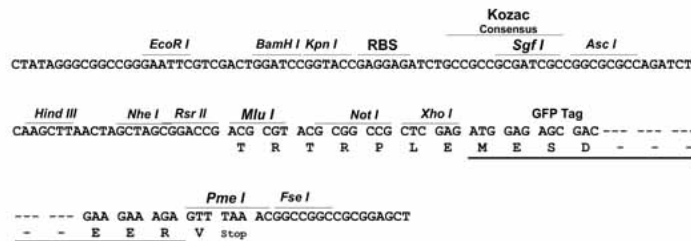
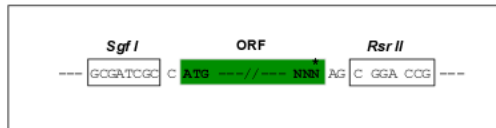
MVDMDKL INNLEVQLNSEGGSMQVFKQVTASVRNRDPPEIEYRSNMTSPTLLDANPMENPALFNDIKIEP
 PEELLASDFSLPQVEPVDLSFHKPKAPLQFASMLQAPIRPPKQSSPQTLVVSTSTSDMSTSANIPTVLT
 PGSVL TSSQSTGSQQILHVIHTIPSVSLPNKMGGLKTIPVVVQSLPMVYTTLPADGGPAAITVPLIGGDG
 KNAGSVKVDPTSMSPLEIPSDSEESTIESGSSALQSLQGLQQEPAAMAQMGEESLDLKRRIHQCDFAG
 CSKVYTKSSHLKAHRRRIHTGEKPYKCTWDGCSWKFARSDDELTRHFRKHTGIKPFRCCTDCNRSF SRSDHLS
 LHRRRHDTM

SGP TRRRLE - GFP Tag - V

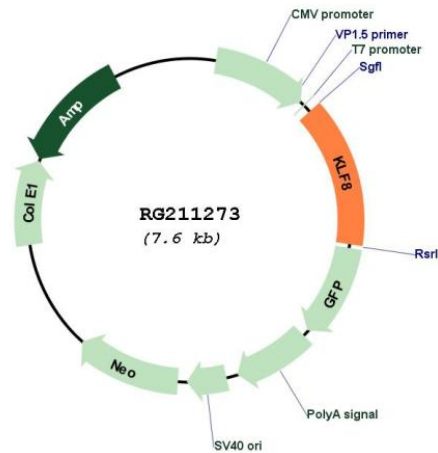
Restriction Sites: SgfI-RsrII

Cloning Scheme:

Cloning sites used for ORF Shuttling:



Plasmid Map:



ACCN: NM_007250

ORF Size:	1077 bp
OTI Disclaimer:	<p>Due to the inherent nature of this plasmid, standard methods to replicate additional amounts of DNA in E. coli are highly likely to result in mutations and/or rearrangements. Therefore, OriGene does not guarantee the capability to replicate this plasmid DNA. Additional amounts of DNA can be purchased from OriGene with batch-specific, full-sequence verification at a reduced cost. Please contact our customer care team at custsupport@origene.com or by calling 301.340.3188 option 3 for pricing and delivery.</p> <p>The molecular sequence of this clone aligns with the gene accession number as a point of reference only. However, individual transcript sequences of the same gene can differ through naturally occurring variations (e.g. polymorphisms), each with its own valid existence. This clone is substantially in agreement with the reference, but a complete review of all prevailing variants is recommended prior to use. More info</p>
OTI Annotation:	This clone was engineered to express the complete ORF with an expression tag. Expression varies depending on the nature of the gene.
Components:	The ORF clone is ion-exchange column purified and shipped in a 2D barcoded Matrix tube containing 10ug of transfection-ready, dried plasmid DNA (reconstitute with 100 ul of water).
Reconstitution Method:	<ol style="list-style-type: none"> 1. Centrifuge at 5,000xg for 5min. 2. Carefully open the tube and add 100ul of sterile water to dissolve the DNA. 3. Close the tube and incubate for 10 minutes at room temperature. 4. Briefly vortex the tube and then do a quick spin (less than 5000xg) to concentrate the liquid at the bottom. 5. Store the suspended plasmid at -20°C. The DNA is stable for at least one year from date of shipping when stored at -20°C.
RefSeq:	NM_007250.5 , NP_009181.2
RefSeq Size:	2559 bp
RefSeq ORF:	1080 bp
Locus ID:	11279
UniProt ID:	O95600
Cytogenetics:	Xp11.21
Protein Families:	Transcription Factors
Gene Summary:	<p>This gene encodes a protein which is a member of the Sp/KLF family of transcription factors. Members of this family contain a C-terminal DNA-binding domain with three Kruppel-like zinc fingers. The encoded protein is thought to play an important role in the regulation of epithelial to mesenchymal transition, a process which occurs normally during development but also during metastasis. A pseudogene has been identified on chromosome 16. Alternative splicing results in multiple transcript variants. [provided by RefSeq, Apr 2009]</p>