

Product datasheet for **RG211267**

ARFIP1 (NM_001025593) Human Tagged ORF Clone

Product data:

Product Type:	Expression Plasmids
Product Name:	ARFIP1 (NM_001025593) Human Tagged ORF Clone
Tag:	TurboGFP
Symbol:	ARFIP1
Synonyms:	HSU52521
Mammalian Cell Selection:	Neomycin
Vector:	pCMV6-AC-GFP (PS100010)
E. coli Selection:	Ampicillin (100 ug/mL)
ORF Nucleotide Sequence:	>RG211267 representing NM_001025593 Red=Cloning site Blue=ORF Green=Tags(s)

TTTTGTAATACGACTCACTATAGGGCGGCCGGAATTCGTCGACTGGATCCGGTACCGAGGAGATCTGCC
GCC**CGATCGCC**

ATGGCTCAAGAATCTCCCAAAAATTCAGCAGCAGAAATCCAGTGACTAGTAATGGAGAAGTTGATGACT
CTCGTGAACATAGCTTTAATAGGGATTTGAAGCATTTCATTACCATCTGGACTTGGTCTCTCAGAAACCCA
AATTACATCTCATGGCTTTGACAATACCAAGAGGGTGTATTGAAGCAGGAGCATTTCAGGTGGCCAG
AGAACACAGACAAAAAGTGGACCAGTTATTCTAGCAGATGAAATTAATAATCCTGCAATGGAAAAGTTAG
AACTTGTTAGAAAATGGAGTCTAAACACCTATAAGTGTACTCGACAGATTATCTCTGAGAAGCTAGGCCG
TGGCTCAAGAAGTGGACCTTGAAGCTCAGATTGATATTAAGGGATAACAAGAAAAATAT
GAAAATATTTTAAACTGGCTCAAACATTTGTCGACCCAGCTTTCCAGATGGTACATACCCAAAGGCAAC
TTGGAGATGCATTTGCTGACCTGAGTTTGAAGTCACTAGAATTCATGAAGAATTTGGCTATAATGCCGA
TACCCAGAAACTGCTGGCTAAAAATGGAGAGACTCTTCTTGGGGCCATTAATTTTTTCATTGCTAGTGTG
AACACTTTGGTGAATAAAACCATTAAGATACATTAATGACTGTGAAACAGTATGAAAGTCCAGGATTG
AATATGATGCATATCGCACTGATTTGGAAGAAGTGAATCTTGGACCACGTGACGCAAACTCTGCCAAA
GATTGAGCAGTCACAGCATCTCTCCAAGCACATAAGGAAAAATATGATAAAATGCGCAATGATGTTTCT
GTCAAATGAAATTTCTAGAAGAAAATAAGGTTAAAGTATTGCACAATCAGCTGGTCTTTTCCACAATG
CCATTGCCGCTTACTTTGCTGGGAATCAGAAGCAGCTTGAACAGACACTTAAACAGTTCCATATCAAATT
GAAAACCCCTGGAGTGGATGCCCATCTTGGCTTGAAGAACAG

ACGCGTACGCGGCCGCTCGAG - GFP Tag - GTTTAA



[View online »](#)

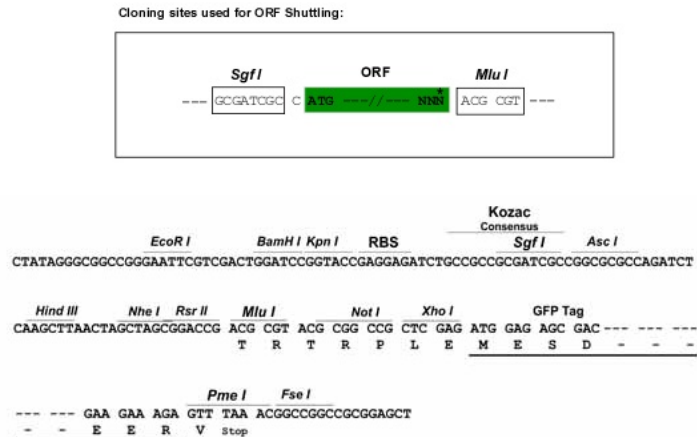
Protein Sequence: >RG211267 representing NM_001025593
 Red=Cloning site Green=Tags(s)

MAQESPKNAAEIPVTSNGEVDDREHSFNRLKHSPLPSGLGLSETQITSHGFDNTKEGVIEAGAFQGGQ
 RTQTKSGPVILADEIKNPAMEKLELVRKWSLNTYKCTRQIISEKLGSGSRTVDLELEAQIDILRDNKKKY
 ENILKLAQTLSTQLFQMVHTQRQLGDAFADLSLKLELHEEFGYNADTQKLLAKNGETLLGAINFFIASV
 NTLVNKTIEDTLMTVKQYESARIEYDAYRTDLEELNLGPRDANTLPKIEQSQHLFQAHKEKYDKMRNDVS
 VKLKFLEENKVKVLHNQLVLFHNAIAAYFAGNQKQLEQLKQFHKLKTPGVDAPSWLEEQ

TRTRPLE - GFP Tag - V

Restriction Sites: SgfI-MluI

Cloning Scheme:



ACCN: NM_001025593

ORF Size: 1023 bp

OTI Disclaimer: The molecular sequence of this clone aligns with the gene accession number as a point of reference only. However, individual transcript sequences of the same gene can differ through naturally occurring variations (e.g. polymorphisms), each with its own valid existence. This clone is substantially in agreement with the reference, but a complete review of all prevailing variants is recommended prior to use. [More info](#)

OTI Annotation: This clone was engineered to express the complete ORF with an expression tag. Expression varies depending on the nature of the gene.

Components: The ORF clone is ion-exchange column purified and shipped in a 2D barcoded Matrix tube containing 10ug of transfection-ready, dried plasmid DNA (reconstitute with 100 ul of water).

Reconstitution Method:

1. Centrifuge at 5,000xg for 5min.
2. Carefully open the tube and add 100ul of sterile water to dissolve the DNA.
3. Close the tube and incubate for 10 minutes at room temperature.
4. Briefly vortex the tube and then do a quick spin (less than 5000xg) to concentrate the liquid at the bottom.
5. Store the suspended plasmid at -20°C. The DNA is stable for at least one year from date of shipping when stored at -20°C.

RefSeq: [NM_001025593.2](#), [NP_001020764.1](#)

RefSeq Size: 2995 bp

RefSeq ORF: 1026 bp

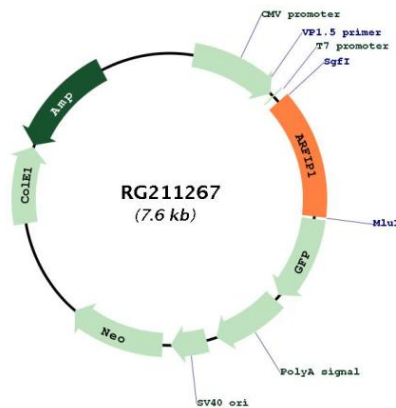
Locus ID: 27236

UniProt ID: [P53367](#)

Cytogenetics: 4q31.3

Gene Summary: Putative target protein of ADP-ribosylation factor.[UniProtKB/Swiss-Prot Function]

Product images:



Circular map for RG211267