

Product datasheet for **RG211205**

GPR 174 (GPR174) (NM_032553) Human Tagged ORF Clone

Product data:

Product Type:	Expression Plasmids
Product Name:	GPR 174 (GPR174) (NM_032553) Human Tagged ORF Clone
Tag:	TurboGFP
Symbol:	GPR 174
Synonyms:	FKSG79; GPCR17; LYPSR3
Mammalian Cell Selection:	Neomycin
Vector:	pCMV6-AC-GFP (PS100010)
E. coli Selection:	Ampicillin (100 ug/mL)
ORF Nucleotide Sequence:	>RG211205 representing NM_032553 Red=Cloning site Blue=ORF Green=Tags(s)

TTTTGTAATACGACTCACTATAGGGCGGCCGGAATTCGTCGACTGGATCCGGTACCGAGGAGATCTGCC
GCC**CGATCGCC**

ATGCTGCTAATTACACGTGTACCAGGCCAGATGGAGACAATACAGATTTTCGATACTTTATTTATGCAG
TGACATACACTGTCATTCTTGTGCCAGGTCTCATAGGGAATATATTAGCCCTGTGGGTATTCTATGGTTA
TATGAAAGAAAACAAACGAGCTGTGATTTTATGATAAACTTAGCCATTGCTGACTTACTACAAGTTCTT
TCCTTGCCACTGAGGATCTTCTACTACTTGAATCATGACTGGCCATTTGGCCTGGTCTCTGCATGTTCT
GTTTCTACCTGAAGTATGTCAACATGTATGCAAGCATCTACTTCTGGTCTGCATCAGTGTGCGACGATT
TTGGTTTCTCATGTACCCCTTTCGCTTCCATGACTGCAAACAGAAATATGACCTGTACATCAGCATTGCT
GGCTGGCTGATCATCTGCCTTGCCTGTGTACTCTTCCACTCCTCAGAACCAGTGATGATACCTCTGGCA
ATAGGACCAAATGCTTTGTGGATCTTCCCTACCAGGAATGTCAACCTGGCCAGTCCGTTGTTATGATGAC
CATTGGCGAGTTGATTGGGTTTGTAACTCCGCTTCTGATTGTCCTATATTGTACCTGGAAGACGGTTTTA
TCACTGCAAGATAAATATCCCATGGCCAAAGATCTTGGAGAGAAACAGAAAGCCTTGAAGATGATTCTAA
CCTGTGCAGGGTATTCCTAATTTGCTTTCACCTTATCATTTTCAGTTTTCCTTTAGATTTCCCTGGTGAA
GTCCAATGAAATAAAAGCTGCCTAGCCAGAAGGGTATTCTAATATTTTCATTCTGTGCCATTGTGCTT
GCTAGTCTGAATTCATGTCTTGACCCAGTCATATACTACTTTTCCACTAATGAGTCCGAAGACGGCTTT
CAAGACAAGATTTGCATGACAGCATCCAACCTCCATGCAAAATCCTTTGTGAGTAACCATACAGCTTCCAC
CATGACACCTGAATTATGC

ACGCGTACGCGGCCGCTCGAG - GFP Tag - GTTTAA



[View online »](#)

Protein Sequence: >RG211205 representing NM_032553
 Red=Cloning site Green=Tags(s)

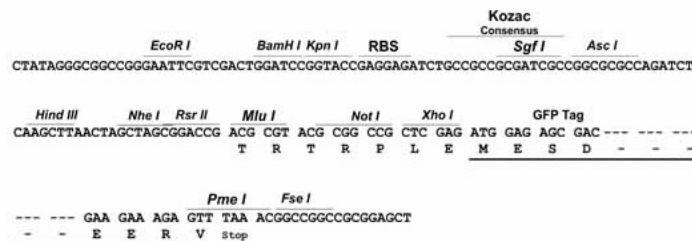
MPANYTCTRPDGDNTDFRYFIYAVTYTVILVPGLIGNILALWVFGYMKETKRAVIFMINLAIADLLQVL
 SLPLRIFYYLNHDWPFPGPLCMFCFYLYKYYNMYASIYFLVCISVRRFWFLMYPFRFHDCCKQKYDL YISIA
 GWLIICLACVLFPLLRTSDDTSGNRTKCFVDLPTRNVNLAQSVMMTIGELIGFVTPLLIVLYCTWKTVL
 SLQDKYPMAQDLGEKQKALKMILTCAGVFLICFAPYHFSFPLDFLVKSNEIKSCLARRVILIFHSVALCL
 ASLNSCLDPVIYYFSTNEFRRLSRQDLHDSIQLHAKSFVSNHTASTMTPELC

TRTRPLE - GFP Tag - V

Restriction Sites: SgfI-MluI

Cloning Scheme:

Cloning sites used for ORF Shuttling:



ACCN: NM_032553

ORF Size: 999 bp

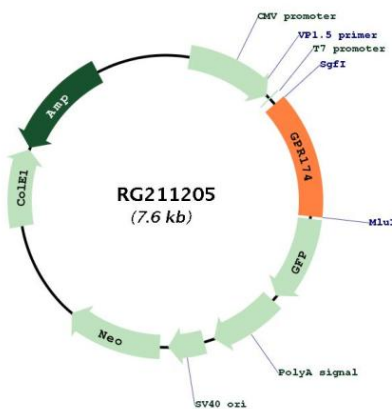
OTI Disclaimer: Due to the inherent nature of this plasmid, standard methods to replicate additional amounts of DNA in E. coli are highly likely to result in mutations and/or rearrangements. Therefore, OriGene does not guarantee the capability to replicate this plasmid DNA. Additional amounts of DNA can be purchased from OriGene with batch-specific, full-sequence verification at a reduced cost. Please contact our customer care team at custsupport@origene.com or by calling 301.340.3188 option 3 for pricing and delivery.

The molecular sequence of this clone aligns with the gene accession number as a point of reference only. However, individual transcript sequences of the same gene can differ through naturally occurring variations (e.g. polymorphisms), each with its own valid existence. This clone is substantially in agreement with the reference, but a complete review of all prevailing variants is recommended prior to use. [More info](#)

OTI Annotation: This clone was engineered to express the complete ORF with an expression tag. Expression varies depending on the nature of the gene.

Components:	The ORF clone is ion-exchange column purified and shipped in a 2D barcoded Matrix tube containing 10ug of transfection-ready, dried plasmid DNA (reconstitute with 100 ul of water).
Reconstitution Method:	<ol style="list-style-type: none">1. Centrifuge at 5,000xg for 5min.2. Carefully open the tube and add 100ul of sterile water to dissolve the DNA.3. Close the tube and incubate for 10 minutes at room temperature.4. Briefly vortex the tube and then do a quick spin (less than 5000xg) to concentrate the liquid at the bottom.5. Store the suspended plasmid at -20°C. The DNA is stable for at least one year from date of shipping when stored at -20°C.
RefSeq:	<u>NM_032553.3</u>
RefSeq Size:	1258 bp
RefSeq ORF:	1002 bp
Locus ID:	84636
UniProt ID:	<u>Q9BXC1</u>
Cytogenetics:	Xq21.1
Protein Families:	Druggable Genome, GPCR, Transmembrane
MW:	38.5 kDa
Gene Summary:	This gene encodes a protein belonging to the G protein-coupled receptor superfamily. These proteins are characterized by the presence of seven alpha-helical transmembrane domains, and they activate or interact with various endogenous or exogenous ligands, including neurotransmitters, hormones, and odorant and taste substances. This family member is classified as an orphan receptor because the cognate ligand has not been identified. [provided by RefSeq, Sep 2011]

Product images:



Circular map for RG211205