

## Product datasheet for **RG211193**

### ZNF566 (NM\_032838) Human Tagged ORF Clone

#### Product data:

Product Type:	Expression Plasmids
Product Name:	ZNF566 (NM_032838) Human Tagged ORF Clone
Tag:	TurboGFP
Symbol:	ZNF566
Mammalian Cell Selection:	Neomycin
Vector:	pCMV6-AC-GFP (PS100010)
E. coli Selection:	Ampicillin (100 ug/mL)
ORF Nucleotide Sequence:	>RG211193 representing NM_032838 Red=Cloning site Blue=ORF Green=Tags(s)

TTTTGTAATACGACTCACTATAGGGCGGCCGGAATTCGTCGACTGGATCCGGTACCGAGGAGATCTGCCGCC**CGATCGCC**

ATGGCTCAGGAGTCAGTGATGTTTCAGTGATGTGTCCGTAGACTTCTCTCAGGAGGAGTGGGAATGCCTGA  
ATGATGATCAGAGAGATTTATACAGAGATGTGATGTTGGAGAATTACAGCAACCTGGTTTCAATGGGGCA  
TTCTATTTCTAAACCAATGTGATCTCCTACTTGGAGCAAGGGAAGGAGCCCTGGTTGGCTGACAGAGAG  
CTAACAAGAGGCCAGTGGCCAGTCCCTGGAATCAAGATGTGAGACCAAGAAATTATTTCTGAAGAAAGAAA  
TTTATGAAATAGAATCAACCCAGTGGGAAATAATGGAAAACTCACAAGACGTGATTTTCAGTGCTCCAG  
TTTCAGAGATGATTGGGAATGTAATCGGCAGTTTAAGAAAGAAGCTCGGCTCTCAGGGGGACATTTCAAT  
CAATTGGTATTCATCATGAAGATCTGCCCACTTTGAGTCACCATCCATCCTTCACATTACAGCAAATCA  
TTAACAGTAAAAAGAAATTTCTGTGCATCTAAAGAATATAGGAAAACCTTTAGACATGGCTCACAGTTTGC  
TACACATGAGATAATTCATACCATTTGAGAAGCCTTATGAATGTAAGGAATGTGGAAAGTCCCTTTAGACAT  
CCCTCAAGACTCACTCATCATCAGAAAATTCATACTGGCAAGAAAACCTTTGAATGTAAGGAATGTGGAA  
AAACCTTTATTTGTGGCTCAGACCTTACTCGACATCACAGAATTCACACTGGTGAGAAACCTATGAATG  
TAAGGAATGTGGAAAGCCTTTAGTAGTGGTTCAAACCTCACTCGACATCAGAGAATTCACACAGGTGAG  
AAGCCTTATGAATGCAAAGAATGCGGGAAGGCCTTTAGTAGTGGCTCAAACCTTACTCAACATCAGAGAA  
TTCATACTGGGAAAAACCTATGAATGTAAGGAATGTGGCAATGCCTTTAGTCAGAGCTACAACCTTAT  
TAAACATCAAAGAATCCATACAGGTGAGAAACCTTACGAATGTAAGGAATGTGAAAAGGCTTTTCGTTCT  
GGCTCAGACCTTACTAGACATCAGAGAATTCATACTGGGAGAAAACCTATGAATGTAAGATATGTGGGA  
AGGCTTATTTCTCAGAGTTCACAGCTTATTAGTCATCATAGAATTCATACTAGTGAGAAAACCTATGAATA  
TAGGGAATGTGGAAAGAAGCTTTAATTATGACCCACAACCTATTCAGCATCAAATTTGTACTGG

**ACGCGT**ACGCGGCCGCTCGAG - GFP Tag - GTTTAA



[View online »](#)

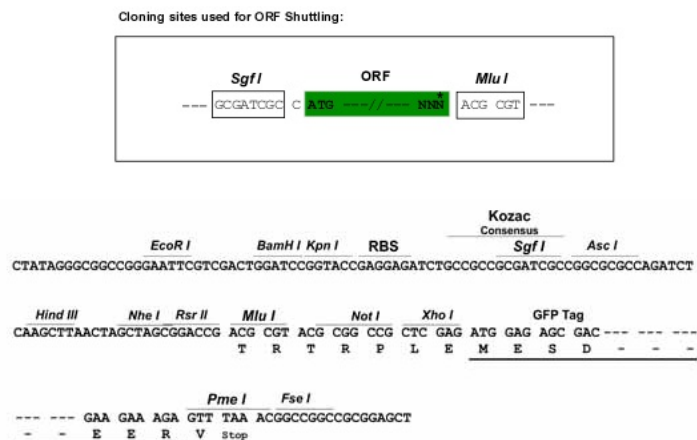
**Protein Sequence:** >RG211193 representing NM\_032838  
Red=Cloning site Green=Tags(s)

MAQESVMFSDVSVDFSQEEWECLNDDQRDLYRDVMLENYSNLVSMGHSISKPNVISYLEQGKEPWLADRE  
 LTRGQWPVLESRCETKKLFLKKEIYEIESTQWEIMEKL TRRDFQCSSFRRDDWECNRQFKKELGSQGGHFN  
 QLVFTHEDLPTLSHHPSFTLQQI INSKKKFCASKEYRKTFRHGSQFATHEIIHTIEKPYECKEKGKFSFRH  
 PSRLTHHQKIHTGKKPFECKEKGKTFICGSDLTRHHRIHTGEKPYECKEKGKAFSSGSNFTRHQRIHTGE  
 KPYECKEKGKAFSSGSNFTQHQRHTGEKPYECKEKGNAFSQSSQLIKHQRIHTGEKPYECKEKEKAFRS  
 GSDLTRHQRIHTGEKPYECKIKGKAYSQSSQLISHHRIHTSEKPYEYRECGKNFNYPQLIQHQLNYW

TRTRPLE - GFP Tag - V

**Restriction Sites:** SgfI-MluI

**Cloning Scheme:**



**ACCN:** NM\_032838

**ORF Size:** 1254 bp

**OTI Disclaimer:** The molecular sequence of this clone aligns with the gene accession number as a point of reference only. However, individual transcript sequences of the same gene can differ through naturally occurring variations (e.g. polymorphisms), each with its own valid existence. This clone is substantially in agreement with the reference, but a complete review of all prevailing variants is recommended prior to use. [More info](#)

**OTI Annotation:** This clone was engineered to express the complete ORF with an expression tag. Expression varies depending on the nature of the gene.

**Components:** The ORF clone is ion-exchange column purified and shipped in a 2D barcoded Matrix tube containing 10ug of transfection-ready, dried plasmid DNA (reconstitute with 100 ul of water).

**Reconstitution Method:**

1. Centrifuge at 5,000xg for 5min.
2. Carefully open the tube and add 100ul of sterile water to dissolve the DNA.
3. Close the tube and incubate for 10 minutes at room temperature.
4. Briefly vortex the tube and then do a quick spin (less than 5000xg) to concentrate the liquid at the bottom.
5. Store the suspended plasmid at -20°C. The DNA is stable for at least one year from date of shipping when stored at -20°C.

**RefSeq:** [NM\\_032838.4](#)

**RefSeq Size:** 2643 bp

**RefSeq ORF:** 1257 bp

**Locus ID:** 84924

**UniProt ID:** [Q969W8](#)

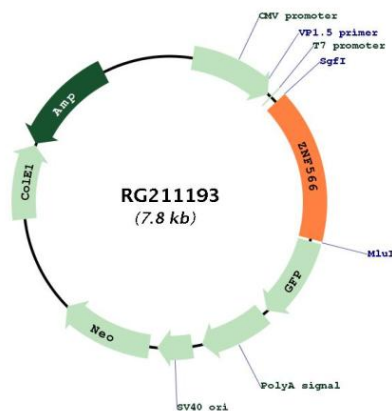
**Cytogenetics:** 19q13.12

**Domains:** KRAB, zf-C2H2

**Protein Families:** Transcription Factors

**Gene Summary:** May be involved in transcriptional regulation.[UniProtKB/Swiss-Prot Function]

### Product images:



Circular map for RG211193