

Product datasheet for **RG211189**

RGS6 (NM_004296) Human Tagged ORF Clone

Product data:

Product Type:	Expression Plasmids
Product Name:	RGS6 (NM_004296) Human Tagged ORF Clone
Tag:	TurboGFP
Symbol:	RGS6
Synonyms:	GAP; HA117; S914
Mammalian Cell Selection:	Neomycin
Vector:	pCMV6-AC-GFP (PS100010)
E. coli Selection:	Ampicillin (100 ug/mL)



[View online »](#)

ORF Nucleotide Sequence:

>RG211189 representing NM_004296
 Red=Cloning site Blue=ORF Green=Tags(s)

TTTTGTAATACGACTCACTATAGGGCGGCCGGAATTCGTCGACTGGATCCGGTACCGAGGAGATCTGCC
 GCC**CGGATCGCC**

ATGGCTCAAGGATCCGGGATCAAAGAGCAGTGGGGTGTCTGACCCAGAGGAGAGTTCTCCAAACATGA
 TCGTTTACTGCAAAATTGAAGACATCATTACAAAGATGCAAGATGACAAGACAGGGGGTGTGCCATCAG
 AACAGTCAAGAGCTTTCTCTCCAAAATCCCCAGTGTCTGACAGGTAAGTACTGACATTGTGCAGTGGCTTATG
 AAGAACCCTTCCATTGAGGACCCAGTTGAAGCAATACACTTGGGGAGCCTTATCGCTGCCAGGGCTACA
 TCTTTCCAATCTCAGACCATGTTCTCACCATGAAGGATGATGGCACCTTTTATCGTTTCCAGGCTCCGTA
 CTTCTGGCCTTGAAGTCTGGGAACCTGAAAACACTGACTATGCCATCTATCTCTGTAAGAGGACAATG
 CAAAATAAAGCAAGGCTGGAAGTGGCAGATTATGAAGCAGAAAACCTTAGCAAGACTCCAGAGGGCCTTTG
 CGAGGAAGTGGGAATTCATCTTTATGCAAGCAGAAGCACAAGTAAAGATTGACCGGAAAAAGACAAGAC
 AGAAAGGAAAATTTGGATAGTCAAGAAGCAGCCTTTTGGGATGTCCACAGGCCTGTGCCAGGCTGTGTG
 AACACAACAGAAATGGATATCCGAAAATGTCGACGTTTGAAGAATCCACAAAAGTTAAAAAGTCCGGTGT
 ATGGCGTGACTGAAGAGTCCCAGGCACAGAGCCCGGTGCATGTAAGTACTCAGCCAACCAATCAGGAAAAACAAC
 AAAAGAGGACATCCGAAAACAGATAACATTTTTGAACGCACAGATCGACAGACATTTGTTTAAAAATGTCC
 AAAGTGGCTGAAAGTTAATTGCCTACACGGAACAATAATGTGGAATATGACCCCTTGATAACACCAGCTG
 AGCCATCCAACCTTGGATCAGCGATGACGTTGCTTTGTGGGACATAGAGATGAGCAAAGAGCCAGCCA
 ACAGCGAGTAAAAAGATGGGGCTTCTCTTCGATGAGATATTGAAGGACCAGGTGGGGCGGACAGTTT
 CTACGATTCCTGGAGTCCGAATTCAGTTCAGAAAACCTCAGGTTCTGGCTGGCTCCAAGATCTTAAGA
 AACAAACCCTACAGGATGTGCCAAGAGGGTAGAAGAAATCTGGCAAGAGTTTCTGGCTCCAGGGCTCC
 AAGTGCAATCAACCTGGATTCTCACAGCTATGAGATAACCAAGTCAAAATGTCAAAGATGGAGGGAGATAT
 ACATTTGAAGACGCCAGGAGCAGATCTACAAGCTGATGAAGAGTGACAGCTATGCCCGCTTCTCCGGT
 CAAATGCTTACCAGGATTTGCTGCTGGCCAAGAAGAAGGAAAGTTCGCTGGCGGGCAAGCGCCTCACGGG
 CCTGATGCAGTCTCC

ACGCGTACGCGGCCGCTCGAG - GFP Tag - GTTTAA

Protein Sequence:

>RG211189 representing NM_004296
 Red=Cloning site Green=Tags(s)

MAQSGDQRAVGVADPEESSPNMIVYCKIEDIITKMQDDKTGGVPIRTVKSFSLKIPSVVTGTDIVQWLM
 KNL SIEDPVEAIHLGSLIAAQGYIFPISDHVLTMKDDGTFYRFQAPYFWPNSCWEPENTDYAIYLCRMT
 QNKARLELADYEAEENLARLQRAFARKWEFIFMQAEQVKIDRKKDKTERKILDSQERAFWDVHRPVPGCV
 NTTEMDIRKCRRLKNPQVKKSVYGVTEESQAQSPVHVL S QPIRKTTKEDIRKQITFLNAQIDRHCLKMS
 KVAESLIAYTEQYVEYDPLITPAEPSNPWISDDVALWDIEMSKEPSQQRVKRWGFSFDEILKDQVGRDQF
 LRFLESEFSSENLRFWLA VQDLKKQPLQDVAKRVEEIWQEFLAPGAPSAINLDSHSYEITSQNVKDGGRY
 TFEDAQEHIYKLMKSDSYARFLRSNAYQDLLLAKKKGKSLAGKRLTGLMQSS

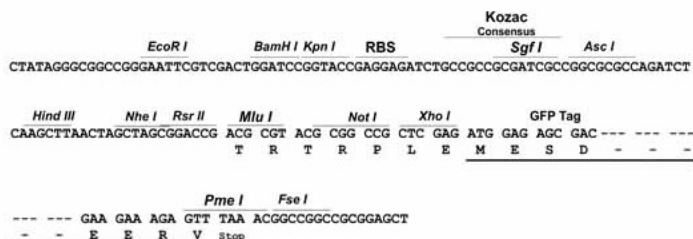
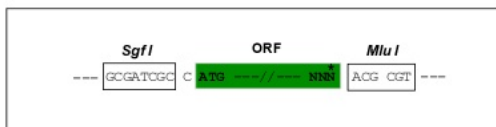
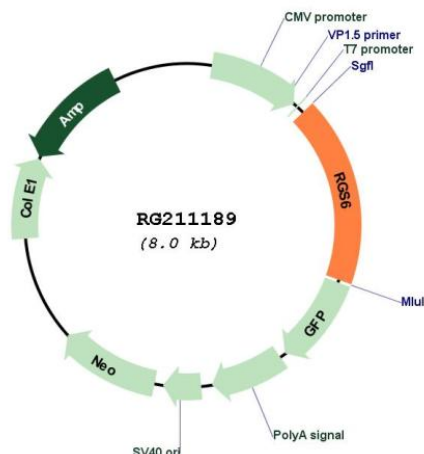
TRTRPLE - GFP Tag - V

Restriction Sites:

Sgfl-MluI

Cloning Scheme:

Cloning sites used for ORF Shutting:


Plasmid Map:

ACCN: NM_004296

ORF Size: 1416 bp

OTI Disclaimer: The molecular sequence of this clone aligns with the gene accession number as a point of reference only. However, individual transcript sequences of the same gene can differ through naturally occurring variations (e.g. polymorphisms), each with its own valid existence. This clone is substantially in agreement with the reference, but a complete review of all prevailing variants is recommended prior to use. [More info](#)

OTI Annotation: This clone was engineered to express the complete ORF with an expression tag. Expression varies depending on the nature of the gene.

Components: The ORF clone is ion-exchange column purified and shipped in a 2D barcoded Matrix tube containing 10ug of transfection-ready, dried plasmid DNA (reconstitute with 100 ul of water).

Reconstitution Method:

1. Centrifuge at 5,000xg for 5min.
2. Carefully open the tube and add 100ul of sterile water to dissolve the DNA.
3. Close the tube and incubate for 10 minutes at room temperature.
4. Briefly vortex the tube and then do a quick spin (less than 5000xg) to concentrate the liquid at the bottom.
5. Store the suspended plasmid at -20°C. The DNA is stable for at least one year from date of shipping when stored at -20°C.

RefSeq: [NM_004296.7](#)

RefSeq Size: 3105 bp

RefSeq ORF: 1419 bp

Locus ID: 9628

UniProt ID: [P49758](#)

Cytogenetics: 14q24.2

Domains: RGS, DEP, G-gamma

Protein Families: Druggable Genome

Gene Summary: This gene encodes a member of the RGS (regulator of G protein signaling) family of proteins, which are defined by the presence of a RGS domain that confers the GTPase-activating activity of these proteins toward certain G alpha subunits. This protein also belongs to a subfamily of RGS proteins characterized by the presence of DEP and GGL domains, the latter a G beta 5-interacting domain. The RGS proteins negatively regulate G protein signaling, and may modulate neuronal, cardiovascular, lymphocytic activities, and cancer risk. Many alternatively spliced transcript variants encoding different isoforms with long or short N-terminal domains, complete or incomplete GGL domains, and distinct C-terminal domains, have been described for this gene, however, the full-length nature of some of these variants is not known.[provided by RefSeq, Mar 2011]