

Product datasheet for **RG211159**

PCDHA9 (NM_031857) Human Tagged ORF Clone

Product data:

Product Type:	Expression Plasmids
Product Name:	PCDHA9 (NM_031857) Human Tagged ORF Clone
Tag:	TurboGFP
Symbol:	PCDHA9
Synonyms:	PCDH-ALPHA9
Mammalian Cell Selection:	Neomycin
Vector:	pCMV6-AC-GFP (PS100010)
E. coli Selection:	Ampicillin (100 ug/mL)



[View online »](#)

ORF Nucleotide
Sequence:

>RG211159 representing NM_031857
 Red=Cloning site Blue=ORF Green=Tags(s)

TTTTGTAATACGACTCACTATAGGGCGGCCGGGAATTCGTCGACTGGATCCGGTACCGAGGAGATCTGCC
 GCC**CGGATCGCC**

ATGTTATACTCAAGTCGAGGAGATCCAGAGGGTACGCTCTACTGCTCTCGTTCTGATCCTCGCAATGT
 GGGTGGTGGGAGCGGCCAGCTCCTACTCTCCGTCGCCGAGGAAGCCGAACACGGCACCTTCGTGGGCCG
 CATCGCGCAGGACCTGGGGCTGGAGCTGGCGGAGCTGGTGCCGCGCTGTCCAGTTGGATTCCAAGGC
 CGCGGGGACCTTCTGGAGGTAATCTGCAGAATGGCATTGTTGTTGTGAATTCTCGGATCGACCGGAGG
 AGCTGTGCGGGCGGAGCGGAGTGCAGCATCCACCTGGAGGTGATCGTAGACAGGCCGCTGCAGGTTTT
 CCATGTGGACGTGGAGGTGAAGGACATTAACGACAACCTCCAGTGTCCAGCGACACAAAAGAATCTG
 TTCATCGCGGAATCCAGGCCGCTGACTCTCGGTTTCCACTAGAGGGCGCGTCCGATGCAGATATCGGGG
 AGAACGCCCTGCTCACTACAGACTGAGCCCAATGAGTATTTCTTCTGGACGTGCCAACCAGCAACCA
 GCAGGTAACCTCTGGACTTGTATTACGAAACTTTTAGACAGAGAAGAACTCCGGAGCTTCATTTA
 TTGCTCACGGCCACCGATGGAGGCAAACCCGAGCTGACTGGCACCGTTCAATTACTCATCACGGTACTGG
 ACAACAATGACAATGCCCAAGTGTTCGACAGAACCCTGTATACGGTGAAATTACCAGAAAACGTTTCTAT
 CGGAACGCTGGTATTACCCCAATGCCTCAGATTTAGACGAAGGCTTGAATGGGGATATATTTACTCC
 TTCTCCAGTGATGTTTCTCCAGATATAAAATCCAAGTTCACATGGACCCCTTAAGTGGGGCAATCACAG
 TGATAGGACATATGGATTTTGAAGAAAGTAGAGCACACAAGATCCAGTCGAGGCTGTCGATAAAGGCTT
 CCCACCCCTGGCTGGTCAATTGTACACTTCTGTGGAAGTTGTGGATGTAATGACAATGCTCCACAGTTG
 ACTATCAAACGCTCTCGGTTCTGTAAAAGAGGACGCACAACCTGGGACAGTTATTGCCCTGATTAGTG
 TGATCGACCTAGACGAGATGCCAACGGCAGGTTACCTGCTCCGACGCCCCACGTCCCCTCAAGT
 GGTGTCCACCTACAAGAATTACTACTCGTTGGTGTGGACAGAGCTCTGGACCGGAGAGTGTGTCGCGC
 TACGAGCTGGTGGTTACCGCGGGGACGGGGCTCGCCTTCACTGTGGGCCACGGCCAGGGTGTCTGTGG
 AGGTGGCCGACGTGAACGACAACGCACCAGCGTTCGCGCAGTCCGAGTACACGGTTCGTGAAGGAGAA
 CAACCCGCGGGCTGCCACATCTTACGGTGTCTGCGCGGACGCTGACGCGCAGGAGAACGCCCTGGT
 TCCTACTCGTGGTGGAGCGGGTGGGGCAGCGCTCGCTGTCGAGCTACGTGTGACGCGGAGGAG
 GCGGCAAGGTGTACGCGCTGCAGCCGTTGGACCAGGAGCTGGAGCTGCTACAGTTCCAGGTGAGCGC
 GCGCGACGCGGGCTGCCGCTCTGGGCAGCAACGTGACGCTGCAGGTGTTCTGCTGGACGAGAACGAC
 AATGCGCCGGCGCTGCTGACACCTCGGATGAGGGGCACTGACGGCGCAGTGAGCGAGATGGTGTGCGGT
 CGGTGGGCGCGCGGTAGTGGTGGGGAAGGTGCGCGCAGTGGACGCCACTCGGGCTACAACGCGTGGCT
 TTCATACGAGCTGCAGCCAGAAACGGCCAGCGGAGCATCCCCTTCCGCGTGGGGCTGTACACGGGCGAG
 ATCAGCACAACGCGTGCCTGGACGAAACGGACGCACCAGCGCCAGCGCCTACTGGTGTGGTGAAGACC
 ACGGGGAGCCAGCGCTGACGGCCACGGCCACTGTGCTGGTGTGCTGGTGGAGAGCGGCCAGGCGCCAAA
 GTCATCGTCGCGGGCGTCACTGGGTGCCACGGGCCCGAGGTGACGCTGGTGGATGTCAACGTGTACCTG
 ATCATCGCCATCTGCGCGGTGTCTAGCCTGTTGGTTCTCACGCTGCTGCTGTACACTGTGCTGCGGTGCT
 CGGCGATGCCACCGAGGGCGAGTGCAGCCTGGCAAGCCGACGCTGGTGTGTTCTAGCGCGTGGGGAG
 TTGGTCTACTCGCAGCAGAGGAGGAGGAGGTTGCTCTGGCGAGGGTAAGCAGAAGACCGACCTCATG
 GCCTTCAGCCCGGCCTTCTCCTTGTGCTGGATCTACAGAGCGAACGGGAGAACCCTCTGCTTCTCAG
 ATTCAACTGGGAAGCCACGACAGCCCAACCCTGACTGGCGTACTCTGCCTCCCTGAGAGCAGGCATGCA
 CAGCTCTGTGCACCTAGAGGAGGCTGGCATTCTACGGGCTGGTCCAGGAGGGCTGATCAGCAGTGGCCA
 ACAGTATCCAGTGCAACACCAGAACCAGAGGAGGAGAAGTGTCCCTCCAGTCGGTGGGGTGTCAACA
 GCAACAGCTGGACCTTAAATACGGACCAGGCAACCCCAAACAATCCGGTCCCGGTGAGTTGCCCGACAA
 ATTCATTATCCAGGATCTCCTGCAATCATCTCCATCCGGCAGGAGCCTACTAACAGCCAAATTGACAAA
 AGTGACTTCATAACCTTCGGCAAAAAGGAGGAGACCAAGAAAAAGAAAAAGAAAGGGTAACAAGA
 CCCAGGAGAAAAAGAGAAAGGGAACAGCAGACTGACAACAGTGACCAG

AG**CGGACCG**ACGCGTACGCGGCCGCTCGAG - GFP Tag - GTTTAA

Protein Sequence: >RG211159 representing NM_031857
 Red=Cloning site Green=Tags(s)

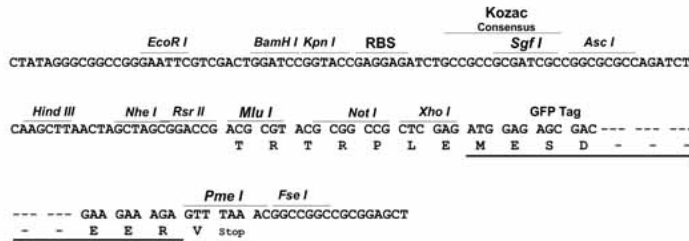
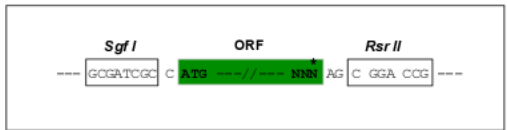
MLYSSRGDPEGQPLLLSLLILAMWVVGSGQLHYSVPPEAEHGTFVGRIAQDLGLELAELVPRLFQLDSKG
 RGDLLLEVLQNGILFVNSRIDREELCGRSAECSIHLEVI VDRPLQVFHVDVEVKDINDNPPVFPATQKNL
 FIAESRPLDSRFPLEGASDADIGENALLTYRLSPNEYFFLDVPTSNQQVKPLGLVLRKLLDREETPELHL
 LLTATDGGKPEL TGTVQLLITVLDNNDNAPVFDRTLYTVKLPENVSIGTLVIHPNASDLDEGLNGDIIYS
 FSSDVSPDIKSKFHMDPLSGAITVIGHMDFEESRAHKIPVEAVDKGFPLAGHCTLLVEVVDVNDNAPQL
 TIKTLSVPVKEDAQLGTVIALISVIDLDADANGQVTCSLTPHVPFKLVSTYKNYYSLVLDRALDRESVSA
 YELVVTARDGGSPSLWATARVSVVADVNDNAPAFQSEYTVFVKENPPGCHIFTVSARDADAQENALV
 SYSLVERRLGERLSSYVSVHAESGKVYALQPLDHEELELLQFQVSARDAGVPLGSNVTLQVFLDEND
 NAPALLTPMRGTDGAVSEMVLRSVGAGVVVGKVRADVADSGYNLAWL SYELQPETASASIPFRVGLYTGE
 ISTTRALDETDAPRQLLVLVKDHGEPALTATATVLSLVESGQAPKSSSRASVGTGPEVTLVDVNVYL
 IIAICAVSLLVLTLLLYTVLRCSAMPTEGECAPGKPTLVCSAVGWSYSQRRQRVCSEGGKQKTDLM
 AFSPLGPCAGSTERTGEPSSSDSTGKPRQPNPDWRYSASLRAGMHSSVHLEEAGILRAGPGGPDQWP
 TVSSATPEPEAGEVSPPVGAGVNSNSWTFKYGPNPKQSGPGELPKDFIIPGSPAIISIRQPTNSQIDK
 SDFITFGKKEETKKKKKKKKGNKTQEKKEKGNSTTDNSDQ

SGPTRRRLE - GFP Tag - V

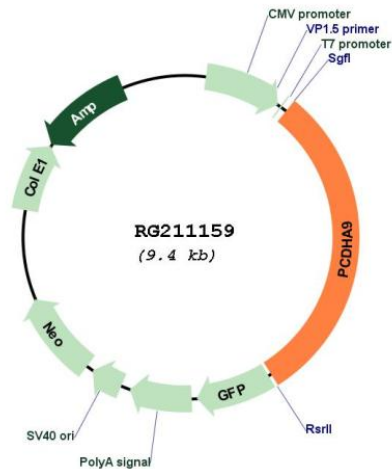
Restriction Sites: SgfI-RsrII

Cloning Scheme:

Cloning sites used for ORF Shuttling:



Plasmid Map:



ACCN: NM_031857

ORF Size: 2850 bp

OTI Disclaimer: The molecular sequence of this clone aligns with the gene accession number as a point of reference only. However, individual transcript sequences of the same gene can differ through naturally occurring variations (e.g. polymorphisms), each with its own valid existence. This clone is substantially in agreement with the reference, but a complete review of all prevailing variants is recommended prior to use. [More info](#)

OTI Annotation: This clone was engineered to express the complete ORF with an expression tag. Expression varies depending on the nature of the gene.

Components: The ORF clone is ion-exchange column purified and shipped in a 2D barcoded Matrix tube containing 10ug of transfection-ready, dried plasmid DNA (reconstitute with 100 ul of water).

Reconstitution Method:

1. Centrifuge at 5,000xg for 5min.
2. Carefully open the tube and add 100ul of sterile water to dissolve the DNA.
3. Close the tube and incubate for 10 minutes at room temperature.
4. Briefly vortex the tube and then do a quick spin (less than 5000xg) to concentrate the liquid at the bottom.
5. Store the suspended plasmid at -20°C. The DNA is stable for at least one year from date of shipping when stored at -20°C.

RefSeq: [NM_031857.2](#)

RefSeq Size: 5984 bp

RefSeq ORF: 2853 bp

Locus ID: 9752

UniProt ID: [Q9Y5H5](#)

Cytogenetics: 5q31.3

Domains: CA

Protein Families: Druggable Genome, Transmembrane

Gene Summary: This gene is a member of the protocadherin alpha gene cluster, one of three related gene clusters tandemly linked on chromosome five that demonstrate an unusual genomic organization similar to that of B-cell and T-cell receptor gene clusters. The alpha gene cluster is composed of 15 cadherin superfamily genes related to the mouse CNR genes and consists of 13 highly similar and 2 more distantly related coding sequences. The tandem array of 15 N-terminal exons, or variable exons, are followed by downstream C-terminal exons, or constant exons, which are shared by all genes in the cluster. The large, uninterrupted N-terminal exons each encode six cadherin ectodomains while the C-terminal exons encode the cytoplasmic domain. These neural cadherin-like cell adhesion proteins are integral plasma membrane proteins that most likely play a critical role in the establishment and function of specific cell-cell connections in the brain. Alternative splicing has been observed and additional variants have been suggested but their full-length nature has yet to be determined. [provided by RefSeq, Jul 2008]