

Product datasheet for **RG211158**

EHD1 (NM_006795) Human Tagged ORF Clone

Product data:

Product Type:	Expression Plasmids
Product Name:	EHD1 (NM_006795) Human Tagged ORF Clone
Tag:	TurboGFP
Symbol:	EHD1
Synonyms:	H-PAST; HPAST1; PAST; PAST1
Mammalian Cell Selection:	Neomycin
Vector:	pCMV6-AC-GFP (PS100010)
E. coli Selection:	Ampicillin (100 ug/mL)



[View online »](#)

ORF Nucleotide Sequence:

>RG211158 representing NM_006795
 Red=Cloning site Blue=ORF Green=Tags(s)

TTTTGTAATACGACTCACTATAGGGCGGCCGGGAATTCGTCGACTGGATCCGGTACCGAGGAGATCTGCC
 GCC**CGGATCGCC**

ATGTTTCACTGGGTGAGCAAGGATGCCCGCCGAAGAAGGAGCCGGAGCTCTCCAGACGGTGGCCGAGG
 GGCTGCGGCAGCTGTACGCGCAGAAGCTGCTACCCCTGGAGGAGCACTACCGCTTCCACGAGTTCCACTC
 GCCCGCGCTGGAGGACGCTGACTTCGACAACAAGCCTATGGTGTCTCTCGTGGGGCAGTACAGCAGGGC
 AAGACCACCTTATCCGACACCTGATCGAGCAGGACTTCCCGGGGATGCGCATCGGGCCCCAGCCACCA
 CCGACTCTTTCATCGCCGTATGCACGGCCCCACTGAGGGCGTGGTCCCGGGCAACGCGCTCGTGGTGA
 CCCGCGGCCCCCTTCCGCAAGCTCAACCGCTTGGCAACGCTTCTCAACAGGTTTATGTGTGCCAG
 CTGCCAACCCCGTCTGGACAGCATCAGCATCATCGACACCCCGGGATCCTGTCTGGAGAGAAGCAGC
 GGATCAGCAGAGGCTATGACTTTGCAGCCGTCTGGAGTGGTTCGCGGAGCGTGTGGACCGCATCATCT
 GCTCTTCGACGCCACAAGCTGGACATCTCCGATGAGTCTCGGAAGTATCAAGGCTCTGAAGAACCAT
 GAGGACAAGATCCGCGTGGTGTGAACAAGGCAGACCAGATCGAGACGCAGCAGCTGATCGCGGTGTACC
 GGGCCCTCATGTGGTCCCTGGGCAAGATCATCAACACCCCGAGGTGGTCAAGGCTCTACATCGGCTCCTT
 CTGGTCCCACCCGCTCCTCATCCCCGACAACCGCAAGCTCTTTGAGGCCGAGGAGCAGGACCTCTTCAAG
 GACATCCAGTCACTGCCCGAAACGCCGCCCTCAGGAAGCTCAATGACCTGATCAAGCGGCACGGCTGG
 CCAAGGTTACGCCTACATCATCAGTCCCTCAAGAAAGAGATGCCCAATGTCTTTGGTAAAGAGAGCAA
 AAAGAAAGAGCTGGTGAACAACCTGGGAGAGATCTACCAGAAGATTGAGCGCGAGCACCAGATCTCCCT
 GGGGACTTCCCGAGCCTCCGCAAGATGCAGGAACCTCTGCAGACCCAGGACTTCAAGAAAGTCCAGGCGC
 TGAAGCCCAAGCTGTGGACACGGTGGATGACATGCTGGCCAACGACATCGCGCGGCTGATGGTGTGGT
 GCGGCAGGAGGATCCCTGATGCCTTCCAGGTGGTCAAGGGCGGCGCCTTTGACGGCACCATGAACGGG
 CCGTTCGGGCACGGCTACGGCGAGGGGGCCGGCAGGGCATCGACGACGTGGAGTGGTGGTGGGAAGG
 ACAAGCCACCTACGACGAGATCTTCTACACGCTGTCCCCTGTCAACGGCAAGATCACGGGCGCCAACGC
 CAAGAAGGAGATGGTGAAGTCCAAGCTCCCAACACCGTCTAGGGAAGATCTGGAAGCTGGCCGACGTG
 GACAAGGACGGGCTGCTGGACGACGAGGAGTTCGCGCTGGCCAACCACCTCATCAAGGTCAAGCTGGAGG
 GCCACGAGCTGCCCGCCGACCTGCCCGCACCTGGTCCCGCCCTCAAGCGCAGACATGAG

AG**CGGACCG**ACGCGTACGCGGCCGCTCGAG - GFP Tag - GTTTAA

Protein Sequence:

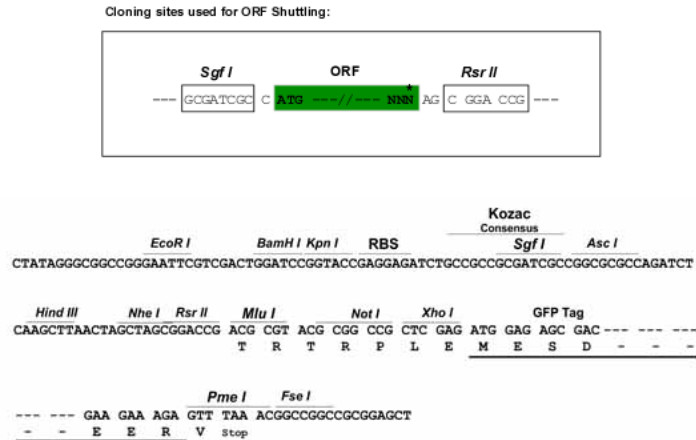
>RG211158 representing NM_006795
 Red=Cloning site Green=Tags(s)

MFSWVSKDARRKKEPELFQTVAEGLRQLYAQKLLPLEEHYRFHEFHSPALEDADFDNKPMVLLVGQYSTG
 KTTFFIRHLIEQDFPGMRIGPEPTTDSFIIVMHGPTTEGVVPGNALVVDPRRPFKLNFAFGNAFLNRFMCAQ
 LPNPVLDISISIIDTPGILSGEKQRISRGYDFAAVLEWFAERVDRIILLFDAHKLDISDEFSEVIKALKNH
 EDKIRVVLNKADQIETQQLMRVYGALMWSLGIINTPEVVRVYIGSFWSHPLLIPDNRKLFEEAEQDLFK
 DIQSLPRNAALRKLNDLIKRARLAKVHAYIISLKKEMPNVFGKESKKELVNNLGEIYQKIEREHQISP
 GDFPSLRKMQELLQTQDFSKFQALKPKLLDVTDDMLANDIARLMVMVRQEESLMPSQVVKGGAFDGTMNG
 PFGHGYGEGAGEGIDDVEWVVGDKPTYDEIFYTLSPVNGKITGANAKKEMVKSPLPNTVLGKIWKLADV
 DKDGLLDDEEFALANHLIKVKLEGHLPADLPHLVPPSKRRHE

SGP**TRRRLE** - GFP Tag - V

Restriction Sites:

Sgfl-RsrII

Cloning Scheme:


ACCN: NM_006795

ORF Size: 1602 bp

OTI Disclaimer: Due to the inherent nature of this plasmid, standard methods to replicate additional amounts of DNA in E. coli are highly likely to result in mutations and/or rearrangements. Therefore, OriGene does not guarantee the capability to replicate this plasmid DNA. Additional amounts of DNA can be purchased from OriGene with batch-specific, full-sequence verification at a reduced cost. Please contact our customer care team at custsupport@origene.com or by calling 301.340.3188 option 3 for pricing and delivery.

The molecular sequence of this clone aligns with the gene accession number as a point of reference only. However, individual transcript sequences of the same gene can differ through naturally occurring variations (e.g. polymorphisms), each with its own valid existence. This clone is substantially in agreement with the reference, but a complete review of all prevailing variants is recommended prior to use. [More info](#)

OTI Annotation: This clone was engineered to express the complete ORF with an expression tag. Expression varies depending on the nature of the gene.

Components: The ORF clone is ion-exchange column purified and shipped in a 2D barcoded Matrix tube containing 10ug of transfection-ready, dried plasmid DNA (reconstitute with 100 ul of water).

Reconstitution Method:

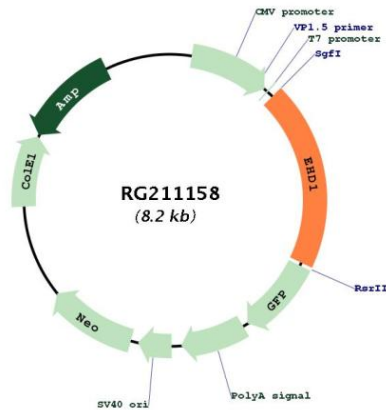
1. Centrifuge at 5,000xg for 5min.
2. Carefully open the tube and add 100ul of sterile water to dissolve the DNA.
3. Close the tube and incubate for 10 minutes at room temperature.
4. Briefly vortex the tube and then do a quick spin (less than 5000xg) to concentrate the liquid at the bottom.
5. Store the suspended plasmid at -20°C. The DNA is stable for at least one year from date of shipping when stored at -20°C.

RefSeq: [NM_006795.3](#)

RefSeq Size: 3482 bp
 RefSeq ORF: 1605 bp
 Locus ID: 10938
 UniProt ID: [Q9H4M9](#)
 Cytogenetics: 11q13.1
 Domains: EH, EFh
 Protein Families: Druggable Genome
 Protein Pathways: Endocytosis
 Gene Summary:

This gene belongs to a highly conserved gene family encoding EPS15 homology (EH) domain-containing proteins. The protein-binding EH domain was first noted in EPS15, a substrate for the epidermal growth factor receptor. The EH domain has been shown to be an important motif in proteins involved in protein-protein interactions and in intracellular sorting. The protein encoded by this gene is thought to play a role in the endocytosis of IGF1 receptors. Alternatively spliced transcript variants have been found for this gene. [provided by RefSeq, Sep 2013]

Product images:



Circular map for RG211158