

Product datasheet for **RG211140**

EGR3 (NM_004430) Human Tagged ORF Clone

Product data:

Product Type: Expression Plasmids
Product Name: EGR3 (NM_004430) Human Tagged ORF Clone
Tag: TurboGFP
Symbol: EGR3
Synonyms: EGR-3; PILOT
Mammalian Cell Selection: Neomycin
Vector: pCMV6-AC-GFP (PS100010)
E. coli Selection: Ampicillin (100 ug/mL)
ORF Nucleotide Sequence: >RG211140 representing NM_004430
Red=Cloning site Blue=ORF Green=Tags(s)

TTTTGTAATACGACTCACTATAGGGCGGCCGGAATTCGTCGACTGGATCCGGTACCGAGGAGATCTGCC
GCC**CGATCGCC**

ATGACCGGCAAACCTCGCCGAGAAGCTGCCGGTGACCATGAGCAGTTTGCTAAACCAACTGCCTGACAATC
TGTACCCCGAGGAGATCCCAGCGCGCTCAACCTCTTCTCCGGCAGCAGCGACTCGGTAGTCCATTACAA
TCAGATGGCTACAGAGAATGTAATGGACATCGGTCTGACCAACGAGAAGCCCAACCCGGAACCTCTTAC
TCCGGCTCCTTCCAGCCAGCCCCGGCAACAAGACCGTGACCTACTTGGGAAAGTTGCCTTCGACTCCC
CTTCCAACCTGGTCCAGGACAACATCATTAGCCTCATGAGCGCCGCATCTTGGGGTGCCCCGGCTTC
AGGGGCGCTCAGCACGCAGACGTCCACGGCCAGCATGGTGCAGCCACCGAGGGTGACGTGGAGGCCATG
TATCCCGCGCTACCCCCCTACTCCAACCTGCGGGCAGCTCTACTCAGAGCCCGTGTCTTCCACGACCCCC
AGGGCAATCCCAGGCTCGCTATCCCCCAGGATTACCAATCGGCCAAGCCGGGTTGGACAGCAATCT
CTTCCCCATGATTCTGACTACAACCTCTACCACCACCCCAACGACATGGGCTCCATTCCGGAGCACAAG
CCCTTCCAGGGCATGGACCCATCCGGGTCAACCCGCCCCCTATTACCCCTCTGGAGACCATCAAGGCAT
TCAAAGACAAGCAGATCCACCCGGGCTTGGCAGCCTGCCACGCGCCGCTCACCTCAAGCCATCCG
GCCCGCAAGTACCCCAACCGGCTAGCAAGACACCGCTCCACGAACGGCCCCACGCGTGCCTGGCCGAG
GGCTGCGACCGCGTTTCAGCCGTTTCGGACGAGCTGACCCGGCACCTGCCATCCACGGGCCACAAGC
CCTTCCAGTGCCGGATTCGATGCGGAGCTTTCAGCCGACGAGCACCTACCACCTCACATCCGCACTCA
TACGGGCGAGAAGCCCTTTCCTGCGAGTTCTGCGGGCGCAAGTTTTCGCGCAGCGACGAGCGCAAGCGC
CACGCCAAGATCCACCTCAAGCAAAAGGAGAAGAAGGCGGAGAAGGGCGGTGCACCCTCTGCATCTCGG
CGCCCCCGTGTCTGCTGGCCCCGTGGTACCACCTGCGCC

AGCGGACCGACCGGTACGCGGCCGCTCGAG - GFP Tag - GTTTAA



[View online »](#)

Protein Sequence: >RG211140 representing NM_004430
 Red=Cloning site Green=Tags(s)

MTGKLAEKLPVTMSSLLNQLPDNLYPEEIPSAIENLFGSSSDSVVHYNQMATENVMDIGLTNEKPNPELSY
 SGSFQAPAGNKVTYLGKFAFDSPSNWCQDNIISLMSAGILGVPPASGALSTQTSTASMVQPPQGDVEAM
 YPALPPYSNCGDLYSEPVSFHDPQGNPLGLAYSPQDYQSAPALDSNLFPMPDYNLYHHPNDMGSIPEHK
 PFQGMDFIRVNPPPIITPLETIKAFKDKQIHPGFGSLPQPPLTLKPIRPRKYPNRPSTPLHERPHACPAE
 GCDRRFSRSDDELTRHLRIHTGHKPFQCRICMRSFSRSDHLTTHIRTHTGEKPFACEFCGRKFARSDERKR
 HAKIHLKQKEKKAEGGAPSASSAPPVSLAPVVTCA

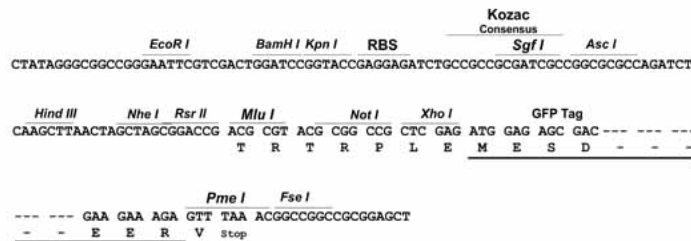
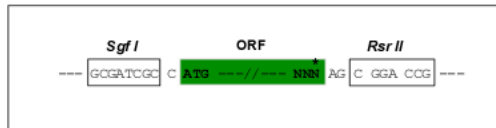
SGPTRRRLE - GFP Tag - V

Restriction Sites:

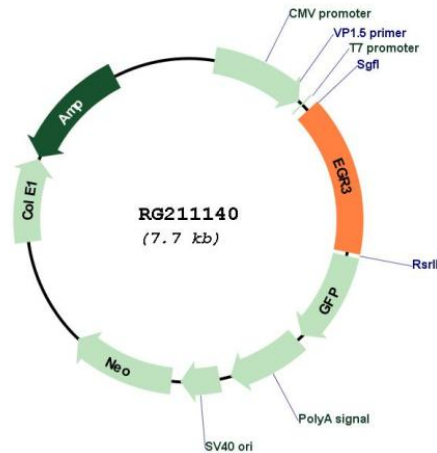
Sgfl-RsrII

Cloning Scheme:

Cloning sites used for ORF Shuttling:



Plasmid Map:



ACCN:

NM_004430

ORF Size:	1161 bp
OTI Disclaimer:	<p>Due to the inherent nature of this plasmid, standard methods to replicate additional amounts of DNA in E. coli are highly likely to result in mutations and/or rearrangements. Therefore, OriGene does not guarantee the capability to replicate this plasmid DNA. Additional amounts of DNA can be purchased from OriGene with batch-specific, full-sequence verification at a reduced cost. Please contact our customer care team at custsupport@origene.com or by calling 301.340.3188 option 3 for pricing and delivery.</p> <p>The molecular sequence of this clone aligns with the gene accession number as a point of reference only. However, individual transcript sequences of the same gene can differ through naturally occurring variations (e.g. polymorphisms), each with its own valid existence. This clone is substantially in agreement with the reference, but a complete review of all prevailing variants is recommended prior to use. More info</p>
OTI Annotation:	This clone was engineered to express the complete ORF with an expression tag. Expression varies depending on the nature of the gene.
Components:	The ORF clone is ion-exchange column purified and shipped in a 2D barcoded Matrix tube containing 10ug of transfection-ready, dried plasmid DNA (reconstitute with 100 ul of water).
Reconstitution Method:	<ol style="list-style-type: none"> 1. Centrifuge at 5,000xg for 5min. 2. Carefully open the tube and add 100ul of sterile water to dissolve the DNA. 3. Close the tube and incubate for 10 minutes at room temperature. 4. Briefly vortex the tube and then do a quick spin (less than 5000xg) to concentrate the liquid at the bottom. 5. Store the suspended plasmid at -20°C. The DNA is stable for at least one year from date of shipping when stored at -20°C.
RefSeq:	NM_004430.3
RefSeq Size:	4342 bp
RefSeq ORF:	1164 bp
Locus ID:	1960
UniProt ID:	Q06889
Cytogenetics:	8p21.3
Gene Summary:	<p>This gene encodes a transcriptional regulator that belongs to the EGR family of C2H2-type zinc-finger proteins. It is an immediate-early growth response gene which is induced by mitogenic stimulation. The protein encoded by this gene participates in the transcriptional regulation of genes in controlling biological rhythm. It may also play a role in a wide variety of processes including muscle development, lymphocyte development, endothelial cell growth and migration, and neuronal development. Alternative splicing results in multiple transcript variants encoding distinct isoforms.[provided by RefSeq, Dec 2010]</p>