

Product datasheet for **RG211111**

NLRX1 (NM_024618) Human Tagged ORF Clone

Product data:

Product Type:	Expression Plasmids
Product Name:	NLRX1 (NM_024618) Human Tagged ORF Clone
Tag:	TurboGFP
Symbol:	NLRX1
Synonyms:	CLR11.3; DLNB26; NOD5; NOD9; NOD26
Mammalian Cell Selection:	Neomycin
Vector:	pCMV6-AC-GFP (PS100010)
E. coli Selection:	Ampicillin (100 ug/mL)



[View online »](#)

ORF Nucleotide Sequence:

>RG211111 representing NM_024618
 Red=Cloning site Blue=ORF Green=Tags(s)

TTTTGTAATACGACTCACTATAGGGCGGCCGGGAATTCGTCGACTGGATCCGGTACCGAGGAGATCTGCC
 GCC**GCGATCGCC**

ATGAGGTGGGGCCACCATTGCCCAGGGCCTCTGGGGCTCTGGTTTTAGAAGAGCACTCCAGCGACCAG
 ATGATCGTATCCCTTCCTGATCCACTGGAGTTGGCCCTTCAAGGGGAGCGTCCCTTTGGGCCCTTAG
 GGCTTTATACGCCACCACGGAAGCTCGGTAGATAGCGCTCCCCACCCGGGAGGCATGGACGGCTGTT
 CCCAGCGCCTCTGCAACTGAAGCTATACAGCGCACCCGCCGAACCTGGCTGAGTGGTTCAGCCGGCTGC
 CCAGGGAGGAGCGCCAGTTTGGCCCAACCTTGGCCTAGACACGGTCCACGTTGACCCTGTGATCCGCGA
 GAGTACCCTGATGAGCTACTTCGCCACCCCGGGAGCTGGCCCTGGAGCATCAGCCACCCAGGCCGGG
 CTCCTCCACTGGCCTTGTCTCAGCTCTTAACCCGGATGCTGTGGGCGCCGGTGCAGACAGTGGTGC
 TGTATGGGACAGTGGGCACAGGCAAGAGCACGCTGGTGGCAAGATGGTCTGGACTGGTGTATGGGCG
 GCTGCCGGCCTTCGAGCTGCTCATCCCTTCTCCTGTGAGGACCTGTCATCCCTGGGCCCTGCCACGCC
 TCCTGTGCCAACTTGTGGCCACGCGCTACACGCCCTGAAGGAGTTCTGCCCTGATGGCTGCTGCTG
 GGTCACCTCCTCTTTGTGCTCCATGGCTTAGAGCATCTCAACCTCGACTTCCGGCTGGCAGGCACGGG
 ACTTTGTAGTGACCCGGAGGAACCGCAGGAACAGCTGCTATCATCGTCAACCTGCTGCGCAATACATG
 CTGCCTCAGGCCAGCATTCTGGTGACCACTCGGCCCTCTGCCATTGGCCGTATCCCAGCAAGTACGTGG
 GCCGTATGGTGAGATCTGCGGTTTCTCTGATACCAACCTGCAGAAGCTCTACTTCCAGCTCCGCCTCAA
 CCAGCCGTAAGTGGGATGCGGTTTGGCGGTTGAGGTGTCTGTCCACACCAGCTCAGCGTGACCACCTG
 GTGCAGATGCTCTCCCGAACCTGGAGGGGCACCACAGATAGCCGCTGCCTGCTTCTGCCGCTCATT
 GCTGGCTCGTTTGTGCCACCTTGCACTTCTGCACTGCCCCACGCTGCTGGGCAGACCTTACAAGCAT
 CTATACCAGCTTCTGCGCTCAACTTCAGCGGGAAACCTGGACAGCACTGACCCCTCAATTTGTCC
 CTGATGGCCTATGCAGCCGAACCATGGCAAGTTGGCCTATGAGGGGGTGTCTCCCGCAAGACCTACT
 TCTCTGAAGAGGATGTCTGTGGCTGCCTGGAGGCTGGCATCAGGACGGAGGAGGAGTTTTCAGCTGTGCA
 CATCTTCCGTGCGGATGCCCTGAGGTTTTTCTGGCCCATGTGTGGAGCCAGGGCGTGCAGGCACCTTC
 GTGTTACCGTGCCCGCCATGCAGGAATACCTGGCTGCCCTCTACATTGTGCTGGGTTTGCAGCAAGCGA
 CCCTGCAAAGGTGGGCAAGGAAGTGGCTGAGCTCGTGGCCGTGTTGGGAGGAGCTCAGCCTGGTACT
 GGGCATCATGGCCAAGCTGCTGCCTCTGCGGGCTCTGCCTCTGCTTCAACCTGATCAAGTGGTTCGA
 CGAGTGTGGGCGCATGGTGGTAAAAGCCGGGAGGCGGTGGCTCAGGCCATGGTGTGGAGATGTTTC
 GAGAGGAGGACTACTACAACGATGATGTTCTGGACCAGATGGGCGCCAGTATCCTGGGCGTGGAGGGCC
 CCGGCGCCACCCAGATGAGCCCCCTGAGGATGAAGTCTTCGAGCTTCCCCATGTTTATGGGGGGCTT
 CTCTGCCCCACAACCGAGCTGTGCTAGCTCAGCTTGGCTGCCCATCAAGAACCTGGATGCCCTGGAGA
 ATGCCCAGGCCATCAAGAAGAAGCTGGGCAAGCTGGGCGGCAGGTGCTGCCCATCAGAGCTCCTTGA
 CCACCTCTTCCACTATGAGTTCAGAACAGCGCTTCTCCGCTGAGGTGCTCAGCTCCCTGCGTCAG
 CTCAACCTGGCAGGTGTGCGCATGACACCAGTCAAGTGCACAGTGGTGGCAGCTGTGCTGGGCGAGGAA
 GGCATGCCCTGGATGAGGTGAACCTGGCCTCTGCCAGCTAGATCCTGCTGGGCTGCGCACACTCCTGCC
 TGTCTTCCGTGCGTCCCGAAGCTGGGTTGCAACTCAACAGCCTGGGCCCTGAGGCTGCAAGGACCTC
 CGAGACCTGTTGCTGCATGACCAGTGCCAAATTACCACACTGCGGCTGTCCAACAACCCGCTGACGGCGG
 CAGGTGTTGCCGTGCTAATGAGGGGCTGGCAGGAAACCTCAGTGACGCACCTGTCCCTGCTGCACAC
 GGGCCTTGGGACGAAGGCTGGAGCTGTGGCTGCCAGCTGGACCGCAACCGGACGCTGCAGGAGCTG
 AACGTGGCGTACAACGGTGTGGTACACAGCGGCCCTGGCCCTGGCCAGAGCTGCCCGGAGCACCCCTT
 CCCTGGAAGTGTACACCTCTACTTCAATGAGCTGAGCTCAGAGGGCCGCCAGGTCTTGCAGACTTGGG
 GGGTGTGCTGAAGTGGTGGCCGGTGGTGGTGTCACTGACAGAGGGGACGGCGGTGTCAGAATACTGG
 TCAGTGATCCTCAGTGAAGTCCAGCGAACCTCAATAGCTGGGATCGGGCCGGGTTTCAGCGACACCTTG
 AGCTCCTACTGCGGGATCTGGAAGATAGCCGGGTGCCACCTTAATCCTTGGCGCAAGGCCAGCTGCT
 GCGAGTGGAGGGGAGGTGAGGGCCCTCTGGAGCAGCTGGGAAGCTCTGGAAGC

ACGCGTACGCGGCCGCTCGAG - GFP Tag - GTTTAA

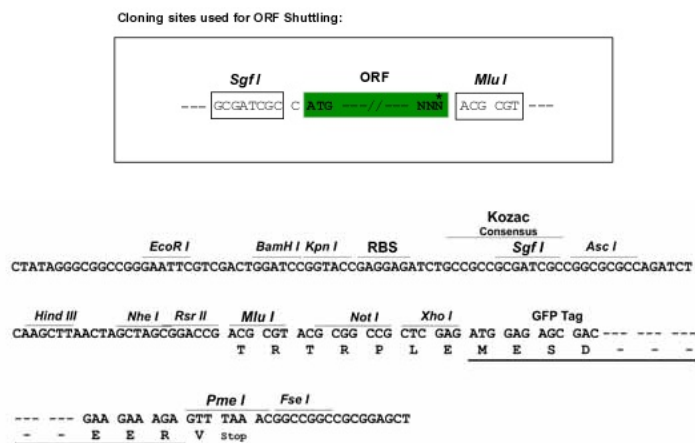
Protein Sequence: >RG211111 representing NM_024618
 Red=Cloning site Green=Tags(s)

MRWGHHLPRASWGSFRRALQRPDDRIPFLIHWSWPLQGERPFGPPRAFIRHHGSSVDSAPPPGRHGRLF
 PSASATEAIQRHRRNLAEFWSRLPREERQFGPTFALDVTVHVPVIRESTPDELLRPPAELALEHQPPQAG
 LPPLALSQLFNPDACGRRVQTVVLYGTVGTGKSTLVRKMVLWCYGRLPAFELLIPFSCEDLSSLGPAPA
 SLCQLVAQRYTPLKEVLPMAAAGSHLLFVLHGLEHLNLDLDFRLAGTGLCSDEPEEQEPAIIVNLLRKYM
 LPQASILVTTRPSAIGRIPSKYVGRYGEICGFSDTNLQKLYFQLRLNQPYCGYAVGSGSVSATPAQRDHL
 VQMLSRNLEGHQIAAACFLPSYCWLVCATLHFLHAPTPAGQTLTSIYTSFLRLNFSGETLDSTDPNLS
 LMAYAARTMGKLAYEGVSSRKTYFSEEDVCGCLEAGIRTEEEFQLLHIFRRDALRFFLAPCPEPGRAGTF
 VFTVPAMQEYLAALYIVLGLRKTTLQKVGKEVAELVGRVGEDVSLVVGIMAKLLPLRALPLLNLKVVV
 RVFGRMVGKSREAVAQAMVLEMFREEDYNDVLDQMGASILGVEGPRRHPDEPPEDEVFELPFMFMGGL
 LSAHNRAVLAQLGCPKIKNLDALENAQAIAKKLGLGRQVLPSELLDHLFFHYEQNRQSAEVLSSLRQ
 LNLAGVRMTPVKCTVVAAVLGSGRHALDEVNLASCQLDPAGLRLLPVFLRARKLGLQLNSLGPEACKDL
 RDLLLLHDQCQITTLRLSNNPLTAAGVAVLMEGLAGNTSVTHLSLLHTGLGDEGLELLAAQLDRNRQLQEL
 NVAYNGAGDTAALALARAAREHPSLELLHLYFNELSSEGRQVLRDLGAAEAGGARVVVSLTEGTAVSEYM
 SVILSEVQRNLNSWDRARVQRHLELLLRLDLEDSRGATLNPWRKAQLLRVEGEVRALLEQLGSSGS

TRTRPLE - GFP Tag - V

Restriction Sites: SgfI-MluI

Cloning Scheme:

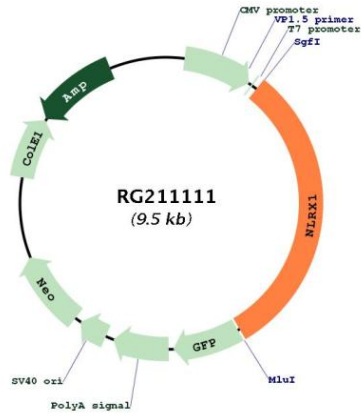


ACCN: NM_024618

ORF Size: 2925 bp

OTI Disclaimer:	The molecular sequence of this clone aligns with the gene accession number as a point of reference only. However, individual transcript sequences of the same gene can differ through naturally occurring variations (e.g. polymorphisms), each with its own valid existence. This clone is substantially in agreement with the reference, but a complete review of all prevailing variants is recommended prior to use. More info
OTI Annotation:	This clone was engineered to express the complete ORF with an expression tag. Expression varies depending on the nature of the gene.
Components:	The ORF clone is ion-exchange column purified and shipped in a 2D barcoded Matrix tube containing 10ug of transfection-ready, dried plasmid DNA (reconstitute with 100 ul of water).
Reconstitution Method:	<ol style="list-style-type: none"> 1. Centrifuge at 5,000xg for 5min. 2. Carefully open the tube and add 100ul of sterile water to dissolve the DNA. 3. Close the tube and incubate for 10 minutes at room temperature. 4. Briefly vortex the tube and then do a quick spin (less than 5000xg) to concentrate the liquid at the bottom. 5. Store the suspended plasmid at -20°C. The DNA is stable for at least one year from date of shipping when stored at -20°C.
RefSeq:	NM_024618.4
RefSeq Size:	3761 bp
RefSeq ORF:	2928 bp
Locus ID:	79671
UniProt ID:	Q86UT6
Cytogenetics:	11q23.3
Domains:	LRR, LRR_RI
Protein Pathways:	RIG-I-like receptor signaling pathway
Gene Summary:	The protein encoded by this gene is a member of the NLR family and localizes to the outer mitochondrial membrane. The encoded protein is a regulator of mitochondrial antiviral responses. Three transcript variants encoding the same protein have been found for this gene. [provided by RefSeq, Aug 2013]

Product images:



Circular map for RG211111