

Product datasheet for **RG211110**

CDYL (NM_170751) Human Tagged ORF Clone

Product data:

| | |
|---------------------------|---|
| Product Type: | Expression Plasmids |
| Product Name: | CDYL (NM_170751) Human Tagged ORF Clone |
| Tag: | TurboGFP |
| Symbol: | CDYL |
| Synonyms: | CDYL1, MGC131936, DKFZp586C1622 |
| Mammalian Cell Selection: | Neomycin |
| Vector: | pCMV6-AC-GFP (PS100010) |
| E. coli Selection: | Ampicillin (100 ug/mL) |



[View online »](#)

ORF Nucleotide Sequence:

>RG211110 representing NM_170751
 Red=Cloning site Blue=ORF Green=Tags(s)

TTTTGTAATACGACTCACTATAGGGCGGCCGGAATTCGTCGACTGGATCCGGTACCGAGGAGATCTGCC
 GCC**CGGATCGCC**

ATGGCTTCGAGGAGCTGTACGAGTTGAAAGGATTGTTGACAAAAGGAAAAATAAAAAAGGAAGACAG
 AGTATTTGGTTCCGTGGAAAGGCTATGACAGCGAGGACGACACTTGGGAGCCGGAACAGCACCTCGTGAA
 CTGTGAGGAATACATCCACGACTTCAACAGACGCCACACGGAGAAGCAGAAGGAGAGCACATTGACCAGA
 ACAAACAGGACCTCTCCCAACAATGCTAGGAAACAAATCTCCAGATCCACCAACAGCAACTTTTCTAAGA
 CCTCTCTAAGGCACTCGTGATTGGGAAAGACCACGAATCCAAAAACAGCCAGCTGTTTGTGCCAGCCA
 GAAGTTCAGGAAGAACACAGCTCCATCTCTCCAGCCGGAAGAACATGGACCTAGCGAAGTCAGGTATC
 AAGATCCTCGTCCTAAAAGCCCCGTTAAGAGCAGGACCCGAGTGGACGGCTTTCAGAGCGAGAGCCCTG
 AGAACTGGACCCCGTCGAGCAGGGT CAGGAGGACACAGTGGCACCCGAAGTGGCAGCGGAAAAGCCGGT
 CGGAGCTTTATTGGGCCCGGTGCCGAGAGGGCCAGGATGGGGAGCAGGCCAGGATACACCCACTAGTG
 CCTCAGGTGCCCGCCCTGTGACTGCAGCCATGGCCACAGGCTTAGCTGTTAACGGGAAAGGTACATCTC
 CGTTCATGGATGCATTAACAGCCAATGGGACAACCAACATACAGACATCTGTTACAGGAGTGACTGCCAG
 CAAAAGGAAATTTATTGACGACAGAAGAGACCAGCCTTTTGACAAGCGATTGCGTTTCAGCGTGAGGCAA
 ACAGAAAGTGCCTACAGATACAGAGATATTGTGGTCAGGAAGCAGGATGGCTTCACCCACATCTTGTAT
 CCACAAAGTCTCAGAGAATAACTCACTAAATCCAGAGGTAATGAGAGAAGTCCAGAGTGCCTGAGCAC
 GGCCGCTGCCGATGACAGCAAGCTGGTACTGCTCAGCGCCGTTGGCAGCGTCTTCTGTTGTGGACTTGAC
 TTTATTTATTTATACGACGCTGACAGATGACAGGAAAAGAGAAAGCACTAAAAATGGCAGAGCTATCA
 GAAACTCGTGAATACTTTCATTAATTAAGAAGCCATTATTGTAGCAGTCAATGGCCAGCCATTGG
 TCTAGGACATCTATATTGCCTCTTGGCATGTGGTTTGGCTAATGAAAAGGCTTGGTTTCAAACACC
 TATACCACCTTCGACAGAGTCCAGATGGCTGTTCTACCGTTATGTTTCCAAGATAATGGGAGGAGCAT
 CTGCAAACGAGATGCTGCTCAGTGGACGGAAGCTGACAGCGCAGGAGGCGTGTGGCAAGGCCTGCTC
 CCAGGTGTTTTGGCCGGGACGTTCACTCAGGAAGTGATGGTTCGCATTAAGGAGCTTGCCTCGTCAAT
 CCAGTTGTGCTTGAGGAATCCAAAGCCCTCGTGCCTGCAACATGAAGATGGAGCTGGAGCAGGCCAACG
 AGAGGGAGTGTGAGGTGCTGAAGAAAATCTGGGGCTCGGCCAGGGGATGGACTCCATGTTAAAGTACTT
 GCAGAGGAAGATCGATGAGTTC

ACGCGTACGCGGCCGCTCGAG – GFP Tag – GTTTAA

Protein Sequence:

>RG211110 representing NM_170751
 Red=Cloning site Green=Tags(s)

MASEELYEVEIRIVDKRKNKKGKTEYLVRWKGYSDEDDTWEPEQHLVNCEEYIHFNRHTEKQKESTLTR
 TNRTSPNNARKQISRSTNSNFSKTSKALVIGKDHE SKNSQLFAASQKFRKNTAPSLSSRKNMDLAKSGI
 KILVPKSPVKSRTAVDGFQSESPEKLDPVEQGGEDTVAPEVAAEKVPGALLGPGAERARMGSRPRIHPLV
 PQVPGPVTAAMATGLAVNGKGTSPFMDALTANGTTNIQTSVTGVTASKRKFIDRRDQPFDKRLRF SVRQ
 TESAYRYRDIVVRKQDGFTHILLSTKSENNSLNPEVMREVQSALSTAAADDSKLVLLSAVGSVFCGLD
 FIYFIRRLTDDRKRETKMAEAI RNFNVTFIQFKKPIIVAVNGPAIGLGASILPLCDVVWANEKAWFQTP
 YTTFGQSPDGCSTVMFPKIMGGASANEMLLSGRKLTAQEACGKGLVSQVFWPGTFQEVVMVRIKELASCN
 PVVLEESKALVRCNMKMELEQANERECEVLKKIWGSAQGMDSMLKYLQRKIDEF

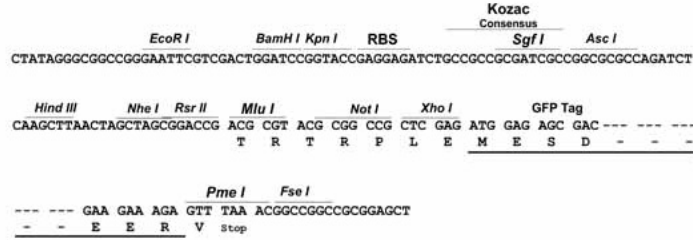
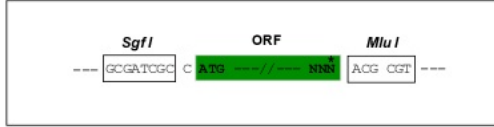
TRTRPLE – GFP Tag – V

Restriction Sites:

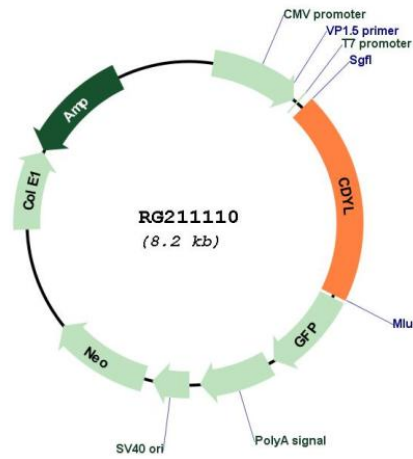
Sgfl-Mlul

Cloning Scheme:

Cloning sites used for ORF Shutting:



Plasmid Map:



| | |
|-------------------------------|--|
| ACCN: | NM_170751 |
| ORF Size: | 1632 bp |
| OTI Disclaimer: | The molecular sequence of this clone aligns with the gene accession number as a point of reference only. However, individual transcript sequences of the same gene can differ through naturally occurring variations (e.g. polymorphisms), each with its own valid existence. This clone is substantially in agreement with the reference, but a complete review of all prevailing variants is recommended prior to use. More info |
| OTI Annotation: | This clone was engineered to express the complete ORF with an expression tag. Expression varies depending on the nature of the gene. |
| Components: | The ORF clone is ion-exchange column purified and shipped in a 2D barcoded Matrix tube containing 10ug of transfection-ready, dried plasmid DNA (reconstitute with 100 ul of water). |
| Reconstitution Method: | <ol style="list-style-type: none">1. Centrifuge at 5,000xg for 5min.2. Carefully open the tube and add 100ul of sterile water to dissolve the DNA.3. Close the tube and incubate for 10 minutes at room temperature.4. Briefly vortex the tube and then do a quick spin (less than 5000xg) to concentrate the liquid at the bottom.5. Store the suspended plasmid at -20°C. The DNA is stable for at least one year from date of shipping when stored at -20°C. |
| RefSeq: | NM_170751.1 , NP_736607.1 |
| RefSeq Size: | 3474 bp |
| RefSeq ORF: | 1634 bp |
| Locus ID: | 9425 |
| Cytogenetics: | 6p25.1 |
| Gene Summary: | Chromodomain Y is a primate-specific Y-chromosomal gene family expressed exclusively in the testis and implicated in infertility. Although the Y-linked genes are testis-specific, this autosomal gene is ubiquitously expressed. The Y-linked genes arose by retrotransposition of an mRNA from this gene, followed by amplification of the retroposed gene. Proteins encoded by this gene superfamily possess a chromodomain, a motif implicated in chromatin binding and gene suppression, and a catalytic domain believed to be involved in histone acetylation. Multiple proteins are encoded by transcript variants of this gene. [provided by RefSeq, Jul 2008] |