

## Product datasheet for **RG211092**

### SUMF1 (NM\_182760) Human Tagged ORF Clone

#### Product data:

|                           |   |
|---------------------------|---|
| Product Type:             | Expression Plasmids   |
| Product Name:             | SUMF1 (NM_182760) Human Tagged ORF Clone                                    |
| Tag:                      | TurboGFP  |
| Symbol:                   | SUMF1   |
| Synonyms:                 | AAPA3037; FGE; UNQ3037  |
| Mammalian Cell Selection: | Neomycin  |
| Vector:                   | pCMV6-AC-GFP (PS100010)   |
| E. coli Selection:        | Ampicillin (100 ug/mL)  |
| ORF Nucleotide Sequence:  | >RG211092 representing NM_182760<br>Red=Cloning site Blue=ORF Green=Tags(s) |

TTTTGTAATACGACTCACTATAGGGCGGCCGGAATTCGTCGACTGGATCCGGTACCGAGGAGATCTGCC  
GCC**CGATCGCC**

ATGGCTGCGCCCGCACTAGGGCTGGTGTGTGGACGTTGCCCTGAGCTGGGTCTCGTCTCTTGTCTGCTGC  
TGCTCTCGCTGTGTGGAGCGGCAGGGAGCCAGGAGGCCGGGACCGGTGCGGGCGGGGTCCCTTGC  
GGGTTCTTGGCGCTGCGGCACGCCCCAGCGCCTGGCGCCATGGCAGTTCGGCAGCCGCTCACCGATAC  
TCGCGGGAGGCTAACGCTCCGGGCCCGTACCCGGAGAGCGGCAACTCGCGCACTCAAAGATGGTCCCCA  
TCCCTGCTGGAGTATTTACAATGGGCACAGATGATCCTCAGATAAAGCAGGATGGGAAGCACCTGCGAG  
GAGAGTTACTATTGATGCCTTTACATGGATGCCTATGAAGTCAGTAATACTGAATTTGAGAAGTTGTG  
AACTCAACTGGCTATTTGACAGAGGCTGAGAAATTTGGCGACTCCTTTGTCTTTGAAGGCATGTTGAGTG  
AGCAAGTGAAGACCAATATTCAACAGGCAGTTGCAGCTGCTCCCTGGTGGTTACCTGTGAAAGGCCTAA  
CTGGAGACACCCAGAAGGGCCTGACTCTACTATTCTGCACAGGCCGGATCATCCAGTTCTCCATGTGTCC  
TGGAAATGATGCGGTTGCCTACTGCACTTGGGCAGGGAAGCGGCTGCCACGGAAGCTGAGTGGGAATACA  
GCTGTGAGGAGGCGCTGCATAATAGACTTTTCCCTGGGCAACAACACTGCAGCCCAAAGGCCAGCATT  
TGCCAACATTTGGCAGGGCGAGTTTCCGGTGACCAACTGGTGGAGGATGGCTTCCAAGGAAGTGGCCT  
GTTGATGCCTTCCCTCCCAATGGTTATGGCTTATACAACATAGTGGGAACGCATGGGAATGGACTTCAG  
ACTGGTGGACTGTTTATCTGTTGAAGAAACGCTTAACCCAAAAGGTCCCTTCTGGGAAAGACCG  
AGTGAAGAAAGGTGGATCTACATGTGCCATAGTCTTATTGTTACAGGTATCGTGTGCTGCTCGGAGC  
CAGAACACACCTGATAGCTCTGCTTGAATCTGGGATTCGCTGTGCAGCCGACCGCCTGCCACTATGG  
AC

**ACGCGT**ACGCGGCCGCTCGAG - GFP Tag - GTTTAA



[View online »](#)

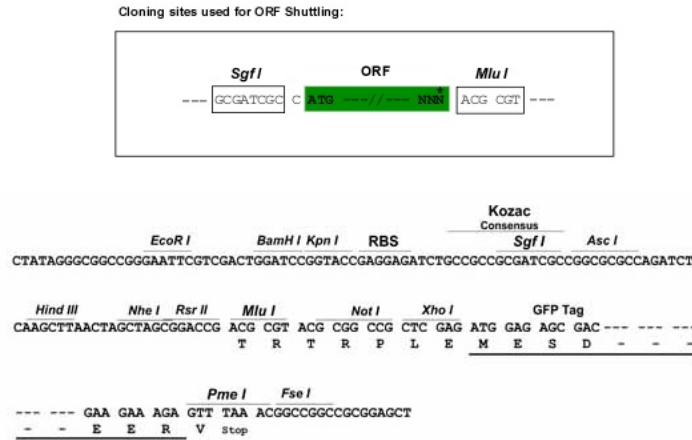
**Protein Sequence:** >RG211092 representing NM\_182760  
Red=Cloning site Green=Tags(s)

MAAPALGLVCGRCPELGLVLLLLLLSLLCGAAGSQEAGTGAGAGSLAGSCGCGTQPQPGAHGSSAAAHRY  
 SREANAPGPVPPERQLAHSKMVPVIPAGVFTMGTDPPQIKQDGEAPARRVTIDAFYMDAYEVSNTFEKFKV  
 NSTGYL TEAEKFGDSFVFEGMLSEQVKTNIQQAVAAAPWWLPVKGANWRHPEGPDSTILHRPDHPVLHVS  
 WNDAVAYCTWAGKRLPTEAEWEYSCRGG LHNRLF PWGNKLPKQGHYANIWQGEFPVTNTGEDGFQGTAP  
 VDAFPNGYGLYNI VGN AEWETSDWWT VHHSVEETL NPKGPPSGKDRVKKGG SYMCHR SYCYRYRCAARS  
 QNTPDSSASNLGFRCAADRLPTMD

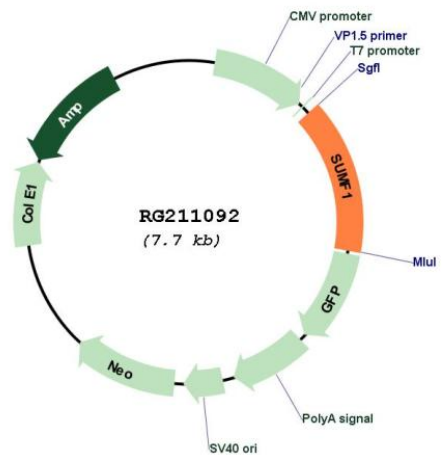
TRTRPLE - GFP Tag - V

**Restriction Sites:** SgfI-MluI

**Cloning Scheme:**



**Plasmid Map:**



**ACCN:** NM\_182760

|                               |  |
|-------------------------------|--|
| <b>ORF Size:</b>              | 1122 bp  |
| <b>OTI Disclaimer:</b>        | <p>Due to the inherent nature of this plasmid, standard methods to replicate additional amounts of DNA in E. coli are highly likely to result in mutations and/or rearrangements. Therefore, OriGene does not guarantee the capability to replicate this plasmid DNA. Additional amounts of DNA can be purchased from OriGene with batch-specific, full-sequence verification at a reduced cost. Please contact our customer care team at <a href="mailto:custsupport@origene.com">custsupport@origene.com</a> or by calling 301.340.3188 option 3 for pricing and delivery.</p> <p>The molecular sequence of this clone aligns with the gene accession number as a point of reference only. However, individual transcript sequences of the same gene can differ through naturally occurring variations (e.g. polymorphisms), each with its own valid existence. This clone is substantially in agreement with the reference, but a complete review of all prevailing variants is recommended prior to use. <a href="#">More info</a></p> |
| <b>OTI Annotation:</b>        | This clone was engineered to express the complete ORF with an expression tag. Expression varies depending on the nature of the gene.   |
| <b>Components:</b>            | The ORF clone is ion-exchange column purified and shipped in a 2D barcoded Matrix tube containing 10ug of transfection-ready, dried plasmid DNA (reconstitute with 100 ul of water).   |
| <b>Reconstitution Method:</b> | <ol style="list-style-type: none"><li>1. Centrifuge at 5,000xg for 5min.</li><li>2. Carefully open the tube and add 100ul of sterile water to dissolve the DNA.</li><li>3. Close the tube and incubate for 10 minutes at room temperature.</li><li>4. Briefly vortex the tube and then do a quick spin (less than 5000xg) to concentrate the liquid at the bottom.</li><li>5. Store the suspended plasmid at -20°C. The DNA is stable for at least one year from date of shipping when stored at -20°C.</li></ol>  |
| <b>RefSeq:</b>                | <a href="#">NM_182760.4</a>  |
| <b>RefSeq Size:</b>           | 2148 bp  |
| <b>RefSeq ORF:</b>            | 1125 bp  |
| <b>Locus ID:</b>              | 285362   |
| <b>UniProt ID:</b>            | <a href="#">Q8NBK3</a>   |
| <b>Cytogenetics:</b>          | 3p26.1   |
| <b>Gene Summary:</b>          | <p>This gene encodes an enzyme that catalyzes the hydrolysis of sulfate esters by oxidizing a cysteine residue in the substrate sulfatase to an active site 3-oxoalanine residue, which is also known as C-alpha-formylglycine. Mutations in this gene cause multiple sulfatase deficiency, a lysosomal storage disorder. Alternative splicing results in multiple transcript variants. [provided by RefSeq, Sep 2009]</p>   |