

Product datasheet for **RG211072**

GPR177 (WLS) (NM_024911) Human Tagged ORF Clone

Product data:

Product Type:	Expression Plasmids
Product Name:	GPR177 (WLS) (NM_024911) Human Tagged ORF Clone
Tag:	TurboGFP
Symbol:	GPR177
Synonyms:	C1orf139; EVI; GPR177; mig-14; MRP
Mammalian Cell Selection:	Neomycin
Vector:	pCMV6-AC-GFP (PS100010)
E. coli Selection:	Ampicillin (100 ug/mL)



[View online »](#)

ORF Nucleotide Sequence:

>RG211072 representing NM_024911
 Red=Cloning site Blue=ORF Green=Tags(s)

TTTTGTAATACGACTCACTATAGGGCGGCCGGAATTCGTCGACTGGATCCGGTACCGAGGAGATCTGCC
 GCC**CGGATCGCC**

ATGGCTGGGGCAATTATAGAAAACATGAGCACCAAGAAGCTGTGCATTGTTGGTGGGATTCTGCTCGTGT
 TCCAAATCATCGCTTTCTGGTGGGAGGCTTGATTGCTCCAGGGCCACACACGGCAGTGTCTACATGTC
 GGTGAAATGTGTGGATGCCCGTAAGAACCATCACAAAGACAAAATGGTTCGTGCCTTGGGGACCCAATCAT
 TGTGACAAGATCCGAGACATTGAAGAGGCAATCCAAGGGAAAATTGAAGCCAATGACATCGTGTCTTCTG
 TTCACATTTCCCTCCCCACATGGAGATGAGTCTTGGTTCCAATTCATGCTGTTTATCCTGCAGCTGGA
 CATTGCCTTCAAGCTAAACAACCAAAATCAGAGAAAATGCAGAAGTCTCCATGGACGTTTCCCTGGCTTAC
 CGTGATGACGCATTTGCTGAGTGGACTGAAATGGCCCATGAAAGAGTACCACGGAAACTCAAATGCACCT
 TCACATCTCCAAGACTCCAGAGCATGAGGGCCGTTACTATGAATGTGATGTCCTTCTTTTCATGAAAAT
 TGGGTCTGTGGCCATAAGTTTTACCTTTAAACATCCGGCTGCCTGTGAATGAGAAGAAGAAAATCAAT
 GTGGGAATTGGGGAGATAAAGGATATCCGGTGGTGGGGATCCACCAAAATGGAGGCTTCAACAAGGTGT
 GTTTTGCCATGAAGACCTTCTTACGCCAGCATCTTCATCATTATGGTGTGGTATTGGAGGAGGATCAC
 CATGATGTCCCGACCCCAAGTGTCTTGGAAAAAGTCACTTTGCCCTTGGGATTTCCATGACCTTTATC
 AATATCCAGTGGAAATGGTTTTCCATCGGGTTGACTGGACCTGGATGCTGCTGTTTGGTACATCCGAC
 AGGGCATCTTCTATGCGATGCTTCTGTCCTTCTGGATCATCTTCTGTGGCGAGCACATGATGGATCAGCA
 CGAGCGGAACCACATCGCAGGGTATTGGAAGCAAGTGGACCCATTGCCGTTGGCTCCTTCTGCCTCTTC
 ATATTTGACATGTGTGAGAGAGGGGTACAACACGAAATCCCTTCTACAGTATCTGGACTACAGACATTG
 GAACAGAGCTGGCCATGGCTTTCATCATCTGGTGGAAATCGCTCTGCCTCTACTTCTGTTTTCTATG
 CTTTCATGGTATTTTCAGGTGTTTCGGAACATCAGTGGGAAGCAGTCCAGCCTGCCAGCTATGAGCAAAGTC
 CGGCGGCTACACTATGAGGGGCTAATTTTTAGGTTCAAGTTCTCATGCTTATCACCTTGGCCTGCGCTG
 CCATGACTGTCATCTTCTCATCGTTAGTCAGGTAACGGAAGGCCATTGGAAATGGGGCGGCGTCACAGT
 CCAAGTGAACAGTGCCTTTTTACAGGCATCTATGGGATGTGGAATCTGTATGCTTTGCTCTGATGTTT
 TTGTATGCACCATCCCATAAAACTATGGAGAAGACCAGTCCAATGGCGATCTGGGTGCCATAGTGGGG
 AAGAACTCCAGCTCACCACCACTATCACCATGTGGACGGACCCACTGAGATCTACAAGTTGACCCGCAA
 GGAGGCCCAGGAG

AG**CGGACCG**ACGCGTACGCGGCCGCTCGAG - GFP Tag - GTTTAA

Protein Sequence:

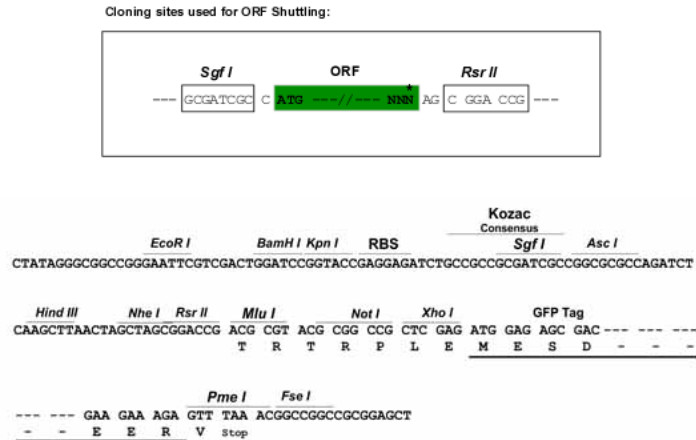
>RG211072 representing NM_024911
 Red=Cloning site Green=Tags(s)

MAGAIENMSTKKLCIVGGILLVFQIIAFLVGLIAPGPTTAVSYMSVKVDARKNHHKTKWFVPWGPNH
 CDKIRDIEEAIIPREIEANDIVFSVHIPLPHMEMSPWFQFMLFILQLDIAFKLNNQIRENAEVSMDVSLAY
 RDDAFAEWTEMAHERVPRKTKFTSPKPEHEGRYYECDVLPFMEIGSVAHKFYLLNIRLPVNEKKKIN
 VGIGEIKDIRLVGIHQNGGFTKVVFAFKTFLTPSIFIIIMVWYRRITMMSRPPVLEKIVIFALGISMTFI
 NIPVEWFSIGFDWTWMLLFGDIRQGIIFYAMLLSFWIIFCGEHMMDQHERNHIAGYWKQVGPVAVGSFCLF
 IFDMCERGVQLTNPFYIWTDDIGTELAMAFIIIVAGICLCLYFLFLCFMVFQVFRNISGKQSSLPAMSKV
 RRLHYEGLIFRFKFLMLITLACAAMTVIFFIVSQVTEGHWKWGGVTVQVNSAFFTGIYGMWNLYVFALMF
 LYAPSHKNYGEDQSNGLGVHSGEELQLTTTITHVDGPTEIYKLTRKEAQE

SGP**TRRRLE** - GFP Tag - V

Restriction Sites:

Sgfl-RsrII

Cloning Scheme:


ACCN: NM_024911

ORF Size: 1623 bp

OTI Disclaimer: Due to the inherent nature of this plasmid, standard methods to replicate additional amounts of DNA in E. coli are highly likely to result in mutations and/or rearrangements. Therefore, OriGene does not guarantee the capability to replicate this plasmid DNA. Additional amounts of DNA can be purchased from OriGene with batch-specific, full-sequence verification at a reduced cost. Please contact our customer care team at custsupport@origene.com or by calling 301.340.3188 option 3 for pricing and delivery.

The molecular sequence of this clone aligns with the gene accession number as a point of reference only. However, individual transcript sequences of the same gene can differ through naturally occurring variations (e.g. polymorphisms), each with its own valid existence. This clone is substantially in agreement with the reference, but a complete review of all prevailing variants is recommended prior to use. [More info](#)

OTI Annotation: This clone was engineered to express the complete ORF with an expression tag. Expression varies depending on the nature of the gene.

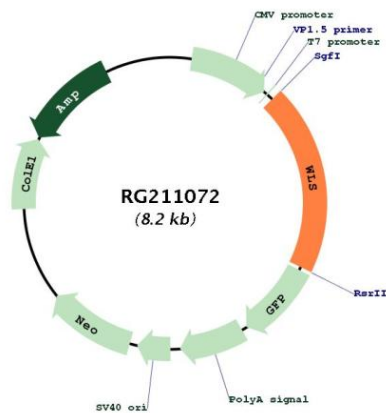
Components: The ORF clone is ion-exchange column purified and shipped in a 2D barcoded Matrix tube containing 10ug of transfection-ready, dried plasmid DNA (reconstitute with 100 ul of water).

- Reconstitution Method:**
1. Centrifuge at 5,000xg for 5min.
 2. Carefully open the tube and add 100ul of sterile water to dissolve the DNA.
 3. Close the tube and incubate for 10 minutes at room temperature.
 4. Briefly vortex the tube and then do a quick spin (less than 5000xg) to concentrate the liquid at the bottom.
 5. Store the suspended plasmid at -20°C. The DNA is stable for at least one year from date of shipping when stored at -20°C.

RefSeq: [NM_024911.4, NP_079187.3](#)
RefSeq Size: 2767 bp
RefSeq ORF: 1626 bp
Locus ID: 79971
UniProt ID: [Q5T9L3](#)
Cytogenetics: 1p31.3
Protein Families: Transmembrane

Gene Summary: Regulates Wnt proteins sorting and secretion in a feedback regulatory mechanism. This reciprocal interaction plays a key role in the regulation of expression, subcellular location, binding and organelle-specific association of Wnt proteins. Plays also an important role in establishment of the anterior-posterior body axis formation during development (By similarity).[UniProtKB/Swiss-Prot Function]

Product images:



Circular map for RG211072