

## Product datasheet for **RG211066**

### **EPLIN (LIMA1) (NM\_016357) Human Tagged ORF Clone**

#### **Product data:**

Product Type:	Expression Plasmids
Product Name:	EPLIN (LIMA1) (NM_016357) Human Tagged ORF Clone
Tag:	TurboGFP
Symbol:	EPLIN
Synonyms:	EPLIN; LDLCQ8; SREBP3
Mammalian Cell Selection:	Neomycin
Vector:	pCMV6-AC-GFP (PS100010)
E. coli Selection:	Ampicillin (100 ug/mL)



[View online »](#)

**ORF Nucleotide Sequence:**

>RG211066 representing NM\_016357  
 Red=Cloning site Blue=ORF Green=Tags(s)

TTTTGTAATACGACTCACTATAGGGCGGCCGGGAATTCGTCGACTGGATCCGGTACCGAGGAGATCTGCC  
 GCC**CGCATCGCC**

ATGGAATCATCTCCATTTAATAGACGGCAATGGACCTCACTATCATTGAGGGTAACAGCCAAAGAACTTT  
 CTCTTGTCACAAAGAACAAGTCATCGGCTATTGTGGAAATATTCTCCAAGTACCAGAAAGCAGCTGAAGA  
 AACAAACATGGAGAAGAAGAGAAGTAACACCGAAAATCTCTCCAGCACTTTAGAAAGGGGACCCTGACT  
 GTGTTAAAGAAGAAGTGGGAGAACCAGGGCTGGGAGCAGAGTCTCACACAGACTCTCTACGGAACAGCA  
 GCACTGAGATTAGGCACAGAGCAGACCATCCTCTGCTGAAGTGACAAGCCACGCTGCTTCTGGAGCCAA  
 AGCTGACCAAGAAGAACAATCCACCCAGATCTAGACTCAGGTCACCTCCTGAAGCCCTCGTTCAGGGT  
 CGATATCCCACATCAAGGACGGTGAAGTCTAAAGACCACTCAACAGAAAAGTAAAAAATGGAAAATT  
 GTCTAGGAGAATCCAGGCATGAAGTAGAAAAATCAGAAATCAGTGA AACACAGATGCTTCGGGCAAAAT  
 AGAGAAAATAATGTTCCGCTGAACAGGCTTAAGATGATGTTTGAGAAAGGTGAACCAACTCAAATAAG  
 ATTCTCCGGGCCAAAGCCGAAGTGCAAGTGGAAGGAAGATCTCTGAAAACAGCTATTCTCTAGATGACC  
 TGGAAATAGGCCAGGTCAGTTGTCATCTTCTACATTTGACTCGGAGAAAAATGAGAGTAGACGAAATCT  
 GGAATTCACGCCTCTCAGAAACCTCTATAAAGGATCGAATGGCCAAGTACCAGGCAGCTGTGTCCAAA  
 CAAAGCAGCTCAACCAACTATACAAATGAGCTGAAAGCCAGTGGTGGCGAAATCAAAATTCATAAAATGG  
 AGCAAAAGGAGAATGTGCCCCAGGTCCTGAGGCTGCATCACCCATCAGGAAGGGGAAAAGATTCTGCG  
 AAATGAGAATAGCCTGGCAGTCCGTTCCACCCCTGCCGAAGTACTCCCGTGACTCCAGGTTAAGAGT  
 GAGGTTCAACAGCCTGTCCATCCAAGCCACTAAGTCCAGATTCAGAGCCTCCAGTCTTCTGAAAAGTT  
 TCCTCCCAAAGCAATGAAGAAGTTTCAGGCACCTGCAAGAGAGACCTGCGTGAATGTGAGAAGACAGT  
 CTATCCAATGGAGCGTCTCTGGCCAACCAAGCAGGTGTTTCACATCAGCTGCTTCCGTTGCTCCTATTGC  
 AACAACTCACTAGTCTAGGAACATATGCATCTTTACATGGAAGAATCTATTGTAAGCCTCACTTCAATC  
 AACTCTTTAAATCTAAGGGCAACTATGATGAAGGCTTTGGGCACAGACCACACAAGGATCTATGGGCAAG  
 CAAAAATGAAAACGAAGAGATTTTGGAGAGACCAGCCAGCTTGCAAAATGCAAGGGAGACCCCTCACAGC  
 CCAGGGGTAGAAGATGCCCTATTGCTAAGGTGGGTGCCTGGCTGCAAGTATGGAAGCCAAGGCCTCCT  
 CTCAGCAGGAGAAGGAAGACAAGCCAGCTGAAACCAAGAAGCTGAGGATCGCCTGGCCACCCCCACTGA  
 ACTTGAAGTTCAGGAAGTGCCTTGGAGGAAGGGATCAAAATGTCAAAGCCCAAATGGCCTCCTGAAGAC  
 GAAATCAGCAAGCCGAAGTTCCTGAGGATGTCGATCTAGATCTGAAGAAGCTAAGACGATCTTCTTCAC  
 TGAAGGAAAGAAGCCGCCATTCACTGTAGCAGCTTCATTTCAAAGCACCTCTGTCAAGAGCCCAAAAC  
 TGTGTCCCACTATCAGGAAAGGCTGGAGCATGTCAGAGCAGAGTGAAGAGTCTGTGGGTGGAAGAGTT  
 GCAGAAAGGAAACAAGTGGAAAATGCCAAGGCTTCTAAGAAGAATGGAAATGTGGGAAAAACAACCTGGC  
 AAAACAAGAATCTAAGGAGAGACAGGGAAGAGAAGTAAAGGAAGGTCATAGTTTGGAGATGGAGAATGA  
 GAATCTTGTAGAAAATGGTGCAGACTCCGATGAAGATGATAACAGCTTCTCAAACAACAATCTCCACAA  
 GAACCAAGTCTCTGAATTGGTCGAGTTTTGTAGACAACACCTTTGCTGAAGAATCACTACTCAGAATC  
 AGAAATCCAGGATGTGGAACCTGGGAGGGAGAAGTGGTCAAAGAGCTCTCTGTGGAAGAACAGATAAA  
 GAGAAATCGGTATTATGATGAGGATGAGGATGAAGAG

**ACGCGT**ACGCGGCCGCTCGAG - GFP Tag - GTTTAA

**Protein Sequence:** >RG211066 representing NM\_016357  
Red=Cloning site Green=Tags(s)

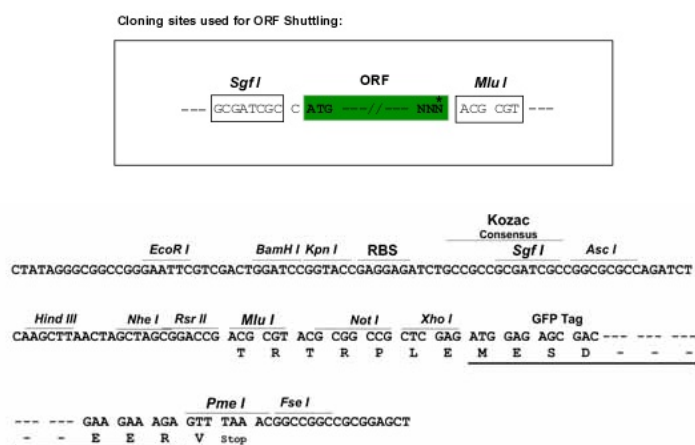
```

MESSPFNRRQWTSLSLRVTAKELSLVNKNKSSAIVEIFSKYQKAAEETNMEKKRSNTENLSQHFRKGLT
VLKKKWENPGLGAESHTDSLNRNSSTEIRHRADHPPAEVTSHAASGAKADQEEQIHPRSLRSPPEALVQG
RYPHIKDGEDLDKDHSTESKKMENCLGESRHEVEKSEISENTDASGKIEKYNVPLNRLKMMFEKGEPTQTK
ILRAQSRASGRKISENSYSLDDLEIGPQLSSSTFDSEKNESRRNLELPRLSETSIKDRMAKYQAAVSK
QSSSTNYTNELKASGGEIKIHKMEQKENVPPGPEVCITHQEGEKISANENSLAVRSTPAEDDSRDSQVKS
EVQQPVHPKPLSPDSRASSLSESSPPKAMKKFQAPARETCVECQKTVYPMERLLANQQVFHISCFRCSYC
NNKLSLGTYASLHGRIYCKPHFNQLFKSKGNYDEGFGHRPHKDLWASKNENEEILERPAQLANARETPHS
PGVEDAPIAKVGVLAASMEAKASSQKEKEDKPAETKKLRIAWPPPELGSSSGSALEEGIKMSKPKWPPED
EISKPEVPEDVDLDLKKLRRSSSLKERSRPFVAASFQSTSVKSPKTVSPPIRKGWSMSEQSEESVGGRV
AERKQVENAKASKKNGNVGKTTWQNKESKGETGKRSKEGHSLEMENENLVENGADSDDDNSFLKQQSPQ
EPKSLNWSFVDNTFAEEFTTQNKQSQDVELWEGEVVKELSVEEQIKRNRYYDEDEDEE
    
```

TRTRPLE - GFP Tag - V

**Restriction Sites:** SgfI-MluI

**Cloning Scheme:**



**ACCN:** NM\_016357

**ORF Size:** 2277 bp

**OTI Disclaimer:** The molecular sequence of this clone aligns with the gene accession number as a point of reference only. However, individual transcript sequences of the same gene can differ through naturally occurring variations (e.g. polymorphisms), each with its own valid existence. This clone is substantially in agreement with the reference, but a complete review of all prevailing variants is recommended prior to use. [More info](#)

**OTI Annotation:** This clone was engineered to express the complete ORF with an expression tag. Expression varies depending on the nature of the gene.

**Components:** The ORF clone is ion-exchange column purified and shipped in a 2D barcoded Matrix tube containing 10ug of transfection-ready, dried plasmid DNA (reconstitute with 100 ul of water).

**Reconstitution Method:**

1. Centrifuge at 5,000xg for 5min.
2. Carefully open the tube and add 100ul of sterile water to dissolve the DNA.
3. Close the tube and incubate for 10 minutes at room temperature.
4. Briefly vortex the tube and then do a quick spin (less than 5000xg) to concentrate the liquid at the bottom.
5. Store the suspended plasmid at -20°C. The DNA is stable for at least one year from date of shipping when stored at -20°C.

**RefSeq:** [NM\\_016357.5](#)

**RefSeq Size:** 3664 bp

**RefSeq ORF:** 2280 bp

**Locus ID:** 51474

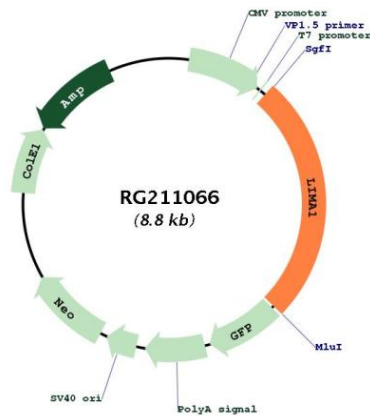
**UniProt ID:** [Q9UHB6](#)

**Cytogenetics:** 12q13.12

**Domains:** LIM

**Gene Summary:** This gene encodes a cytoskeleton-associated protein that inhibits actin filament depolymerization and cross-links filaments in bundles. It is downregulated in some cancer cell lines. Alternatively spliced transcript variants encoding different isoforms have been described for this gene, and expression of some of the variants maybe independently regulated. [provided by RefSeq, Aug 2011]

**Product images:**



Circular map for RG211066