

Product datasheet for **RG211039**

IL17C (NM_013278) Human Tagged ORF Clone

Product data:

Product Type:	Expression Plasmids
Product Name:	IL17C (NM_013278) Human Tagged ORF Clone
Tag:	TurboGFP
Symbol:	IL17C
Synonyms:	CX2; IL-17C
Mammalian Cell Selection:	Neomycin
Vector:	pCMV6-AC-GFP (PS100010)
E. coli Selection:	Ampicillin (100 ug/mL)
ORF Nucleotide Sequence:	>RG211039 representing NM_013278 Red=Cloning site Blue=ORF Green=Tags(s)

TTTTGTAATACGACTCACTATAGGGCGGCCGGAATTCGTCGACTGGATCCGGTACCGAGGAGATCTGCC
GCC**CGATCGCC**

ATGACGCTCCTCCCGGCTCCTGTTTCTGACCTGGCTGCACACATGCCTGGCCACCATGACCCCTCCC
TCAGGGGGCACCCCCACAGTCACGGTACCCACACTGCTACTCGGCTGAGGAAGTCCCTCGGCCAGGC
CCCCCACACCTGCTGGCTCGAGGTGCCAAGTGGGGCAGGCTTTCCTGTAGCCCTGGTGTCCAGCCTG
GAGGCAGCAAGCCACAGGGGAGGCACGAGAGGCCCTCAGCTACGACCCAGTGCCCGGTGCTGCGGCCGG
AGGAGGTGTTGGAGGCAGACACCACAGCGCTCCATCTCACCCTGGAGATACCGTGTGGACACGGATGA
GGACCGCTATCCACAGAAGCTGGCCTTCGCCGAGTGCCTGTGCAGAGGCTGTATCGATGCACGGACGGGC
CGCGAGACAGCTGCGCTCAACTCCGTGCGGCTGCTCCAGAGCCTGCTGGTGTGCGCCGCGGCCCTGCT
CCCGCGACGGCTCGGGGCTCCCCACACCTGGGGCCTTTCCTTCCACACCGAGTTCATCCAGTCCCCGT
CGGCTGCACCTGCGTGCTGCCCCGTTCACTG

ACGCGTACGCGGCCGCTCGAG - GFP Tag - GTTTAA

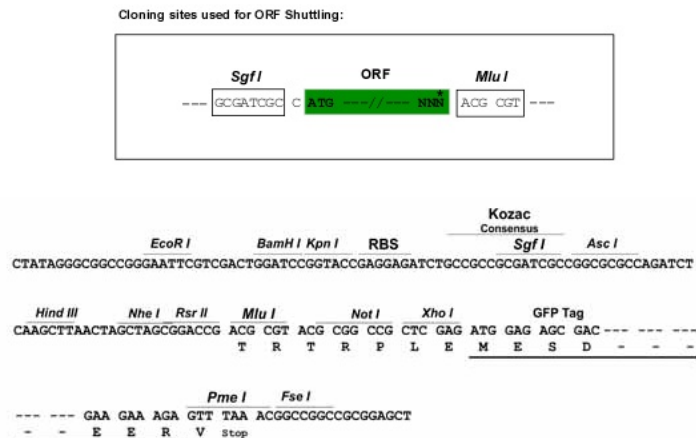
Protein Sequence:	>RG211039 representing NM_013278 Red=Cloning site Green=Tags(s)
-------------------	--

MTLLPGLLFLTWLHTCLAHHDPSLRGHPHSHGTPHCYSAEELPLGQAPPHLLARGAKWGQALPVALVSSL
EAASHRGRHERPSATTQCPVLRPEEVLEADTHQRSISPWRYRVDTEEDRYPQKLAFACELCRGCDARTG
RETAALNSVRLQLSLVLRPPSRDGSGLPTPGAFAFHTEFIHVPVGCTCVLPRSV

TRTRPLE - GFP Tag - V

Restriction Sites:	SgfI-MluI
--------------------	-----------


[View online »](#)

Cloning Scheme:


ACCN: NM_013278

ORF Size: 591 bp

OTI Disclaimer: The molecular sequence of this clone aligns with the gene accession number as a point of reference only. However, individual transcript sequences of the same gene can differ through naturally occurring variations (e.g. polymorphisms), each with its own valid existence. This clone is substantially in agreement with the reference, but a complete review of all prevailing variants is recommended prior to use. [More info](#)

OTI Annotation: This clone was engineered to express the complete ORF with an expression tag. Expression varies depending on the nature of the gene.

Components: The ORF clone is ion-exchange column purified and shipped in a 2D barcoded Matrix tube containing 10ug of transfection-ready, dried plasmid DNA (reconstitute with 100 ul of water).

Reconstitution Method:

1. Centrifuge at 5,000xg for 5min.
2. Carefully open the tube and add 100ul of sterile water to dissolve the DNA.
3. Close the tube and incubate for 10 minutes at room temperature.
4. Briefly vortex the tube and then do a quick spin (less than 5000xg) to concentrate the liquid at the bottom.
5. Store the suspended plasmid at -20°C. The DNA is stable for at least one year from date of shipping when stored at -20°C.

Note: Plasmids are not sterile. For experiments where strict sterility is required, filtration with 0.22um filter is required.

RefSeq: [NM_013278.4](#)

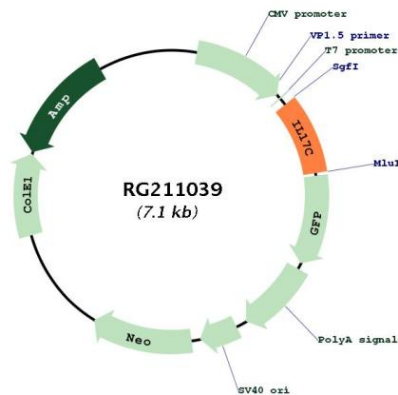
RefSeq Size: 1048 bp

RefSeq ORF: 594 bp

Locus ID: 27189

UniProt ID:	<u>Q9P0M4</u>
Cytogenetics:	16q24.2
Protein Families:	Druggable Genome, Secreted Protein
Gene Summary:	The protein encoded by this gene is a T cell-derived cytokine that shares the sequence similarity with IL17. This cytokine was reported to stimulate the release of tumor necrosis factor alpha and interleukin 1 beta from a monocytic cell line. The expression of this cytokine was found to be restricted to activated T cells. [provided by RefSeq, Jul 2008]

Product images:



Circular map for RG211039