

Product datasheet for **RG210990**

Attractin (ATRN) (NM_139322) Human Tagged ORF Clone

Product data:

Product Type:	Expression Plasmids
Product Name:	Attractin (ATRN) (NM_139322) Human Tagged ORF Clone
Tag:	TurboGFP
Symbol:	ATRN
Synonyms:	DPPT-L; MGCA
Mammalian Cell Selection:	Neomycin
Vector:	pCMV6-AC-GFP (PS100010)
E. coli Selection:	Ampicillin (100 ug/mL)
ORF Nucleotide Sequence:	>RG210990 representing NM_139322 Red=Cloning site Blue=ORF Green=Tags(s)

TTTTGTAATACGACTCACTATAGGGCGGCCGGAATTCGTCGACTGGATCCGGTACCGAGGAGATCTGCC
GCC**CGATCGCC**

ATGGTGGCTGCAGCGCGGCAACTGAGGCAAGGCTGAGGAGGAGGACGGCGGCGACGGCAGCGCTCGCGG
GCAGGAGCGGGCCGCACTGGGACTGGGACGTGACCAGGGCTGGGAGGCGGGGCTGGGGCCGGGCT
GCGCCTCCCGGGCTGCTGTCTCCACCGCTGCGGCCACGGCTGCTGCTGCTGTTGTTGCTCTCGCCG
CCGCTGCTGCTGCTGCTGCCCTGTGAGGCCGAGGCCCGCGCGGGCGGGCGGTGTCGGGCTCAG
CCGCAGCCGAGGCAAGGAATGTGACCGGCCCTGTGTCAACGGCGGTCGCTGCAACCCTGGCACCAGCCA
GTGCGTCTGCCCCGCGGCTGGGTGGGCGAGCAATGCCAGCACTGCGGGGCGCGTTCAGACTAACTGGA
TCTTCTGGGTTTGTGACAGATGGACCTGAAAATTATAAATACAAAACGAAGTGCACGTGGCTCATTGAAG
GACAGCCAAATAGAATAATGAGACTTCGTTTCAATCATTTTGTACAGAGTGTAGTTGGGACCATTATA
TGTTTATGATGGGGACTCAATTTATGCACCGCTAGTTGCTGCATTTAGTGGCCTCATTGTTCTGAGAGA
GATGGCAATGAGACTGTCCTGAGGTTGTTGCCACATCAGGTTATGCCTTGTGCATTTTTTTAGTGATG
CTGCTTATAATTTGACTGGATTTAATATTACTTACAGTTTTGATATGTGTCCAAATAACTGCTCAGGCCG
AGGAGAGTGTAAAGTACAGTAAAGCAGCGATACTGTTGAATGTGAATGTTCTGAAAACGGAAAGGTGAA
GCATGTGACATTCCTCACTGTACAGACAACGTGGTTTTTCTCATCGAGGCATGCAATCAAGTGATG
TCAGAGGATGCTCCTGCTTCTCAGACTGGCAGGGTCTGGATGTTCAAGTTCCTGTACCAGCTAACCCAGTC
ATTTTGGACTCGAGAGGAATATTCTAACTTAAAGCTCCCCAGAGCATCTCATAAAGCTGTGGTCAATGGA
AACATTATGTGGGTTGTTGGAGGATATATGTTCAACCACTCAGATTATAACATGTTTCTAGCGTATGACC
TTGCTTCTAGGGAGTGGCTTCCACTAAACCGTTCTGTGAACAATGTGGTTGTTAGATATGGTCATTCTTT
GGCATTATAAAGGATAAAATTTACATGTATGGAGGAAAATGATTCAACTGGGAATGTGACCAATGAG
TTGAGAGTTTTTACATTCATAATGAGTCATGGGTGTTGTTGACCCCTAAGGCAAAGGAGCAGTATGCAG
TGGTTGGCACTCTGCACACATTGTTACTGAAGAATGGCCGAGTGGTCATGCTGGTCATCTTTGGTCA
CTGCCCTCTATGGATATAAGCAATGTGCAGGAATATGATTTGGATAAGAACACATGGAGTATATTA



[View online »](#)

CACACCCAGGGTGCCCTTGTGCAAGGGGTTACGGCCATAGCAGTGTTTACGACCATAGGACCAGGGCCC
TATACGTTTCATGGTGGCTACAAGGCTTTCAGTGCCAATAAGTACCGGCTTGCAGATGATCTCTACCGATA
TGATGTGGATACCCAGATGTGGACCATTCTTAAGGACAGCCGATTTTTCCGTTACTTGCACACAGCTGTG
ATAGTGAGTGGAAACCATGCTGGTGTGGAGGAAACACACAATGACACATCTATGAGCCATGGCGCCA
AATGCTTCTCTCAGATTTTCATGGCCTATGACATTGCCTGTGACCCTGGTCAGTGCTTCCCAGACCTGA
TCTCCACCATGATGTCAACAGATTTGGCCATTGACAGCTTACACAACAGCACCATGTATGTGTTCCGGT
GGTTTCAATAGTCTCCTCCTCAGCGACATCCTGGTATTACCTCGGAACAGTGTGATGCGCATCGGAGTG
AAGCCGCTTGTAGCAGCAGGACCTGGTATTCGGTGTGTGGAACACAGGGTCGTCTCAGTGTATCTC
GTGGGCGCTGGCAACTGATGAACAAGAAGAAAAGTAAAAATCAGAATGTTTTTCCAAAAGAACTCTTGAC
CATGACAGATGTGACCAGCACACAGATTGTACAGCTGCACAGCCAACACCAATGACTGCCACTGGTGCA
ATGACCATTGTGTCCCAGGAACACAGCTGCTCAGAAGGCCAGATCTCCATTTTTAGGTATGAGAATTG
CCCCAAGGATAACCCCATGTACTACTGTAAACAAGAAGACCAGCTGCAGGAGCTGTGCCCTGGACCAGAAC
TGCCAGTGGGAGCCCGAATCAGGAGTGCATTGCCCTGCCGAAAATATCTGTGGCATTGGCTGGCATT
TGGTTGAAAACATGTTTGAATAACTACTGCAAGGAGAATTATGACAATGTAAATGTTCTGTAG
GAACCACAATGCCCTTTGGCTTCTTACAACCCAGAAGAAGGTAGAATTTGCTTAAAGCAGCTGCGA
ATAATGCAGTCACTCAGAGCATGTCCAAGCTCACCTTAACCCCATGGGTGCGCCTTCGGAAGATCAATG
TGTCTACTGGTGTGGGAAGATATGTCCCATTTACAAATAGTTTACTACAGTGGATGCCGTCTGAGCC
CAGTGATGCTGGATTCTGTGAAATTTATCAGAACCAGTACTCGGGGACTGAAGGCTGCAACCTGCATC
AACCCACTCAATGGTAGTGTCTGTGAAAGGCTGCAAACCACAGTGTAAAGCAGTGCCGGACACCATGTG
CCTTGAGGACAGCATGTGGAGATTGACCAGCGGACGCTCTGAGTGCATGTTGGTGCAGCAACATGAAGCA
GTGTGTGGACTCCAATGCCTATGTGGCTCCTTCCCTTTGGCCAGTGTATGGAATGGTATACGATGAGC
ACCTGCCCCCTGAAAATTGTTCAAGCTACTGTACCTGTAGTATTGCTTGGAGCAACCAGGCTGTGGCT
GGTGTACTGATCCCAGCAATACTGGCAAAGGAAATGCATAGAGGGTTCCTATAAAGGACCAGTGAAGAT
GCCTTCGCAAGCCCTACAGGAAATTTCTATCCACAGCCCTGCTCAATTCAGCATGTGTCTAGAGGAC
AGCAGATACAACCTGGTCTTTCATTCAGTGTCCAGCTTGCCAATGCAACGGCCACAGTAAATGCATCAATC
AGAGCATCTGTGAGAAGTGTGAGAACCTGACCACAGGCAAGCACTGCGAGACCTGCATATCTGGCTTCTA
CGGTGATCCCACCAATGGAGGAAATGTCAGCCATGCAAGTGAATGGGCACGCTCTCTGTGCAACACC
AACACGGGCAAGTGTCTGCACCACCAAGGGCGTCAAGGGGACGAGTGCCAGCTATGTGAGGTAGAAA
ATCGATACCAAGGAAACCCTCTCAGAGGAACATGTTATTACTCTTCTTATTGACTATCAGTTCACCTT
TAGTCTATCCCAGGAAGATGATCGCTATTACACAGCTATCAATTTTGTGGCTACTCCTGACGAACAAAAC
AGGGATTTGGACATGTTCAATGCCTCCAAGAATTTCAACCTCAACATCACCTGGGCTGCCAGTTTCT
CAGCTGGAACCCAGGCTGGAGAAGAGATGCCTGTTGTTTCAAAAACCAACATTAAGGAGTACAAAGATAG
TTTCTTAATGAGAAGTTTGATTTTCGCAACCACCCAAATATCACTTTCTTTGTTATGTCAGTAATTTT
ACCTGGCCCATCAAAATTCAGGTGCAAACCTGAACAA

AGCGGACCGACGCGTACGCGGCCGCTCGAG - GFP Tag - GTTTAA

Protein Sequence: >RG210990 representing NM_139322
 Red=Cloning site Green=Tags(s)

```

MVAAAAATEARLRRRTAATAALAGRSGGPHWDWDVTRAGRPGLGAGLRPLRLLSPPLRPRLLLLLLLLLSP
PLLLLLLPCEAEAAAAAAVSGSAAAEAKECDRPCVNGGRCNPGTGQCVCAPAGWVGEQCQHCGRFRLTG
SSGFVTDGPGNYKYKTKCTWLIEGQPNRIMRLRFNHFATECSWDHLYVYDGDISIYAPLVAASFGLIVPER
DGNETVPEVVATSGYALLHFFSDAAYNL TGFNITYSFDMCNNCSGRGECKISNSSDVECECSENWKGE
ACDIPHCNDNCGFPHRGICNSSDVRGCSFSDWQPGCSVPVPAHQSFWTREEYSNLKLPRAASHKAVVNG
NIMWVVGGYMFNHSDYNMVLAYDLASREWLPNRSVNNVVVRYGHSLALYKDKIYMYGGKIDSTGNVTNE
LRVFIHNESWLLTPKAKEQYAVVGHSAHIVTLKNGRVMLVIFGHCPLYGYISNVQEYDLDKNTWSIL
HTQGALVQGGYGHSSVYDHRTRALYVHGGYKAFSANKYRLADDLYRYDVTQMWTLKDSRFFRYLHTAV
IVSGTMLVFGGNTHNDTSMHGAKECFSSDFMAYDIACDRWSVLPDPDLHHDVNRFGHSAVLHNSTMYVFG
GFNSLLLSDILVFTSEQDAHRSEAACLAAGPGIRCVWNTGSSQCSWALATDEQEEKLKSECFSKRTLD
HDCRDQHTDCYSTANTNDCHWCNDHCVPRNHSCSEGQISIFRYENCPCNDNPMYCNKKTSCRSCALDQN
CQWEPRNQECIALPENICIGWHLVGNLSCLKIT TAKENYDNAKLF CRNHNALLASLTQKKVEFVLKQLR
IMQSSQSMSKLTLPWVGLRKINVSYWCEWEDMSPFTNSLLQWMPSEPSDAGFCGILSEPSTRGLKAATCI
NP L N G S V C E R P A N H S A K Q C R T P C A L R T A C G D C T S G S S E C M W C S N M K Q C V D S N A Y V A S F P F G Q C M E W Y T M S
T C P P E N C S G Y C T C S H C L E Q P G C W C T D P S N T G K G K C I E G S Y K P V K M P S Q A P T G N F Y P Q L L N S S M C L E D
S R Y N W S F I H C P A C Q C N G H S K C I N Q S I C E K C E N L T T G K H C E T C I S G F Y G D P T N G G K C Q P C K C N G H A S L C N T
N T G K C F C T T K G V K G D E C Q L C E V E N R Y Q G N P L R G T C Y Y T L L I D Y Q F T F S L S Q E D D R Y Y T A I N F V A T P D E Q N
R D L D M F I N A S K N F N L N I T W A A S F S A G T Q A G E E M P V V S K T N I K E Y K D S F S N E K F D F R N H P N I T F F V Y V S N F
T W P I K I Q V Q T E Q
  
```

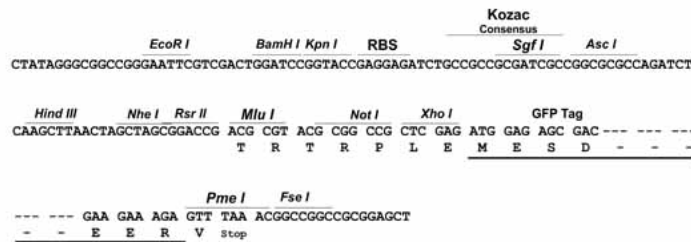
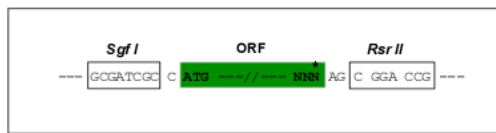
SGPTRRRLE - GFP Tag - V

Restriction Sites:

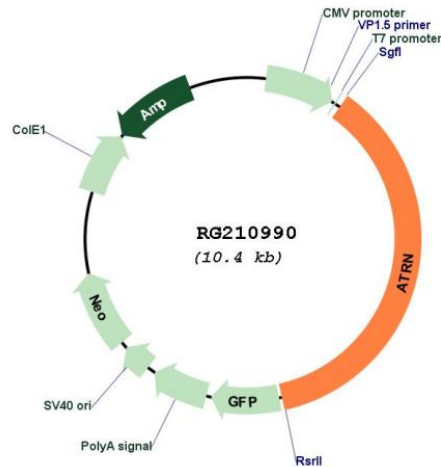
SgfI-RsrII

Cloning Scheme:

Cloning sites used for ORF Shuttling:



Plasmid Map:



ACCN: NM_139322

ORF Size: 3816 bp

OTI Disclaimer: The molecular sequence of this clone aligns with the gene accession number as a point of reference only. However, individual transcript sequences of the same gene can differ through naturally occurring variations (e.g. polymorphisms), each with its own valid existence. This clone is substantially in agreement with the reference, but a complete review of all prevailing variants is recommended prior to use. [More info](#)

OTI Annotation: This clone was engineered to express the complete ORF with an expression tag. Expression varies depending on the nature of the gene.

Components: The ORF clone is ion-exchange column purified and shipped in a 2D barcoded Matrix tube containing 10ug of transfection-ready, dried plasmid DNA (reconstitute with 100 ul of water).

Reconstitution Method:

1. Centrifuge at 5,000xg for 5min.
2. Carefully open the tube and add 100ul of sterile water to dissolve the DNA.
3. Close the tube and incubate for 10 minutes at room temperature.
4. Briefly vortex the tube and then do a quick spin (less than 5000xg) to concentrate the liquid at the bottom.
5. Store the suspended plasmid at -20°C. The DNA is stable for at least one year from date of shipping when stored at -20°C.

RefSeq: [NM_139322.1](#), [NP_647538.1](#)

RefSeq Size: 4116 bp

RefSeq ORF: 3819 bp

Locus ID: 8455

UniProt ID: [O75882](#)

Cytogenetics: 20p13

Domains:	CUB, CLECT, EGF_Lam, PSI, PSI, EGF, Kelch
Protein Families:	Druggable Genome, Secreted Protein, Transmembrane
Gene Summary:	This gene encodes both membrane-bound and secreted protein isoforms. A membrane-bound isoform exhibits sequence similarity with the mouse mahogany protein, a receptor involved in controlling obesity. A secreted isoform is involved in the initial immune cell clustering during inflammatory responses that may regulate the chemotactic activity of chemokines. [provided by RefSeq, Apr 2016]