

## Product datasheet for **RG210974**

### VEPH1 (NM\_024621) Human Tagged ORF Clone

#### Product data:

Product Type:	Expression Plasmids
Product Name:	VEPH1 (NM_024621) Human Tagged ORF Clone
Tag:	TurboGFP
Symbol:	VEPH1
Synonyms:	MELT; VEPH
Mammalian Cell Selection:	Neomycin
Vector:	pCMV6-AC-GFP (PS100010)
E. coli Selection:	Ampicillin (100 ug/mL)



[View online »](#)

ORF Nucleotide  
Sequence:

>RG210974 representing NM\_024621  
Red=Cloning site Blue=ORF Green=Tags(s)

TTTTGTAATACGACTCACTATAGGGCGGCCGGAATTCGTCGACTGGATCCGGTACCGAGGAGATCTGCC  
GCCGCGATCGCC

ATGCATCAACTGTTCAGACTGGTTTTGGGACAAAAAGATCTTTACAGACTGGGGACCTCTTCTCCTTAG  
ATGACTCTGAGATTGAAGACAGCCTTACAGAAGCTTTGGAGCAAATTAAGATAATTAGCTCATCTTCAGA  
TTACCAAACCAATAACAATGACCAGGCAGTAGTTGAAATCTGTATCACAAGAATCACAACAGCCATCAGA  
GAGACCGAGTCCATTGAAAAGCATGCAAAGGCCCTTGTGGGGCTCTGGGACTCCTGCTTGGAACATAACC  
TGAGACCCCTTTGGGAAAGACGAAGACACTCCTCATGCAAAAATCGCATCTGATATCATGAGTTGCATTTT  
ACAGAATTACAACCGACCCCAAGTGTGGCATTAGCCATCCCAATTGCAGTGAAATTCCTCCACAGAGGC  
ACAAGGAACTGTGCAGGAATATGTCTAACTACCTGTCTCTGGCTGCAATTACCAAGGCAGATCTCCTGG  
CTGATCACACGGAAGTTATAGTAAAGAGCATACTCCAAGGTAACACCATGTTGTTGAGAGTGTACCTGC  
TGTGTATGAAAAGCAGCCTCAGCCAATTAATAGACACCTGACAGAACTCCTGGCCTTGATGTCTCAGCTG  
GAACAGCCAGAACAGTACCATCTACTACGGCTTTTGCATGTAGCAGCAAAGAAAAACAACCTCGAGGTAG  
TTCAGAAGTGTATTCTTTCTAATTGGGCATTTGAAGGATTCAACCCATAATGACATCATCCTAAACAT  
CCTCATAGAGATAGCAGTCTATGAGCCAGTGGCTTTGAACAGTTTTCTTCCAATGCTGAAAGAGATTGGT  
GAGAGATCCCCTACCTCACTGGACAGATGGCAAGGATTTATGGAGCTGTTGGGCATGTGGATGAAGAGA  
GAGCCAGGAGCTGCCTGACATACCTGGTGGCCAACTGGCCAACATGGAGCATTGTTTACCATATTCT  
CCTGCTGGAGATTAAGCATCACCGACACCTTCTCCTCAATCTTGGCCCTCAGAGCAGAGACATCTTC  
CGCATGAGCAACAGCTTACCAGCATTGCTAACTCCTTACCCGACAACCTGAAAAATACCAAGGCTGAA  
GTGGCAGGAGAAAAATCAGCACTGAAATTTGAAATCCCTGAGAACTGGAAGAAACCAAGTATAGTAA  
TGAAAATGAAGACCATGAAAAACTCCAAGTTAAAATCCAGGCTTTTGAAGACAAGATAAATGCAGGGAGC  
AATACCCCTGGCTCTATCAGAAGATATAGTCTGGGCAAGTTTCTAAAAGAAAGAAAAACATTAGAT  
TTAACAGGTCAAAAAGTTTGGCTTTCCACACTATGCTCACAAGGGTGTGGGTTTCCAGATGACGGCGAAGA  
TGAAAACAGGGGAGACATACCAGCCAGCATCTCTTTTCAGAAATAGACCCACTTGGCCAAGGAAATGAC  
AAGCTGCCGTTTAAAGACAGACTGAGAGATCACAGCTGGGGAGTCTTCAGTTTTCATACCCAAATATTA  
TACATATAGACTCAGAGAATTTGCCAGAACTGTTAAAGAAAACCTCCAGGAAGAACTCCAGAGACAAC  
TGCAAGTCTATAGAATACCAAGATAAGCTCTACTTGCCTTAAAAAAAACCTCAGCAAAGTGAAGCA  
TATGCCATGGAATTTGAAAGAAGATCCAGTCCCTGATCAGTGTACCATTGAAGACACTGTGAGAAGTT  
GTGTAGCAAAGTTGTTTTCACCTGCTCCTGAAGGGTCACTACTGCCTATACAGTAAGTCCAGTTTAT  
TCTCATCAGCAAGAACCTCAGCCATGGATCCAGATCATGTTTCTATTTCCAGCAGAGCCTGTTTCTGAA  
CCCCTGTCCATTAGAGTCACTTCTGTGCAATTCCTCAGAGCTCTGTGGGAGAAGACCCAGGCAGGGGGTG  
CTCACAGCTTTGAAACTGCCATGATGGAGTCCACGTTTCCACAGCAGAAGGATCTGGACCAGGTACAGCT  
CCATCTGGAAGAAGTGAAGTTCTTTGACGTGTTTGGCTTCAGTGAACAGCAGGAGCATGGCAATGCTTC  
ATGTGCAACAATCCTGAGAAAGCAACTGTTGTAATCAAGATGGCCAGCCTCTCATAGAAGGAAAGCTTA  
AAGAGAAGCAAGTCAAGTGAAGTTCATCAAAAGTGGAAAACACGCTATTTTACTGGCTGGAATCA  
ACTTCTGTTTCAAAAAGGAAAGTCTAAAGATGACCCCTGACGACTGCCCAATAGAAGTCAAGCAAGTACAG  
AGTGTGAAGGCTGTGGCCAAGAAACGCAGGACCCTCTCTCCCGGGCTTTTGAATCTTACAGACA  
ATAAAACCTATGTCTTTAAGCCAAAGGATGAGAAGAATGCAGAAGAATGGCTCCAGTGCATCAACGTGGC  
AGTTGCCAAAGCCAAAGAAAGGAAAGTAGAGAAGTAACCATATCTG

ACGCGTACGCGGCCGCTCGAG - GFP Tag - GTTTAA

**Protein Sequence:** >RG210974 representing NM\_024621  
 Red=Cloning site Green=Tags(s)

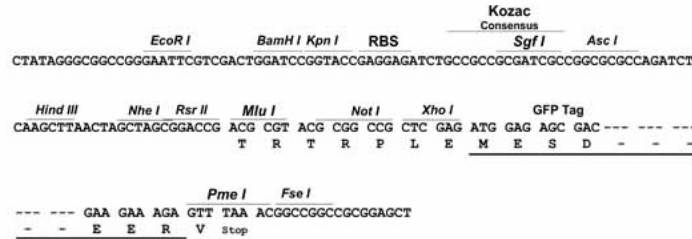
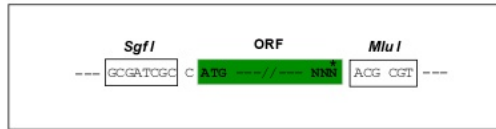
```
MHQLFRLVLGQKDL SRAGDLFSLDDSEIEDSLTEALEQIKIISSSSDYQTNNDQAVVEICITRITTAIR
ETESIEKHAKALVGLWDSLEHNL RPF GKDEDPHAKIASDIMSCILQNYNRPPVMALAPIAVKFLHRG
NKELCRNMSNYLSLAAITKADLLADHTEVIVKSILQGNTMLLRVLPVYVEKQPQPINRHLTELLALMSQL
EQPEQYHLLRLLHVAAKKKQLEVVQKCI PFLIGHLKDSTHNDIILNILEIAVYEPVALNSFLPMLKEIG
ERFPYLTQMARIYGAVGHVDEERARSCLTYLVSQLANMEHSFHHILLLEIKSITDTFSSILGPQSRDIF
RMSNSFTAIAKLLTRQLENTKAGSGRRKISTEIEFPEKLEETKLI VTENEDHEKLQVKIQAFEDKINAGS
NTPGSIRRYSLGQVSKEERKNIRFNRSKSLAFHTMLTKGVGSDDGEDENRGDIPASISLSEIDPLGQGN
KLPFKTDTERSQLGESSVSYPNIIHIDSENL PETVKENSQEETPETTASPIEQDKLYLHLKKNLSKVKA
YAMEIGKKIPVPDQCTIEDTVRSCVAKLFFTCSLKGHYCLYSKSSFILISQEPQPWIQIMFLFQQSLFPE
PLSIQSHSVQFLRALWEKTQAGGAHSFETAMMESTFPQQKDL DQVQLHLEEVRFDFVGFSETAGAWQCF
MCNNPEKATVVNQDGOPLIEGKLEKQVRWKF IKRWKTRYFTLAGNQLLFQK GKSKDDPDDCPIELSKVQ
SVKAVAKRRDRSLPRAFEIFTDNKTYVFKAKDEKNAEEWLQ CINVAVAQAKERESREVTYYL
```

TRTRPLE - GFP Tag - V

**Restriction Sites:** Sgfl-MluI

**Cloning Scheme:**

Cloning sites used for ORF Shutting:



**ACCN:** NM\_024621

**ORF Size:** 2499 bp

**OTI Disclaimer:** The molecular sequence of this clone aligns with the gene accession number as a point of reference only. However, individual transcript sequences of the same gene can differ through naturally occurring variations (e.g. polymorphisms), each with its own valid existence. This clone is substantially in agreement with the reference, but a complete review of all prevailing variants is recommended prior to use. [More info](#)

**OTI Annotation:** This clone was engineered to express the complete ORF with an expression tag. Expression varies depending on the nature of the gene.

**Components:** The ORF clone is ion-exchange column purified and shipped in a 2D barcoded Matrix tube containing 10ug of transfection-ready, dried plasmid DNA (reconstitute with 100 ul of water).

**Reconstitution Method:**

1. Centrifuge at 5,000xg for 5min.
2. Carefully open the tube and add 100ul of sterile water to dissolve the DNA.
3. Close the tube and incubate for 10 minutes at room temperature.
4. Briefly vortex the tube and then do a quick spin (less than 5000xg) to concentrate the liquid at the bottom.
5. Store the suspended plasmid at -20°C. The DNA is stable for at least one year from date of shipping when stored at -20°C.

**RefSeq:** [NM\\_024621.1](#), [NP\\_078897.1](#)

**RefSeq Size:** 3044 bp

**RefSeq ORF:** 2502 bp

**Locus ID:** 79674

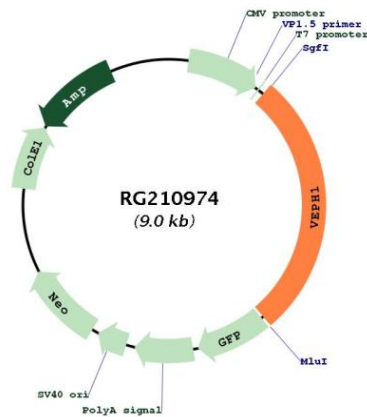
**UniProt ID:** [Q14D04](#)

**Cytogenetics:** 3q25.31-q25.32

**Domains:** PH

**Gene Summary:** Interacts with TGF-beta receptor type-1 (TGFB1) and inhibits dissociation of activated SMAD2 from TGFB1, impeding its nuclear accumulation and resulting in impaired TGF-beta signaling. May also affect FOXO, Hippo and Wnt signaling.[UniProtKB/Swiss-Prot Function]

**Product images:**



Circular map for RG210974