

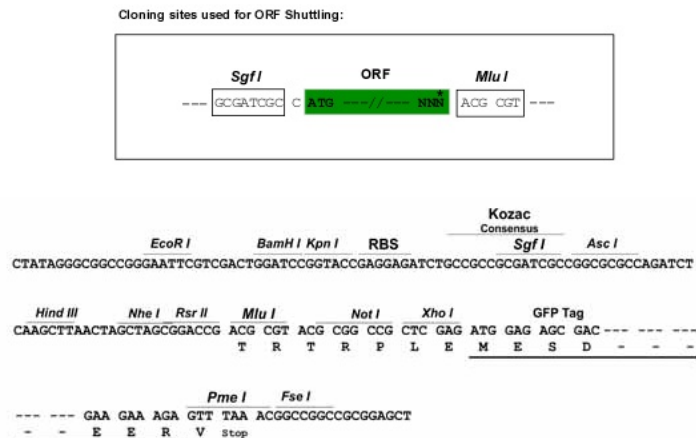
## Product datasheet for **RG210968**

### INSL5 (NM\_005478) Human Tagged ORF Clone

#### Product data:

Product Type:	Expression Plasmids
Product Name:	INSL5 (NM_005478) Human Tagged ORF Clone
Tag:	TurboGFP
Symbol:	INSL5
Synonyms:	PRO182; UNQ156
Mammalian Cell Selection:	Neomycin
Vector:	pCMV6-AC-GFP (PS100010)
E. coli Selection:	Ampicillin (100 ug/mL)
ORF Nucleotide Sequence:	<p>&gt;RG210968 representing NM_005478            Red=Cloning site Blue=ORF Green=Tags(s)</p> <p>TTTTGTAATACGACTCACTATAGGGCGGCCGGAATTCGTCGACTGGATCCGGTACCGAGGAGATCTGCC            GCCCGCATCGCC</p> <p>ATGAAGGGCTCCATTTTCACTCTGTTTTATTCTCTGTCCTATTTGCCATCTCAGAAGTGCGGAGCAAGG            AGTCTGTGAGACTCTGTGGGCTAGAATACATACGGACAGTCATCTATATCTGTGCTAGCTCCAGGTGGAG            AAGGCATCTGGAGGGGATCCCTCAAGCTCAGCAAGCTGAGACAGGAACTCCTTCCAGCTCCACATAAA            CGTGAGTTTTCTGAGGAAATCCAGCGCAAAACCTTCCGAAGGTGGATGCCTCAGGGGAAGACCGTCTTT            GGGGTGGACAGATGCCCCTGAAGAGCTTTGGAAGTCAAAGAAGCATTTCAGTGATGTCAAGACAAGATT            ACAAACTTTGTGTGCACTGATGGCTGTCCATGACTGATTTGAGTGCTCTTGC</p> <p>ACGCGTACGCGGCCGCTCGAG - GFP Tag - GTTTAA</p>
Protein Sequence:	<p>&gt;RG210968 representing NM_005478            Red=Cloning site Green=Tags(s)</p> <p>MKGSIFTLFLFSVLFAISEVRSKESVRLCGLEYIRTVIYICASSRWRHLEGIPQAQQAETGNSFQLPHK            REFSEENPAQNLPKVDASGEDRLWGGQMPTEELWKSCKHSVMSRQDLQTLCCTDGCSMTDLSALC</p> <p>TRTRPLE - GFP Tag - V</p>
Restriction Sites:	Sgfl-MluI


[View online »](#)

**Cloning Scheme:**


**ACCN:** NM\_005478

**ORF Size:** 405 bp

**OTI Disclaimer:** The molecular sequence of this clone aligns with the gene accession number as a point of reference only. However, individual transcript sequences of the same gene can differ through naturally occurring variations (e.g. polymorphisms), each with its own valid existence. This clone is substantially in agreement with the reference, but a complete review of all prevailing variants is recommended prior to use. [More info](#)

**OTI Annotation:** This clone was engineered to express the complete ORF with an expression tag. Expression varies depending on the nature of the gene.

**Components:** The ORF clone is ion-exchange column purified and shipped in a 2D barcoded Matrix tube containing 10ug of transfection-ready, dried plasmid DNA (reconstitute with 100 ul of water).

**Reconstitution Method:**

1. Centrifuge at 5,000xg for 5min.
2. Carefully open the tube and add 100ul of sterile water to dissolve the DNA.
3. Close the tube and incubate for 10 minutes at room temperature.
4. Briefly vortex the tube and then do a quick spin (less than 5000xg) to concentrate the liquid at the bottom.
5. Store the suspended plasmid at -20°C. The DNA is stable for at least one year from date of shipping when stored at -20°C.

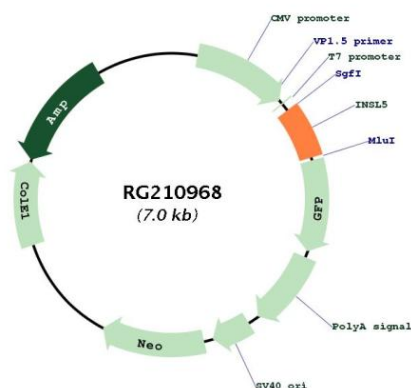
**Note:** Plasmids are not sterile. For experiments where strict sterility is required, filtration with 0.22um filter is required.

**RefSeq:** [NM\\_005478.2](#)

**RefSeq Size:** 715 bp

RefSeq ORF:	408 bp
Locus ID:	10022
UniProt ID:	<a href="#">Q9Y5Q6</a>
Cytogenetics:	1p31.3
Protein Families:	Secreted Protein
Gene Summary:	The protein encoded by this gene contains a classical signature of the insulin superfamily and is highly similar to relaxin 3 (RLN3/INSL7). [provided by RefSeq, Jul 2008]

## Product images:



Circular map for RG210968