

Product datasheet for **RG210967**

MYZAP (NM_001018100) Human Tagged ORF Clone

Product data:

| | |
|---------------------------|---|
| Product Type: | Expression Plasmids |
| Product Name: | MYZAP (NM_001018100) Human Tagged ORF Clone |
| Tag: | TurboGFP |
| Symbol: | MYZAP |
| Synonyms: | GCOM1; Gup; MYOZAP |
| Mammalian Cell Selection: | Neomycin |
| Vector: | pCMV6-AC-GFP (PS100010) |
| E. coli Selection: | Ampicillin (100 ug/mL) |



[View online »](#)

ORF Nucleotide Sequence:

>RG210967 representing NM_001018100
 Red=Cloning site Blue=ORF Green=Tags(s)

TTTTGTAATACGACTCACTATAGGGCGGCCGGGAATTCGTCGACTGGATCCGGTACCGAGGAGATCTGCC
 GCC**CGCATCGCC**

ATGCTGCGCTCCACGTCCACGGTCACCCTGCTCTCGGGCGGCCGCCAGGACGCCCGGGCGCCAGCA
 GGAGGGCAAATGTTTGCAGACTACGGCTGACCGTACCTCCTGAGAGTCCAGTTCTGAGCAATGTGAAAA
 GAAGATTGAGAGAAAAGAGCAGCTTCTTACCTGAGCAATGGAGAACCCTACCAGGAACTTCTCAGGGT
 GTTGTATTGGTGTGGTGCAGATCAGATCAAAATCAGCAGAAAAGAAATGGTGGTGTATGGGTGGTCCA
 CCAGTCAGCTGAAAGAAGAGATGAACTACATCAAAGATGTGAGAGCCACTTTGGAAAAGGTGAGAAAAGC
 AATGTATGGAGACTATGATGAGATGAGACAGAAGATTCGACAGCTCACCCAGGAATATCAGTTTCCCAT
 GCTCAGCAGGAGTATCTGGAGAATCACATCCAACCCAGTCGTCTGCCCTGGATCGTTTTAATGCCATGA
 ACTCAGCCTTGGCATCAGATTCCATTGGCCTGCAGAAAACCTCGTGGATGTGACTTTGGAAAACAGCAA
 CATTAAAGGATCAAATCAGAAATCTGCAGCAGACGTATGAAGCATCCATGGACAAGCTGAGGGAAAAGCAG
 AGGCAGTTGGAGGTAGCGCAAGTTGAAAACCAGCTGCTAAAAATGAAGGTGGAATCGTCCCAAGAAGCCA
 ATGCTGAGGTGATGCGAGAGATGACCAAGAAGCTGTACAGCCAGTATGAGGAGAAGCTGCAGGAAGAACA
 GAGGAAGCACAGTCTGAGAAGGAGGCTCTTTTGGAAAGAAACCAATAGTTTTCTGAAAGCGATTGAAGAA
 GCCAATAAAAAGATGCAAGCAGCAGAGATCAGCCTAGAGGAGAAAAGACCAGAGGATCGGGGAGCTGGACA
 GGCTGATTGAGCGCATGGAAAAGGAACGTCATCAACTGCAACTTCAACTCCTAGAACATGAAACAGAAAT
 GTCTGGGGAGTTAACTGATTCTGACAAGGAAAGGTATCAGCAGTTGGAGGAGGCATCAGCCAGCCTCCGT
 GAGCGGATCAGACACCTAGATGACATGGTGCATTGCCAGCAGAAGAAAGTCAAGCAGATGGTCGAGGAGA
 TTGAATCATTAAAGAAAAGTTGCAACAGAAAACAGCTCTTAATACTGCAGCTTTTAGAAAAGATATCTTT
 CTTAGAAGGAGAGAATAATGAACTACAAAAGCAGGTTGGACTATTTAACAGAAAACCCAGGCCAAGACCGAA
 GTGAAAACCAGAGAGATAGGAGTGGGCTGTGATCTTCTACCCAGCCAAAACAGGCAGGACTCGTAAATTG
 TGATGCCTTCTAGGAACTACACCCATACACAAGAGTCTCGAGTTAACCATGAAGAAAACCTCTGACT

ACGCGTACGCGGCCGCTCGAG – GFP Tag – GTTTAA

Protein Sequence:

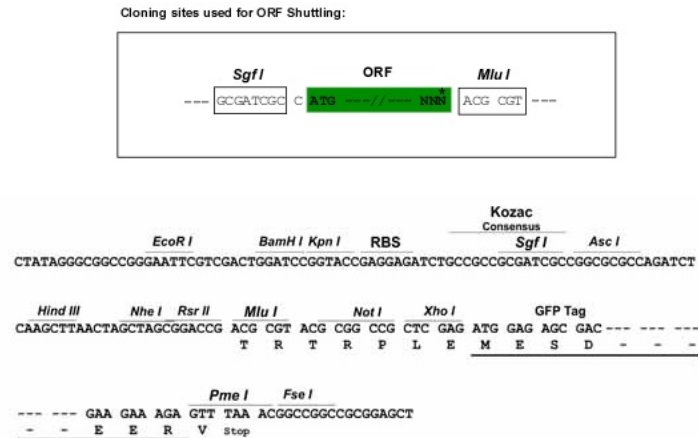
>RG210967 representing NM_001018100
 Red=Cloning site Green=Tags(s)

MLRSTSTVTLSSGGAARTPGAPSRANVCRLRLTVPPEPVPVPEQCEKKIERKEQLLDLSNGEPTRKLPQG
 VVYGVVRRSDQNQQKEMVYVWSTSQLKEEMNYIKDVRATLEKVRKRMVGDYDEMQRKIRQLTQELSVSH
 AQQEYLENHIQTQSSALDRFNAMNSALASDSIGLQKTLVDVTLENSNIKDQIRNLQQTYEASMDKLREKQ
 RQLEVAQVENQLLKMKESSQEAANAEMREMTKKLYSQYEEKLQEEQRKHSAEKEALLEETNSFLKAIEE
 ANKKMQAAEISLEEKDQRIGELDRLIERMEKERHQLQLLLEHEHEMSGELTDSKERYQQLEEASASLR
 ERIRHLDDMVHCQQKVKQMVVEIESLKKKLQKQLLILQLLEKISFLEGENNELQSRLDYLTETQAKTE
 VETREIGVGCDDLPSQTGRTREIVMPSRNYTPYTRVLELTMKKTLT

TRTRPLE – GFP Tag – V

Restriction Sites:

Sgfl-MluI

Cloning Scheme:


ACCN: NM_001018100

ORF Size: 1398 bp

OTI Disclaimer: The molecular sequence of this clone aligns with the gene accession number as a point of reference only. However, individual transcript sequences of the same gene can differ through naturally occurring variations (e.g. polymorphisms), each with its own valid existence. This clone is substantially in agreement with the reference, but a complete review of all prevailing variants is recommended prior to use. [More info](#)

OTI Annotation: This clone was engineered to express the complete ORF with an expression tag. Expression varies depending on the nature of the gene.

Components: The ORF clone is ion-exchange column purified and shipped in a 2D barcoded Matrix tube containing 10ug of transfection-ready, dried plasmid DNA (reconstitute with 100 ul of water).

Reconstitution Method:

1. Centrifuge at 5,000xg for 5min.
2. Carefully open the tube and add 100ul of sterile water to dissolve the DNA.
3. Close the tube and incubate for 10 minutes at room temperature.
4. Briefly vortex the tube and then do a quick spin (less than 5000xg) to concentrate the liquid at the bottom.
5. Store the suspended plasmid at -20°C. The DNA is stable for at least one year from date of shipping when stored at -20°C.

RefSeq: [NM_001018100.5](#)

RefSeq Size: 2399 bp

RefSeq ORF: 1401 bp

Locus ID: 100820829

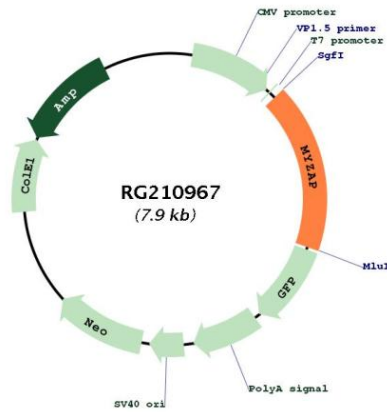
UniProt ID: [P0CAP1](#)

Cytogenetics: 15q21.3

Gene Summary:

This gene encodes a protein that is abundantly expressed in cardiac tissue. The encoded protein localizes to intercalated discs in cardiomyocytes and functions as an activator of Rho-dependent serum-response factor signaling. Alternative splicing results in multiple transcript variants. Readthrough transcription also exists between this gene and the neighboring downstream gene POLR2M (polymerase (RNA) II (DNA directed) polypeptide M) and is represented with GenID: 145781. [provided by RefSeq, Mar 2014]

Product images:



Circular map for RG210967