

Product datasheet for **RG210963**

nkx6.2 (NKX6-2) (NM_177400) Human Tagged ORF Clone

Product data:

Product Type:	Expression Plasmids
Product Name:	nkx6.2 (NKX6-2) (NM_177400) Human Tagged ORF Clone
Tag:	TurboGFP
Symbol:	NKX6-2
Synonyms:	GTX; NKX6.2; NKX6B; SPAX8
Mammalian Cell Selection:	Neomycin
Vector:	pCMV6-AC-GFP (PS100010)
E. coli Selection:	Ampicillin (100 ug/mL)
ORF Nucleotide Sequence:	>RG210963 representing NM_177400 Red=Cloning site Blue=ORF Green=Tags(s)

TTTTGTAATACGACTCACTATAGGGCGGCCGGAATTCGTCGACTGGATCCGGTACCGAGGAGATCTGCC
GCC**CGATCGCC**

ATGGACACTAACCGCCCGGGCGGTTTCGTGCTGAGCAGTGCCCCGCTGGCCGCGCTGCACAACATGGCCG
AGATGAAGACGTCGCTGTTCCCTACGCGCTGCAGGGTCCGGCCGGCTTCAAGGCGCCGCGCTGGGGG
CCTGGGCGCGCAGCTCCCGCTCGGGACCCCGCACGGCATCAGCGACATCTGGGCCGGCCGTTGGGCGG
GCGGGCGGGGCTCCTGGGGGGCTGCCCGGCTCAACGGGCTCGCGTCTCGCCGGCGTTTACTTTCG
GGCCCGCGCCGCTGTGGCGCGGGCTACCCCAAGCCCCTGGCCGAGCTGCCGGGGCGCCGCCCATCTT
CTGGCCCGCGGCTGGTGCAGGGCGCGCCCTGGAGGGACCCGCGTCTGGCTGGCCCGCCCGCCGCGCGG
GTCCTGGACAAGGACGGGAAGAAGAAGCACTCGCGCCCGACCTTCTCGGGCCAGCAGATCTTCGCGCTGG
AGAAAACCTTCGAGCAGACCAAGTACCTGGCGGGCCCGGAGCGCGCGCTCTCGCCTACTCGCTGGGCAT
GACCGAGAGCCAGGTGAAGGTCTGGTCCAGAACC CGCGGACCAAGTGGCGCAAGCGGCACGCGCGGAG
ATGGCGTCGGCCAAGAAGAAGCAGGACTCGGACGCGGAGAAGCTGAAGGTGGGCGGCTCGGACGCGGAGG
ACGACGACGAATAACAACCGCCCTGGACCCCACTCGGACGACGAGAAGATCACGCGGCTGCTCAAGAA
GCACAAACCTCGAACTTGGCGCTGGTCAGCCCGTGGCGGCGCGCGGGGGACGCCTTG

ACGCGTACGCGGCCGCTCGAG - GFP Tag - GTTTAA



[View online »](#)

Protein Sequence: >RG210963 representing NM_177400
 Red=Cloning site Green=Tags(s)

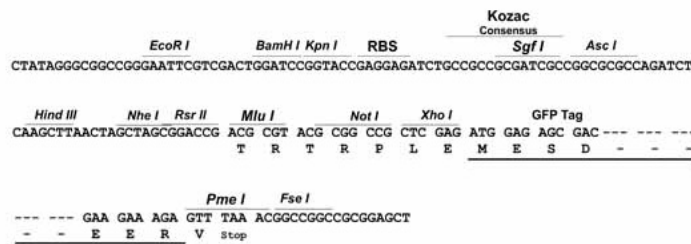
MDTNRPGAFVLLSSAPLAALHNMAEMKTSLFPYALQGPAGFKAPALGGLGAQLPLGTPHGISDILGRPVGA
 AGGGLLGGLPRLNGLASSAGVYFGPAAAVARGYPKPLAELPGRPPIFWPGVVQGAPWRDPRLAGPAPAGG
 VLDKDGKKKHSRPTFFSGQQIFALEKTFEQTKYLAGEPARARLAYSLSGMTESQYKVFQNRRTKWRKRHAAE
 MASAKKKQSDAEKLVGGSDAEDDDEYNRPLDPNSDDEKITRLLKHKPSNLALVSPCGGGAGDAL

TRTRPLE - GFP Tag - V

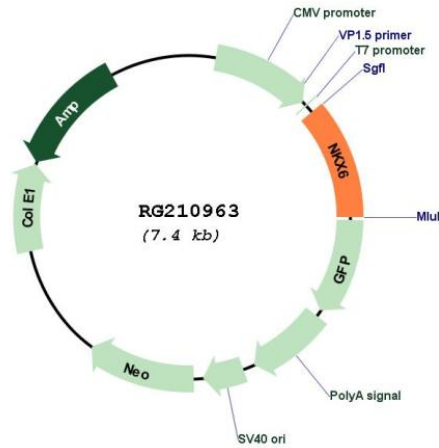
Restriction Sites: SgfI-MluI

Cloning Scheme:

Cloning sites used for ORF Shutting:



Plasmid Map:



ACCN: NM_177400

ORF Size: 831 bp

OTI Disclaimer:	The molecular sequence of this clone aligns with the gene accession number as a point of reference only. However, individual transcript sequences of the same gene can differ through naturally occurring variations (e.g. polymorphisms), each with its own valid existence. This clone is substantially in agreement with the reference, but a complete review of all prevailing variants is recommended prior to use. More info
OTI Annotation:	This clone was engineered to express the complete ORF with an expression tag. Expression varies depending on the nature of the gene.
Components:	The ORF clone is ion-exchange column purified and shipped in a 2D barcoded Matrix tube containing 10ug of transfection-ready, dried plasmid DNA (reconstitute with 100 ul of water).
Reconstitution Method:	<ol style="list-style-type: none">1. Centrifuge at 5,000xg for 5min.2. Carefully open the tube and add 100ul of sterile water to dissolve the DNA.3. Close the tube and incubate for 10 minutes at room temperature.4. Briefly vortex the tube and then do a quick spin (less than 5000xg) to concentrate the liquid at the bottom.5. Store the suspended plasmid at -20°C. The DNA is stable for at least one year from date of shipping when stored at -20°C.
RefSeq:	NM_177400.2
RefSeq Size:	834 bp
RefSeq ORF:	834 bp
Locus ID:	84504
UniProt ID:	Q9C056
Cytogenetics:	10q26.3
Protein Families:	Transcription Factors
Gene Summary:	Transcription factor with repressor activity involved in the regulation of axon-glia interactions at myelin paranodes in oligodendrocytes. Binds to the consensus DNA sequence 5'-(A/T)TTAATGA-3'. In oligodendrocytes, binds to MBP and PLP1 promoter regions. [UniProtKB/Swiss-Prot Function]