

Product datasheet for **RG210961**

CD10 (MME) (NM_007288) Human Tagged ORF Clone

Product data:

Product Type:	Expression Plasmids
Product Name:	CD10 (MME) (NM_007288) Human Tagged ORF Clone
Tag:	TurboGFP
Symbol:	MME
Synonyms:	CALLA; CD10; CMT2T; NEP; SCA43; SFE
Mammalian Cell Selection:	Neomycin
Vector:	pCMV6-AC-GFP (PS100010)
E. coli Selection:	Ampicillin (100 ug/mL)



[View online »](#)

ORF Nucleotide
Sequence:

>RG210961 representing NM_007288
Red=Cloning site Blue=ORF Green=Tags(s)

TTTTGTAATACGACTCACTATAGGGCGGCCGGAATTCGTGCGACTGGATCCGGTACCGAGGAGATCTGCC
GCC**CGGATCGCC**

ATGGGCAAGTCAGAAAGTCAGATGGATATAACTGATATCAACACTCCAAAGCCAAAGAAGAAACAGCGAT
GGACTCCACTGGAGATCAGCCTCTCGGTCTTGCTGCTCCTCACCATCATAGCTGTGACAATGATCGC
ACTCTATGCAACCTACGATGATGGTATTTGCAAGTCATCAGACTGCATAAAATCAGCTGCTCGACTGATC
CAAAACATGGATGCCACCACTGAGCCTTGACAGACTTTTTCAAATATGCTTGCGGAGGCTGGTTGAAAC
GTAATGTCATTCCCGAGACCAGCTCCCCTTACGGCAACTTTGACATTTAAGAGATGAACTAGAAGTCGT
TTTGAAAGATGTCCTTCAAGAACCACAACTGAAGATATAGTAGCAGTGCAGAAAGCAAAAGCATTGTAC
AGGTCTTGATAAATGAATCTGCTATTGATAGCAGAGGTGGAGAACCCTACTCAAAGTTACCAGACA
TATATGGTGGCCAGTAGCAACAGAAAAGTGGGAGCAAAAATATGGTGTCTTTGGACAGCTGAAAAAGC
TATTGCACAAGTGAATCTAAATATGGGAAAAAGTCCTTATTAATTTGTTTGGTGGCAGTATGATAAG
AATTCTGTGAATCATGTAATTCATATTGACCAACCTCGACTTGGCCTCCCTTCTAGAGATTACTATGAAT
GCACTGGAATCTATAAGAGGCTTGTACAGCATATGTGGATTTTATGATTCTGTGGCCAGATTGATTCCG
TCAGGAAGAAAGATTGCCATCGATGAAAACCACTTGCCTTGGAAATGAATAAAGTTATGGAATTGGAA
AAAGAAATGGCAATGCTACGGCTAAACCTGAAGATCGAAATGATCCAATGCTTCTGTATAACAAGATGA
CATTGGCCAGATCCAAAATAACTTTTCACTAGAGATCAATGGGAAGCCATTGAGCTGGTTGAATTTAC
AAATGAAATCATGTCAACTGTGAATATTAGTATTACAAATGAGGAAGATGTGGTTGTTTATGCTCCAGAA
TATTTAACCAAATTAAGCCATTCTTACCAAATATTCTGCCAGAGATCTTCAAATTTAATGTCCTGGA
GATTCATAATGGATCTTGTAAAGCAGCCTCAGCCGAACCTACAAGGAGTCCAGAAATGCTTCCGCAAGGC
CCTTTATGGTACAACCTCAGAAACAGCAACTTGGAGACGTTGTGCAAACTATGTCAATGGGAATATGGAA
AATGCTGTGGGAGGCTTTATGTGGAAGCAGCATTGCTGGAGAGAGTAAACATGTGGTCCGAGGATTTGA
TTGCACAGATCCGAGAAGTTTTTATTGACTTTAGATGACCTCACTTGGATGGATGCCGAGACAAAAAA
GAGAGCTGAAGAAAAGGCCTTAGCAATTAAGAAAGGATCGGCTATCCTGATGACATTGTTTCAAATGAT
AACAACTGAATAATGAGTACCTCGAGTTGAACTACAAAGAAGATGAATACTTCGAGAACATAATTCAA
ATTTGAAATTCAGCCAAAGTAAACAAGTGAAGAAGCTCCGAGAAAAGGTGGACAAAGATGAGTGGATAAG
TGGAGCAGCTGTAGTCAATGCATTTTACTCTTCAGGAAGAAATCAGATAGTCTTCCAGCCGGCATTCTG
CAGCCCCCTTTTATGTCAGCAGTCCAACCTATTGAACTATGGGGCATCGGCATGGTTCATAGGAC
ACGAAATCACCCATGGCTTCGATGACAATGGCAGAACTTTAACAAAGATGGAGACCTCGTTGACTGGT
GACTCAACAGTCTGCAAGTAACTTTAAGGAGCAATCCCAGTGCATGGTGTATCAGTATGGAACTTTTCC
TGGGACCTGGCAGGTGGACAGCACCTTAATGGAATTAATACACTGGGAGAAAACATTGCTGATAATGGAG
GTCTTGGTCAAGCATACAGAGCCTATCAGAATTATATAAAAAGAATGGCGAAGAAAAATTACTTCTG
ACTTGACCTAAATCACAAACAATTTTTTCTTGAACCTTGCACAGGTGTGGTGTGGAACCTATAGGCCA
GAGTATGCGGTAACTCCATTAACAGATGTGCACAGTCCAGGCAATTTGAGGATTATTGGGACTTTGC
AGAAGTCTGCAGATTTTCAGAAGCCTTCACTGCCGCAAGAATTCATACATGAATCCAGAAAAGAAGTG
CCGGGTTTGG

ACGCGTACGCGGCCGCTCGAG – GFP Tag – GTTTAA

Protein Sequence: >RG210961 representing NM_007288
 Red=Cloning site Green=Tags(s)

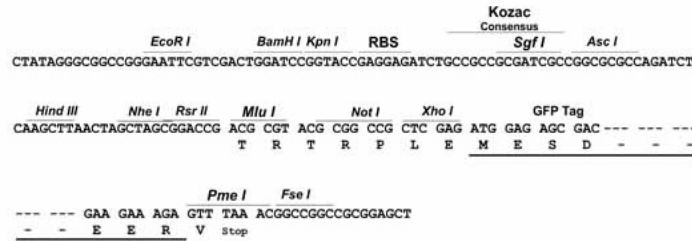
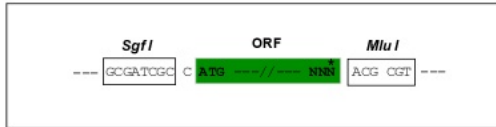
MGKSESQMDITDINTPKPKKKQRWTPLEISLSVLVLLLTIIAVTMIALYATYDDGICKSSDCIKSAARLI
 QNMDATTEPCTDFFKYACGGWLKRNVIPETSSRYGNFDILRDELEVVLKVDLQEPKTEDIVAVQKAKALY
 RSCINESAIDSRGGEPLKLLPDIYGWPVATENWEQKYGASWTAEKAI AQLNSKYGKKVLINL FVGTDDK
 NSVNHVIHIDQPRLGLPSRDYECTGIYKEACTAYVDFMISVARLIRQEERLPIDENQLALEMNK VMELE
 KEIANATAKPEDRNDPMLLYNKMTLAQIQNNFSL EINGKPF SWLNFTNEIMSTVNI SITNEEDVVVYAPE
 YLTKLKPILTKYSARDLQNLMSWRFIMDLVSSLR TYKESRNAFRKALYGT TSETATWRRCAN YVNGNME
 NAVGRLYVEAAFAGESKHVVEDLIAQIREVFIQTLDDL TWMDAETKKRAEEKALAIKERIGYPDDI VSND
 NKLNNEYLELNYKEDEYFENIIQNLKFSQSKQLK LREKVDKDEWISGA AVVNAFYSSGRNQIVFPAGIL
 QPPFFSAQQSNLNYGGIGMVGHEITHGFDDNGRNFNKDGDLDVWWTQQSASFKEQSQC MVYQYGNFS
 WDLAGGQHLNGINTLGENIADNGGLQAYRAYQNYIKNGEEKLLPGLDLNHKQLFFLNFAQVWC GTYRP
 EYAVNSIKTDVHSPGNFRIIGTLQNSAEFSEAFHCRKNSYMNPEKKCRVW

TRTRPLE - GFP Tag - V

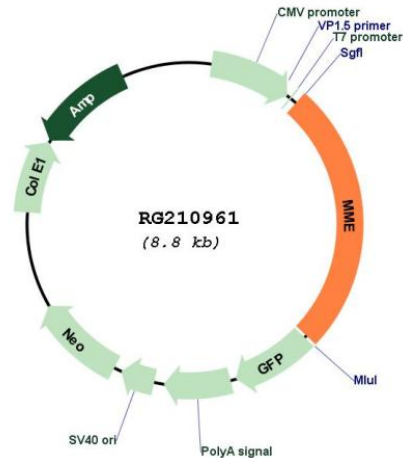
Restriction Sites: SgfI-MluI

Cloning Scheme:

Cloning sites used for ORF Shutting:



Plasmid Map:



ACCN: NM_007288

ORF Size: 2250 bp

OTI Disclaimer: The molecular sequence of this clone aligns with the gene accession number as a point of reference only. However, individual transcript sequences of the same gene can differ through naturally occurring variations (e.g. polymorphisms), each with its own valid existence. This clone is substantially in agreement with the reference, but a complete review of all prevailing variants is recommended prior to use. [More info](#)

OTI Annotation: This clone was engineered to express the complete ORF with an expression tag. Expression varies depending on the nature of the gene.

Components: The ORF clone is ion-exchange column purified and shipped in a 2D barcoded Matrix tube containing 10ug of transfection-ready, dried plasmid DNA (reconstitute with 100 ul of water).

Reconstitution Method:

1. Centrifuge at 5,000xg for 5min.
2. Carefully open the tube and add 100ul of sterile water to dissolve the DNA.
3. Close the tube and incubate for 10 minutes at room temperature.
4. Briefly vortex the tube and then do a quick spin (less than 5000xg) to concentrate the liquid at the bottom.
5. Store the suspended plasmid at -20°C. The DNA is stable for at least one year from date of shipping when stored at -20°C.

RefSeq: [NM_007288.3](#)

RefSeq Size: 5665 bp

RefSeq ORF: 2253 bp

Locus ID: 4311

UniProt ID:	<u>P08473</u>
Cytogenetics:	3q25.2
Domains:	Peptidase_M13
Protein Families:	Druggable Genome, Protease, Transmembrane
Protein Pathways:	Alzheimer's disease, Hematopoietic cell lineage, Renin-angiotensin system
Gene Summary:	<p>The protein encoded by this gene is a type II transmembrane glycoprotein and a common acute lymphocytic leukemia antigen that is an important cell surface marker in the diagnosis of human acute lymphocytic leukemia (ALL). The encoded protein is present on leukemic cells of pre-B phenotype, which represent 85% of cases of ALL. This protein is not restricted to leukemic cells, however, and is found on a variety of normal tissues. The protein is a neutral endopeptidase that cleaves peptides at the amino side of hydrophobic residues and inactivates several peptide hormones including glucagon, enkephalins, substance P, neurotensin, oxytocin, and bradykinin. [provided by RefSeq, Aug 2017]</p>