

Product datasheet for **RG210950**

PMS2L3 (NM_005395) Human Tagged ORF Clone

Product data:

Product Type:	Expression Plasmids
Product Name:	PMS2L3 (NM_005395) Human Tagged ORF Clone
Tag:	TurboGFP
Symbol:	PMS2L3
Synonyms:	MGC126647; PMS2L9; PMS5; PMSR3; postmeiotic segregation increased 2-like 3; postmeiotic segregation increased 2-like 9
Mammalian Cell Selection:	Neomycin
Vector:	pCMV6-AC-GFP (PS100010)
E. coli Selection:	Ampicillin (100 ug/mL)
ORF Nucleotide Sequence:	>RG210950 representing NM_005395 Red=Cloning site Blue=ORF Green=Tags(s)

TTTTGTAATACGACTCACTATAGGGCGGCCGGAATTCGTCGACTGGATCCGGTACCGAGGAGATCTGCC
 GCC**CGATCGC**

ATGAACACATTGCAGGGGCCAGTGTCAATCAAAGATGTGGCTGTGGATTTACCCAGGAGGAGTGGCGGC
 AACTGGACCCTGATGAGAAGATAGCATACGGGGATGTGATGTTGGAGAACTACAGCCATCTAGTTTCTGT
 GGGGTATGATTATCACCAAGCCAAACATCATCATGGAGTGGAGGTGAAGGAAGTGGAGCAGGGAGAGGAG
 CCGTGGATAATGGAAGGTGAATTTCCATGTCAACATAGTCCAGAACCTGCTAAGGCCATCAAACCTATTG
 ATCGGAAGTCAGTCCATCAGATTTGCTCTGGGCCAGTGGTACTGAGTCTAAGCACTGCAGTGAAGGAGTT
 AGTAGAAAACAGTCTGGATGCTGGTGCCACTAATATTGATCTAAAGCTTAAGGACTATGGAGTGGATCTC
 ATTGAAGTTTCAGACAATGGATGTGGGTAGAAGAAGAACTTTGAAGGCTTAACGATGTCAACATTTC
 TACCTGCCACGCGTCGG

AG**CGGACCG**ACGCGTACGCGGCCGCTCGAG - GFP Tag - GTTTAA

Protein Sequence:	>RG210950 representing NM_005395 Red=Cloning site Green=Tags(s)
-------------------	--

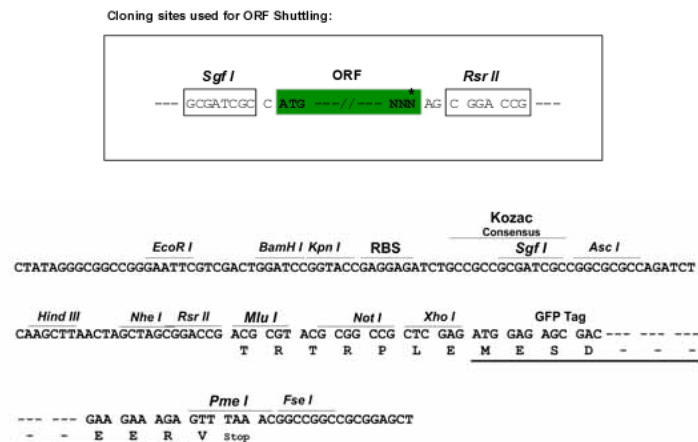
MNTLQGPVSFKDVAVDFTQEEWRQLDPDEKIAIYGDVMLENYSHLVSVGYDYHQAKHHHGVEVKEVEQGEE
 PWIMEGEFPCQHSPEPAKAIKPIDRKSVHQICSGPVVLSLSTAVKELVENS LDAGATNIDLKLDYGVDL
 IEVSDNGCGVEEENFEGLTMSPLPATRR

SGPTRRRLE - GFP Tag - V


[View online »](#)

Restriction Sites: SgfI-RsrII

Cloning Scheme:



ACCN: NM_005395

ORF Size: 507 bp

OTI Disclaimer: The molecular sequence of this clone aligns with the gene accession number as a point of reference only. However, individual transcript sequences of the same gene can differ through naturally occurring variations (e.g. polymorphisms), each with its own valid existence. This clone is substantially in agreement with the reference, but a complete review of all prevailing variants is recommended prior to use. [More info](#)

OTI Annotation: This clone was engineered to express the complete ORF with an expression tag. Expression varies depending on the nature of the gene.

Components: The ORF clone is ion-exchange column purified and shipped in a 2D barcoded Matrix tube containing 10ug of transfection-ready, dried plasmid DNA (reconstitute with 100 ul of water).

Reconstitution Method:

1. Centrifuge at 5,000xg for 5min.
2. Carefully open the tube and add 100ul of sterile water to dissolve the DNA.
3. Close the tube and incubate for 10 minutes at room temperature.
4. Briefly vortex the tube and then do a quick spin (less than 5000xg) to concentrate the liquid at the bottom.
5. Store the suspended plasmid at -20°C. The DNA is stable for at least one year from date of shipping when stored at -20°C.

Note: Plasmids are not sterile. For experiments where strict sterility is required, filtration with 0.22um filter is required.

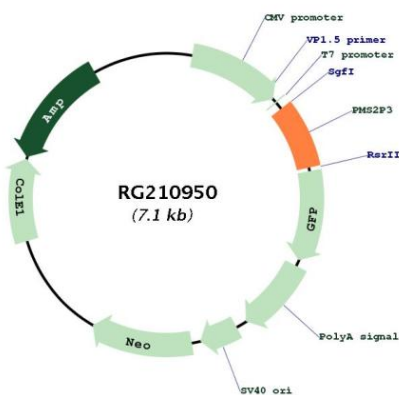
RefSeq: [NM_005395.2](#), [NP_005386.2](#)

RefSeq Size: 1329 bp

RefSeq ORF: 509 bp

Locus ID: 5387
 Cytogenetics: 7q11.23
 Domains: KRAB
 Protein Families: Transcription Factors

Product images:



Circular map for RG210950