

## Product datasheet for **RG210928**

### **NRP2 (NM\_201267) Human Tagged ORF Clone**

#### **Product data:**

Product Type:	Expression Plasmids
Product Name:	NRP2 (NM_201267) Human Tagged ORF Clone
Tag:	TurboGFP
Symbol:	NRP2
Synonyms:	NP2; NPN2; PRO2714; VEGF165R2
Mammalian Cell Selection:	Neomycin
Vector:	pCMV6-AC-GFP (PS100010)
E. coli Selection:	Ampicillin (100 ug/mL)



[View online »](#)

**ORF Nucleotide Sequence:**

>RG210928 representing NM\_201267  
 Red=Cloning site Blue=ORF Green=Tags(s)

TTTTGTAATACGACTCACTATAGGGCGGCCGGGAATTCGTCGACTGGATCCGGTACCGAGGAGATCTGCC  
 GCC**CGGATCGCC**

ATGGATATGTTTCTCTCACCTGGGTTTTCTTAGCCCTCTACTTTTCAAGACACCAAGTGAGAGGCCAAC  
 CAGACCCACCGTGCAGAGTCTGTTGAATTCAAAGATGCTGGCTATATCACCTCTCCCGTTACCCCA  
 GGACTACCCCTCCACCAGAAGTGCAGTGGATTGTTTACGCCCCGAACCAACCAAGAAGATTGCCTC  
 AACTTCAACCCTCACTTTGAAATCGAGAAGCAGACTGCAAGTATGACTTTATCGAGATTCGGGATGGG  
 ACAGTGAATCCGCAGACCTCTGGGCAAACTGTGGAAACATCGCCCCGCCACCATCATCTCTCGGG  
 CTCCATGCTCTACATCAAGTTCACCTCCGACTACGCCCGCAGGGGGCAGGCTTCTCTGCGCTACGAG  
 ATCTTCAAGACAGGCTCTGAAGATTGCTCAAAAACTTACAAGCCCCAACGGGACCATCGAATCTCCTG  
 GTTTTCTGAGAAGTATCCACACAACCTGGACTGCACCTTACCATCCTGGCCAAACCAAGATGGAGAT  
 CATCTGCAGTTCCTGATCTTTGACCTGGAGCATGACCTTTGCAGGTGGGAGAGGGGACTGCAAGTAC  
 GATTGGCTGGACATCTGGGATGGCATTCCACATGTTGGCCCCCTGATTGGCAAGTACTGTGGACAAAA  
 CACCCTCTGAAGTTCGTTTCATCGACGGGATCCTCTCCCTGACCTTTCACACGGACATGGCGGTGGCCAA  
 GGATGGCTTCTCTGCGGTTACTACCTGGTCCACCAAGAGCCACTAGAGAAGTTTTCAGTGAATGTTCT  
 CTGGGCATGGAGTCTGGCCGGATTGCTAATGAACAGATCAGTGCCTCATCTACCTACTCTGATGGGAGGT  
 GGACCCCTCAACAAAGCCGGCTCCATGGTGTGACAATGGCTGGACCCCAACTTGGATTCCAACAAGGA  
 GTATCTCCAGGTGGACCTGCGCTTTTTAACCATGCTCACGGCCATCGAACACAGGGAGCGATTTCCAGG  
 GAAACACAGAATGGTACTACGTCAAATCTACAAGCTGGAAGTCAGACTAATGGAGAGGACTGGATGG  
 TGTACCGCATGGCAAAAACACAAGGTATTTCAAGCAACAACGATGCAACTGAGTGGTTCTGAACAA  
 GCTCCACGCTCCACTGCTGACAAGGTTTGTAGAAATCCGCCCTCAGACCTGGCACTCAGGTATCGCCCTC  
 CGGCTGGAGCTCTTCGGCTGCCGGTTCACAGATGCTCCCTGCTCAACATGCTGGGGATGCTCTCAGGCC  
 TCATTGCAGACTCCAGATCTCCGCTCTTCCACCCAGGAATACCTCTGGAGCCCCAGTGCAGCCCGCT  
 GGTGAGCAGCCGCTCGGGCTGGTTCCTCGAATCCCTCAGGCCAGCCCGGTGAGGAGTGGCTTCAGGTA  
 GATCTGGAAACACCAAGACAGTAAAGGTGTCATCATCCAGGGAGCCCGGAGGAGACAGTATCACTG  
 CTGTGGAAGCCAGAGCATTGTGCGCAAGTCAAAGTCTCTACAGCCTAAACGGCAAGGACTGGGAATA  
 CATTGAGGACCCAGGACCCAGCAGCCAAAGCTGTTGAAAGGAAACATGCACTATGACACCCCTGACATC  
 CGAAGGTTTGACCCATTCCGGCACAGTATGTGCGGGTATACCCGGAGAGGTGGTCGCCGGCGGGATTG  
 GGATGCGGCTGGAGGTGCTGGGCTGTGACTGGACAGACTCCAAGCCACGGTAGAGACGCTGGGACCCAC  
 TGTGAAGAGCGAAGAGACAACCACCCCTACCCACCGAAGAGGAGGCCACAGAGTGTGGGGAGAACTGC  
 AGCTTTGAGGATGACAAAGATTTGCAGCTCCCTTCGGGATTCAATTGCAACTTCGATTTCTCGAGGAGC  
 CCTGTGGTTGGATGTATGACCATGCCAAGTGGCTCCGGACCACCTGGGCCAGCAGCTCCAGCCAAACGA  
 CCGGACGTTTCCAGATGACAGGAATTTCTTGGGCTGCAGAGTGCAGCCAGAGAGAGGGCCAGTATGCC  
 CGGCTCATCAGCCCCCTGTCCACCTGCCCCGAAGCCCGGTGTGCATGGAGTTCAGTACCAGGCCACGG  
 GCGGCCGCGGGTGGCGCTGCAGGTGGTGGGGAAGCCAGCCAGGAGAGCAAGTTGCTGTGGTTCATCCG  
 TGAGGACCAGGGCGGAGTGGAAAGCAGGGCGGATCATCTGCCAGCTACGACATGGAGTACCAGATT  
 GTTTTCGAGGGAGTGATAGGGAAAAGGACGTTCCGGAGAGATTGCCATTGATGACATTCGATAAGCACTG  
 ATGTCCCACTGGAGAAGTGCATGGAACCATCTCGGCTTTTGCAGGGGGCACCTCCTGCCAGGGACCGA  
 GCCACAGTGGACACGGTGCCATGCAGCCATCCCAGCCTACTGGTATTACGTAATGGCCGCGGGGGC  
 GCCGTGCTGGTGTGCTCCGTCGCGCTGGCCCTGGTGTCCACTACCACCGGTTCCGCTATGCGGCCA  
 AGAAGACCGATCACTCCATCACCTACAAAACCTCCCACTACACCAACGGGGCCCCCTGGCGGTGGAGCC  
 CACCCTAACCATTAAGCTAGAGCAAGACCGTGGCTCGCACTGC

**ACGCGTACGCGGCCGCTCGAG** - GFP Tag - **GTTTAA**

**Protein Sequence:** >RG210928 representing NM\_201267  
 Red=Cloning site Green=Tags(s)

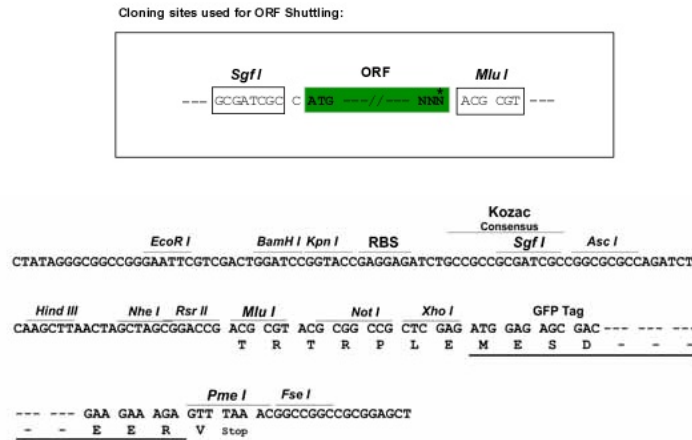
MDMFPLTWVFLALYFSRHQVRGQDPDPPCGRLNSKDAGYITSPGYPDYPSHQNCEWIVYAPEPNQKIVL  
 NFNPHFEIEKHDCKYDFIEIRDGSEADLLGKHCGNIAPPTIISSGSMLYIKFTSDYARQGAGFSRLRYE  
 IFKTGSEDCSKNFTSPNGTIESPGFPEKYPHNLDCTFTILAKPKMEIILQFLIFDLEHDPLQVGEQDCKY  
 DWLDIWDGIPHVGPLIGKYCGTKTPSELRSSTGILSLTFHTDMAVAKDGFSAARYLVHQEPLNFQCNVP  
 LGMESGRIANEQISASSTYSDGRWTPQQSRLHGDDNGWTPNLDNSKEYLQVDLRFMTLTAIATQGAISR  
 ETQNGYVYKSYKLEVSTNGEDWMVYRHGKNHKVVFQANNDATEVVLNKLHAPLLTRFVIRPQTWHSIAL  
 RLELFGCRVTDAPCSNMLGMLSGLIADSIASSTQEYLWSPAARLVSSRSGWFRIPQAQPGEELQV  
 DLGTPKTVKGVIIQGARGGDSITAVEARAFVRKFKVSYSLNGKDWEYIQDPRTQQPKLFEGNMHYDTPDI  
 RRFDPIPAQYVRVYPERWSPAGIGMRLEVLGCDWTDKPTVETLGPVKSEETTPYPTTEEEATECGENC  
 SFEDDKDLQLPSGFNCNDFLEPCGMYDHAKWLRTTWASSSPNDRTFPDDRNLRLQSDSQREGQYA  
 RLISPPVHLPRSPVCMFQYQATGGRGVALQVREASQESKLLWVIREQGGGEWKHGRIILPSYDMEYQI  
 VFEVIGKGRSGEIAIDDIRISTDVPLENCMEPISAFAGTLLPGTEPTVDTVPMQPIPAYWYVMAAGG  
 AVLVLVSVLALVLHYHRFRYAAKKTDHSITYKTSHYTNGAPLAVEPTLTIKLEQDRGSHC

TRTRPLE - GFP Tag - V

**Restriction Sites:**

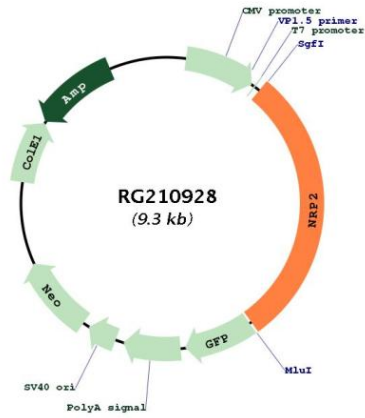
SgfI-MluI

**Cloning Scheme:**



<b>ACCN:</b>	NM_201267
<b>ORF Size:</b>	2703 bp
<b>OTI Disclaimer:</b>	<p>Due to the inherent nature of this plasmid, standard methods to replicate additional amounts of DNA in E. coli are highly likely to result in mutations and/or rearrangements. Therefore, OriGene does not guarantee the capability to replicate this plasmid DNA. Additional amounts of DNA can be purchased from OriGene with batch-specific, full-sequence verification at a reduced cost. Please contact our customer care team at <a href="mailto:custsupport@origene.com">custsupport@origene.com</a> or by calling 301.340.3188 option 3 for pricing and delivery.</p> <p>The molecular sequence of this clone aligns with the gene accession number as a point of reference only. However, individual transcript sequences of the same gene can differ through naturally occurring variations (e.g. polymorphisms), each with its own valid existence. This clone is substantially in agreement with the reference, but a complete review of all prevailing variants is recommended prior to use. <a href="#">More info</a></p>
<b>OTI Annotation:</b>	This clone was engineered to express the complete ORF with an expression tag. Expression varies depending on the nature of the gene.
<b>Components:</b>	The ORF clone is ion-exchange column purified and shipped in a 2D barcoded Matrix tube containing 10ug of transfection-ready, dried plasmid DNA (reconstitute with 100 ul of water).
<b>Reconstitution Method:</b>	<ol style="list-style-type: none"> <li>1. Centrifuge at 5,000xg for 5min.</li> <li>2. Carefully open the tube and add 100ul of sterile water to dissolve the DNA.</li> <li>3. Close the tube and incubate for 10 minutes at room temperature.</li> <li>4. Briefly vortex the tube and then do a quick spin (less than 5000xg) to concentrate the liquid at the bottom.</li> <li>5. Store the suspended plasmid at -20°C. The DNA is stable for at least one year from date of shipping when stored at -20°C.</li> </ol>
<b>RefSeq:</b>	<a href="#">NM_201267.1</a> , <a href="#">NP_957719.1</a>
<b>RefSeq Size:</b>	4148 bp
<b>RefSeq ORF:</b>	2706 bp
<b>Locus ID:</b>	8828
<b>UniProt ID:</b>	<a href="#">O60462</a>
<b>Cytogenetics:</b>	2q33.3
<b>Protein Families:</b>	Druggable Genome, Transmembrane
<b>Gene Summary:</b>	<p>This gene encodes a member of the neuropilin family of receptor proteins. The encoded transmembrane protein binds to SEMA3C protein {sema domain, immunoglobulin domain (Ig), short basic domain, secreted, (semaphorin) 3C} and SEMA3F protein {sema domain, immunoglobulin domain (Ig), short basic domain, secreted, (semaphorin) 3F}, and interacts with vascular endothelial growth factor (VEGF). This protein may play a role in cardiovascular development, axon guidance, and tumorigenesis. Multiple transcript variants encoding distinct isoforms have been identified for this gene. [provided by RefSeq, Jul 2008]</p>

Product images:



Circular map for RG210928