

Product datasheet for **RG210927**

LRRC41 (NM_006369) Human Tagged ORF Clone

Product data:

Product Type:	Expression Plasmids
Product Name:	LRRC41 (NM_006369) Human Tagged ORF Clone
Tag:	TurboGFP
Symbol:	LRRC41
Synonyms:	MUF1; PP7759
Mammalian Cell Selection:	Neomycin
Vector:	pCMV6-AC-GFP (PS100010)
E. coli Selection:	Ampicillin (100 ug/mL)



[View online »](#)

**ORF Nucleotide
Sequence:**

>RG210927 representing NM_006369
 Red=Cloning site Blue=ORF Green=Tags(s)

TTTTGTAATACGACTCACTATAGGGCGGCCGGAATTCGTCGACTGGATCCGGTACCGAGGAGATCTGCC
 GCC**CGATCGCC**

ATGGCGGCGCCGAGGCCTGGCGGCCCGGAGTTGCTGTTCTGTGAGGTAGCGGCGCAACGACCATGG
 AGGCCACGTCCCGGAGGCGGCCAGCGAAGAGCTCGGCCTCGGCCCAACGCTCCCCCGCCCTGTT
 CGAGCTGTGCGGGCGGGCGGTGAGCGCCATATGGGGTTCTGGAGAGCGGGGTGTGGCCCTCCAGGC
 CCAATACTTCAAAGCATCTACCTCTGCTCAATATATATACTTGGAGAGGATTGAGAACTGCCCTCA
 AGAAAGGCCTCTCAACTCAGGCCATCTGGCGCGACTCTGGGATGAAGTATGAAGACAAGGCCTCCAG
 TTTGAAAGTGTGACATGTTGGCGAGCCAAGTTTATGGAGGCCTTTTTTCCCATGTTCTACGTGGGACC
 ATTGATGTGCTTCTGACAGGCTCTTTGTGATCAGCGGTTCTCACCTCTTCTGCACAGCTCCCGCCATG
 TCCGACAGCTCACCATCTGTAACATGCTGCAGGGTGAACCGAGCTGGTGGCTGAGCCAAACCGCAGGGT
 TCTGGAGACCCTGGCCAGCTCCCTGCACACTCTCAAGTTCGCCACCTGTGTTCTGTATGTGGCTGCT
 CAGCAGTCACTTCGGCAGCTGTTGCATCAGCTCATTACCATGGGGCTGTCAAGTGTGCTGCTATACT
 CCTGGCCTGTGCCTGAGTCAGCCCTTTTCATCCTTATTCTCACCATGAGTGTGGCTTCTGGCAACCCAGG
 GCCTGGTGGCCACCCTGCCCTCTGTGGAGAGGCCTCCCGAGGCCGGGCCCATCCCGAGATGAAGGG
 TCCCTCTATTGGGCTCAGTCGGCCCCGCCGGATGCTGCTGAGCGATGTGCTGCAGCCCTGATGGCCA
 GCCGGCGTAAGAGTGAAGCAAGCAGATGCCAGAGCTGCACCTGCCACTCGGGTAACACGCCGGAGCAC
 ACAGGAGAGCTGACAGCAGGCGGAACAGACCTTAAGAGGGAGCTGCACCCCGAGCCACTCCCATGAG
 GCTCCTGGCACCAGCGGTACCTTCTGCTCCAGCAGCCACTCTCTGCCTCTTCTTCTACACTCTCAT
 ACAACGGGCACCAGCTAGCTCAGCCCCACAGCCTAAGCCCTAAAGCGTTTCAAGCGAGCTGACGGGAA
 GAAGGGTCTCGCACCCGTGAGGGCCTGGTGCAGAGTCTGAAGACCTGTATGACTTCGTTTTTATTGTG
 GCTGGCGAGAAGGAGGATGGCGAAGAGATGGAGATTGGGGAAGTGGCTTGTGGAGCTTGGATGGATCAG
 ATCCAGCTGCCTGGGGCTTCCAGCACTGGAAGCTTCAAAAGATTCCGCAGCATCTCCACTTGGAGCT
 ATTCACAGTTCCTCTCCACAGAGGCAGCCCTGACACTATGCCACTGCTGAGCTCCTGGGTGTCAGT
 GAGAGCTCACACTCTCTACAATGGCCTGGGCTTAACATCTCCGCCTGCTAGACAGCTGCGGGCCC
 TGTGAGCCAGGCTGGATGTCGCTCCGTGCCCTGCATCTCAGTGACCTGTTCTCACCACTGCCATCCT
 GGAGCTGACACGTGCTATCGTGCAGCACTGCCCTGCTACGGGTCTCTCTATTCTGTTGACCACCCA
 AGCCAGCGGGACAACCTGGTGTGCCAGGGAATGCAGGGCCCCTAGCCACATAATAGGCGATGAGGAGA
 TACCAGAAAACCTGGAGCAGTTGGAGATGGGATTTCCAGGGGAGCCAGCCAGCCCACTGCTGTG
 CTCCATTTCTGAAGGCCTCGGGTTCTCTGCAGCAGCTGTCCTGGATAGTGCCACCTTTGCCCTCTCCCGAG
 GATTTTGGGCTTGTGTTGCAAACACTCAAAGAGTACAACCTAGCCCTGAAAAGACTGAGCTTCCATGACA
 TGAATCTCGTACTGTGAGAGCGAGGTGCTCTTTTGTACAGAATCTGACTCTGCAAGAGATTACCTT
 CTCCTTCTGCCGTCTGTTTGAAGCGCCAGCCCAATTTCTGCCTGAGATGGTTGCTGCTATGAAGGGC
 AACTCCACTGAAGGGCCTCCGGCTGCCAGGGAACCGCTGGGGAATGCTGGCTGCTGGCCTTGGCAG
 ATGTTTTCTCAGAGGATTCATCTCTCTCTGTGAGCTGGACATCAGTCCAAGTGCATCAAGCCAGA
 TGGGCTTCTGGAGTTCGCCAAGCGGCTGGAGCGCTGGGGCCGTGGAGCCTTTGGTCACTGCGCCTCTTC
 CAAAACCTGGCTGGACCAGGATGCAGTACAGCCAGGGAAGCCATCCGGCGGCTCCGGGCTACCTGCCATG
 TGGTTAGCGACTCATGGACTCATCCAGGCCTTGCAGATTATGTTAGCACCATG

ACGCGTACGCGGCCGCTCGAG - GFP Tag - GTTTAA

Protein Sequence: >RG210927 representing NM_006369
 Red=Cloning site Green=Tags(s)

```

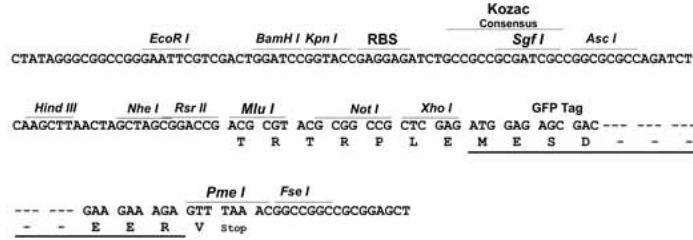
MAAPEAWRARSWFCEVAAATTMEATSREAAPAKSSASGPNAPPALFELCGRAVSAHMGVLESGVWALPG
PILQSIPLLLNIYYLERIEETALKKGLSTQAIWRRLWDELMKTRPSSLESVTCWRAKFMEAFFSHVLRGT
IDVSSDRRLCDQRFSPLLHSSRHVRQLTICNMLQGATELVAEPNRRVLETLASSLHTLKFRHLLFSDVAA
QQSLRQLLHQLIHHGAVSQVSLYSWPVESALFILILTMSAGFWQPGPGGPPCRLCGEASRGRAPSRDEG
SLLLGSRRPRRDAERCAAALMASRRKSEAKQMPRAAPATRVTRRSTQESLTAGGTDLKRHLHPPATSHE
APGTKRSPSAPAATSSASSTSSYKRAPASSAPQPKPLKRFKRAAGKKGARTRQGPGESEDLYDFVFIV
AGEKEDGEEMEIGEACGALDGDSPSCLGLPALEASQRFRSISTLELFTVPLSTEAAATLCHLLSSWVSL
ESLTLSYNGLGSNIFRLLDSLRLSGQAGCRLRALHLSDFSPLELTRAIVRALPLLRVLSIRVDHP
SQRDNPGVPGNAGPPSHIIGDEEIPENCLEQLEMGFPRGAQPAPLLCSILKASGSLQQLSLDSATFASPQ
DFGLVLQTLKEYNLALKRLSFHDMNLADCQSEVLFLLQNLTLQEITFSFCRLF EKRPAAQFLPEMVAAMKG
NSTLKGLRPLGNRLGNAGLLALADVFSSESSSLCQLDISSNCIKPDGLLEFAKRLERWGRGAFGHLRLF
QNWLDQDAVTAREAIRRLRATCHVVSDSWDSSQAFADYVSTM
  
```

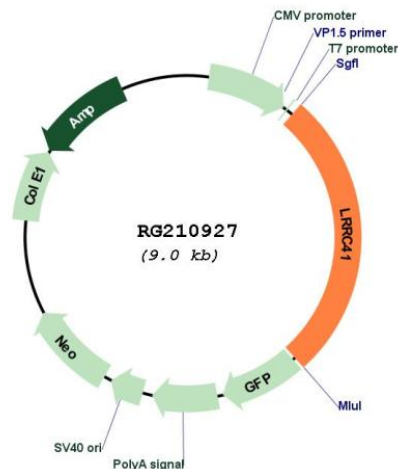
TRTRPLE - GFP Tag - V

Restriction Sites: Sgfl-MluI

Cloning Scheme:

Cloning sites used for ORF Shutting:



Plasmid Map:


ACCN: NM_006369

ORF Size: 2436 bp

OTI Disclaimer: The molecular sequence of this clone aligns with the gene accession number as a point of reference only. However, individual transcript sequences of the same gene can differ through naturally occurring variations (e.g. polymorphisms), each with its own valid existence. This clone is substantially in agreement with the reference, but a complete review of all prevailing variants is recommended prior to use. [More info](#)

OTI Annotation: This clone was engineered to express the complete ORF with an expression tag. Expression varies depending on the nature of the gene.

Components: The ORF clone is ion-exchange column purified and shipped in a 2D barcoded Matrix tube containing 10ug of transfection-ready, dried plasmid DNA (reconstitute with 100 ul of water).

Reconstitution Method:

1. Centrifuge at 5,000xg for 5min.
2. Carefully open the tube and add 100ul of sterile water to dissolve the DNA.
3. Close the tube and incubate for 10 minutes at room temperature.
4. Briefly vortex the tube and then do a quick spin (less than 5000xg) to concentrate the liquid at the bottom.
5. Store the suspended plasmid at -20°C. The DNA is stable for at least one year from date of shipping when stored at -20°C.

RefSeq: [NM_006369.4](#), [NP_006360.3](#)

RefSeq Size: 2960 bp

RefSeq ORF: 2439 bp

Locus ID: 10489

UniProt ID: [Q15345](#)

Cytogenetics: 1p34.1-p33

Domains: LRR_RI

Gene Summary: Probable substrate recognition component of an ECS (Elongin BC-CUL2/5-SOCS-box protein) E3 ubiquitin ligase complex which mediates the ubiquitination and subsequent proteasomal degradation of target proteins.[UniProtKB/Swiss-Prot Function]