

Product datasheet for **RG210908**

ASPRV1 (NM_152792) Human Tagged ORF Clone

Product data:

Product Type: Expression Plasmids
Product Name: ASPRV1 (NM_152792) Human Tagged ORF Clone
Tag: TurboGFP
Symbol: ASPRV1
Synonyms: ADLI; MUNO; SASP; SASPase; Taps
Mammalian Cell Selection: Neomycin
Vector: pCMV6-AC-GFP (PS100010)
E. coli Selection: Ampicillin (100 ug/mL)
ORF Nucleotide Sequence: >RG210908 representing NM_152792
 Red=Cloning site Blue=ORF Green=Tags(s)

TTTTGTAATACGACTCACTATAGGGCGGCCGGAATTCGTCGACTGGATCCGGTACCGAGGAGATCTGCC
 GCC**CGATCGCC**

ATGGGGAGCCAGGGGCCAGCCTAGGCATCAAAAAGGCTCTGCAGAGTGAACAGGCCACAGCACTGCCTG
 CCTCTGCCCCAGCAGTCAGCCAGCCGACCGCGCCTGCTCCCTCTGCTTGCCCAAGGCCGGCAAGTCAT
 CCCCCTCTGCTTCGAGAGGCCCGTTTTCCAGCGTGATTGCGCCGACACTGCTCTGTGGGTTTCTCTTC
 TTGGCGTGGGTTGCTGCTGAGGTTCCAGAGGAGAGCAGCAGGATGGCCGGGAGCGGAGCCAGGAGTGAGG
 AAGGCCCGGCAGCATGCCTTCGTCGCCGAACCTTTTGATGGGGCCAATGTCGTCCCAAACCTCTGGCT
 GCACAGCTTTGAAGTCATCAATGACCTCAACCATTGGGACCATATCACCAAGCTAAGGTTCTGAAAGAG
 TCCTCAGAGGAGAGGCCCTGGGTGCTACAATAGGCTCAGTCCCAGGACCAGGAGACTATGGGACTG
 TGAAAGAGGCCCTCTGAAGGCCTTTGGGGTCCCTGGGGTGCCTCCAGCCACCTGCCCAAAGAGATCGT
 CTTTGCCAACAGCATGGGTAAGGGCTACTATCTCAAGGGGAAGATTGGCAAAGTGCCCGTGGGTTCTG
 GTGGACTCTGGGGCCAGGTCTCTGTGGTCCACCCAACTTGTTGGGAGGAGGTCCTGATGGCGATCTGG
 ACACCTGCAGCCCTTTGAGAAATGTGGTAAAGGTGGCCAAATGGTCTGAAATGAAGATCCTGGGTGCTG
 GGATACAGCGGTGTCCTAGGCAAGCTGAAGCTGAAGGCACAGTTCCTAGTGCCCAATGCGAGTGCCGAG
 GAAGCCATCATTGGCACTGATGTGCTCCAGGACCACAATGCTATCCTGGACTTTGAGCACCGCACATGCA
 CCTGAAAGGGAAGAAGTTTCGCTTCTGCCTGTGGGAGGGTCCCTGGAAGATGAGTTTGACCTGGAGCT
 CATAGAGGAGGACCCCTCCTCAGAAGAAGGGCGGCAGGAGCTATCCAC

ACGCGTACGCGGCCGCTCGAG - GFP Tag - GTTTAA



[View online »](#)

Protein Sequence: >RG210908 representing NM_152792
 Red=Cloning site Green=Tags(s)

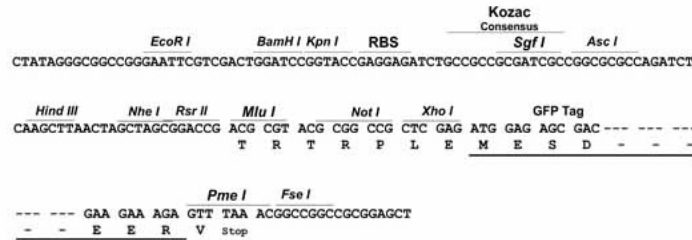
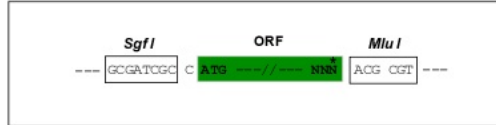
MGSPGASLGIKKALQSEQATALPASAPAVSQPTAPAPSCLPKAGQVIPALLREAPFSSVIAPTLLCGFLF
 LAWVAAEVPEESSRMAGSGARSEEGRRQHAFVPEPFDGANVVPNLWLHSFEVINDLNHWDHITKLRFLKE
 SLRGEALGVYNRLSPQDQGDYGTVEALLKAFGVPGAAPSHLPKEIVFANSMGKGYLLKGIKGVVPRFL
 VDSGAQVSVVHPNLWEEVTDGDLDTLQPFENVVKVANGAEMKILGVWDTAVSLGKLLKLAQFLVANASAE
 EAIIGTDVLDHNAILD FEHRTCTLKGGKFRLLPVGGGLEDEFDLELEIEDPSSEEGRQELSH

TRTRPLE - GFP Tag - V

Restriction Sites: SgfI-MluI

Cloning Scheme:

Cloning sites used for ORF Shuttling:



ACCN: NM_152792

ORF Size: 1029 bp

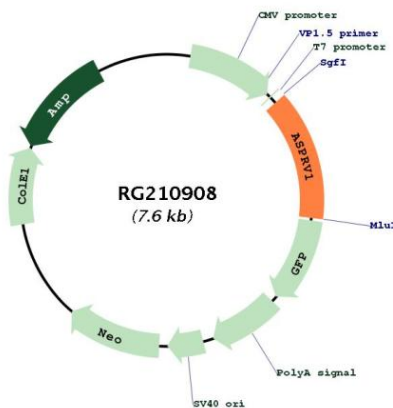
OTI Disclaimer: The molecular sequence of this clone aligns with the gene accession number as a point of reference only. However, individual transcript sequences of the same gene can differ through naturally occurring variations (e.g. polymorphisms), each with its own valid existence. This clone is substantially in agreement with the reference, but a complete review of all prevailing variants is recommended prior to use. [More info](#)

OTI Annotation: This clone was engineered to express the complete ORF with an expression tag. Expression varies depending on the nature of the gene.

Components: The ORF clone is ion-exchange column purified and shipped in a 2D barcoded Matrix tube containing 10ug of transfection-ready, dried plasmid DNA (reconstitute with 100 ul of water).

Reconstitution Method:	<ol style="list-style-type: none">1. Centrifuge at 5,000xg for 5min.2. Carefully open the tube and add 100ul of sterile water to dissolve the DNA.3. Close the tube and incubate for 10 minutes at room temperature.4. Briefly vortex the tube and then do a quick spin (less than 5000xg) to concentrate the liquid at the bottom.5. Store the suspended plasmid at -20°C. The DNA is stable for at least one year from date of shipping when stored at -20°C.
RefSeq:	NM_152792.1 , NP_690005.1
RefSeq Size:	2168 bp
RefSeq ORF:	780 bp
Locus ID:	151516
UniProt ID:	Q53RT3
Cytogenetics:	2p13.3
Protein Families:	Druggable Genome, Protease
Gene Summary:	Filaggrin is a structural protein that is crucial for in the development and maintenance of the skin barrier. This gene encodes a retroviral-like protease involved in profilaggrin-to-filaggrin processing. Expression is found primarily in the epidermis and inner root sheath of hair follicles. [provided by RefSeq, May 2017]

Product images:



Circular map for RG210908