

Product datasheet for **RG210899**

Epsin 2 (EPN2) (NM_148921) Human Tagged ORF Clone

Product data:

Product Type:	Expression Plasmids
Product Name:	Epsin 2 (EPN2) (NM_148921) Human Tagged ORF Clone
Tag:	TurboGFP
Symbol:	Epsin 2
Synonyms:	EHB21
Mammalian Cell Selection:	Neomycin
Vector:	pCMV6-AC-GFP (PS100010)
E. coli Selection:	Ampicillin (100 ug/mL)



[View online »](#)

ORF Nucleotide Sequence:

>RG210899 representing NM_148921
 Red=Cloning site Blue=ORF Green=Tags(s)

TTTTGTAATACGACTCACTATAGGGCGGCCGGGAATTCGTCGACTGGATCCGGTACCGAGGAGATCTGCC
 GCC**CGGATCGCC**

ATGACGACTTCGTCTATCAGACGGCAGATGAAAAACATCGTGAACAATTACTCAGAGGCAGAAATCAAAG
 TCCGGGAAGCCACTCCAATGACCCGTGGGGCCGTCCAGTTCTCTGATGACCGAGATTGCCGACCTGAC
 CTAACAACGTGGTGGCCTTCTCGGAGATCATGAGCATGGTGTGGAAGCGGCTGAATGACCATGGCAAGAAC
 TGGCGGCATGTGTACAAGGCGCTGACCCTGCTGGACTACCTCATCAAGACAGGCTCCGAACGTGTGGCC
 AGCAGTGCCGGGAGAACATCTTCGCCATCCAGACCCTGAAGGACTTCCAGTACATTGACCGAGATGGCAA
 GGACCAGGGCATCAATGTGCGTGAGAAGTCAAAGCAACTGGTGGCTCTCCTCAAGGACGAGGAACGGTTG
 AAGGCTGAGAGGGCCAGGCTCTCAAACCAAAGAGCGCATGGCCAGGTTGCCACTGGCATGGGCAGCA
 ACCAGATCACCTTGGGCGAGGCTCCAGCCAGCCCAACCTCTCCACCAGCCACTCGGAGCAGGAGTATGG
 CAAGGCCGGGGCTCCCCGGCTCTACCATGGCTCCACCTCCCCGCGAGTGTCTCCGAGCTGGAGCAA
 GCCCGGCCCCAGACTAGTGGAGAAGAGGAGCTTACAGTGCAGCTGGCACTTGCCATGAGCAGAGAAGTGG
 CTGAGCAGGAAGAAGCCCTCAGGCGGGGTGATGACCTCAGATTACAGATGGCCCTGGAAGAAAGCCGAAG
 GGACACAGTTAAAATCCAAAAAGAAAGAGCATGGCTCTCTCCACAGCAGACTACGCTGTTGGATTTA
 ATGGATGCTCTCCCCAGCTCGGGCCCCGCGGCCAGAAAGCAGAGCCCTGGGGCCCGTCAGCCTCCACTA
 ACCAGACCAACCCTGGGGCGGGCCAGCGGCTCCTGCGAGTACTTCAAGCCCTGGCCATCGTTTGGTAC
 CAAGCCAGCTGCCTCCATTGACCATGGGGGTGCCACTGGAGCCACCGACAATCTGTCCCAAGAAC
 TCGGACCCCTGGGAGCTTACAGCAGCCTGCCCTCCAGTGTGGGAAAAGAGCTTCTGACGCGTGGGGCG
 CAGTCTCCACCACCAAGCCGTGTCTGTCTGGGTCTTTGAGCTCTCAGTAATCTGAATGGTACAAT
 TAAAGATGACTTTTCTGAATTTGACAACCTTCGGACTTCAAAAAAACAGCCGAATCTGTGACCTCTCTG
 CCATCCAAAAAATGGAACCTACAGCCCTGACCCCTTTGAGTCTCAACCCTGACTGTCCGCTCAAGCA
 AGCCAGCAGTGCCCGAAAAACCTGAGTCTTCTGGGCCCAACGCGGCCCTGGTGAACCTGGACTC
 ACTGGTGACCAGGCTGCCCCACAGCCAGTCCCTCAACCCTTTCTGGCACCAGGTGCTCCCGCCACC
 TCGGCCCTGTTAACCTTTCCAGGTGAACCAGCCCGAGCGCTGACACTGAACCAGCTTCGGGGGAGCC
 CAGTCTGGGGACCAGCACATCCTTTGGCCTGGCCAGGAGTGGAGTCCATGGCTGTGGCTCGATGAC
 CTCCGCGGCCCCACAGCCAGCTCTGGGGCCACTGGTTCTCTCTGACACCCTGGGCCCTGCAATGATG
 AACATGGTGGCAGTGTGGGTATACCCCATCAGCAGCCAGGCCACTGGCACAACCAACCTTTCTCTTC
 TC

AG**CGGACCG**ACGCGTACGCGGCCGCTCGAG - GFP Tag - GTTTAA

Protein Sequence:

>RG210899 representing NM_148921
 Red=Cloning site Green=Tags(s)

MTTSSIRRQMKNIYNNYSEAEIKVREATSNDPWGPSSSLMTEIADLTYNVVFSEIMSMVWKRNDHGKN
 WRHVYKALTLLDYLIKTGSERVAQQCRENIFAIQTLKDFQYIDRDGKDQGINVREKSKQLVALLKDEERL
 KAERAQALKTKERMAQVATGMGSNQITFGRGSSQPNLSTSHSEQEYKAGGSPASYHGSTSPRVSELEQ
 ARPQTSGEELQLQLALAMSREVAEQEERLRGGDLRLQMALEESRRDVKIPKKKEHGSLLPQQTLLDL
 MDALPSSGPAQAEPWGPSASTNQTNPWGPAAPASTSDPWPSFGTKPAASIDPWGVP TGATAQSVKPN
 SDPWAASQQPASSAGKRASDAWGA VSTTKPVSVSGSFELF SNLNGTIKDDFSEFDNLRTSKKTAESVTS
 PSQNNGTTSPDPFESQPLTVASSKPSARKTPESFLGPNAALVNLDL VTRPAPPAQSLNPFLAPGAPAT
 SAPVNPQVNPQPLTLNQLRGSPLVLTSTSFPGPGVEMAVASMTSAAPQPALGATGSSLTPLGPAMM
 NMVGSVGIPPSAAQATGTTNPFL

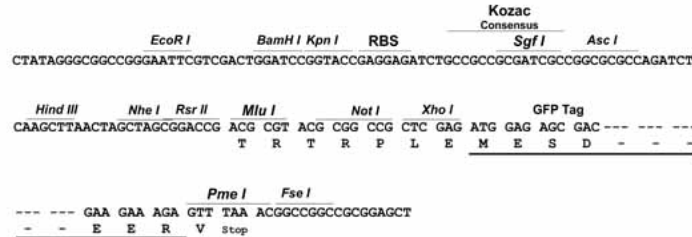
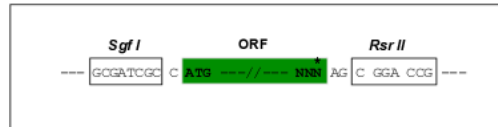
SGP**TRRRLE** - GFP Tag - V

Restriction Sites:

Sgfl-RsrII

Cloning Scheme:

Cloning sites used for ORF Shuttling:


ACCN: NM_148921

ORF Size: 1752 bp

OTI Disclaimer: The molecular sequence of this clone aligns with the gene accession number as a point of reference only. However, individual transcript sequences of the same gene can differ through naturally occurring variations (e.g. polymorphisms), each with its own valid existence. This clone is substantially in agreement with the reference, but a complete review of all prevailing variants is recommended prior to use. [More info](#)

OTI Annotation: This clone was engineered to express the complete ORF with an expression tag. Expression varies depending on the nature of the gene.

Components: The ORF clone is ion-exchange column purified and shipped in a 2D barcoded Matrix tube containing 10ug of transfection-ready, dried plasmid DNA (reconstitute with 100 ul of water).

Reconstitution Method:

1. Centrifuge at 5,000xg for 5min.
2. Carefully open the tube and add 100ul of sterile water to dissolve the DNA.
3. Close the tube and incubate for 10 minutes at room temperature.
4. Briefly vortex the tube and then do a quick spin (less than 5000xg) to concentrate the liquid at the bottom.
5. Store the suspended plasmid at -20°C. The DNA is stable for at least one year from date of shipping when stored at -20°C.

RefSeq: [NM_148921.2](#), [NP_683723.1](#)
RefSeq Size: 4643 bp

RefSeq ORF: 1755 bp

Locus ID: 22905

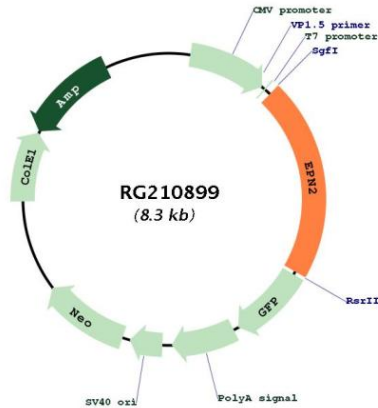
UniProt ID: [O95208](#)
Cytogenetics: 17p11.2

Domains: ENTH, UIM

Protein Pathways: Endocytosis

Gene Summary: This gene encodes a protein which interacts with clathrin and adaptor-related protein complex 2, alpha 1 subunit. The protein is found in a brain-derived clathrin-coated vesicle fraction and localizes to the peri-Golgi region and the cell periphery. The protein is thought to be involved in clathrin-mediated endocytosis. Alternate splicing of this gene results in multiple transcript variants encoding different isoforms. [provided by RefSeq, Jul 2008]

Product images:



Circular map for RG210899