

## Product datasheet for **RG210877**

### **RAB11FIP4 (NM\_032932) Human Tagged ORF Clone**

#### **Product data:**

Product Type:	Expression Plasmids
Product Name:	RAB11FIP4 (NM_032932) Human Tagged ORF Clone
Tag:	TurboGFP
Symbol:	RAB11FIP4
Synonyms:	FIP4-Rab11; RAB11-FIP4
Mammalian Cell Selection:	Neomycin
Vector:	pCMV6-AC-GFP (PS100010)
E. coli Selection:	Ampicillin (100 ug/mL)



[View online »](#)

**ORF Nucleotide Sequence:**

>RG210877 representing NM\_032932  
 Red=Cloning site Blue=ORF Green=Tags(s)

TTTTGTAATACGACTCACTATAGGGCGGCCGGGAATTCGTCGACTGGATCCGGTACCGAGGAGATCTGCC  
 GCC**CGGATCGCC**

ATGGCGGGCGCGCGGGCTGGTCGGGCGCCCCGCGGCTCTGCTGCGCTCCGTGCGCCGCTGCGCGAGG  
 TGTTTCGAGGTGTGCGGCCGCGACCCGACGGCTTCTGCGCGTGGAGCGGTGCGCGGCGCTCGGACTGCG  
 CTTTCGGCCAGGGCGAGGAGGTGAAAACTTGTGAAATATTTGGATCCCAACGACCTGGGGAGAATCAAC  
 TTCAAGGACTTTTCCGGGGGTGTTCCGCATGAAAGGTGCGAGGAGCTGCTGAAGGATGTGCTGTCGG  
 TGGAGAGCGCGGGACGCTGCCGTGCGGCCAGAGATCCAGACTGCGTGGAGCAGGGCAGCGAGGTAC  
 AGGCCCCACCTTTGCTGATGGCGAGCTCATCCCGAGGAACCCGGCTTTTTTCCGAGGACGAGGAGGAG  
 GCTATGACGCTGGCGCCACCTGAGGGCCCCAGGAGTTGTACACAGACAGCCCCATGGAGAGCACTCAGA  
 GCCTGGAGGGTCTGTCGGGAGTCTGCCGAGAAGGACGGGGACTTGGGGGCTGTTTCTGCCAGAAGA  
 CAAGTCCCTGGTCCACTCCATCCATGACGACCTCAGACCTTTTACACACTCCACCACCTCGCTCATC  
 AGCAATGAGGAGCAGTTTGAAGACTATGGGGAGGGTACGATGTGGACTGTGCCCCAGCAGCCCTTGCC  
 CCGATGATGAGACCAGGACCAACGTCTACTCGGACCTGGGGTCTTCGGTGTCTTCCAGTGCGGGGCAGAC  
 GCCTAGGAAAATGCGGCACGTGTACAACAGCAATTGCTAGATGTTTACTGCTCTCAATGCTGCAAGAAA  
 ATCAACCTGCTCAATGACTTGAAGCCCGACTGAAAACTGAAGGCCAACAGCCCCAACCGAAAGATCT  
 CCAGCAGCGCCTTTGGACGGCAGCTCATGCACAGCAGCAACTTCAGCAGCAGCAATGGCAGCACCGAAGA  
 CCTGTTCCGGGACAGCATTGACTCTTGCACAATGACATCACAGAGAAGGTAAGCTTCTGGAAAAGAAG  
 GTGACAGAGCTGGAGAATGACAGCCTGACCAATGGGGACCTGAAGAGCAAGCTGAAGCAAGAGAACACAC  
 AGCTGGTGCACAGGGTGCATGAGCTGGAGGAGATGGTGAAGGATCAGGAGACCACGGCCGAGCAGGCTCT  
 GGAGGAGGAGGCGCGGCCACCGCGAGGCTACGGCAAGCTGGAGAGGGAGAAGGCTACCGAGGTGGAG  
 CTGCTCAATGCCAGGTGACAGCTGGAGGAAGAAAATACAGAGCTTAGAACAACAGTACTCGGCTCA  
 AGTCTCAAACAGAGAACTGGATGAGGAGCGGCAGCGCATGTCTGACCGTCTGGAGGACACCAGCCTGCG  
 GCTCAAAGATGAGATGGACCTGTACAAGCGCATGATGGACAAGCTGCGACAGAACCAGCCTTGAGTCCAG  
 AAGGAGCGGGAGGCGACGAGGAGCTCATCGAGGACTTGCGAAGGAGCTGGAGCACCTGCAGATGTACA  
 AGCTGGACTGCGAGCGGCCAGGCGGGCCGAGTGCCTCTCTGGCCTAGGCGAGTTCAATGCCAGGGC  
 CCGCGAGGTGGAGCTCGAGCAGGAGTCAAGCGGCTCAAGCAGGAGAATTATAAGCTGCGGGATCAGAAC  
 GACGACTTGAATGGCAGATTTTGAAGCCTCAGCCTCTACGAAGCAAAAACTCTTTGCTGCCAGACTA  
 AAGCCCAGTCTCTGGCTGCAGAGATAGACACCGCCTCGCGGATGAGCTAATGGAAGCCCTGAAGGAGCA  
 GGAGGAGATCAACTTCCGGCTGAGGCAGTACATGGACAAGATTATCTCGCCATCTGGACCACAATCCC  
 TCCATCTCGAGATCAAACAC

**ACGCGT**ACGCGGCCGCTCGAG – GFP Tag – GTTTAA

**Protein Sequence:**

>RG210877 representing NM\_032932  
 Red=Cloning site Green=Tags(s)

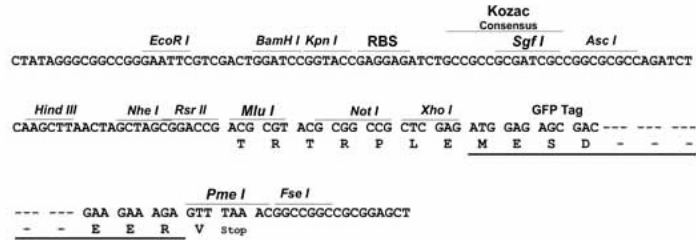
MAGGAGWSGAPAALLRSVRRRLREVFEVCGRDPDGFLLRVERVAALGLRFQGGEEVEKLVKYLDPNDLGRIN  
 FKDFCRGVFAMKGEELLKDVLSVESAGTLPCAPEIPDCVEQSEVTGPTFADGELIPREPGFFPEDEEE  
 AMTLAPPEGPQELYTDSPEMSTQSLGSEVSPAEKDGGLGGLFLPEDKSLVHTPSMTTSDLSTHSTSLI  
 SNEEQFEDYGEQDDVDCAPSSPCPDDETRTNVYSDLGSSVSSAGQTPRKMRRHVNSSELLDQVYCSQCCKK  
 INLLNDLEARLKNLKANSNPKISSTAFGRQLMHSSNFSSNGSTEDLFRDSIDSCDNDITEKVSFLEKK  
 VTELENDLSLNGDLKSKLKQENTQLVHRVHELEEMVKDQETTAEQALEEEARRHREAYGKLEREKATEVE  
 LLNARVQLEEENTELRTTVTRLKSKQTEKLDEERQMSDRLEDTSRLRKDEMDLYKRMMDKLRQNRLEFQ  
 KEREATQELIEDLRKELEHLQMYKLDCEPGRGRSASSGLGEFNARAREVELEHEVKRLKQENYKLRDQN  
 DDLNGQILSLSLYEAKNLFAAQTKAQLAAEIDTASRDELMELKEQEEINFRLRQYMDKIILAILDHNP  
 SILEIKH

**TRTRPLE** – GFP Tag – V

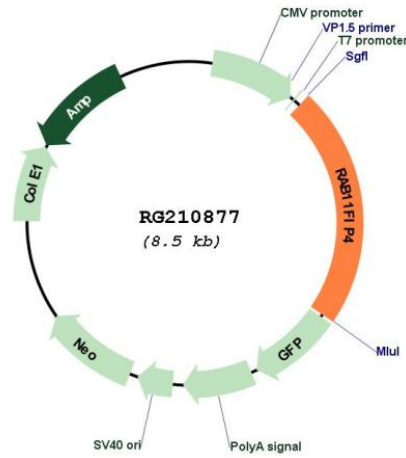
Restriction Sites: SgfI-MluI

Cloning Scheme:

Cloning sites used for ORF Shutting:



Plasmid Map:



ACCN: NM\_032932

ORF Size: 1911 bp

<b>OTI Disclaimer:</b>	The molecular sequence of this clone aligns with the gene accession number as a point of reference only. However, individual transcript sequences of the same gene can differ through naturally occurring variations (e.g. polymorphisms), each with its own valid existence. This clone is substantially in agreement with the reference, but a complete review of all prevailing variants is recommended prior to use. <a href="#">More info</a>
<b>OTI Annotation:</b>	This clone was engineered to express the complete ORF with an expression tag. Expression varies depending on the nature of the gene.
<b>Components:</b>	The ORF clone is ion-exchange column purified and shipped in a 2D barcoded Matrix tube containing 10ug of transfection-ready, dried plasmid DNA (reconstitute with 100 ul of water).
<b>Reconstitution Method:</b>	<ol style="list-style-type: none"><li>1. Centrifuge at 5,000xg for 5min.</li><li>2. Carefully open the tube and add 100ul of sterile water to dissolve the DNA.</li><li>3. Close the tube and incubate for 10 minutes at room temperature.</li><li>4. Briefly vortex the tube and then do a quick spin (less than 5000xg) to concentrate the liquid at the bottom.</li><li>5. Store the suspended plasmid at -20°C. The DNA is stable for at least one year from date of shipping when stored at -20°C.</li></ol>
<b>RefSeq:</b>	<a href="#">NM_032932.3</a> , <a href="#">NP_116321.2</a>
<b>RefSeq Size:</b>	8665 bp
<b>RefSeq ORF:</b>	1914 bp
<b>Locus ID:</b>	84440
<b>UniProt ID:</b>	<a href="#">Q86YS3</a>
<b>Cytogenetics:</b>	17q11.2
<b>Protein Pathways:</b>	Endocytosis
<b>Gene Summary:</b>	The protein encoded by this gene interacts with RAB11 and is thought to be involved in bringing recycling endosome membranes to the cleavage furrow in late cytokinesis. Hypoxic conditions can lead to an upregulation of the encoded protein and enhance the metastatic potential of hepatocellular carcinoma. [provided by RefSeq, Oct 2016]