

Product datasheet for **RG210857**

CLECL1 (NM_172004) Human Tagged ORF Clone

Product data:

Product Type: Expression Plasmids
Product Name: CLECL1 (NM_172004) Human Tagged ORF Clone
Tag: TurboGFP
Symbol: CLECL1
Synonyms: DCAL-1; DCAL1
Mammalian Cell Selection: Neomycin
Vector: pCMV6-AC-GFP (PS100010)
E. coli Selection: Ampicillin (100 ug/mL)
ORF Nucleotide Sequence: >RG210857 representing NM_172004
 Red=Cloning site Blue=ORF Green=Tags(s)

TTTTGTAATACGACTCACTATAGGGCGCCGGGAATTCGTCGACTGGATCCGGTACCGAGGAGATCTGCC
 GCC**CGATCGCC**

ATGGTTAGTAATTTCTTCCATGTCATACAAGTATTCGAGAAATCTGCTACCTTGATTAGTAAGACTGAAC
 ACATTGGTTTTGTCATTTATTTCATGGAGGAAGTCCACCACCCACTTGGGGAGCAGAAGGAAATTTGCCAT
 TTCAATTTACTTATCAGAAGTTTCTTTCAGAAATATGATTGTCCTTCAGTGGGACATCATTTGTGGTC
 TTCTCTCTTTTTGATCTGTGCAATGGCTGGAGATGTAGTCTACGCTGACATCAAACTGTTCCGACTT
 CCCGTTAGAACTCGCGTTTCCACTTCAGAGATCTGTTTCTTCACTTTTCTACTGTCCATAAATCATG
 TCCTGCCAAAGACTGGAAGGTGCATAAGGGAAAATGTTACTGGATTGCTGAACTAAGAAATCTTGGAAC
 AAAAGTCAAAATGACTGTGCCATAAACAATTCATATCTCATGGTGATTCAAGACATTACTGCTATGGTGA
 GATTTAACATT

ACGCGTACGCGGCCGCTCGAG - GFP Tag - GTTTAA

Protein Sequence: >RG210857 representing NM_172004
 Red=Cloning site Green=Tags(s)

MVSNFFHVIQVFEKSATLISKTEHIGFVIYSWRKSTTHLGSRRKFAISIYLSEVSLQKYDCPFSGTSFVV
 FSLFLICAMAGDVVYADIKTVRTPLELAFPLQRSVSFNFSTVHKSCPAKDWKVKHKCYWIAETKKS
 WNKSQNDCAINNSYLMVIQDITAMVRFNI

TRTRPLE - GFP Tag - V

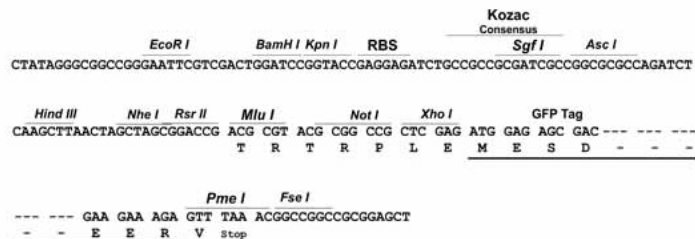
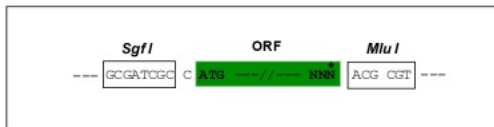
Restriction Sites: Sgfl-MluI



[View online »](#)

Cloning Scheme:

Cloning sites used for ORF Shutting:


ACCN: NM_172004

ORF Size: 501 bp

OTI Disclaimer: The molecular sequence of this clone aligns with the gene accession number as a point of reference only. However, individual transcript sequences of the same gene can differ through naturally occurring variations (e.g. polymorphisms), each with its own valid existence. This clone is substantially in agreement with the reference, but a complete review of all prevailing variants is recommended prior to use. [More info](#)
OTI Annotation: This clone was engineered to express the complete ORF with an expression tag. Expression varies depending on the nature of the gene.

Components: The ORF clone is ion-exchange column purified and shipped in a 2D barcoded Matrix tube containing 10ug of transfection-ready, dried plasmid DNA (reconstitute with 100 ul of water).

Reconstitution Method:

1. Centrifuge at 5,000xg for 5min.
2. Carefully open the tube and add 100ul of sterile water to dissolve the DNA.
3. Close the tube and incubate for 10 minutes at room temperature.
4. Briefly vortex the tube and then do a quick spin (less than 5000xg) to concentrate the liquid at the bottom.
5. Store the suspended plasmid at -20°C. The DNA is stable for at least one year from date of shipping when stored at -20°C.

RefSeq: [NM_172004.2](#), [NP_742001.1](#)
RefSeq Size: 649 bp

RefSeq ORF: 504 bp

Locus ID: 160365

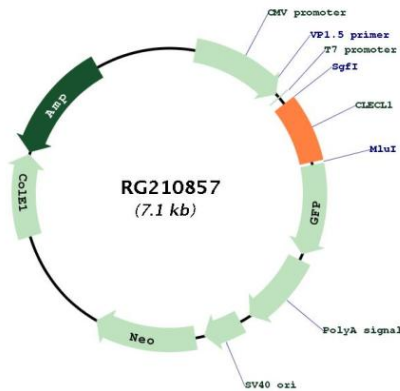
UniProt ID: [Q8IZS7](#)

Cytogenetics: 12p13.31

Protein Families: Druggable Genome

Gene Summary: This gene encodes a type II transmembrane, C-type lectin-like protein that is highly expressed on dendritic and B cells. This protein may act as a T-cell costimulatory molecule that enhances interleukin-4 production, and maybe involved in the regulation of the immune response. Alternatively spliced transcript variants encoding different isoforms have been found for this gene. [provided by RefSeq, Dec 2011]

Product images:



Circular map for RG210857