

Product datasheet for **RG210834**

ADAMTS5 (NM_007038) Human Tagged ORF Clone

Product data:

Product Type:	Expression Plasmids
Product Name:	ADAMTS5 (NM_007038) Human Tagged ORF Clone
Tag:	TurboGFP
Symbol:	ADAMTS5
Synonyms:	ADAM-TS 5; ADAM-TS5; ADAM-TS 11; ADAMTS-5; ADAMTS-11; ADAMTS11; ADMP-2
Mammalian Cell Selection:	Neomycin
Vector:	pCMV6-AC-GFP (PS100010)
E. coli Selection:	Ampicillin (100 ug/mL)



[View online »](#)

ORF Nucleotide Sequence:

>RG210834 representing NM_007038
 Red=Cloning site Blue=ORF Green=Tags(s)

TTTTGTAATACGACTCACTATAGGGCGGCCGGGAATTCGTCGACTGGATCCGGTACCGAGGAGATCTGCC
 GCC**CGGATCGCC**

ATGCTGCTCGGGTGGCGTCCCTGCTGCTGCGCGTTCCGCCTGCCCTGGCCGGTTCGGCCCGCCG
 CGACACCTGCCAGGATAAAGCCGGGACGCTCCGACTGCTGCAGCAGCCGCCAGCCCGCCGGCGCA
 GGGGAGGAGGTGCAGGAGCGAGCCGAGCCTCCCGGCCACCCGCACCCCTGGCGCAGCGCGCAGGAGC
 AAGGGGTGGTGCAGAACATCGACCAACTCTACTCCGGCGGCGCAAGGTGGGCTACCTCGTCTACGCGG
 GCGGCCGAGGTTCTCTTGGACCTGGAGCGAGATGGTTCGGTGGGCATTGCTGGCTTCGTGCCCGCAGG
 AGGCGGGACGAGTGCGCCCTGGCGCCACCGAGCCACTGCTTCTATCGGGGCACAGTGGACGCTAGTCCC
 CGCTCTCTGGCTGTCTTTGACCTCTGTGGGGTCTCGACGGCTTCTTCGCGGTCAAGCACGCGCTACA
 CCCTAAAGCCACTGCTGCGCGGACCCTGGGCGGAGGAAGAAAAGGGGCGCGTGTACGGGGATGGTCCGC
 ACGGATCTGCAGTCTACACCCGCGAGGGCTTCAGCTTCGAGGCCCTGCCGCCGCGGCCAGCTGCGAA
 ACCCCCGCGTCCACACCGGAGGCCACGAGCATGCTCCGGCGCACAGCAACCCGAGCGGACGCGCAGCAC
 TGGCCTCGCAGCTTTGGACCAGTCCGCTCTCTCGCCCGTGGGGCTCAGGACCGCAGAGCTGGTGGCG
 GCGGCGCGCCGCTCCATCTCCCGGGCCCGCCAGGTGGAGCTGCTTCTGGTGGCTGACGCGTCCATGGCG
 CGGTTGTATGGCCGGGGCCTGCAGCATTACCTGCTGACCTGGCCTCCATCGCCAATAGGCTGTACAGCC
 ATGCTAGCATCGAGAACCACATCCGCCTGGCCGTGGTGAAGTGGTGGTCTAGGCGACAAGGACAAGAG
 CCTGGAAGTGAGCAAGAACGCTGCCACCACACTCAAGAACTTTGCAAGTGGCAGCACCAACACAACCAG
 CTGGGAGATGACCATGAGGAGCACTACGATGCAGCTATCTGTTACTCGGGAGGATTTATGTGGGCATC
 ATTCATGTGACACCCCTGGGAATGGCAGCTTGGGACCATATGTTCTCCAGAGCGCAGCTGTGCTGAT
 TGAAGACGATGGCCTCCACGAGCCTTCACTGTGGCTCACGAAATCGGACATTTACTTGGCCTCTCCCAT
 GACGATTCCAAATCTGTGAAGAGACCTTTGGTCCACAGAAGATAAGCGCTTAATGTCTTCCATCCTTA
 CCAGCATTGATGCATCTAAGCCCTGGTCCAAATGCACTTCAGCCACCATCACAGAATTCCTGGATGATGG
 CCATGGTAACTGTTTGTGGACCTACCACGAAAGCAGATCCTGGGCCCGAAGAACTCCCAGGACAGACC
 TACGATGCCACCCAGCAGTGCAACCTGACATTCGGGCCTGAGTACTCCGTGTGCCCGCATGGATGCT
 GTGCTCGCTGTGGTGTGCTGTGGTACGCCAGGGCCAGATGGTCTGTCTGACCAAGAAGTGCCTGCGGT
 GGAAGGGACGCCCTGTGGAAGGGGAGAATCTGCCTGCAGGCAAAATGTGTGGACAAAACCAAGAAAAA
 TATTATCAACGTCAAGCCATGGCAACTGGGGATCTTGGGGATCTGGGGCCAGTGTTCGCTCATGTG
 GAGGAGGAGTGCAGTTTGCCTATCGTCACTGTAATAACCCCTGCTCCAGAAACAACGGACGCTACTGCAC
 AGGGAAGAGGGCCATCTACCGCTCCTGCAGTCTCATGCCCTGCCACCCAATGGTAAATCATTTTCGTCAT
 GAACAGTGTGAGGCCAAAAATGGCTATCAGTCTGATGCAAAAGGAGTCAAACTTTTGTGGAATGGGTTT
 CCAAATATGCAGGTGTCTGCCAGCGGATGTGTGCAAGCTGACCTGCAGAGCCAAGGGCACTGGCTACTA
 TGTGGTATTTTCCAAAGGTGACCGATGGCACTGAATGTAGGCCGTACAGTAATTCGCTCGCTCCGG
 GGAAGTGTGTGAGAAGTGGCTGTGACGGCATATTGGCTCAAAGCTGCAGTATGACAAGTGGGAGTAT
 GTGGAGGAGACAACCTCCAGCTGTACAAAGATTGTTGGAACCTTTAATAAGAAAAGTAAGGGTTACTACTGA
 CGTGGTGAGGATTCTGAAGGGCAACCCACATAAAAGTTCGACAGTTCAAAGCCAAAGACCAGACTAGA
 TTCCTGCTATTTAGCCCTGAAAAAGAAAAACGGTGAGTACCTTATCAATGGAAAGTACATGATCTCCA
 CTTCCAGAGACTATCATTGACATCAATGGAACAGTCATGAACTATAGCGGTTGGAGCCACAGGGATGACTT
 CCTGCATGGCATGGGCTACTCTGCCACGAAGGAAATCTAATAGTGCAGATTCTTGAACAGACCCCACT
 AAACCATAGATGTCCGTTATAGCTTTTTTGTCCCAAGAAGTCCACTCCAAAAGTAAACTCTGTCACTA
 GTCATGGCAGCAATAAAGTGGGATCACACACTTCGACGCCGAGTGGGTACGGGCCCATGGCTCGCCTG
 CTCTAGGACCTGTGACACAGGTTGGCACACCAGAACGGTGCAGTCCAGGATGGAACCGGAAGTTAGCA
 AAAGATGTCCTCTCTCCCAAAGGCCTTCTGCGTTTAAGCAATGCTTGTGAAGAAATGT

AGCGGACCGACGCGTACGCGGCCGCTCGAG – GFP Tag – GTTTAA

Protein Sequence: >RG210834 representing NM_007038
 Red=Cloning site Green=Tags(s)

```

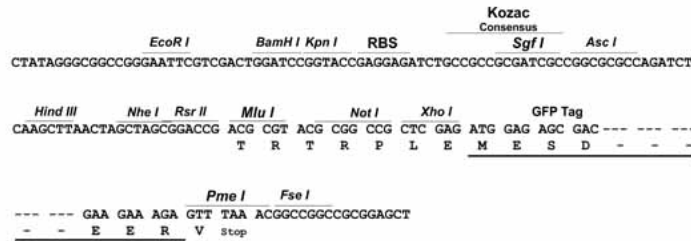
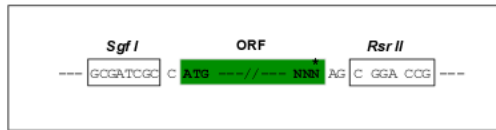
  MLLGWASLLLCARFLPLAAVGPAAATPAQDKAGQPPTAAAAAQRPRRQGEVQERAEPGHPHPLAQRRRS
  KGLVQNIQDQLYSGGKVGYL VYAGRRFLLDLERDGSVGIAGFVPAGGGTAPWRHRSHCFYRGTVDASP
  RSLAVFDLCGGLDGF FAVKHARYTLKPLL RGPWAEEEKGRVYGDGSARILHVYTRREGFSFEALPPRASCE
  TPASTPEAHEHAPAHSNPSGRAALASQLLDQSALSPAGGSGPQTWRRRRRSISRARQVELLLVADASMA
  RLYGRGLQHYLLTLASIANRLYSHASIENHIRLAVVKVVVLGDKDKSLEVSKNAATTLKNFKWQHQHNO
  LGDDHEEHYDAAILFTREDLCGHHSCDTLGMADVGTICSPERSCAVIEDDGLHAAFTVAHEIGHLLGLSH
  DDSKFCEETFGSTEDKRLMSSILTSIDASKPWSKCTSATITEFLDDGHGNCLLDLPRKQILGPEELPGQT
  YDATQQCNLTFGPEYSVCPGMDVCARLWCAVVRQGMVCLTKKLPAVEGTPCGKGRICLQKCVDKTKKK
  YYSTSSHGNWGSWGSWGQCSRSCGGGVQFAYRHCNNPAPRNNGRYCTGKRAIYRSCSLMPCPPNGKSRFH
  EQCEAKNGYQSDAKGVKTFVEWVPKYAGVLPADVCKLTCRAKGTGYVVVSPKVTGTECRPYSNSVCVR
  GKCVRTGCDGIIGSKLQYDKCGVCGDNSCTKIVGTFNKKSKGYTDVVRIPGATHIKVRQFKAKDQTR
  FTAYLALKKKNGEYLINGKYMISETIIDINGTVMNYSWSHRDFLHGMGYSATKEILIVQILATDPT
  KPLDVRYSFFVPPKSTPKVNSVTSHGSKVGSHTSQPQWVTGPWLACSRCTDTGWHTRTVQCQDGNRKLK
  KGCP LSQRPSAFKQCLLKKC
  
```

SGPTRRRLE - GFP Tag - V

Restriction Sites: SgfI-RsrII

Cloning Scheme:

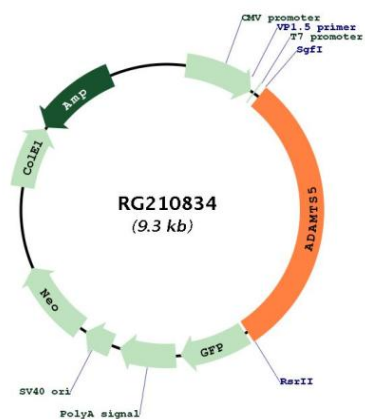
Cloning sites used for ORF Shuttling:



ACCN: NM_007038

ORF Size:	2790 bp
OTI Disclaimer:	The molecular sequence of this clone aligns with the gene accession number as a point of reference only. However, individual transcript sequences of the same gene can differ through naturally occurring variations (e.g. polymorphisms), each with its own valid existence. This clone is substantially in agreement with the reference, but a complete review of all prevailing variants is recommended prior to use. More info
OTI Annotation:	This clone was engineered to express the complete ORF with an expression tag. Expression varies depending on the nature of the gene.
Components:	The ORF clone is ion-exchange column purified and shipped in a 2D barcoded Matrix tube containing 10ug of transfection-ready, dried plasmid DNA (reconstitute with 100 ul of water).
Reconstitution Method:	<ol style="list-style-type: none">1. Centrifuge at 5,000xg for 5min.2. Carefully open the tube and add 100ul of sterile water to dissolve the DNA.3. Close the tube and incubate for 10 minutes at room temperature.4. Briefly vortex the tube and then do a quick spin (less than 5000xg) to concentrate the liquid at the bottom.5. Store the suspended plasmid at -20°C. The DNA is stable for at least one year from date of shipping when stored at -20°C.
RefSeq:	NM_007038.2 , NP_008969.1
RefSeq Size:	9046 bp
RefSeq ORF:	2793 bp
Locus ID:	11096
UniProt ID:	Q9UNA0
Cytogenetics:	21q21.3
Domains:	tsp_1, Reprolysin, ACR
Protein Families:	Druggable Genome, Protease, Secreted Protein
Gene Summary:	This gene encodes a member of the ADAMTS (a disintegrin and metalloproteinase with thrombospondin motifs) protein family. Members of the family share several distinct protein modules, including a propeptide region, a metalloproteinase domain, a disintegrin-like domain, and a thrombospondin type 1 (TS) motif. Individual members of this family differ in the number of C-terminal TS motifs, and some have unique C-terminal domains. The encoded preproprotein is proteolytically processed to generate the mature enzyme. This enzyme contains two C-terminal TS motifs and functions as an aggrecanase that cleaves aggrecan, a major proteoglycan of cartilage, and may mediate cartilage destruction in osteoarthritis. [provided by RefSeq, Feb 2016]

Product images:



Circular map for RG210834