

## Product datasheet for **RG210814**

### **RCE1 (NM\_001032279) Human Tagged ORF Clone**

#### Product data:

**Product Type:** Expression Plasmids  
**Product Name:** RCE1 (NM\_001032279) Human Tagged ORF Clone  
**Tag:** TurboGFP  
**Symbol:** RCE1  
**Synonyms:** FACE2; RCE1A; RCE1B  
**Mammalian Cell Selection:** Neomycin  
**Vector:** pCMV6-AC-GFP (PS100010)  
**E. coli Selection:** Ampicillin (100 ug/mL)  
**ORF Nucleotide Sequence:** >RG210814 representing NM\_001032279  
**Red=Cloning site Blue=ORF Green=Tags(s)**

TTTTGTAATACGACTCACTATAGGGCGGCCGGAATTCGTCGACTGGATCCGGTACCGAGGAGATCTGCC  
GCC**CGATCGCC**

ATGGCGCGCTGGGCGGGATGGGCTGCGACTGCTGTCCGGTGTCCGGCCGGAGCGGCCGCCGAGTCGG  
CGGCGCTGGGCGGCCTGGGCCCGGGCTGTGCTGCTGGGTGTGAGTGTCTCCTGCCTCAGCCTCGCCTG  
CTCCTACGTGGGAGCCTCTACGTCTGGAAGAGCGAACTGCCAGGGACCATCCCGCGGTATCAAGCGA  
CGCTTACCAGCGTCTGGTGGTGTCCAGTCTCTACCCCTGTGCGTGTCTGAGGGAACCTCACAG  
GCATCCAGCCAGGCACATCCCTGCTCACCTGATGGGCTTCAGGCTGGAGGGCATTTCAGCGCGCGCT  
GCTGCCCTGTTGCTGACCATGATTCTTTCTGGGCCCACTGATGCAGCTCTCTATGGATTGCCCTTGT  
GACCTGGCAGATGGGCTGAAGTTGTCCTGGCCCCCGCTCCTGGGCCCGCTGCCTCACAGACATGCGTT  
GGCTGCGGAACCAAGTGATCGCCCCGCTGACAGAGGAGCTGGTGTCCGGGCTGTATGCTGCCATGTT  
AGCACCCTGATGGGCTGGGCCCTGCTGTGTTACCTGCCCGCTCTTTTTGGAGTTGCCATTTTCAC  
CATATTATTGAGCAGTGCCTTCGCCAGAGCAGCGTGGGGAACATCTTCTGTCTGCTGCGTTCCAGT  
TCTCTACACAGTGTCTTCGGTGCCTACACTGCTTTCCTTTCATCCGCACAGGACACCTGATTGGGC  
GGTCTCTGCCATTCTTCTGCAATTACATGGGTTTCCAGCTGTTTGGCGGCCCTGGAGCACCCACAG  
AGGCGGCCCTGCTGGCAGGCTATGCCCTGGGTGTGGACTCTTCTGCTTCTGCTCCAGCCCCTCACGG  
ACCCCAAGCTCTACGGCAGCCTTCCCCTTGTGTGCTTTTGGAGCGGGCAGGGGACTCAGAGGCTCCCCT  
GTGCTCC

**ACGCGT**ACGCGGCCGCTCGAG - GFP Tag - GTTTAA



[View online »](#)

**Protein Sequence:** >RG210814 representing NM\_001032279  
Red=Cloning site Green=Tags(s)

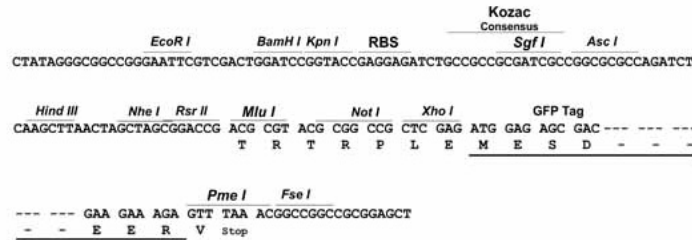
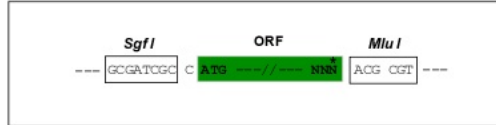
MAALGGDGLRLLSVSRPERPPESAALGGLGPLCCWVSVFSCSLACSYVGSLYVWKSELPRDHPAVIKR  
 RFTSVLVVSSLSPCLVLLWREL TGIQPGTSL TLMGFRLEGI FPAALLPLLL TMILFLGPLMQLSMDPC  
 DLADGLKVV LAPRSWARCLTDMRWLRNQVIAPL TEELVFRACMLPMLAPCMGLGPAVFTCP LFFGVAHFH  
 HIIEQLRFRQSSVGNIFLSAAFQFSYTA VFGAYTAF LFIRTGHLIGPVLCHSFCNYMGFP AVCAALEHPQ  
 RRPLLAGYALGVGLFLLLLQPLTDPKLYGSLPLCVLLERAGDSEAPLCS

TRTRPLE - GFP Tag - V

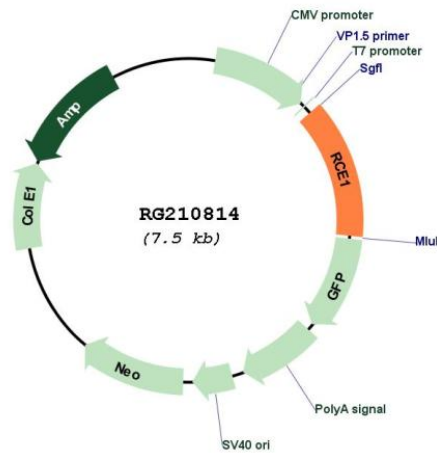
**Restriction Sites:** SgfI-MluI

**Cloning Scheme:**

Cloning sites used for ORF Shuttling:



**Plasmid Map:**



**ACCN:** NM\_001032279

**ORF Size:** 675 bp

<b>OTI Disclaimer:</b>	The molecular sequence of this clone aligns with the gene accession number as a point of reference only. However, individual transcript sequences of the same gene can differ through naturally occurring variations (e.g. polymorphisms), each with its own valid existence. This clone is substantially in agreement with the reference, but a complete review of all prevailing variants is recommended prior to use. <a href="#">More info</a>
<b>OTI Annotation:</b>	This clone was engineered to express the complete ORF with an expression tag. Expression varies depending on the nature of the gene.
<b>Components:</b>	The ORF clone is ion-exchange column purified and shipped in a 2D barcoded Matrix tube containing 10ug of transfection-ready, dried plasmid DNA (reconstitute with 100 ul of water).
<b>Reconstitution Method:</b>	<ol style="list-style-type: none"><li>1. Centrifuge at 5,000xg for 5min.</li><li>2. Carefully open the tube and add 100ul of sterile water to dissolve the DNA.</li><li>3. Close the tube and incubate for 10 minutes at room temperature.</li><li>4. Briefly vortex the tube and then do a quick spin (less than 5000xg) to concentrate the liquid at the bottom.</li><li>5. Store the suspended plasmid at -20°C. The DNA is stable for at least one year from date of shipping when stored at -20°C.</li></ol>
<b>RefSeq:</b>	<a href="#">NM_001032279.1</a> , <a href="#">NP_001027450.1</a>
<b>RefSeq Size:</b>	1485 bp
<b>RefSeq ORF:</b>	678 bp
<b>Locus ID:</b>	9986
<b>UniProt ID:</b>	<a href="#">Q9Y256</a>
<b>Cytogenetics:</b>	11q13.2
<b>Protein Families:</b>	Protease, Transmembrane
<b>Gene Summary:</b>	This gene encodes an integral membrane protein which is classified as a member of the metalloproteinase family. This enzyme is thought to function in the maintenance and processing of CAAX-type prenylated proteins. [provided by RefSeq, Jul 2008]