

Product datasheet for **RG210808**

LILRA1 (NM_006863) Human Tagged ORF Clone

Product data:

Product Type:	Expression Plasmids
Product Name:	LILRA1 (NM_006863) Human Tagged ORF Clone
Tag:	TurboGFP
Symbol:	LILRA1
Synonyms:	CD85I; LIR-6; LIR6
Mammalian Cell Selection:	Neomycin
Vector:	pCMV6-AC-GFP (PS100010)
E. coli Selection:	Ampicillin (100 ug/mL)



[View online »](#)

ORF Nucleotide Sequence:

>RG210808 representing NM_006863
 Red=Cloning site Blue=ORF Green=Tags(s)

TTTTGTAATACGACTCACTATAGGGCGGCCGGAATTCGTCGACTGGATCCGGTACCGAGGAGATCTGCC
 GCC**GCGATCGCC**

ATGACCCCATCGTCACAGTCTGATCTGTCTCAGGCTGAGTCTGGGCCCCCGACCCACGTGCAGGCAG
 GGACCCTCCCAAGCCCACTCTGGGCTGAGCCAGGCTCTGTGATCACCCAGGGAGTCCCGTGACCCT
 CTGGTGTGAGGGATCCTGGAGACCCAGGAGTACCGTCTGTATAGAGAAAAGAAAACAGCACCCCTGGATT
 ACACGGATCCCACAGGAGATTGTGAAGAAGGGCCAGTTCCCCATCCCATCCATCACCTGGGAACACACAG
 GGCGGTATCGCTGTTTCTACGGTAGCCACACTGCAGGCTGGTCAGAGCCAGTGACCCCTGGAGCTGGT
 GGTGACAGGAGCCTACATCAAACCCACCCTCTCAGCTCTACCCAGCCCTGTGGTACCTCAGGAGGGAAC
 GTGACCCTCCATTGTGTCTCACAGGTGGCATTGGCAGCTTATTCTGTGTAAGGAAGGAGAAGATGAAC
 ACCACAATGCCTGAACACAGCCCCGTACCCATGGGTGGTCCCGGGCCATCTTCTCTGTGGGCCCGT
 GAGCCCGAGTCGAGGTGGTACAGGTGCTATGCTTATGACTCGAAGTCTCCCATGTGTGGTCTCTA
 CCCAGTGATCTCCTGGAGCTCCTGGTCTAGGTGTTTCTAAGAAGCCATCACTCTCAGTGACCCAGGTC
 CTATAGTGGCCCTGGGAGAGCCTGACCCTCCAGTGTGTTTCTGATGTGAGCTACGACAGATTTGTTCT
 GTATAAGGAGGGAGAACGTGACTTCTCCAGCTCCCTGGCCACAGCCCAAGGCTGGGCTCTCCAGGCC
 AACTTCACCTGGGCCCTGTGAGCCGCTCTACGGGGCCAGTACAGATGCTCCGGTGCATAACAACCTCT
 CCTCCGAGTGGTCCGCCCCAGCGACCCCTGGACATCCTGATCGCAGGACAGTCCCGTGGCAGACCCTT
 CATCTCGGTGCATCCGGGCCACCGTGGCCTCAGGAGAGAACGTGACCTGCTGTGTGAGTATGGGG
 CCGTCCACACTTTCCTTCTGACCAAGGCGGAGCAGCTGATGCCCCCTCCGTCTCAGATCAATACAGC
 AATATCCTAAGTACCAGGCTGAATCCCTATGAGTCTGTGACCTCAGCCACTCGGGGACCTACAGGTG
 CTACGGCTCACTCAGCTCAACCCCTACCTGCTGTCTCACCCAGTACTCCCTGGAGCTCATGGTCTCA
 GGAGCAGCTGAGACCCTCAGCCACCACAAAACAAGTCCGATTCCAAGGCTGGAGCAGCTAACACCTCA
 GCCCATCAAAAACAAGACTGCCTCACACCCCAAGATTACACAGTGGAGAATCTCATCCGCATGGGCAT
 AGCTGGCTTGGTCTGGTGGTCTCGGGATTCTGCTATTTGAGGCTCAGCACAGCCAGAGAAGCCTC

ACGCGTACGCGGCCGCTCGAG – GFP Tag – GTTTAA

Protein Sequence:

>RG210808 representing NM_006863
 Red=Cloning site Green=Tags(s)

MTPIVTVL ICLRLSLGPRTHVQAGTLPKPTLWAEPSVITQGSPVTLWCQGILETQEYRLYREKKTAPWI
 TRIPQEI VKKGQFPIPSITWEHTGRYRCFYGSHTAGWSEPSDPLELVVTGAYIKPTLSALPSPVVTSGGN
 VTLHCVSQVAFGSFILCKEGEDHPQCLNSQPRTHGWSRAIFSVGPVSPSRRWSYRCYAYDSNSPHVWSL
 PSDLLELLVLGVSKKPSLSVQPGPIVAPGESLTLQCVSDVSYDRFVLYKEGERDFLQLPGPQPQAGLSQA
 NFTLGPVRSYGGQYRC SGAYNLSSEWSAPSDPLDIL IAGQFRGRPFISVHPGPTVASGENVTLLCQSWG
 PFHTFLLTKAGAADAPLRLRSIHEYPKYQAEFPMSPVTSAHSGTYRCYGSLSNPYLLSHPSDSLELMVS
 GAAETLSPQNKSDSKAGAANTLSPSQNK TASHPQDYTVENLIRMGIAGLVLVVLGILLFEAQHSQRSL

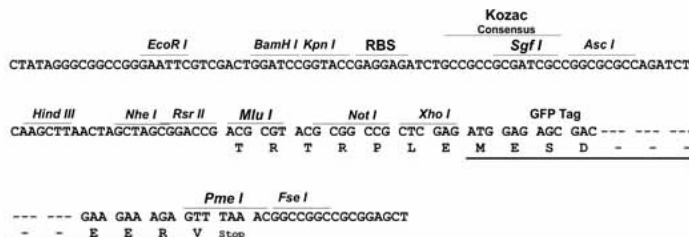
TRTRPLE – GFP Tag – V

Restriction Sites:

Sgfl-MluI

Cloning Scheme:

Cloning sites used for ORF Shutting:


ACCN: NM_006863

ORF Size: 1467 bp

OTI Disclaimer: The molecular sequence of this clone aligns with the gene accession number as a point of reference only. However, individual transcript sequences of the same gene can differ through naturally occurring variations (e.g. polymorphisms), each with its own valid existence. This clone is substantially in agreement with the reference, but a complete review of all prevailing variants is recommended prior to use. [More info](#)

OTI Annotation: This clone was engineered to express the complete ORF with an expression tag. Expression varies depending on the nature of the gene.

Components: The ORF clone is ion-exchange column purified and shipped in a 2D barcoded Matrix tube containing 10ug of transfection-ready, dried plasmid DNA (reconstitute with 100 ul of water).

Reconstitution Method:

1. Centrifuge at 5,000xg for 5min.
2. Carefully open the tube and add 100ul of sterile water to dissolve the DNA.
3. Close the tube and incubate for 10 minutes at room temperature.
4. Briefly vortex the tube and then do a quick spin (less than 5000xg) to concentrate the liquid at the bottom.
5. Store the suspended plasmid at -20°C. The DNA is stable for at least one year from date of shipping when stored at -20°C.

RefSeq: [NM_006863.4](#)
RefSeq Size: 1910 bp

RefSeq ORF: 1470 bp

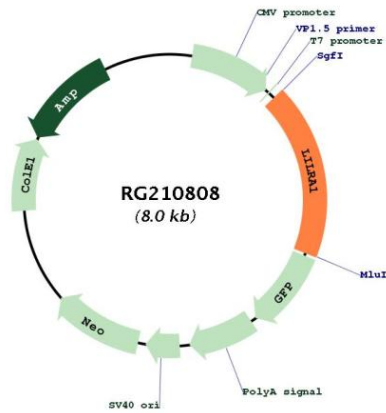
Locus ID: 11024

UniProt ID: [O75019](#)

Cytogenetics: 19q13.42

Gene Summary: This gene encodes an activating member of the leukocyte immunoglobulin-like receptor (LIR) family, which is found in a gene cluster at chromosomal region 19q13.4. The encoded protein is predominantly expressed in B cells, interacts with major histocompatibility complex class I ligands, and contributes to the regulation of immune responses. Alternative splicing results in multiple transcript variants encoding different isoforms. [provided by RefSeq, May 2013]

Product images:



Circular map for RG210808