

Product datasheet for **RG210800**

UBE4B (NM_006048) Human Tagged ORF Clone

Product data:

Product Type:	Expression Plasmids
Product Name:	UBE4B (NM_006048) Human Tagged ORF Clone
Tag:	TurboGFP
Symbol:	UBE4B
Synonyms:	E4; HDNB1; UBOX3; UFD2; UFD2A
Mammalian Cell Selection:	Neomycin
Vector:	pCMV6-AC-GFP (PS100010)
E. coli Selection:	Ampicillin (100 ug/mL)
ORF Nucleotide Sequence:	>RG210800 representing NM_006048 Red=Cloning site Blue=ORF Green=Tags(s)

TTTTGTAATACGACTCACTATAGGGCGGCCGGAATTCGTCGACTGGATCCGGTACCGAGGAGATCTGCC
GCC**CGATCGCC**

ATGGAGGAGCTGAGCGCTGATGAGATTCGACGGAGGCGCCTTGCACGACTTGCTGGTGGACAGACCTCTC
AGCCAACCACCCACTCACCTCTCCCAGAGGGAGAACCCTCCGGGGCCTCCCATAGCGGCATCAGCCCC
AGGACCCTCTCAGAGTCTTGGTCTCAATGTCCACAACATGACCCAGCTACCTCCCAATAGGTGCATCA
GGAGTAGCCCATCGAAGCCAGAGCAGTGAAGGAGTCAGTTCTCTCAGCAGCTCGCCCTCTAATAGCCTTG
AAACGCAATCTCAGTCTCTCTCACGTTCCAGAGCATGGATATCGATGGTGTCTCATGTGAGAAAAGCAT
GTCCCAGGTGGATGTGGATTGAGGAATTGAAAACATGGAGGTTGATGAAAATGATCGAAGAGAAAAGCGG
AGCCTCAGTGATAAGGAGCCTTCTCGGGCCCTGAAGTGTCTGAAGAGCAGGCCTTACAGCTGGTCTGTA
AGATCTTCCGTGTCTCTTGAAGGACCGGGACAGAGATGTCATCTTTCTTTCTTTCTTTCTGCACAGTT
TAAGCAGAACCCAAAAGAAGTATTCTCCGATTTAAGGACTTGATTGGCCAGATTTAATGGAAGTGCTA
ATGATGTCCACTCAGACCAGAGATGAAAACCCATTTGCCAGTCTGACAGCCACATCACAGCCAATTGCTG
CAGCAGCACGGTCACCAGACAGAAATCTTTGCTAAACTGGCTCCAATCCAGGAACAAGCCCCATGTT
CTGCAGCGTGGCTTCTTTGGTGCCAGCTCTTTGTCTAGTTTGGGAGCCTCTGGTGGAGCAAGTAATTGG
GATTCCTACAGTGACCATTTACCATTGAAACCTGCAAAGAGACAGATATGCTGAACCTACCTCATCGAGT
GTTTCGACCGAGTTGGAATAGAGGAAAAAAGCACCAAAGATGTGCAGCCAGCCAGCAGTCAAGCCAGCT
TCTGAGCAACATCCGCTCACAGTGCATATCCATACTGCTTTAGTACTACAAGGCTCCCTAACACAGCCC
AGGTCTTGCAGCAGCCGTCCTTCTAGTGCCGTATATGCTGTGTAGGAATCTCCCATATGGCTTCATTC
AGGAACTGGTGAAGCAACTCACCAGGATGAAGAAGTGTCAAGCAGATATTTATCCCCATTTACAAGG
CCTGGCTCTTGTGCCAAAGAGTCTCCCTCGACAGTACTTTAAATACCCCTCATGGCACTAGGT
GAGCTCTGTGAAACCAAGTTTGGGAAGACACCCCTGTGTCAATTTGGTTGCTTCTTTCGGGTTGTGGT
TGCCGAAATCCTTAAGTCTGGCTGTGGCGGGAGCTGCAGAGACTCTTACTTAGGGCTTTCTTTAG
CTTCTCAGTCTTTCAGAAAGATGATGTTAAAGTGGTTGAAAAACTTCTCAGGGCTGCCATTACCTG



[View online >](#)

GAAAACACTCGTGTGGTTAGCCAATCATTGCAGCATTACTTAGAGCTCGGAAGGCAAGAGCTTTTTAAGA
TTCTGCATAGTATTTTGTAAATGGCGAAACCCGTGAGGCTGCTCTCAGTTACATGGCGGCTGTCGTCAA
TGCCAATATGAAGAAAGCACAGATGCAGACAGATGATAGATTGGTGTCTACAGATGGATTATGTGAAT
TTCCTTTGGGACTGCAGCAGCTAAGTACAAAAATCAAGTTAGAAAACAGTTGATCCCACGTATATTTTC
ACCCAAGATGTCGGATTACTCTTCCCAATGATGAGACGCGTGTGAATGCAACGATGGAAGATGTGAATGA
CTGGCTGACTGAACTCTATGGCGATCAGCCTCCATTTCTGAGCCGAAATTCCTACGGAGTGCTTCTTT
CTCACCTGCATGCTACCACCTCTCTATTCTGCCTAGTTGCCGTCGCTATATCCGCAGACTCCGGGCTA
TCCGGGAGCTCAATAGAAGTGTAGAAGATTTGAAAAATAATGAAAGCCAATGGAAGATTCCCCACTGGC
AACTAGACACCGCGAAATGCTGAAGCGCTGAAAACTCAGCTTAAGAACTGGTACGGTGAAGGCTGT
GCTGATGCTGGCCTACTTGACGAGAGCTTCTGAGAAGATGTCTGAATTTTTATGGCCTTCTCATTACAGC
TGCTGCTCCGCATCCTGGACCCGCATATCCCGATATAACACTGCCTTTAAATTCAGATGTCCCAAGGT
ATTTGCAGCGTTGCCTGAGTTTTATGTAGAAGATGTTGCAGAATTTTTATTTTTATTGTACAATACTCT
CCCCAGGCGTTTATGAGCCCTGACTCAGGATATTGTGATGTTCCCTGTTGTGATGTTGTGCAACCAGA
ACTACATCCGAAACCCATATTTGGTGGCCAACTGGTAGAAGTCATGTTTATGACCAACCCTGCTGTTCA
GCCACGAACCCAGAAGTTTTTTGAAATGATTGAGAACCATCCTCTCTCCACCAAGTTGTTGGTACCTTCC
CTGATGAAGTTTTATACAGATGTTGAGCATACCGGAGCCACCAGTGAGTTTTATGACAAGTTCACAATTC
GCTATCATATTAGCACCATTTTTAAAAGCCTTTGGCAAAACATAGCTCACCATGGCACCTTTATGGAGGA
GTTCAACTCCGGGAAGCAGTTTGTTCGCTATATAAACATGTTGATAAACGACACGACGTTTTTGTGCTCGAT
GAAAGTCTGGAGTCTCTGAAGCGAATCCATGAAGTGCAGGAAGAGATGAAGAACAAGAACAGTGGGACC
AGTTGCCCCGGGATCAGCAGCAGGCTCGTCAGTCTCAGCTTGCTCAGGATGAGCGTGTGTCCCGCTTTA
CCTCGCCCTGGCCACCGAAACCGTGGACATGTTCCACATCCTCACGAAGCAGGTCCAGAAGCCCTTCCCTC
AGACCGGAGCTTGACCCCGATTGGCTGCAATGCTGAACTTTAACTTTCAGCAACTTTGTGGCCCAAGT
GCCGTGACCTGAAAGTTGAAAACCTGAGAAATACGGCTTTGAACCAAAGAAGCTTTGGACCAACTGAC
GGATATTTACTTACAGCTGGACTGTGCTCGGTTCCGCGAAAGCCATTGCTGACGACCAGAGATCCTACAGT
AAGGAATTGTTTGAAGAAGTTATTTCAAAGATGCGGAAGGCAGGGATCAAATCCACAATAGCAATAGAAA
AATTTAAGCTGCTCGCCGAGAAAGTGGAGGAGATAGTGGCCAAGAACGCACGCGCAGAAATCGACTACAG
CGACGCTCCTGATGAGTTCAGAGACCCTCTGATGGACACCCTCATGACAGACCCCGTGGGCTGCCCTCT
GGCACCATCATGGACCGCTCCATCATCTGCGGCACCTGCTCACTCCCCACGGACCCCTTCAACCGGC
AGACGCTGACAGAGAGCATGCTGGAACCAAGTGCCAGAAGTAAAGAGCAGATTAGGCGTGGATGAGAGA
GAAACAGAACAGCGATCAC

AGCGGACCGACGCGTACGCGGCCGCTCGAG - GFP Tag - GTTTAA

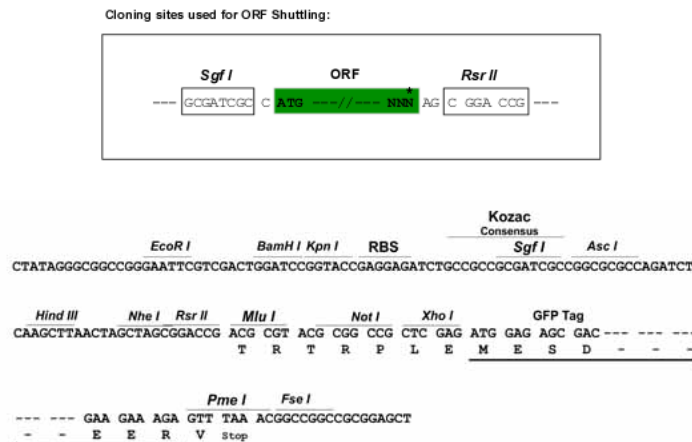
Protein Sequence: >RG210800 representing NM_006048
 Red=Cloning site Green=Tags(s)

```

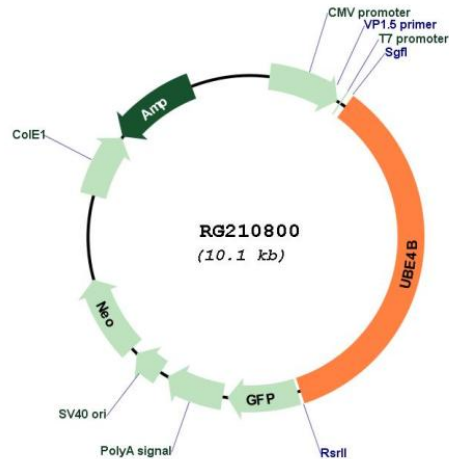
MEELSADEIRRRRLARLAGGQTSQPTTPLTSPQRENPPGPPPIAASAPGPSQSLGLNVHNMTPATSPIGAS
GVAHRSQSSEGVSSLSSSPSNSLETQSQSLSRSQSMDIDGVSCSEKSMSQVDVDSGIENMEVDENRRREKR
SLSDKEPSSSGPEVSEEQALQLVCKIFRVSWKDRDRDVIIFLSSLQAQFKQNPKEVFSDFKDLIGQILMEVL
MMSTQTRDENPFASLTATSQPIAAAARSPDRNLLNLTGSNPGTSPMFCSVASFGASSLSSLGASGGASNW
DSYSDHFTIETCKETDMLNYLIECFDRVGIEEKKAPKMCSPAVSQLLSNIRSQCISHTALVYLGSLTQP
RSLQQPSFLVPYMLCRNLPYGFIQELVRTTHQDEEVFKQIFIPILQGLALAAKECSLSDSYFKYPLMALG
ELCETKFGKTHPVCNLVASLRLWPKSLSPGCGRELQRLSYLGAFFSFSVFAEDDVKVVKEYFSGPAITL
ENTRVVSQLQHYLELGRQELFKILHSILLNGETREAAALSYMAAVVNANMKAQMOTDRLVSTDFGMLN
FLWVLQQLSTKIKLETVDPTYIFHPRCRITLPNDETRVNATMEDVNDWLTLYGDQPPFSEPKFPTCEFF
LTLHAHHL SILPSCRRYIRRLRAIRELNRTVEDLKNNSQWKDSPLATRHREMLKRCKTQLKKLVRCAC
ADAGLLDESFLRRLNLFYGLLIQLLLRILDPAYPDITLPLNSDVPKVF AALPEFYVEDVAEFLFFIVQYS
PQALYEPCTQDIVMFLVVMLCNQNYIRNPYLAKLVEVMFMTNPAVQPRTKQFFEMIENHPLSTKLLVPS
LMKFYTDVEHTGATSEFYDKFTIRYHISTIFKSLWQNI AHHGTFMEEFN SGKQFVRYINMLINDTFLLD
ESLESLKRIHEVQEEMKNKEQWDQLPRDQQARQSQLAQDERVRSYLAALATETVDMFHILTQVQKPF
RPELGPRLAAMLNFNLQQLCGPKCRDLKVENPEKYGFEPKLLDQLTDIYLQLDCARFAKAIADDQRSYS
KELFEEVISKMRKAGIKSTIAIEKFKLLAEKVEEIVAKNARAEIDYSDAPDEFDRDPLMDTMDTPVRLPS
GTIMDRSII LRHLLNSPTDPFNRQTLTESMLEVPPELKEIQAWMREKQNSDH
  
```

SGPTRRRLE - GFP Tag - V

Restriction Sites: SgfI-RsrII
Cloning Scheme:



Plasmid Map:



ACCN: NM_006048

ORF Size: 3519 bp

OTI Disclaimer: The molecular sequence of this clone aligns with the gene accession number as a point of reference only. However, individual transcript sequences of the same gene can differ through naturally occurring variations (e.g. polymorphisms), each with its own valid existence. This clone is substantially in agreement with the reference, but a complete review of all prevailing variants is recommended prior to use. [More info](#)

OTI Annotation: This clone was engineered to express the complete ORF with an expression tag. Expression varies depending on the nature of the gene.

Components: The ORF clone is ion-exchange column purified and shipped in a 2D barcoded Matrix tube containing 10ug of transfection-ready, dried plasmid DNA (reconstitute with 100 ul of water).

Reconstitution Method:

1. Centrifuge at 5,000xg for 5min.
2. Carefully open the tube and add 100ul of sterile water to dissolve the DNA.
3. Close the tube and incubate for 10 minutes at room temperature.
4. Briefly vortex the tube and then do a quick spin (less than 5000xg) to concentrate the liquid at the bottom.
5. Store the suspended plasmid at -20°C. The DNA is stable for at least one year from date of shipping when stored at -20°C.

RefSeq: [NM_006048.5](#)

RefSeq Size: 5512 bp

RefSeq ORF: 3522 bp

Locus ID: 10277

UniProt ID: [O95155](#)

Cytogenetics: 1p36.22

Domains: U-box

Protein Pathways: Ubiquitin mediated proteolysis

Gene Summary: The modification of proteins with ubiquitin is an important cellular mechanism for targeting abnormal or short-lived proteins for degradation. Ubiquitination involves at least three classes of enzymes: ubiquitin-activating enzymes, or E1s, ubiquitin-conjugating enzymes, or E2s, and ubiquitin-protein ligases, or E3s. This gene encodes an additional conjugation factor, E4, which is involved in multiubiquitin chain assembly. This gene is also the strongest candidate in the neuroblastoma tumor suppressor genes. Alternatively spliced transcript variants encoding distinct isoforms have been found for this gene. [provided by RefSeq, Jul 2008]