

## Product datasheet for **RG210798**

### CLEC4G (NM\_198492) Human Tagged ORF Clone

#### Product data:

Product Type:	Expression Plasmids
Product Name:	CLEC4G (NM_198492) Human Tagged ORF Clone
Tag:	TurboGFP
Symbol:	CLEC4G
Synonyms:	DTTR431; LP2698; LSEctin; UNQ431
Mammalian Cell Selection:	Neomycin
Vector:	pCMV6-AC-GFP (PS100010)
E. coli Selection:	Ampicillin (100 ug/mL)
ORF Nucleotide Sequence:	>RG210798 representing NM_198492 Red=Cloning site Blue=ORF Green=Tags(s)

TTTTGTAATACGACTCACTATAGGGCGGCCGGAATTCGTCGACTGGATCCGGTACCGAGGAGATCTGCC  
GCC**CGATCGCC**

ATGGACACCACCAGGTACAGCAAGTGGGGCGGCAGCTCCGAGGAGGTCCCCGGAGGGCCCTGGGGACGCT  
GGGTGCACTGGAGCAGGAGACCCCTCTTCTGGCCCTGGCTGTCCTGGTCACCACAGTCTTTGGGCTGT  
GATTCTGAGTATCCTATTGTCCAAGGCCTCCACGGAGCGCGGGCGCTGCTTGACGGCCACGACCTGCTG  
AGGACAAACGCCCTCGAAGCAGACGGCGGCCTGGGTGCCCTGAAGGAGGAGGTCCGAGACTGCCACAGCT  
GCTGCTCGGGGACGACGGCGCAGCTGCAGACCACGCGCGGAGCTTGGGGAGGGCGAGGCGAAGCTGAT  
GGAGCAGGAGAGCGCCCTGCGGGAAGTGCCTGAGCGCGTGACCCAGGGCTTGGCTGAAGCCGGCAGGGGC  
CGTGAGGACGTCCGCACTGAGCTGTTCCGGGCGCTGGAGGCCGTGAGGCTCCAGAACAACCTCTGCGAGC  
CGTGCCCCACGTCGTGGCTGTCTTCGAGGGCTCCTGCTACTTTTTCTCTGTGCCAAAGACGACGTGGGC  
GGCGGCGCAGGATCACTGCGCAGATGCCAGCGCACCTGGTGATCGTTGGGGCCCTGGATGAGCAGGGC  
TTCCTCACTCGGAACACGCGTGGCCGTGGTTACTGGCTGGGCCTGAGGGCTGTGCCCATCTGGGCAAGG  
TTCAGGGCTACCAGTGGGTGGACGGAGTCTCTCAGCTTCAGCCACTGGAACAGGGAGAGCCCAATGA  
CGCTTGGGGGCGGAGAACTGTGTATGATGCTGCACACGGGGCTGTGGAACGACGACCCGTGTGACAGC  
GAGAAGGACGGCTGGATCTGTGAGAAAAGGCACAACTGC

AG**CGGACCG**ACGCGTACGCGGCCGCTCGAG - GFP Tag - GTTTAA



[View online »](#)

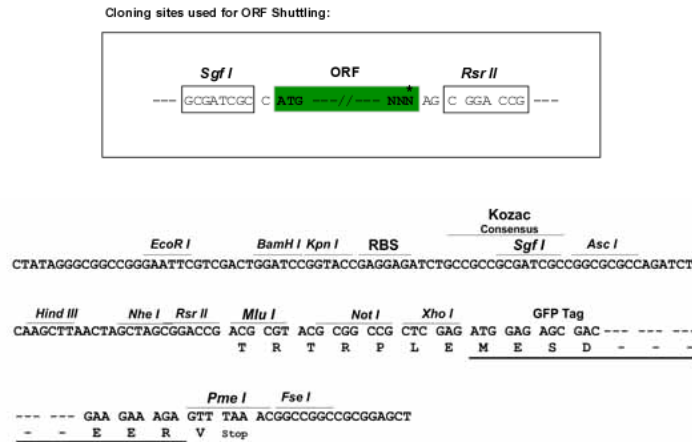
**Protein Sequence:** >RG210798 representing NM\_198492  
 Red=Cloning site Green=Tags(s)

MDTTRYSKWGSSEEVPGGPWGRVWHWSRRPLFLALAVLVTTVLWAVILSILLSKASTERAALLDGHDLL  
 RTNASKQTAALGALKKEVGDCHSCCSGTQAQLQTTRAELGEAQAKLMEQESALRELREVRTQGLAEAGR  
 REDVRELFRALAVRLQNNSCPEPCPTSWLSFEGSCYFFSVPKTTWAAAQDHCADASAHLVIVGGLDEQG  
 FLTRNTRGRGYWLGRAVRHLGKVGQYQVWDGVSLSFSHWNQGEPNDAWGRENVMMLHTGLWNDAPCDS  
 EKDGWICEKRHNC

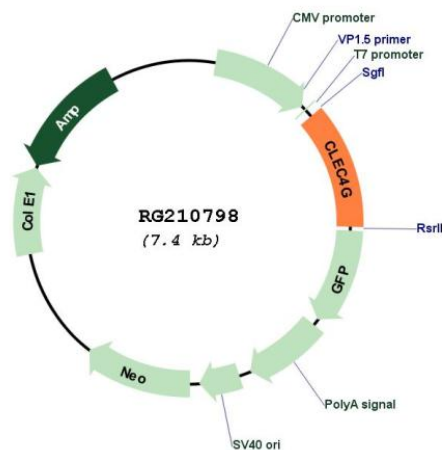
SGPTRRRLE - GFP Tag - V

**Restriction Sites:** SgfI-RsrII

**Cloning Scheme:**



**Plasmid Map:**



**ACCN:** NM\_198492

**ORF Size:** 879 bp

<b>OTI Disclaimer:</b>	The molecular sequence of this clone aligns with the gene accession number as a point of reference only. However, individual transcript sequences of the same gene can differ through naturally occurring variations (e.g. polymorphisms), each with its own valid existence. This clone is substantially in agreement with the reference, but a complete review of all prevailing variants is recommended prior to use. <a href="#">More info</a>
<b>OTI Annotation:</b>	This clone was engineered to express the complete ORF with an expression tag. Expression varies depending on the nature of the gene.
<b>Components:</b>	The ORF clone is ion-exchange column purified and shipped in a 2D barcoded Matrix tube containing 10ug of transfection-ready, dried plasmid DNA (reconstitute with 100 ul of water).
<b>Reconstitution Method:</b>	<ol style="list-style-type: none"><li>1. Centrifuge at 5,000xg for 5min.</li><li>2. Carefully open the tube and add 100ul of sterile water to dissolve the DNA.</li><li>3. Close the tube and incubate for 10 minutes at room temperature.</li><li>4. Briefly vortex the tube and then do a quick spin (less than 5000xg) to concentrate the liquid at the bottom.</li><li>5. Store the suspended plasmid at -20°C. The DNA is stable for at least one year from date of shipping when stored at -20°C.</li></ol>
<b>RefSeq:</b>	<a href="#">NM_198492.3</a>
<b>RefSeq Size:</b>	1355 bp
<b>RefSeq ORF:</b>	882 bp
<b>Locus ID:</b>	339390
<b>UniProt ID:</b>	<a href="#">Q6UXB4</a>
<b>Cytogenetics:</b>	19p13.2
<b>Protein Families:</b>	Druggable Genome, Transmembrane
<b>Gene Summary:</b>	This gene encodes a glycan-binding receptor and member of the C-type lectin family which plays a role in the immune response. C-type lectin receptors are pattern recognition receptors located on immune cells that play a role in the recognition and uptake of both self and non-self glycoproteins as well as mediating cell adhesion, glycoprotein clearance, and cell signaling functions. This gene's protein binds complex-type N-glycans of the viral envelope proteins of Ebola virus, West Nile filovirus, and SARS coronavirus, but not HIV or hepatitis C virus. In mouse, this protein has been shown to recognize activated T-cells and to negatively regulate T-cell receptor-mediated signalling. It also acts as a novel, liver-specific regulator of NK cell-mediated immunity in mouse. Multiple transcript variants encoding different isoforms have been found for this gene. [provided by RefSeq, Apr 2020]