

Product datasheet for **RG210796**

CHST3 (NM_004273) Human Tagged ORF Clone

Product data:

Product Type:	Expression Plasmids
Product Name:	CHST3 (NM_004273) Human Tagged ORF Clone
Tag:	TurboGFP
Symbol:	CHST3
Synonyms:	C6ST; C6ST1; HSD
Mammalian Cell Selection:	Neomycin
Vector:	pCMV6-AC-GFP (PS100010)
E. coli Selection:	Ampicillin (100 ug/mL)



[View online »](#)

ORF Nucleotide Sequence:

>RG210796 representing NM_004273
 Red=Cloning site Blue=ORF Green=Tags(s)

TTTTGTAATACGACTCACTATAGGGCGGCCGGAATTCGTCGACTGGATCCGGTACCGAGGAGATCTGCC
 GCC**GCGATCGCC**

ATGGAGAAAGGACTCACTTTGCCCCAGGACTGCCGGACTTTGTGCACAGCCTGAAGATGAGAAGCAAAT
 ACGCCCTTTTCTGGTTTTGTGGTGATAGTTTTGTCTTCATCGAAAAGGAAAAATAAATCATATCAAG
 GGTCTCAGACAAGCTGAAGCAGATTCCCAAGCTCTAGCAGATGCCAACAGCACCAGCCAGCCCTGATC
 TTAGCTGAGAACGCATCTCTTGTCCCTGAGCGAGCTCGATTACGCCTTCTCCAGCTTTCAGAGCCGTC
 TCCGCAACCTCAGCTTGCAGCTGGGCGTGGAGCCAGCCATGGAGGCCGAGGGGAGGAAGAGGAAGAGCA
 GAGAAAGGAGGAGGCCGCCAGACCGGCCGTGGCGGGGCCCGGCCACGTGCTGCTCATGGCCACC
 ACGCGCACCGGCTCCTCGTTCTGGGCGAGTCTTCAACCAGCAGGGCAACATCTTCTACCTTTCGAGC
 CGTGTGGCACATCGAGCGCACAGTGTCTTCGAGCCGGGGGCCCAACGCCGGGGCTCGGCCCTGGT
 GTACCGGACGTGCTCAAGCAGCTTCTCTGTGCGACCTGTACGTGCTGGAGCACTTCATCACGCCGCTG
 CCCGAGGACCACCTGACTCAGTTCATGTTCCGCCGGGGCTCCAGCCGCTCCCTGTGCGAGGACCCGCT
 GTACGCCCTTCGTCAGAAGGTCTTCGAGAAGTACCACTGCAAGAACCAGCCGCTGCGGCCCCCTCAACGT
 GACGCTGGCCGAGAGGCTGCCGCCGCAAGGAGCACATGGCCCTCAAGCGGTGCGCATCCGGCAGCTG
 GAGTTCCTGCAGCCGCTGGCCGAGGACCCCGCTGGACTGCGCGTCATCCAGCTGGTGCAGGACCCCC
 GGGCCGTGCTGGCCTCGCGCATGGTGGCCTTCGCCGCAAGTATAAGACCTGGAAGAAGTGGTGGACGA
 CAGGGCCAGGACGGCTGAGGGAAGAGGAGGTGACGCGGCTGCGGGCAACTGCGAGAGCATCCGCTG
 TCCGCGGAGCTGGGGTGCAGCAGCCCGCTGGCTGCGGGCCGCTACATGCTGGTGCCTACGAGGACG
 TGGCAGCGGGCCGCTGCAGAAGGCCCGGAGATGTACCGCTTCGCCGGCATCCCTGACCCCGAAGT
 GGAAGACTGGATCCAAAAGAACACGCAGCGGCCACGACGGCAGCGGCATCTACTCCACGAGAAGAAC
 TCCTCGGAGCAGTTCGAGAAGTGGCGTTCAGCATGCCCTTCAAGCTGGCCAGGTGGTGCAGGCCGCT
 GCGGCCCTGCCATGCGCCTTTCGGCTACAACTGGCGGGGACGCCGCCCTCACCAACCGCTCAGT
 CAGCCTGCTGGAGGAGGGGCACCTTCTGGTACG

ACCGTACGCGGCCGCTCGAG - GFP Tag - GTTTAA

Protein Sequence:

>RG210796 representing NM_004273
 Red=Cloning site Green=Tags(s)

MEKGLTLPQDCRDFVHSLKMRKYALFLVFFVIVFVIEKENKIIISRVSDKLKQIPQALADANSTDPALI
 LAENASLLSLSLSDSAFSQLQSRLRNLSQLGVPEPAMEAAGEEEEEQRKEEPPRAVAGPRRHVLLMAT
 TRTGSSFVGEFFNQGNIFYLFEPLWHIERTVSFEPGGANAAGSALVYRDVLKQLFLCDLVVLEHFITPL
 PEDHLTQFMFRRGSSRSLCEDPVCTPFVKKVFEKYHCKNRRCGPLNVTLAAEACRRKEHMALKAVRIRQL
 EFLQPLAEDPRLDLRVIQLVYRDPRAVLASRMVAFAGKYKTWKKWLDDEGQDGLREEEVQRLRGNCSIRL
 SAELGLQQPAWLRGRYMLVRYEDVARGPLQKAREMYRFAGIPLTPQVEDWIQKNTQAAHDGSGIYSTQKN
 SSEQFEKWRFMPFKLAQVVQAACGPAMRLFYKYLARDAALTNRSVSLLEERGTFWVT

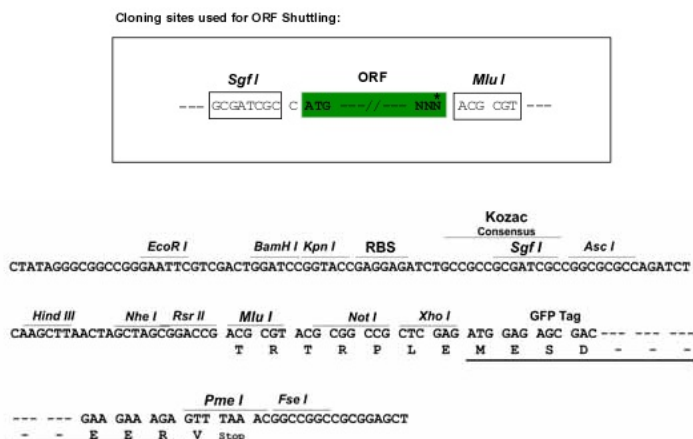
TRTRPLE - GFP Tag - V

Chromatograms:

https://cdn.origene.com/chromatograms/ja1645_h10.zip

Restriction Sites:

Sgfl-MluI

Cloning Scheme:


ACCN: NM_004273

ORF Size: 1437 bp

OTI Disclaimer: The molecular sequence of this clone aligns with the gene accession number as a point of reference only. However, individual transcript sequences of the same gene can differ through naturally occurring variations (e.g. polymorphisms), each with its own valid existence. This clone is substantially in agreement with the reference, but a complete review of all prevailing variants is recommended prior to use. [More info](#)

OTI Annotation: This clone was engineered to express the complete ORF with an expression tag. Expression varies depending on the nature of the gene.

Components: The ORF clone is ion-exchange column purified and shipped in a 2D barcoded Matrix tube containing 10ug of transfection-ready, dried plasmid DNA (reconstitute with 100 ul of water).

Reconstitution Method:

1. Centrifuge at 5,000xg for 5min.
2. Carefully open the tube and add 100ul of sterile water to dissolve the DNA.
3. Close the tube and incubate for 10 minutes at room temperature.
4. Briefly vortex the tube and then do a quick spin (less than 5000xg) to concentrate the liquid at the bottom.
5. Store the suspended plasmid at -20°C. The DNA is stable for at least one year from date of shipping when stored at -20°C.

RefSeq: [NM_004273.2](#), [NP_004264.2](#)

RefSeq Size: 6961 bp

RefSeq ORF: 1440 bp

Locus ID: 9469

UniProt ID: [Q7LGC8](#)

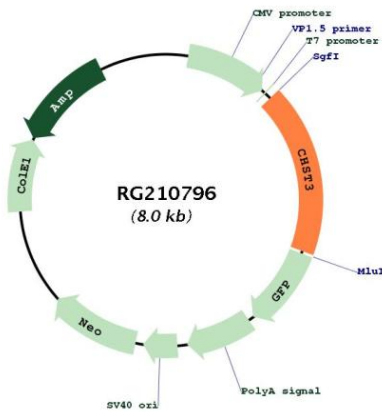
Cytogenetics: 10q22.1

Protein Families: Transmembrane

Protein Pathways: Chondroitin sulfate biosynthesis

Gene Summary: This gene encodes an enzyme which catalyzes the sulfation of chondroitin, a proteoglycan found in the extracellular matrix and most cells which is involved in cell migration and differentiation. Mutations in this gene are associated with spondylepiphyseal dysplasia and humerospinal dysostosis. [provided by RefSeq, Mar 2009]

Product images:



Circular map for RG210796