

Product datasheet for **RG210768**

CD37 (NM_001774) Human Tagged ORF Clone

Product data:

Product Type:	Expression Plasmids
Product Name:	CD37 (NM_001774) Human Tagged ORF Clone
Tag:	TurboGFP
Symbol:	CD37
Synonyms:	GP52-40; TSPAN26
Mammalian Cell Selection:	Neomycin
Vector:	pCMV6-AC-GFP (PS100010)
E. coli Selection:	Ampicillin (100 ug/mL)
ORF Nucleotide Sequence:	>RG210768 representing NM_001774 Red=Cloning site Blue=ORF Green=Tags(s)

TTTTGTAATACGACTCACTATAGGGCGGCCGGAATTCGTCGACTGGATCCGGTACCGAGGAGATCTGCC
GCC**CGCATCGCC**

ATGTCAGCCCAGGAGAGCTGCCTCAGCCTCATCAAGTACTTCTCTTCGTTTTCAACCTCTTCTTCTCG
TCCTCGGCAGCCTGATCTTCTGCTTCGGCATCTGGATCCTCATTGACAAGACCAGCTTCGTGCTTTGT
GGGCTTGGCCTTCGTGCCTCTGCAGATCTGGTCCAAAGTCTGGCCATCTCAGGAATCTTACCATGGGC
ATCGCCCTCCTGGGTTGTGTGGGGCCCTCAAGGAGCTCCGCTGCCTCCTGGCCTGTATTTGGGATGC
TGCTGCTCCTGTTGCCACACAGATCACCTGGGAATCCTCATCTCCACTCAGCGGGCCAGCTGGAGCG
AAGCTTGCGGGACGTCGTAGAGAAAACCATCCAAAAGTACGGCACCAACCCGAGGAGACCGCGCCGAG
GAGAGCTGGGACTATGTGCAATTCCAGCTGCGCTGCTGCGGCTGGCACTACCCGCAGGACTGGTTCCAAG
TCCTCATCCTGAGAGGTAACGGGTCCGAGGGCGCACCGCTGCCCTGCTCCTGCTACAACCTGTGCGCGAC
CAACGACTCCACAATCCTAGATAAGGTGATCTTCCCCAGCTCAGCAGGCTTGGACACCTGGCGCGGTCC
AGACACAGTGCAGACATCTGCGCTGTCCCTGCAGAGAGCCACATCTACCGCGAGGGCTGCGCGCAGGGCC
TCCAGAAGTGGCTGCACAACAACCTTATTTCCATAGTGGGCATTTGCCTGGGCGTCCGGCTACTCGAGCT
CGGGTTTCATGACGCTCTCGATATTCTGTGCAGAAACCTGGACCACGCTACAACCGGCTCGCTCGATAC
CGT

ACGCGTACGCGGCCGCTCGAG - GFP Tag - GTTTAA



[View online »](#)

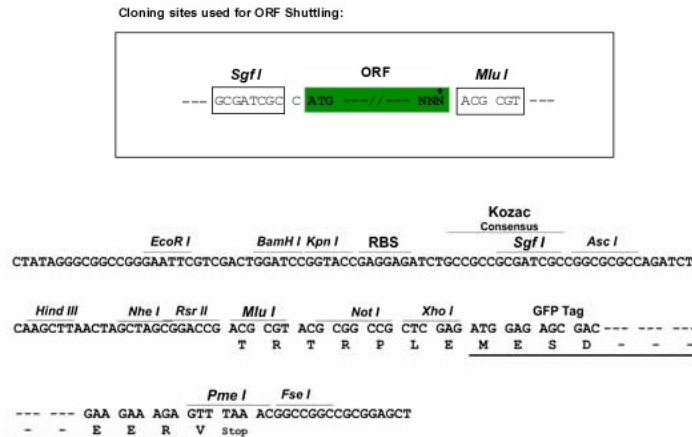
Protein Sequence: >RG210768 representing NM_001774
Red=Cloning site Green=Tags(s)

MSAQECSLSLIKYFLFVFNLFFFVLGSLIFCFGIWILIDKTSFVSVFVGLAFVPLQIWSKVLAIISGIFTMG
 IALLGCVGALKELRCLLGLYFGMLLLLFATQITLGILISTQRAQLERSLRDVVEKTIQKYGTNPEETAEE
 ESWDYVQFQLRCCGWHPQDFVQLILRNGSEAHRVPCSCYNLSATNDSTILDKVILPQLSRLGHLARS
 RHSADICAVPAESHIYREGCAQGLQKWLHNNLISIVGICLVGGLLELGFMTLSIFLCRNLDHVVNRLARY
 R

TRTRPLE - GFP Tag - V

Restriction Sites: SgfI-MluI

Cloning Scheme:



ACCN: NM_001774

ORF Size: 843 bp

OTI Disclaimer: The molecular sequence of this clone aligns with the gene accession number as a point of reference only. However, individual transcript sequences of the same gene can differ through naturally occurring variations (e.g. polymorphisms), each with its own valid existence. This clone is substantially in agreement with the reference, but a complete review of all prevailing variants is recommended prior to use. [More info](#)

OTI Annotation: This clone was engineered to express the complete ORF with an expression tag. Expression varies depending on the nature of the gene.

Components: The ORF clone is ion-exchange column purified and shipped in a 2D barcoded Matrix tube containing 10ug of transfection-ready, dried plasmid DNA (reconstitute with 100 ul of water).

Reconstitution Method:

1. Centrifuge at 5,000xg for 5min.
2. Carefully open the tube and add 100ul of sterile water to dissolve the DNA.
3. Close the tube and incubate for 10 minutes at room temperature.
4. Briefly vortex the tube and then do a quick spin (less than 5000xg) to concentrate the liquid at the bottom.
5. Store the suspended plasmid at -20°C. The DNA is stable for at least one year from date of shipping when stored at -20°C.

RefSeq: [NM_001774.3](#)

RefSeq Size: 1263 bp

RefSeq ORF: 846 bp

Locus ID: 951

UniProt ID: [P11049](#)

Cytogenetics: 19q13.33

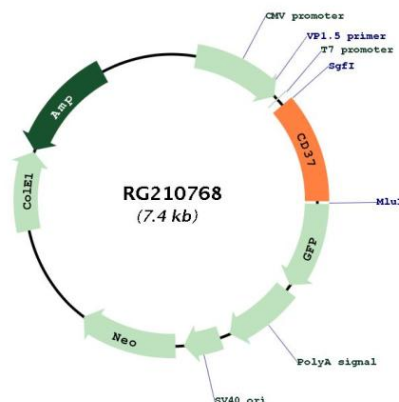
Domains: transmembrane4

Protein Families: Transmembrane

Protein Pathways: Hematopoietic cell lineage

Gene Summary: The protein encoded by this gene is a member of the transmembrane 4 superfamily, also known as the tetraspanin family. Most of these members are cell-surface proteins that are characterized by the presence of four hydrophobic domains. The proteins mediate signal transduction events that play a role in the regulation of cell development, activation, growth and motility. This encoded protein is a cell surface glycoprotein that is known to complex with integrins and other transmembrane 4 superfamily proteins. It may play a role in T-cell-B-cell interactions. Alternate splicing results in multiple transcript variants encoding different isoforms. [provided by RefSeq, Jul 2008]

Product images:



Circular map for RG210768