

Product datasheet for **RG210754**

TACC3 (NM_006342) Human Tagged ORF Clone

Product data:

Product Type:	Expression Plasmids
Product Name:	TACC3 (NM_006342) Human Tagged ORF Clone
Tag:	TurboGFP
Symbol:	TACC3
Synonyms:	ERIC-1; ERIC1; maskin; Tacc4
Mammalian Cell Selection:	Neomycin
Vector:	pCMV6-AC-GFP (PS100010)
E. coli Selection:	Ampicillin (100 ug/mL)



[View online »](#)

ORF Nucleotide Sequence:

>RG210754 representing NM_006342
 Red=Cloning site Blue=ORF Green=Tags(s)

TTTTGTAATACGACTCACTATAGGGCGGCCGGGAATTCGTCGACTGGATCCGGTACCGAGGAGATCTGCC
 GCC**CGGATCGCC**

ATGAGTCTGCAGGTCTTAAACGACAAAAATGTCAGCAATGAAAAAATACAGAAAATTCGACTTCTCTGT
 TTTCCGCCACCAGAAGTTACCGGAAGATCGTCTGTTCTTCTGTGTGTACAGAAAGAAAATGTGCCACCCAA
 GAACCTGGCCAAAAGCTATGAAGGTGACTTTTCAGACACCTCTGCGGGATCCACAGACGCACAGGATTCTA
 AGTCTAGCATGGCCAGCAAAGTGGAGGCTCCTTTCACTCAGGATGACACCCCTGGACTGGAAAACCTCAC
 ACCCGGTCTGGACACAGAAAGAGAACCAACAGCTCATCAAGGAAGTGGATGCCAAAACCTACTCATGGAAT
 TCTACAGAAACCAGTGGAGGCTGACACCCGACCTCTGGGGATGCAAGCCAGCCTTTGGGAGTGGCAGC
 TCCAGCGAGTCTGGCCAGGTGCCCTGGCTGACCTGGACTGCTCAAGCTTTCCAGAGCCAGGAAGTT
 CTGAGAACCAAAATGGTGTCTCCAGGAAAAGTGTCTGGCAGCCCTGAGCAAGCCGTGGAGGAAAACCTTAG
 TTCTATTCTTAGACAGAAGAGTACACCCGCTCTGAGACCCTAGAAGACCCTTGAGGACAGAGTCC
 CAGCACAAAGCGGAGACTCCGCACGGAGCCGAGGAAGAATGCAAAGCGGAGACTCCGCACGGAGCCGAGG
 AGGAATGCCGGCACGGTGGGGTCTGTGCTCCCGCAGCAGTGGCCACTTCGCCCTCTGGTGAATCCCTAA
 GGAAGCCTGCGGAGGAGCACCCCTGCAGGGTCTGCCTGGCGAAGCCCTGGGCTGCCCTGCGGGTGTGGGC
 ACCCCCGTGCAGCAGATGGCACTCAGACCCCTTACCTGTGCACACACCTCTGCTCCTGAGAGCACAGCCC
 CAACCAACCACCTGGTGGCTGGCAGGGCCATGACCCTGAGTCTCAGGAAGAAGTGGCTGCAGGCCAAAAT
 GGCCAGTCTCGAGGAGCGGACCTGTAAAAGTGAATTTGATGTATCTGATGGCGCCACCAGCAAAAAGG
 GCACCCCAACCAAGGAGACTGGGAGAGAGTCCGGCCTCAAGCCTCCCTTGAGGAAAGCAGCAGTGGAGC
 AGCTTCTCGGGGCTCTTACCACCTCGACTGGGACAAAATGGATGACCCAAACTTCATCCCGTTCCGAGGT
 GACACCAAGTCTGGTTGCACTGAGGCCAGCCCCAGAAAAGCCCTGAGACCAGGCTGGGCCAGCCAGCGG
 CTGAACAGTTGCATGCTGGGCTGCCACGGAGGAGCCAGGTCCCTGTCTGAGCCAGCAGTGCATTACAGC
 CTCAGCGGAGGACACGCCTGTGGTGCAGTTGGCAGCCGAGACCCCAACAGCAGAGAGCAAGGAGAGAGCC
 TTGAACCTGCCAGCACCTCGCTTCCACAAGCTGTCCAGGCAGTGGCCAGTGGCCACCCATCAGCAGG
 GGCAGCCTGCCTGGAGCTGAAAGAGGAGAGCTTACAGAGACCCCGCTGAGGTTCTAGGCACGGGCGCGGA
 GGTGGATTACCTGGAGCAGTTTGAAGTCTCCTCGTTTAAAGGAGTCGGCCTTGAGGAAGCAGTCTTATAC
 CTCAGTTGACCCCTCCTGAGGACAGTCTGGTAGACCAGTCCCGTGGCCACCGAGACCAGCAGCA
 TGACCGTGCAAATGAGACTCCCTCAGGAGCTCCGCGGAAGCCAAGCTTGTGGAGTTTCGATTTCTTGGG
 AGCACTGGACATTCTGTGCCAGGCCACCCCAAGGTGTTCCCGCGCTGGGGGCCACCCCTGTCCACC
 GGACCTATAGTGGACCTGCTCCAGTACAGCCAGAAGGACCTGGATGCAGTGGTAAAGGCGACACAGGAGG
 AGAACCGGAGCTGAGGAGCAGGTGTGAGGAGCTCCACGGGAAGAACCTGGAAGTGGGGAAGATCATGGA
 CAGGTTTGAAGAGGTTGTGTACCAGGCCATGGAGGAAGTTCAGAAGCAGAAGGAAGTTCCTCAAGGCTGAA
 ATCCAGAAAGTTCTAAAAGAAAAAGACCAACTTACCACAGATCTGAACTCCATGGAGAAGTCTTCTCCG
 ACCTCTTCAAGCGTTTTGAGAAACAGAAAGAGGTGATCGAGGGCTACCGCAAGAACGAAGAGTCACTGAA
 GAAGTCCGTGGAGATTACCTGGCAAGGATCACCCAGGAGGGCCAGAGGTACCAAGCCCTGAAGGCCAC
 CGGAGGAGAAGCTGCAGCTGGCAACAGGAGATCGCCAGGTCGGAGCAAGGCCAGCGGGAAGCGT
 TGGCCCTCCAGGCCAGCTGAGGAAGGAGCAGATGCGCATCCAGTCGCTGGAGAAGACAGTGGAGCAGAA
 GACTAAAGAGAACGAGGAGCTGACCAGGATCTGCGACGACCTCATCTCCAAGATGGAGAAGATC

ACCGTACGCGGCCGCTCGAG - GFP Tag - GTTTAA

Protein Sequence: >RG210754 representing NM_006342
Red=Cloning site Green=Tags(s)

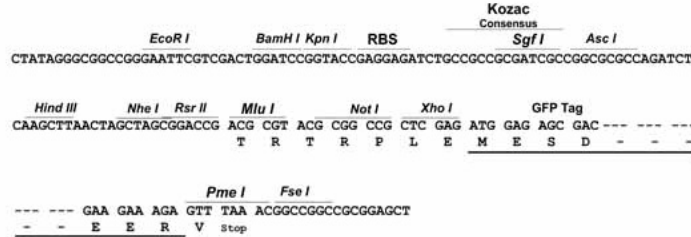
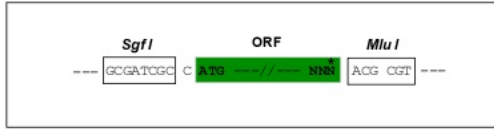
MSLQVLNDKNVSNEKNTENCDFLFSPPEVTGRSSVLRVSQKENVPPKNLAKAMKVTFTPLRDPQTHRIL
SPSMASKLEAPFTQDDTLGLENSHPVWTQKENQQLIKEVDAKTTHGILQKPVEADTDLGDASPAFGSGS
SSESGPGALADLDCSSSSQSPGSSNQMVSPGKVSQSPEQAVEENLSSYSLDRRVTASETLEDPCRTES
QHKAETPHGAEEEECKAETPHGAEEECRHGGVCAPAAVATSPPGAIPKEACGGAPLQGLPGEALGCPAGVG
TPVPADGTQTLTCAHTSAPESTAPT NHLVAGRAMT LSPQEEVAAGQMASSRSRSGPVKLEFDVSDGATSKR
APPPRRLGERSGLKPPLRKA AAVRQKAPQEVEEDDGRSGAGEDPPMPASRGSYHLDWDMDDPNFIPFGG
DTKSGCSEAQPPEPETRLGQPAAEQLHAGPATEEPGCLSQQLHSASAEDTPVVQLAAETPTAESKERA
LNSASTSLPTSCPGSEPVPTHQGGQPALELKEESFRDPAEVLGTGAEVDYLEQFGTSSFKESALRKQSLY
LKFDPLL RDSPGRPVVATETSSMHGANETPSGRPREAKLVEFDL GALDIPVPGPPP GVPAPGGPPLST
GP IVDLLQYSQKDLDAVVKATQEENRELRSRCEELHGKNLELGKIMDRFEEVVYQAMEEVQKQKELSKAE
IQKVLKEKQDLTTDLNSMEKSFSDLFKRFKQKEVIEGYRKNEESLKKCVEDYLARITQEGQRYQALKAH
AEEKLQLANEEIAQVRSKAQAEALALQASLRKEQMRIQSLEKTVEQTKENEELTRICDDLISKMEKI

TRTRPLE - GFP Tag - V

Restriction Sites: SgfI-MluI

Cloning Scheme:

Cloning sites used for ORF Shuttling:



ACCN: NM_006342

ORF Size: 2514 bp

OTI Disclaimer: The molecular sequence of this clone aligns with the gene accession number as a point of reference only. However, individual transcript sequences of the same gene can differ through naturally occurring variations (e.g. polymorphisms), each with its own valid existence. This clone is substantially in agreement with the reference, but a complete review of all prevailing variants is recommended prior to use. [More info](#)

OTI Annotation: This clone was engineered to express the complete ORF with an expression tag. Expression varies depending on the nature of the gene.

Components: The ORF clone is ion-exchange column purified and shipped in a 2D barcoded Matrix tube containing 10ug of transfection-ready, dried plasmid DNA (reconstitute with 100 ul of water).

Reconstitution Method:

1. Centrifuge at 5,000xg for 5min.
2. Carefully open the tube and add 100ul of sterile water to dissolve the DNA.
3. Close the tube and incubate for 10 minutes at room temperature.
4. Briefly vortex the tube and then do a quick spin (less than 5000xg) to concentrate the liquid at the bottom.
5. Store the suspended plasmid at -20°C. The DNA is stable for at least one year from date of shipping when stored at -20°C.

RefSeq: [NM_006342.3](#)

RefSeq Size: 2788 bp

RefSeq ORF: 2517 bp

Locus ID: 10460

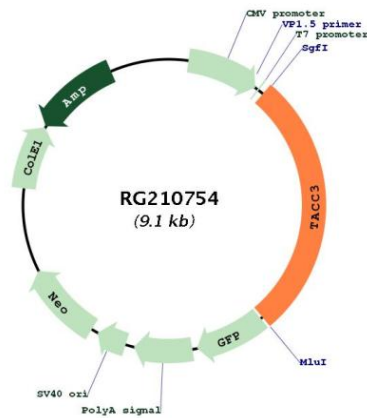
UniProt ID: [Q9Y6A5](#)

Cytogenetics: 4p16.3

Domains: TACC

Gene Summary: This gene encodes a member of the transforming acidic coiled-coil protein family. The encoded protein is a motor spindle protein that may play a role in stabilization of the mitotic spindle. This protein may also play a role in growth and differentiation of certain cancer cells. [provided by RefSeq, Nov 2011]

Product images:



Circular map for RG210754