

Product datasheet for **RG210725**

MAP7D1 (NM_018067) Human Tagged ORF Clone

Product data:

Product Type:	Expression Plasmids
Product Name:	MAP7D1 (NM_018067) Human Tagged ORF Clone
Tag:	TurboGFP
Symbol:	MAP7D1
Synonyms:	PARCC1; RPRC1
Mammalian Cell Selection:	Neomycin
Vector:	pCMV6-AC-GFP (PS100010)
E. coli Selection:	Ampicillin (100 ug/mL)



[View online »](#)

ORF Nucleotide Sequence:

>RG210725 representing NM_018067
 Red=Cloning site Blue=ORF Green=Tags(s)

TTTTGTAATACGACTCACTATAGGGCGGCCGGGAATTCGTCGACTGGATCCGGTACCGAGGAGATCTGCC
 GCC**CGGATCGCC**

ATGGAGAGCGGCCCGCTGCGGAGCTGGGGCGGGCGCACCCCCAGCTGTGGTCGCCAGGACCCCCCAG
 AGCCAAGACCTTCTCCAGAAGGTGACCCTTCCCCCACCACCACCAATGTCAGCCCTGGTCCCCGACAC
 TCCCCCGACACCCCTCCTGCCATGAAGAATGCCACTAGCTCTAAGCAGCTCCCCTGGAACAGAGAGC
 CCCTCAGGGCAGGTGGGCTTAGGCCAGCCCCCGCAGGAAGAGTCCCCTTCTCTGAAGCAAAGAGCA
 GAGGACCCACCCACCAGCCATGGGCCACGGGATGCCAGACCTCCTCGAAGGAGCAGCCAGCCATCTCC
 AACAGCAGTGCCAGCCTCCGACAGCCCTCCACCAAGCAAGAGGTGAAGAAGGCAGGAGAGACACAAG
 CTGGCAAAGGAGCGGCGAGAAGAGCGGGCAAGTACCTGGCGGCAAGAAGGCAGTGTGGCTGGAGAAGG
 AGGAGAAGGCCAAGGCGCTGCGGGAGAAGCAGCTCCAGGAGCGCCGGCGCCGGCTGGAGGAGCAACGTCT
 TAAAGCCGAGCAACGCCGTGCAGCCCTGGAGGAACGGCAGCGGCAAGCTCGAGAAAAACAGGAGCGC
 TATGAAGCAGCCATCCAACGGTCACTGAAGAAGACGTGGGCCAAATCCGGCAGCAGCGCTGGTCCCTGGG
 CAGGGGCCCTGCACCACAGCTCTCCAGGACATAAGACCAGTGGGAGCAGGTGCTCCGTGTGCGCAGTTAA
 CCTGCCAAAACAGTGGACTCTATAATCAACAAGCGGCTCTCAAAGTCTCTGCCACGCTCTGAACTCC
 CCCAGTAGAAATCGCAGCCTGCAGCTGAGCGCATGGGAGAGCAGCATCGTGGATCGTCTGATGACGCCCA
 CTCTCTCCTTCTTGGCTCGGAGTGCAGCGCGGTCACTGCCCCGCAACGGCCGGGACCAGGGTAGGGG
 CTGCGACCCTGGGAGAGGCCACGTGGGGCGGGCAGGGCCAGCCTGGCGCGGGGCCCAACCCGAC
 CGCACTCATCCCTCTGCAGCCGTGCCGGTGTGCCCGGCTCGGCTCCGCCAGCCCCCTGACGCCGTGCA
 GCGTCACCCGAAGCGTGCACCCGTGCCCCCCGCCGGTGAGCGGGGAGCGCCGCAAGCCCAACGCCCG
 GGGCAGCCCCGCTCCGGTGCAGCCGCCGGCCGAGGCTCGCCGGTGCAGAAAAAGGAGAAGAAGGACAAG
 GAGCGGGAAAACGAGAAGGAGAAGAGTGCCTAGCCCGGAGCGCAGCCTCAAGAAGCGCCAGTCTGCTGC
 CCGCTCCCCACGTGCCGCTCTCCGCCAGCACCCTCTGAGCTCAGCCCCAAATCCAAGGCCAGGCC
 ATCCTCTCCCTCCACATCCTGGCACAGGCTGCCTCCCCCTGCCCAGCCAGGGCCAGGCCACACTCTG
 CCTCCAAGCCACCGTCCCCCGAGGCACACTGCATCCCCCAAGGGGCGGGTTCGGAGGAAGGAGGAGG
 CAAAGGAGAGCCCCAGCGCCGAGGGCCCGAGGACAAGAGCCAGAGCAAGCGCAGGGCCAGTAACGAGAA
 GGAGTCAGCAGCCCCAGCCTCACCGCACCTTCGCGGGCGCCCTCGCCACCCAGCCCCGCCAGAA
 GAGCAGCCCCCGGGAGACCCCTACAGACGCTGCTGTCTTGACCTCACCCAGCCCTGCTCCCCCGG
 TGACCCCTAGCAAACCAATGGCCGGCACACAGACCGAGAAGAAGCCACTCGGCTCTTGCTGAGAAGCG
 GCGCCAGGCCCGGAGCAGCGGGAGCGGAGGAGCAGGAGCGGAGGCTGCAGGCAGAAAGGGACAAGCGA
 ATGCGAGAGGAGCAGCTGGCACGGGAGGCCGAGGCCCGGGCGGAGCGGGAGGCGGAGGCCCGGAGCGGG
 AGGAGCAGGAGGCAGAGAGAAGGCGCAGGCCGAGCAGGAGGAGCAGGAGCGGCTGCAGAAGCAGAAAGA
 GGAGGCCGAAGCTCGGTGCGGGAAAGAGGCGGAGCGGCAGCGTCTGGAGCGGAAAAGCACTTCCAGCAG
 CAGGAGCAAGAGCGGCAAGAGCGCAGAAAGCGTCTGGAGGAGATCATGAAGAGGACTCGGAAGTCAGAAG
 TTTCTGAAACCAAGCAGAAGCAGGACAGCAAGGAGGCCAACGCCAACGGTTCAGCCAGAGCCTGTGAA
 AGCTGTGGAGGCTCGGTCCCCAGGGCTGCAGAAGGAGGCTGTGCAGAAAGAGGAGCCATCCCACAGGAG
 CCTCAGTGGAGTCTCCCAAGCAAGGAGTTGCCAGCGTCCCTGGTGAATGGCCTGCAGCCTCTCCAGCAC
 ACCAGGAGAATGGCTTCTCCACCAACGGACCCTCTGGGGACAAGAGTCTGAGCCGAACACCAGAGACT
 CCTGCCCTTTCAGAGGCAGAAGCCTTCTCAAGAAAGCTGTGGTGCAGTCCCCGCGAGTACAGAAAGTC
 CTT

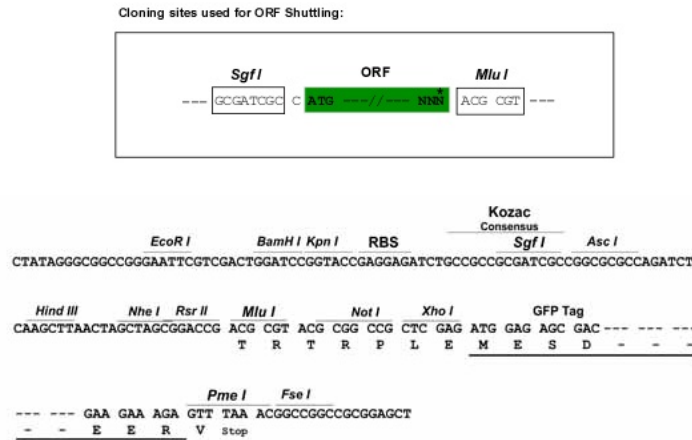
ACGCGTACGCGGGCCGCTCGAG – GFP Tag – GTTTAA

Protein Sequence: >RG210725 representing NM_018067
 Red=Cloning site Green=Tags(s)

```
MESGPRAELGAGAPPAVVARTPPEPRPSPEGDPSPPPPPMSALVPDTPDTPPAMKNATSSKQLPLEPES
PSGQVGPRPAPPQEEPSSEAKSRGPTPPAMGPRDARPPRRSSQPSPTAVPASDSPPTKQEVKKAGERHK
LAKERREERAKYLAACKAVWLEKEEKAKALREKQLQERRRRLEEQRLKAEQRRRAALEERQRKLEKNKER
YEAAIQRSVKKTWAEIRQQRWSWAGALHHSSPGHKTSGRCSVSAVNLPKHVDSIINKRLSKSSATLWNS
PSRNRSLQLSAWESSIVDRLMTPTLSFLARSRAVTLPRNGRDQGRGCDPGRGPTWGRAGASLARGPQPD
RTHPSAAVPVPCPRASASPLTPCSVTRSVHRCAPAGERGERRKPNAGGSPAPVRRRPEASPVQKKEKDK
ERENEKESALARERSLKKRQSLPASPRARLSASTASELSPKSKARPSSPSTSWHRPASPCSPGPGHTL
PPKPPSPRGTTASPKGRVRRKEEAKESPSAAGPEDKSQSKRRASNEKESAAPASPAPSPAPSPTAPPQK
EQPPAETPTDAAVLTSPAPAPPVTPSKPMAGTTDREEATRLLAEKRRQAREQREERQERRLQAERDKR
MREEQLAREAEARAEREAEARRREEQEAKEAQAEQEEQERLQKQKEAEARSREEAERQLEREKHFQQ
QEQRERKRLEEIIMKRTRKSEVSETKQKQDSKEANANGSSPEPVKAVEARSPGLQKEAVQKEEPIPQE
PQWLSLPSKELPASLVNGLQPLPAHQENGFSTNGPSGDKSLSRTPETLLPFAEAEAFLLKAVVQSPQVTEV
L
```

TRTRPLE - GFP Tag - V

Restriction Sites: Sgfl-MluI

Cloning Scheme:


ACCN: NM_018067

ORF Size: 2523 bp

OTI Disclaimer: The molecular sequence of this clone aligns with the gene accession number as a point of reference only. However, individual transcript sequences of the same gene can differ through naturally occurring variations (e.g. polymorphisms), each with its own valid existence. This clone is substantially in agreement with the reference, but a complete review of all prevailing variants is recommended prior to use. [More info](#)

OTI Annotation: This clone was engineered to express the complete ORF with an expression tag. Expression varies depending on the nature of the gene.

Components: The ORF clone is ion-exchange column purified and shipped in a 2D barcoded Matrix tube containing 10ug of transfection-ready, dried plasmid DNA (reconstitute with 100 ul of water).

Reconstitution Method:

1. Centrifuge at 5,000xg for 5min.
2. Carefully open the tube and add 100ul of sterile water to dissolve the DNA.
3. Close the tube and incubate for 10 minutes at room temperature.
4. Briefly vortex the tube and then do a quick spin (less than 5000xg) to concentrate the liquid at the bottom.
5. Store the suspended plasmid at -20°C. The DNA is stable for at least one year from date of shipping when stored at -20°C.

RefSeq: [NM_018067.3](#), [NP_060537.3](#)

RefSeq Size: 3357 bp

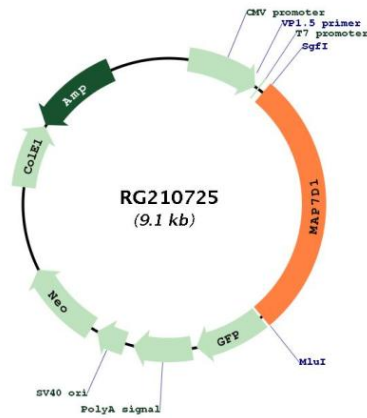
RefSeq ORF: 2526 bp

Locus ID: 55700

UniProt ID: [Q3KQU3](#)

Cytogenetics: 1p34.3

Product images:



Circular map for RG210725